

PRODUCT DATA SHEET



PRODUCT - DATA

S890HP
Palican hook with link

S890HP

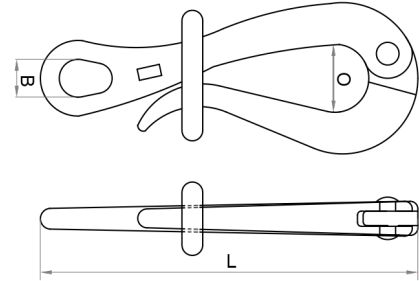
Technical Data

Casting material : AISI316 - DIN 1.4408
Production : S890HP - Hook - Cast
Surface treatment : "M.P." (Mirror polished)

Note : Standard safety factor for working load is 1/4 of breaking load



 **S890HP**
Palican hook with link



| S890HP | | SIZE | B (mm) | B (inch) | L (mm) | L (inch) | O (mm) | O (inch) | Unit weight (kgs) | Unit weight (lb) | B.L. (kgs) | B.L. (lb) |
|-----------|--|------|--------|----------|--------|----------|--------|----------|-------------------|------------------|------------|-----------|
| SS316 | | | | | | | | | | | | |
| 6890-0004 | | 4" | 10 | 0.39 | 100 | 3.94 | 18 | 0.71 | 0.10 | 0.22 | 760 | 1,672 |
| 6890-0006 | | 6" | 13 | 0.51 | 150 | 5.91 | 22 | 0.87 | 0.24 | 0.53 | 1,200 | 2,640 |

CODE: S890HP

KINZI DATA SHEET

100%
RECYCLABLE

WWW.KINZI.COM