

PRODUCT DATA SHEET



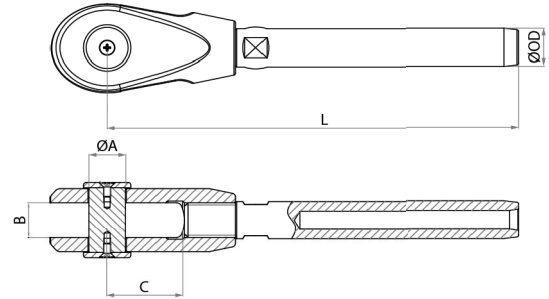
PRODUCT - DATA

S7803_B3 Swage fork B3

S7803_B3

Technical Data

- Swage Fork B3 : Casting material
: AISI316, EN 1.4408
- Swage : Forging material
: AISI316, EN 1.4401
- Surface treatment : "E.P." (Electro polished)
- MBL : Minimum Breaking Load
before cable assembly.
- Limit Tension : Recommended maximum
load for a tension member.
All other applications should
consider ¼ of MBL*.
- TAP : 23.1



S7803_B3 SS316	SIZE ØCable (mm)	ØA (mm)	ØA (inch)	B (mm)	B (inch)	C (mm)	C (inch)	L (mm)	L (inch)	ØOD (mm)	ØOD (inch)	Unit weight (kgs)	Unit weight (lb)	Limit Tension (kN)	MBL (kN)
6780-3349	10	20	0.79	20	0.79	42	1.65	225	8.86	21.4	0.84	1.03	2.26	64	126
6780-3336	12	22	0.87	22	0.87	48	1.89	259	10.20	21.4	0.84	1.28	2.82	79	155
6780-3337	14	24	0.94	25	0.98	55	2.17	296	11.65	25.0	0.98	1.76	3.87	92	181
6780-3338	16	26	1.02	27	1.06	60	2.36	328	12.91	28.1	1.11	2.36	5.19	120	236
6780-3339	19	30	1.18	33	1.30	70	2.76	392	15.43	34.5	1.36	4.43	9.74	181	357
6780-3340	20	30	1.18	33	1.30	70	2.76	404	15.91	34.5	1.36	4.43	9.74	181	357
6780-3341	22	34	1.34	36	1.42	75	2.95	447	17.60	40.4	1.59	5.99	13.18	213	420
6780-3342	24	36	1.42	39	1.54	80	3.15	488	19.21	46.0	1.81	8.15	17.93	255	502
6780-3343	28	42	1.65	45	1.77	90	3.54	561	22.09	50.0	1.97	13.04	28.69	342	672
6780-3344	30	50	1.97	52	2.05	100	3.94	610	24.02	58.0	2.28	23.60	51.92	460	905
6780-3345	34	50	1.97	56	2.20	110	4.33	688	27.09	65.0	2.56	31.83	70.03	531	1,044
6780-3346	36	55	2.17	60	2.36	115	4.53	722	28.43	65.0	2.56	37.52	82.54	618	1,216

CODE: S7803_B3

KINZI DATA SHEET

100%
RECYCLABLE

WWW.KINZI.COM