

# PRODUCT DATA SHEET



## PRODUCT - DATA

**S580**  
Eye bolt (AISI type)

### S580

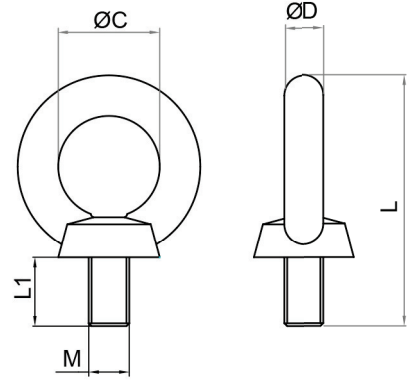
#### Technical Data

Casting material : AISI316 - DIN 1.4408  
 Forging material : AISI316 - DIN 1.4401  
 Production : S580  
 Thread - Forged  
 Bolt - Cast  
 Surface treatment : "E.P." (Electro polished)

Note : Standard safety factor for working load  
 is 1/4 of breaking load



**Metric Imperial** S580  
Eye bolt (AISI type)



S580 SS316	SIZE	ØC (mm)	ØC (inch)	ØD (mm)	ØD (inch)	L1 (mm)	L1 (inch)	L (mm)	L (inch)	M (mm/inch)	Unit weight (kgs)	Unit weight (lb)	B.L. (kgs)	B.L. (lb)
6580-0006	6	15	0.59	6	0.24	10	0.39	37	1.46	M6	0.02	0.04	1,300	2,860
6580-0008	8	20	0.79	8	0.31	13	0.51	49	1.93	M8	0.05	0.11	2,000	4,400
6580-0010	10	25	0.98	10	0.39	17	0.67	62	2.44	M10	0.09	0.20	2,600	5,720
6580-0012	12	30	1.18	12	0.47	21	0.83	74	2.91	M12	0.16	0.35	4,900	10,780
6580-0016	16	35	1.38	14	0.55	27	1.06	90	3.54	M16	0.27	0.59	7,000	15,400
6580-0020	20	40	1.57	16	0.63	30	1.18	102	4.02	M20	0.40	0.88	10,000	22,000
6580-0024	24	50	1.97	20	0.79	36	1.42	126	4.96	M24	0.77	1.69	15,000	33,000
6580-0030	30	60	2.36	24	0.94	45	1.77	153	6.02	M30	1.39	3.06	20,000	44,000
6580-0104	1/4"	15	0.59	6	0.24	10	0.39	37	1.46	1/4"	0.02	0.04	1,300	2,860
6580-0516	5/16"	20	0.79	8	0.31	13	0.51	49	1.93	5/16"	0.05	0.11	2,000	4,400
6580-0308	3/8"	25	0.98	10	0.39	17	0.67	62	2.44	3/8"	0.09	0.20	2,600	5,720
6580-0102	1/2"	30	1.18	12	0.47	21	0.83	74	2.91	1/2"	0.16	0.35	4,900	10,780
6580-0508	5/8"	35	1.38	14	0.55	27	1.06	90	3.54	5/8"	0.26	0.57	7,000	15,400
6580-0001	1"	40	1.57	20	0.79	36	1.42	126	4.96	1"	0.77	1.69	15,000	33,000

CODE: S580

KINZI DATA SHEET

**100%**  
**RECYCLABLE**

[WWW.KINZI.COM](http://WWW.KINZI.COM)