

PRODUCT DATA SHEET



PRODUCT - DATA

S370CI

Anchor shackle (oval sink pin)

S370CI

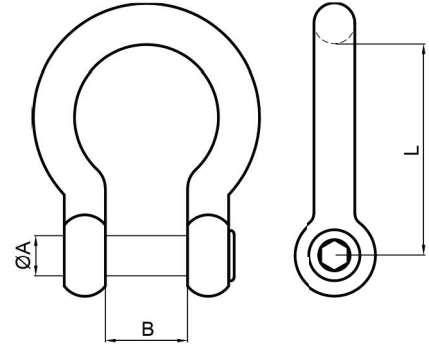
Technical Data

Casting material : AISI316 - DIN 1.4408
 Forging material : AISI316 - DIN 1.4401
 Production : S370CI
 Shackle - Cast
 Pin - Forged
 Surface treatment : "E.P." (Electro polished)

Note : Standard safety factor for working load is 1/4 of breaking load



M Metric **S370CI**
Anchor shackle
(oval sink pin)



S370CI SS316	SIZE	ØA (mm)	ØA (inch)	B (mm)	B (inch)	L (mm)	L (inch)	Unit weight (kgs)	Unit weight (lb)	B.L. (kgs)	B.L. (lb)
6370-5104	4	4	0.16	8	0.31	20.0	0.79	0.01	0.02	550	1,210
6370-5105	5	5	0.20	10	0.39	25.5	1.00	0.02	0.04	1,000	2,200
6370-5106	6	6	0.24	12	0.47	30.0	1.18	0.03	0.07	1,700	3,740
6370-5108	8	8	0.31	16	0.63	41.0	1.61	0.06	0.13	2,800	6,160
6370-5110	10	10	0.39	20	0.79	51.0	2.01	0.12	0.26	4,500	9,900
6370-5112	12	12	0.47	24	0.94	61.0	2.40	0.21	0.46	6,000	13,200
6370-5114	14	14	0.55	28	1.10	70.0	2.76	0.35	0.77	7,000	15,400

CODE: S370CI

KINZI DATA SHEET

100%
RECYCLABLE

WWW.KINZI.COM