

PRODUCT DATA SHEET



PRODUCT - DATA

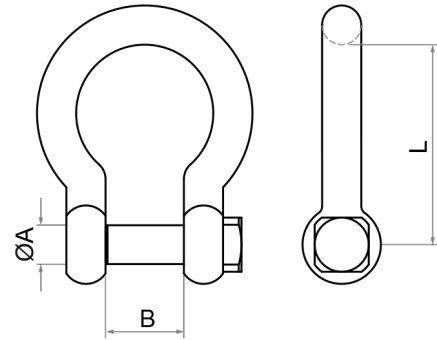
S370B, SF370B

Anchor shackle (square head pin)

S370B, SF370B

Technical Data

Casting material : AISI316 - DIN 1.4408
 Forging material : AISI316 - DIN 1.4401
 Production : S370B
 Shackle - Cast
 Pin - See chart
 SF370B
 Shackle - Forged
 Pin - Forged
 Surface treatment : "E.P." (Electro polished)



Note : Standard safety factor for working load is 1/4 of breaking load

M Metric **S370B, SF370B**
 Anchor shackle
 (square head pin)

S370B SS316	SIZE	ØA (mm)	ØA (inch)	B (mm)	B (inch)	L (mm)	L (inch)	PIN	Unit weight (kgs)	Unit weight (lb)	B.L. (kgs)	B.L. (lb)
6370-1004	4	4	0.16	8	0.31	20.0	0.79	Cast	0.01	0.02	550	1,210
6370-1005	5	5	0.20	10	0.39	25.5	1.00	Cast	0.02	0.04	1,000	2,200
6370-1006	6	6	0.24	12	0.47	30.0	1.18	Forged	0.03	0.06	1,700	3,740
6370-1008	8	8	0.31	16	0.63	41.0	1.61	Forged	0.07	0.15	2,800	6,160
6370-1010	10	10	0.39	20	0.79	51.0	2.01	Forged	0.13	0.29	4,500	9,900
6370-1012	12	12	0.47	24	0.94	61.0	2.40	Forged	0.23	0.51	6,000	13,200
6370-1013	13	13	0.51	26	1.02	66.5	2.62	Forged	0.28	0.62	6,500	14,300
6370-1016	16	16	0.63	32	1.26	82.0	3.23	Forged	0.52	1.14	10,000	22,000
6370-1019	19	19	0.75	38	1.50	97.0	3.82	Forged	0.86	1.89	15,000	33,000
6370-1022	22	22	0.87	44	1.73	110.0	4.33	Cast	1.31	2.88	19,000	41,800
6370-1025	25	25	0.98	50	1.97	125.0	4.92	Cast	1.96	4.31	23,000	50,600

SF370B SS316	SIZE	ØA (mm)	ØA (inch)	B (mm)	B (inch)	L (mm)	L (inch)	Unit weight (kgs)	Unit weight (lb)	B.L. (kgs)	B.L. (lb)
F 2370-1008	8	8	0.31	16	0.63	34.00	1.34	0.06	0.14	3,500	7,700
F 2370-1010	10	10	0.39	20	0.79	42.50	1.67	0.12	0.27	5,500	12,100
F 2370-1012	12	12	0.47	24	0.94	51.00	2.01	0.22	0.48	7,500	16,500
F 2370-1013	13	13	0.51	28	1.10	55.75	2.19	0.29	0.63	9,000	19,800
F 2371-1016	16	16	0.63	32	1.26	68.00	2.68	0.50	1.11	14,000	30,800

CODE: S370B, SF370B

KINZI DATA SHEET

100%
RECYCLABLE

WWW.KINZI.COM