

PRODUCT DATA SHEET



PRODUCT - DATA

S361R Light D-shackle

S361R

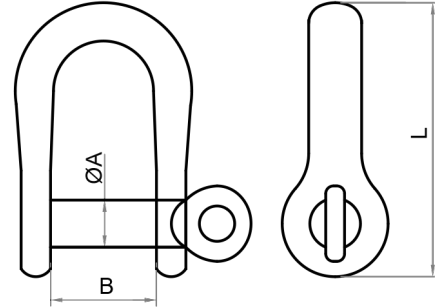
Technical Data

Casting material : AISI316 - DIN 1.4408
 Sheet : AISI316 - DIN 1.4401
 Production : S361R
 Shackle - Cast
 Pin - Forged
 Surface treatment : "E.P." (Electro polished)

Note : Standard safety factor for working load
 is 1/4 of breaking load



M Metric **S361R**
Light D-shackle



S361R SS316	SIZE	ØA (mm)	ØA (inch)	B (mm)	B (inch)	L (mm)	L (inch)	Unit weight (kgs)	Unit weight (lb)	B.L. (kgs)	B.L. (lb)
6361-2005	5	5	0.20	12	0.47	31.2	1.23	0.01	0.03	950	2,090
6361-2006	6	6	0.24	13	0.51	37.0	1.46	0.02	0.04	1,500	3,300
6361-2008	8	8	0.31	18	0.71	46.5	1.83	0.05	0.11	2,600	5,720

CODE: S361R

KINZI DATA SHEET

100%
RECYCLABLE

WWW.KINZI.COM