

PRODUCT DATA SHEET



PRODUCT - DATA

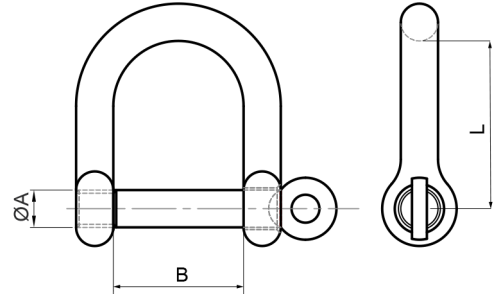
S360WO Wide D-shackle

S360WO

Technical Data

Casting material : AISI316 - DIN 1.4408
 Forging material : AISI316 - DIN 1.4401
 Production : S360WO
 Shackle - Cast
 Pin - Forged
 Surface treatment : "E.P." (Electro polished)

Note : Standard safety factor for working load
 is 1/4 of breaking load



M Metric S360WO
Wide D-shackle

| S360WO SS316 | SIZE | ØA (mm) | ØA (inch) | B (mm) | B (inch) | L (mm) | L (inch) | Unit weight (kgs) | Unit weight (lb) | B.L. (kgs) | B.L. (lb) |
|-----------------|------|------------|--------------|-----------|-------------|-----------|-------------|-------------------------|------------------------|---------------|--------------|
| 6360-9005 | 5 | 5 | 0.20 | 25 | 0.98 | 22.5 | 0.89 | 0.02 | 0.04 | 750 | 1,650 |
| 6360-9006 | 6 | 6 | 0.24 | 24 | 0.94 | 36.0 | 1.42 | 0.03 | 0.07 | 1,350 | 2,970 |
| 6360-9008 | 8 | 8 | 0.31 | 28 | 1.10 | 35.0 | 1.38 | 0.07 | 0.15 | 2,500 | 5,500 |
| 6360-9010 | 10 | 10 | 0.39 | 40 | 1.57 | 60.0 | 2.36 | 0.16 | 0.35 | 3,350 | 7,370 |
| 6360-9012 | 12 | 12 | 0.47 | 48 | 1.89 | 72.0 | 2.83 | 0.26 | 0.57 | 4,000 | 8,800 |

CODE: S360WO

KINZI DATA SHEET

100%
RECYCLABLE

WWW.KINZI.COM