

# PRODUCT DATA SHEET



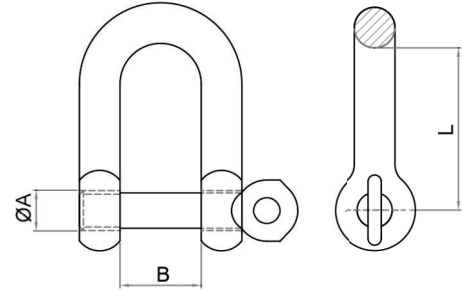
## PRODUCT - DATA

**S360LK, SF360LKF**  
D-shackle (locking pin)

### S360LK, SF360LKF

#### Technical Data

Casting material : AISI316 - DIN 1.4408  
 Forging material : AISI316 - DIN 1.4401  
 Production : S360LK  
     Shackle - Cast  
     Pin - Forged  
     SF360LKF  
     Shackle - Forged  
     Pin - Forged  
 Surface treatment : "E.P." (Electro polished)



Note : Standard safety factor for working load is 1/4 of breaking load

**M** Metric **S360LK, SF360LKF**  
D- shackle (locking pin)

S360LK		SIZE	ØA (mm)	ØA (inch)	B (mm)	B (inch)	L (mm)	L (inch)	Unit weight (kgs)	Unit weight (lb)	B.L. (kgs)	B.L. (lb)
SS316												
6360-5004	4		4.40	0.17	8	0.31	16	0.63	0.01	0.02	800	1,760
6360-5005	5		4.40	0.17	10	0.39	20	0.79	0.01	0.02	1,000	2,200
6360-5006	6		5.25	0.21	12	0.47	24	0.94	0.02	0.04	1,400	3,080
6360-5008	8		7.10	0.28	16	0.63	32	1.26	0.06	0.13	2,800	6,160
6360-5010	10		8.90	0.35	20	0.79	40	1.57	0.11	0.24	4,000	8,800
6360-5012	12		10.70	0.42	24	0.94	48	1.89	0.18	0.40	6,200	13,640

SF360LKF		SIZE	ØA (mm)	ØA (inch)	B (mm)	B (inch)	L (mm)	L (inch)	Unit weight (kgs)	Unit weight (lb)	B.L. (kgs)	B.L. (lb)
SS316												
2360-5005	5		5.26	0.21	10	0.39	20	0.79	0.02	0.04	1,500	3,300
2360-5006	6		6.35	0.25	12	0.47	24	0.94	0.03	0.07	2,200	4,840
2360-5008	8		8.00	0.31	16	0.63	32	1.26	0.06	0.13	3,800	8,360
2360-5010	10		10.00	0.39	20	0.79	40	1.57	0.12	0.26	4,800	10,560
2360-5012	12		12.52	0.49	24	0.94	48	1.89	0.21	0.46	8,000	17,600

CODE: S360LK, SF360LKF

KINZI DATA SHEET

**100%**  
**RECYCLABLE**

[WWW.KINZI.COM](http://WWW.KINZI.COM)