

# PRODUCT DATA SHEET



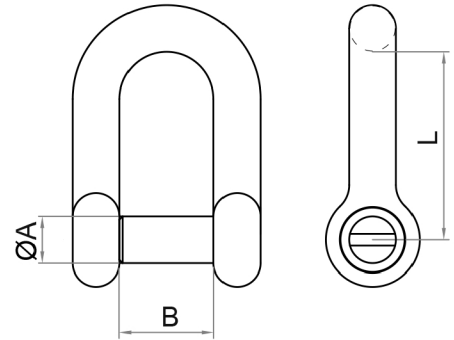
## PRODUCT - DATA

**S360C, SF360C**  
D-shackle (oval sink pin)

### S360C, SF360C

#### Technical Data

Casting material : AISI304 - DIN 1.4308/  
: AISI316 - DIN 1.4408  
Forging material : AISI304 - DIN 1.4301/  
: AISI316 - DIN 1.4401  
Production : S360C  
Shackle - Cast  
Pin - See chart  
SF360C  
Shackle - Forged  
Pin - Forged  
Surface treatment : "E.P." (Electro polished)



**Metric** S360C, SF360C  
D-shackle (oval sink pin)

Note : Standard safety factor for working load is 1/4 of breaking load

S360C		SIZE	ØA (mm)	ØA (inch)	B (mm)	B (inch)	L (mm)	L (inch)	PIN	Unit weight (kgs)	Unit weight (lb)	B.L. (kgs)	B.L. (lb)
SS304	SS316												
4360-4004	6360-4004	4	4	0.16	8	0.31	16	0.63	Forged	0.01	0.02	550	1,210
4360-4005	6360-4005	5	5	0.20	10	0.39	20	0.79	Forged	0.01	0.02	1,000	2,200
4360-4006	6360-4006	6	6	0.24	12	0.47	24	0.94	Forged	0.02	0.04	1,700	3,740
4360-4007	6360-4007	7	7	0.28	14	0.55	28	1.10	Forged	0.03	0.07	2,000	4,400
4360-4008	6360-4008	8	8	0.31	16	0.63	32	1.26	Forged	0.05	0.11	2,800	6,160
4360-4009	6360-4009	9	9	0.35	18	0.71	36	1.42	Forged	0.07	0.15	3,500	7,700
4360-4010	6360-4010	10	10	0.39	20	0.79	40	1.57	Forged	0.11	0.24	4,500	9,900
4360-4012	6360-4012	12	12	0.47	24	0.94	48	1.89	Forged	0.18	0.40	6,000	13,200
4360-4013	6360-4013	13	13	0.51	26	1.02	52	2.05	Cast	0.22	0.48	6,500	14,300
4360-4016	6360-4016	16	16	0.63	32	1.26	64	2.52	Forged	0.42	0.92	10,000	22,000
4360-4019	6360-4019	19	19	0.75	38	1.50	76	2.99	Cast	0.70	1.54	15,000	33,000
4360-4022	6360-4022	22	22	0.87	44	1.73	88	3.46	Cast	1.08	2.38	19,000	41,800
4360-4025	6360-4025	25	25	0.98	50	1.97	100	3.94	Cast	1.61	3.22	23,000	50,600

SF360C		SIZE	ØA (mm)	ØA (inch)	B (mm)	B (inch)	L (mm)	L (inch)	Pin	Unit weight (kgs)	Unit weight (lb)	B.L. (kgs)	B.L. (lb)
SS316													
2360-4008	8	8	0.31	16	0.63	32	1.26	Forged	0.05	0.11	3,500	7,700	
2360-4010	10	10	0.39	20	0.79	40	1.57	Forged	0.11	0.24	5,500	12,100	
2360-4012	12	12	0.47	24	0.94	48	1.89	Forged	0.18	0.40	7,500	16,500	
2360-4016	16	16	0.63	32	1.26	64	2.52	Forged	0.42	0.92	14,000	30,800	

**100%**  
**RECYCLABLE**

**WWW.KINZI.COM**

CODE: S360C, SF360C

KINZI DATA SHEET