

# PRODUCT DATA SHEET



## PRODUCT - DATA

**S3400**  
Turnbuckle toggle

### S3400

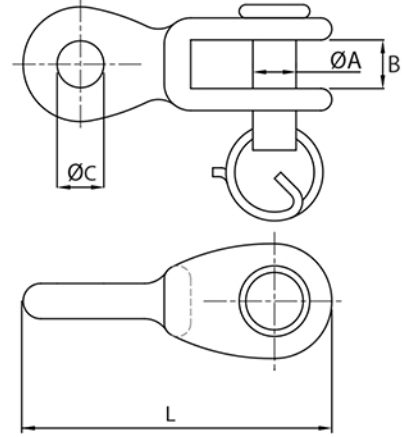
#### Technical Data

Casting material : AISI316 - DIN 1.4408  
 Forging material : AISI316 - DIN 1.4401  
 Production : S3400  
 Toggle - Cast  
 Pin - See chart  
 Surface treatment : "E.P." (Electro polished)

Note : Standard safety factor for working load is 1/4 of breaking load.



**M** Metric **S3400** Turnbuckle toggle



S3400 SS316	SIZE	ØA (mm)	ØA (inch)	B (mm)	B (inch)	ØC (mm)	ØC (inch)	L (mm)	L (inch)	Pin	Unit weight (kgs)	Unit weight (lb)	B.L. (kgs)	B.L. (lb)
6340-0005	5	5.0	0.20	5.5	0.22	5.3	0.21	35	1.38	Forged	0.01	0.02	1,000	2,200
6340-0006	6	6.0	0.24	6.5	0.26	6.8	0.27	41	1.61	Forged	0.02	0.04	1,250	2,750
6340-0008	8	8.0	0.31	9.0	0.35	8.5	0.33	49	1.93	Forged	0.04	0.09	1,700	3,740
6340-0010	10	9.0	0.35	11.0	0.43	10.0	0.39	58	2.28	Forged	0.07	0.15	3,100	6,820
6340-0012	12	12.0	0.47	12.0	0.47	13.2	0.52	78	3.07	Forged	0.15	0.33	4,650	10,230
6340-0014	14	14.2	0.56	13.0	0.51	15.0	0.59	92	3.62	Forged	0.22	0.48	5,750	12,650
6340-0016	16	16.0	0.63	15.0	0.59	16.5	0.65	116	4.57	Forged	0.37	0.81	8,150	17,930
6340-0020	20	16.0	0.63	20.0	0.79	16.5	0.65	158	6.22	Cast	0.76	1.67	9,400	20,680

CODE: S3400

KINZI DATA SHEET

**100%**  
**RECYCLABLE**

[WWW.KINZI.COM](http://WWW.KINZI.COM)