

PRODUCT DATA SHEET



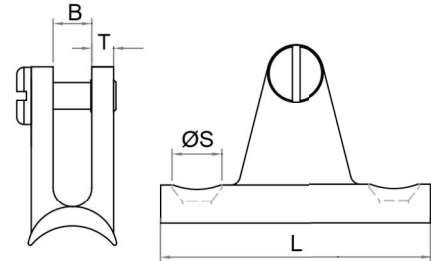
PRODUCT - DATA

S316061
Deck hinge (rail mount)

S316061

Technical Data

Casting material : AISI316 - DIN 1.4408
 Production : S316061 - Hinge - Cast
 Surface treatment : "M.P." (Mirror polished)/
 "E.P." (Electro polished)



 **S316061**
Deck hinge (rail mount)

S316061 SS316	SIZE	Surface treatment	B (mm)	B (inch)	L (mm)	L (inch)	ØS (mm)	ØS (inch)	T (mm)	T (inch)	Unit weight (kgs)	Unit weight (lb)
6316-0611	7/8"	E.P.	8	0.31	56	2.2	6	0.24	4.5	0.18	0.07	0.15
6316-0612	7/8"	M.P.	8	0.31	56	2.2	6	0.24	4.5	0.18	0.07	0.15

CODE: S316061

KINZI DATA SHEET

100%
RECYCLABLE

WWW.KINZI.COM