

PRODUCT DATA SHEET



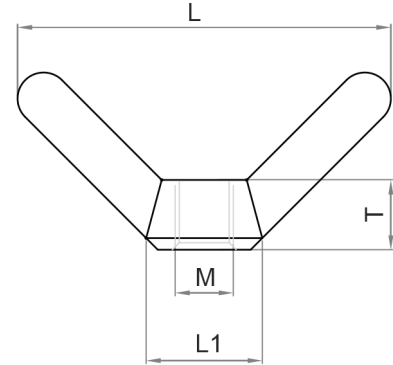
PRODUCT - DATA

S31501
Wide wing nut (long type)

S31501

Technical Data

Casting material : AISI304 - DIN 1.4308
 : AISI316 - DIN 1.4408
 Production : S31501 - Nut - Cast
 Surface treatment : "E.P." (Electro polished)



M Metric **S31501**
Wide wing nut (long type)

S31501		SIZE	L (mm)	L (inch)	L1 (mm)	L1 (inch)	M (mm)	T (mm)	T (inch)	Unit weight (kgs)	Unit weight (lb)
SS304	SS316										
4305-0108	6305-0108	8	51	2.01	16	0.63	M8	9.5	0.37	0.02	0.04
4305-0110	6305-0110	10	64	2.52	20	0.79	M10	12.0	0.47	0.03	0.07
4305-0112	6305-0112	12	74	2.91	23	0.91	M12	14.0	0.55	0.05	0.11
4305-0116	6305-0116	16	86	3.39	28	1.10	M16	16.0	0.63	0.08	0.18
4305-0120	6305-0120	20	108	4.25	36	1.42	M20	20.0	0.79	0.16	0.35
4305-0122	6305-0122	22	122	4.80	40	1.57	M22	22.0	0.87	0.22	0.48
4305-0124	6305-0124	24	134	5.28	45	1.77	M24	24.0	0.94	0.28	0.62

CODE: S31501

KINZI DATA SHEET

100%
RECYCLABLE

WWW.KINZI.COM