

PRODUCT DATA SHEET



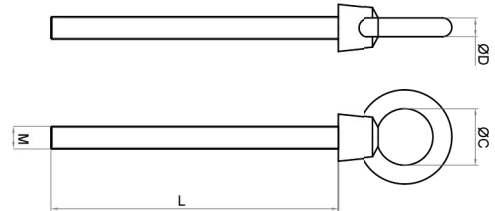
PRODUCT - DATA

S306 (Special) Eye bolt - SUS type

S306 (Special)

Technical Data

Casting material : AISI304 - DIN 1.4308/
AISI316 - DIN 1.4408
Forging material : AISI304 - DIN 1.4301/
AISI316 - DIN 1.4401
Production : S306 (Special)
Thread - Forged
Bolt - Cast
Surface treatment : "E.P." (Electro polished)



Note : Standard safety factor for working load
is 1/4 of breaking load



S306 (Special)
Eye bolt (SUS type)

S306 (Special)		SIZE	ØC (mm)	ØC (inch)	ØD (mm)	ØD (inch)	L (mm)	L (inch)	M (mm/inch)	Unit weight (kgs)	Unit weight (lb)	B.L. (kgs)	B.L. (lb)
SS304	SS316												
4306-0638	6306-0638	6*38	16	0.63	5.0	0.20	38	1.5	M6	0.02	0.04	1,100	2,420
4306-0650	6306-0650	6*50	16	0.63	5.0	0.20	50	1.97	M6	0.03	0.07	1,100	2,420
4306-0850	6306-0850	8*50	20	0.79	6.2	0.24	50	1.97	M8	0.05	0.11	1,800	3,960
4306-1050	6306-1050	10*50	25	0.98	8.0	0.31	50	1.97	M10	0.09	0.20	2,600	5,720
4306-1250	6306-1250	12*50	30	1.18	10.0	0.39	50	1.97	M12	0.16	0.35	3,500	7,700
4306-1650	6306-1650	16*50	35	1.38	12.5	0.49	50	1.97	M16	0.29	0.64	8,000	17,600
4306-2050	6306-2050	20*50	40	1.57	16.0	0.63	50	1.97	M20	0.50	1.10	10,500	23,100
4306-2080	6306-2080	20*80	40	1.57	16.0	0.63	80	3.15	M20	0.56	1.23	10,500	23,100
4306-2415	6306-2415	24*150	50	1.97	20.0	0.79	150	5.91	M24	0.70	1.54	14,550	32,010
4306-4122	6306-4122	1/4***2"	16	0.63	5.0	0.20	50.8	2"	1/4"	0.03	0.07	1,100	2,420
4306-5162	6306-5162	5/16***2"	20	0.79	6.2	0.24	50.8	2"	5/16"	0.05	0.11	1,800	3,960
4306-8032	6306-3082	3/8***2"	25	0.98	8.0	0.31	50.8	2"	3/8"	0.08	0.18	2,600	5,720
4306-2012	6306-2012	1/2***2"	30	1.18	10.0	0.39	50.8	2"	1/2"	0.17	0.37	3,400	7,480
4306-5802	6306-5802	5/8***2"	35	1.38	12.5	0.49	50.8	2"	5/8"	0.29	0.64	8,000	17,600
4306-3042	6306-3042	3/4***2"	40	1.57	16.0	0.63	50.8	2"	3/4"	0.49	1.08	10,500	23,100

CODE: S306 (Special)

KINZI DATA SHEET

100%
RECYCLABLE

WWW.KINZI.COM