

PRODUCT DATA SHEET



PRODUCT - DATA

FS2A(R) SRS fork (duplex)

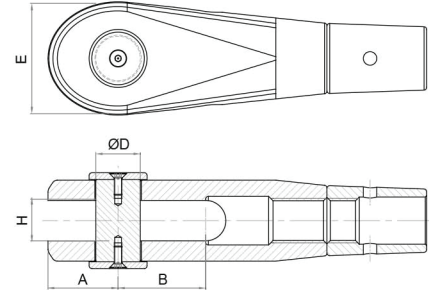
FS2A(R)

Technical Data

- Fork : Casting Duplex (Grade4A)
- Lock Nut : Casting material
- Pin : AISI316, EN 1.4408
- Pin : Bar 316
- Surface treatment : "M.F." (Matte finished) M16-M45
"G.F." (Gloss finished) M56-M100
- MBL : Minimum Breaking Load before cable assembly.
- Limit Tension : Recommended maximum load for a tension member. All other applications should consider ¾ of MBL*.
- TAP : ST03.0-2



M Metric **FS2A**
SRS fork (duplex)



FS2A SS316	SIZE M (mm)	A (mm)	A (inch)	B (mm)	B (inch)	ØD (mm)	ØD (inch)	E (mm)	E (inch)	H (mm)	H (inch)	Unit weight (kgs)	Unit weight (lb)	Yield Load Tension (kN)	Tensile Load (kN)
FS2A-0006NB	M6	9.0	0.35	12.0	0.47	6.5	0.26	17	0.67	7	0.28	0.03	0.07	6.2	12.5
FS2A-0008NB	M8	12.0	0.47	16.0	0.63	8.0	0.31	22	0.87	9	0.35	0.06	0.13	11.3	22.7
FS2A-0010NB	M10	15.0	0.59	20.0	0.79	10.0	0.39	28	1.10	11	0.43	0.15	0.33	18.0	36.0
FS2A-0012NB	M12	18.0	0.71	30.5	1.20	12.5	0.49	34	1.34	13	0.51	0.27	0.59	26.1	52.3
FS2A-0014NB	M14	22.0	0.87	28.0	1.10	14.0	0.55	39	1.54	14	0.55	0.38	0.84	35.7	71.3
FS2A-0016NB	M16	28.0	1.10	32.0	1.26	16.0	0.63	45	1.77	16	0.63	0.67	1.47	44.0	87.0
FS2A-0020NB	M20	34.0	1.34	40.0	1.57	20.0	0.79	55	2.17	20	0.79	1.26	2.77	68.0	137.0
FS2A-0022NB	M22	36.0	1.42	45.0	1.77	22.0	0.87	60	2.36	22	0.87	1.67	3.67	84.0	169.0
FS2A-0024NB	M24	42.0	1.65	50.0	1.97	25.0	0.98	68	2.68	24	0.94	2.12	4.66	98.0	197.0
FS2A-0030NB	M30	46.0	1.81	60.0	2.36	30.0	1.18	75	2.95	26	1.02	2.82	6.20	157.0	314.0
FS2A-0033NB	M33	52.0	2.05	65.0	2.56	33.0	1.30	84	3.31	30	1.18	4.15	9.13	194.0	388.0
FS2A-0036NB	M36	55.0	2.17	70.0	2.76	36.0	1.42	90	3.54	34	1.34	5.26	11.57	228.0	457.0
FS2A-0039NB	M39	60.0	2.36	75.0	2.95	39.0	1.54	98	3.86	36	1.42	6.74	14.83	273.0	546.0
FS2A-0042NB	M42	65.0	2.56	80.0	3.15	42.0	1.65	105	4.13	40	1.57	8.14	17.91	313.0	627.0
FS2A-0045NB	M45	70.0	2.76	85.0	3.35	45.0	1.77	112	4.41	42	1.65	9.96	21.91	365.0	731.0
FS2A-0048NB	M48	75.0	2.95	90.0	3.54	48.0	1.89	120	4.72	45	1.77	12.38	27.24	412.0	824.0
FS2A-0052NB	M52	80.0	3.15	95.0	3.74	52.0	2.05	132	5.20	50	1.97	15.54	34.19	492.0	984.0
FS2A-0056NB	M56	85.0	3.35	105.0	4.13	56.0	2.20	142	5.59	50	1.97	18.51	40.72	568.0	1,136.0
FS2A-0060NB	M60	90.0	3.54	110.0	4.33	60.0	2.36	152	5.98	55	2.17	23.25	51.15	661.0	1,322.0
FS2A-0064NB	M64	95.0	3.74	118.0	4.65	64.0	2.52	160	6.30	56	2.20	26.92	59.22	749.0	1,498.0
FS2A-0068NB	M68	100.0	3.94	125.0	4.92	68.0	2.68	174	6.85	61	2.40	31.88	70.14	855.0	1,710.0
FS2A-0072NB	M72	108.0	4.25	130.0	5.12	72.0	2.83	184	7.24	66	2.60	37.82	83.20	969.0	1,939.0
FS2A-0076NB	M76	115.0	4.53	140.0	5.51	76.0	2.99	195	7.68	72	2.83	41.23	90.71	1,088.0	2,177.0
FS2A-0080NB	M80	122.0	4.80	145.0	5.71	80.0	3.15	205	8.07	72	2.83	48.60	106.92	1,216.0	2,432.0
FS2A-0085NB	M85	132.0	5.20	155.0	6.10	85.0	3.35	218	8.58	76	2.99	57.87	127.31	1,385.0	2,770.0
FS2A-0090NB	M90	140.0	5.51	165.0	6.50	90.0	3.54	228	8.98	82	3.23	71.25	156.75	1,565.0	3,130.0
FS2A-0100NB	M100	150.0	5.91	180.0	7.09	100.0	3.94	252	9.92	88	3.46	96.78	212.92	1,960.0	3,920.0

RIGHT HAND THREAD

CODE: FS2A(R)

KINZI DATA SHEET

100%
RECYCLABLE

WWW.KINZI.COM

PRODUCT DATA SHEET



PRODUCT - DATA

FS2B(L) SRS fork (duplex)

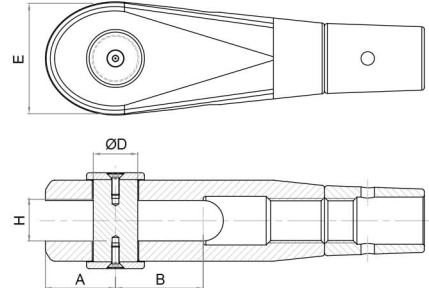
FS2B(L)

Technical Data

Fork	: Casting Duplex (Grade4A)
Lock Nut	: Casting material
	: AISI316, EN 1.4408
Pin	: Bar 316
Surface treatment	: "M.F." (Matte finished) M16-M45
	: "G.F." (Gloss finished) M56-M100
MBL	: Minimum Breaking Load
	: before cable assembly.
Limit Tension	: Recommended maximum
	: load for a tension member.
	: All other applications should
	: consider ¼ of MBL*.
TAP	: ST03.0-2



M Metric **FS2B**
SRS fork (duplex)



FS2B SS316	SIZE M (mm)	A (mm)	A (inch)	B (mm)	B (inch)	ØD (mm)	ØD (inch)	E (mm)	E (inch)	H (mm)	H (inch)	Unit weight (kgs)	Unit weight (lb)	Yield Load Tension (kN)	Tensile Load (kN)
FS2B-0006NB	M6	9.0	0.35	12.0	0.47	6.5	0.26	17	0.67	7	0.28	0.03	0.07	6.2	12.5
FS2B-0008NB	M8	12.0	0.47	16.0	0.63	8.0	0.31	22	0.87	9	0.35	0.06	0.13	11.3	22.7
FS2B-0010NB	M10	15.0	0.59	20.0	0.79	10.0	0.39	28	1.10	11	0.43	0.15	0.33	18.0	36.0
FS2B-0012NB	M12	18.0	0.71	30.5	1.20	12.5	0.49	34	1.34	13	0.51	0.27	0.59	26.1	52.3
FS2B-0014NB	M14	22.0	0.87	28.0	1.10	14.0	0.55	39	1.54	14	0.55	0.38	0.84	35.7	71.3
FS2B-0016NB	M16	28.0	1.10	32.0	1.26	16.0	0.63	45	1.77	16	0.63	0.67	1.47	44.0	87.0
FS2B-0020NB	M20	34.0	1.34	40.0	1.57	20.0	0.79	55	2.17	20	0.79	1.26	2.77	68.0	137.0
FS2B-0022NB	M22	36.0	1.42	45.0	1.77	22.0	0.87	60	2.36	22	0.87	1.67	3.67	84.0	169.0
FS2B-0024NB	M24	42.0	1.65	50.0	1.97	25.0	0.98	68	2.68	24	0.94	2.12	4.66	98.0	197.0
FS2B-0030NB	M30	46.0	1.81	60.0	2.36	30.0	1.18	75	2.95	26	1.02	2.82	6.20	157.0	314.0
FS2B-0033NB	M33	52.0	2.05	65.0	2.56	33.0	1.30	84	3.31	30	1.18	4.15	9.13	194.0	388.0
FS2B-0036NB	M36	55.0	2.17	70.0	2.76	36.0	1.42	90	3.54	34	1.34	5.26	11.57	228.0	457.0
FS2B-0039NB	M39	60.0	2.36	75.0	2.95	39.0	1.54	98	3.86	36	1.42	6.74	14.83	273.0	546.0
FS2B-0042NB	M42	65.0	2.56	80.0	3.15	42.0	1.65	105	4.13	40	1.57	8.14	17.91	313.0	627.0
FS2B-0045NB	M45	70.0	2.76	85.0	3.35	45.0	1.77	112	4.41	42	1.65	9.96	21.91	365.0	731.0
FS2B-0048NB	M48	75.0	2.95	90.0	3.54	48.0	1.89	120	4.72	45	1.77	12.38	27.24	412.0	824.0
FS2B-0052NB	M52	80.0	3.15	95.0	3.74	52.0	2.05	132	5.20	50	1.97	15.54	34.19	492.0	984.0
FS2B-0056NB	M56	85.0	3.35	105.0	4.13	56.0	2.20	142	5.59	50	1.97	18.51	40.72	568.0	1,136.0
FS2B-0060NB	M60	90.0	3.54	110.0	4.33	60.0	2.36	152	5.98	55	2.17	23.25	51.15	661.0	1,322.0
FS2B-0064NB	M64	95.0	3.74	118.0	4.65	64.0	2.52	160	6.30	56	2.20	26.92	59.22	749.0	1,498.0
FS2B-0068NB	M68	100.0	3.94	125.0	4.92	68.0	2.68	174	6.85	61	2.40	31.88	70.14	855.0	1,710.0
FS2B-0072NB	M72	108.0	4.25	130.0	5.12	72.0	2.83	184	7.24	66	2.60	37.82	83.20	969.0	1,939.0
FS2B-0076NB	M76	115.0	4.53	140.0	5.51	76.0	2.99	195	7.68	72	2.83	41.23	90.71	1,088.0	2,177.0
FS2B-0080NB	M80	122.0	4.80	145.0	5.71	80.0	3.15	205	8.07	72	2.83	48.60	106.92	1,216.0	2,432.0
FS2B-0085NB	M85	132.0	5.20	155.0	6.10	85.0	3.35	218	8.58	76	2.99	57.87	127.31	1,385.0	2,770.0
FS2B-0090NB	M90	140.0	5.51	165.0	6.50	90.0	3.54	228	8.98	82	3.23	71.25	156.75	1,565.0	3,130.0
FS2B-0100NB	M100	150.0	5.91	180.0	7.09	100.0	3.94	252	9.92	88	3.46	96.78	212.92	1,960.0	3,920.0

CODE: FS2B(L)

KINZI DATA SHEET

100%
RECYCLABLE

WWW.KINZI.COM