

RACHAEL RUDDICK



A FULL
SERVICE
CREATIVE
FIRM
SPECIALIZING IN
INTERIOR,
FURNITURE
AND PRODUCT
DESIGN.

INTRODUCTION

RACHAEL RUDDICK IS A FULL SERVICE CREATIVE FIRM SPECIALIZING IN INTERIOR, FURNITURE AND PRODUCT DESIGN BASED IN FLORIDA AND NEW YORK.

FOUNDED IN 2008 AS A TRAVEL AND LEATHER GOODS BRAND IN AUSTRALIA, THE NOW US BASED COMPANY HAS EVOLVED INTO AN INTERDISCIPLINARY LIFESTYLE LINE AND ATELIER.

THE NOTION OF UNCOMPLICATED LIVING ECHOES RACHAEL'S RELAXED ANTIPODEAN UPBRINGING AND HAS ALWAYS UNDERPINNED THE BRAND DESIGN ETHOS.

EXPOSURE TO DESIGN ELEMENTS VIA HER FAMILY OF PROPERTY DEVELOPERS ALLOWED RACHAEL'S PASSION FOR AESTHETICS, ENTERTAINING AND REJUVENATION TO MATURE.

LATER, IN A CAREER SPANNING OVER 20 YEARS, AS A SENIOR BUSINESS EXECUTIVE WITH LVMH SAW RACHAEL WORKING WITH BRANDS CHRISTIAN DIOR, LOUIS VUITTON, GIVENCHY, MOËT AND CHANDON AND DOM PERIGNON. DURING THIS TENURE SHE FINETUNED HER KNOWLEDGE OF LUXURY BRAND BUILDING AS WELL AS HER DESIGN EYE, WITH FURTHER TRAVELS TAKING HER ABROAD TO LIVE IN PARIS, LONDON, MILAN, SÃO PAULO, LOS ANGELES AND NEW YORK.

WHILST AT LVMH, RUDDICK LED GLOBAL EXPERIENCES AND WAS AT CONCEPT STAGE OF MULTIPLE STORE AND SPACE DESIGNS, AND CAMPAIGN AND EVENT CREATION, WORKING WITH ARCHITECTS DESIGNERS AND CONTRACTORS. WHEN THE COMPANY EXPANDED TO THE UNITED STATES AND THE UK, RACHAEL LAUNCHED HER INTERDISCIPLINARY STUDIO FOR COMMERCIAL AND RESIDENTIAL SPACES. SHE HAS SEEN SUCCESS WITH SIGNIFICANT GLOBAL COLLABORATIONS AND PIONEERING DESIGN IN EVENTS AND SPACES.

CONTINUED EXPOSURE TO RESIDENTIAL DESIGN, RETAIL OPERATIONS AND HOSPITALITY HAS ALLOWED THE RACHAEL RUDDICK BRAND TO EXTEND THE ATELIER INTO HOME, WITH TABLE ACCOUTREMENT, TRAVEL ESSENTIALS AND FURNITURE.

THE BRAND HAS BEEN A LEADER IN THE CONTEMPORARY LEATHER GOODS ARENA IN SYDNEY, LONDON AND TOKYO.



INTERIOR DESIGN

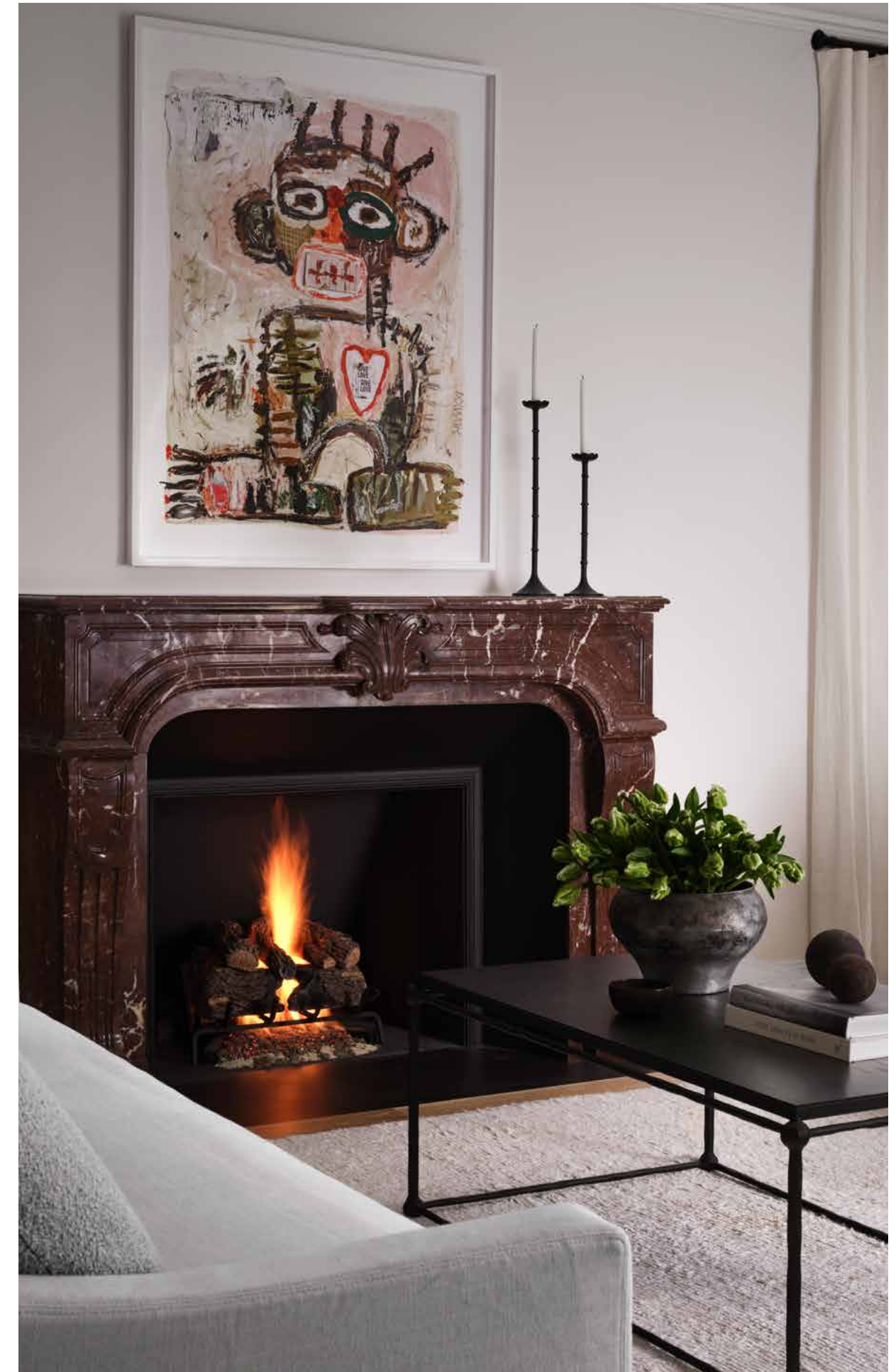
ETHOS

THE NOTION OF UNCOMPLICATED LIVING ECHOES RACHAEL'S RELAXED ANTIPODEAN UPBRINGING AND HAS ALWAYS UNDERPINNED THE BRAND DESIGN ETHOS.

WHILST RACHAEL'S SIGNATURE STYLE DENOTES LUXURY, IT IS ALWAYS MERGED WITH A RIGOUR – DELVING INTO CLIENTS' VISION AND THE HISTORY OF A PROJECT.

ENGRAINED IS A SEAMLESS FLOW AND A FOCUS OF LIVING INDOORS AND OUTDOORS.

WE LIKE TO THINK THAT NO TWO PROJECTS OR ROOMS WE CREATE ARE ALIKE. WE WEAVE TOGETHER TEXTURES, CLIENTS' HEIRLOOMS, COLLECTED AND MODERN PIECES, SEAMLESSLY RESULTING IN A COHESIVE BALANCE OF BEAUTY, CALM AND SPACE.







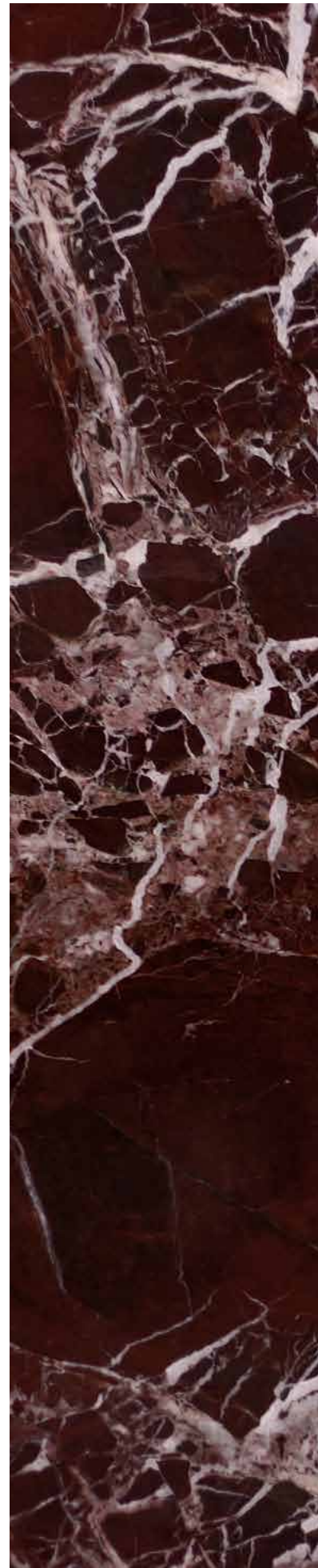
LUXURY MARBLE

FURNITURE

WE BRING
YOUR VISION
IN MARBLE
TO LIFE.
FROM *CUSTOM*
FURNITURE
TO BESPOKE
INTERIOR
PIECES.

GROWING UP *in* AUSTRALIA
ENTERTAINING AT HOME
is PART *of* OUR
IDENTITY *and* CULTURE.
CREATING *a* UNIQUELY
PERSONAL SPACE *is a*
PRIORITY, WE SHARE
the SAME VISION *in*
EVERY SPACE WE ENVISION.





ROSSO



VIOLA



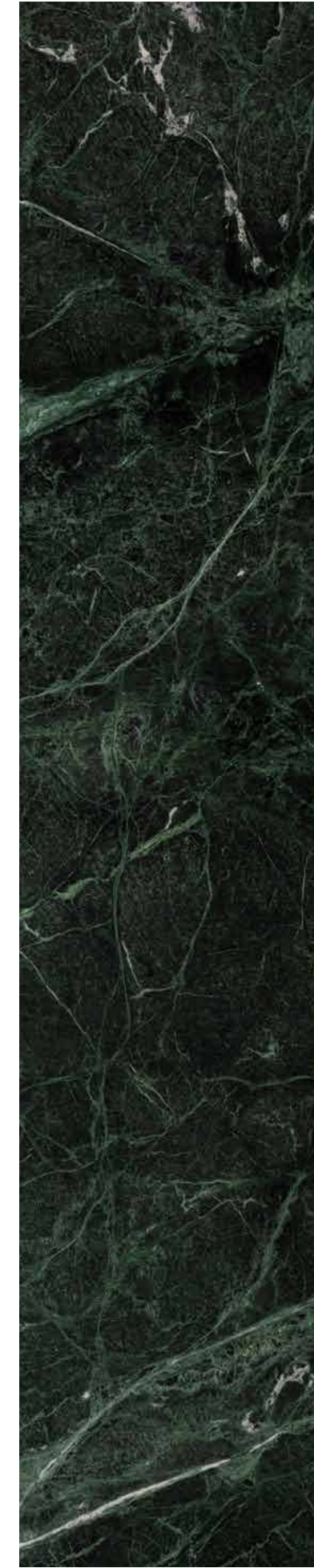
CALACATTA



WHITE ONYX



PORTORO



VERDE



GREEN ONYX

ROXBURGH COFFEE TABLE

DIMENSIONS 4'2"W X 1'11"D X 11.5"-15"H
PRODUCT CODE ROX4600
LEAD TIME 2 - 4 WEEKS, EX BROOKLYN.
MATERIALS VIOLA
PORTORO
ROSSO

THE ROXBURGH TABLE ALLOWS BOTH SIDES TO BE PLACED AS A BOOKMATCH OR CAN BE CONVERTED TO A NESTING STYLE COFFEE TABLE.





EATON DEMI LUNE SIDE TABLE

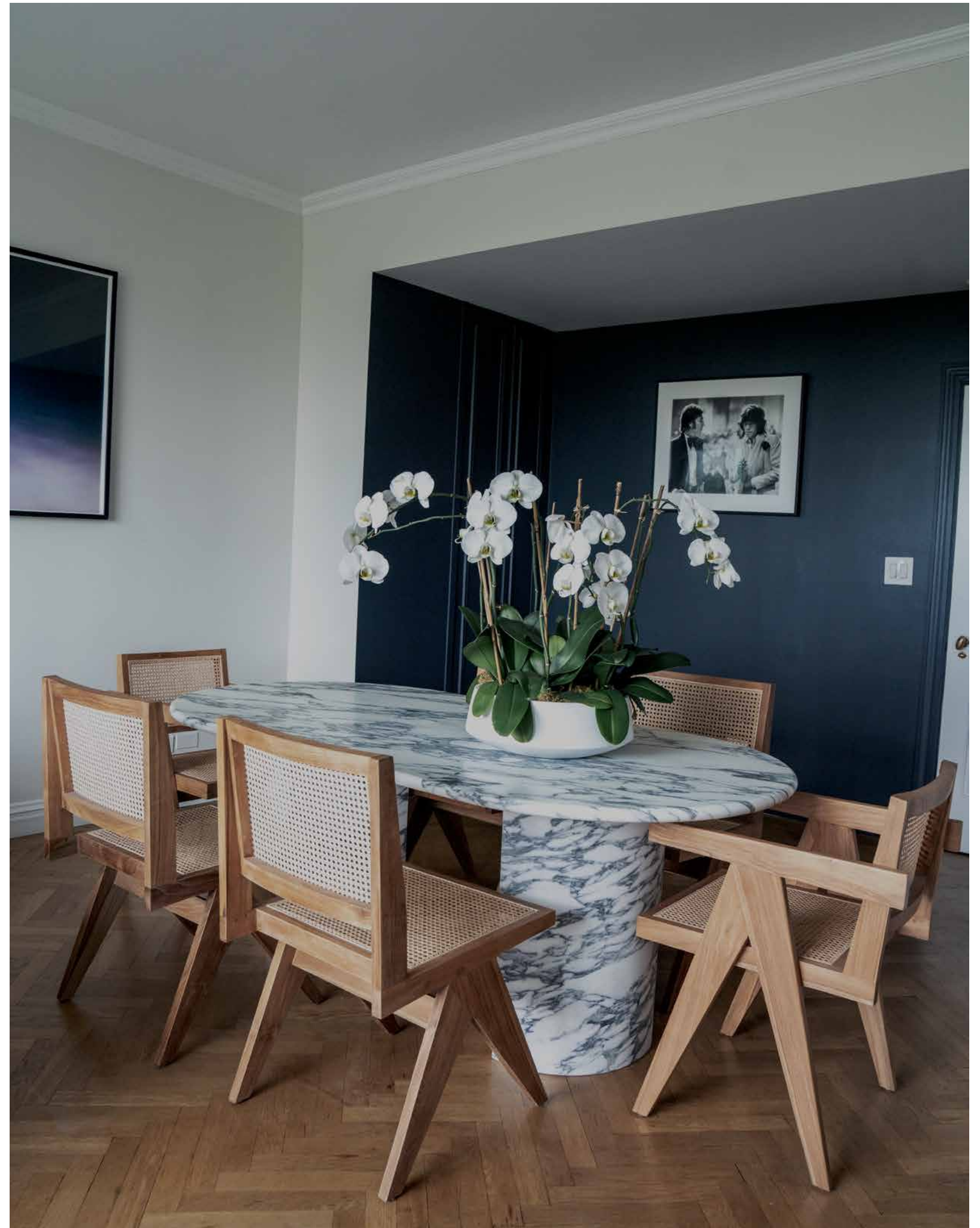
DIMENSIONS	23.5" W X 11 3/4" D X 23.5" H
PRODUCT CODE	EAT46001
LEAD TIME	2 - 4 WEEKS, EX BROOKLYN.
MATERIALS	VIOLA PORTORO VERDE

THE EATON DEMI LUNE SIDE TABLE CAN BE PLACED ON ITS OWN OR TWO PLACED TOGETHER TO CREATE A ROUND TABLE.

COURTFIELD DINING TABLE

DIMENSIONS 38" W X 76" D
PRODUCT CODE CD46001
LEAD TIME 2 - 4 WEEKS, EX BROOKLYN.
MATERIALS VIOLA
PORTORO
VERDE
ROSSO

A UNIQUE TIMELESS DINING TABLE THAT OFFERS SPACE FOR UP TO SIX SEATS.



EATON DEMI LUNE COFFEE TABLE

DIMENSIONS 1'11"W X 2'1"D X 11.5" - 15"H
PRODUCT CODE EAT46002
LEAD TIME 2 - 4 WEEKS, EX BROOKLYN.
MATERIALS VIOLA
PORTORO
VERDE
CALACATTA

THE COFFEE TABLE IS DESIGNED TO BE SEPARATED AND PLACED ON ITS OWN, OR TOGETHER TO CREATE AN OVAL TABLE.





FONTENAY PLINTH

DIMENSIONS 10" W X 10" D X 1'6" H

PRODUCT CODE FON4600

LEAD TIME 2 - 4 WEEKS, EX BROOKLYN.

MATERIALS WHITE ONYX
VIOLA
PORTORO
VERDE

THE SQUARE FONTENAY PLINTH CAN BE
USED AS A SCULPTURAL OBJECT ITSELF.

BOX SIDE TABLE

DIMENSIONS	23.5" W X 11 3/4" D X 23.5" H
PRODUCT CODE	BS46001
LEAD TIME	2 - 4 WEEKS, EX BROOKLYN.
MATERIALS	VIOLA PORTORO VERDE ROSSO CALACATTA

THE BOX TABLE OFFERS PLENTY OF SPACE ON TOP BUT ALSO ON THE HIDDEN SIDES. AT THE SAME TIME IT IS AESTHETIC ON IT'S OWN AS AN OBJECT.





APERITIVO COLUMN

DIMENSIONS	1'11" W X 2'1" D X 11.5" - 15" H
PRODUCT CODE	AP46001
LEAD TIME	2 - 4 WEEKS, EX BROOKLYN.
MATERIALS	ROSSO PORTORO VERDE CALACATTA

THE HEXAGONAL APERITIVO COLUMN IS A NEAT PLINTH WITH A WIDTH TO CARRY A WINE GLASS, VASE OR SCULPTURE.

CATCHALL

DIMENSIONS

7.8"D X 1.5"H

PRODUCT CODE

CAT46001

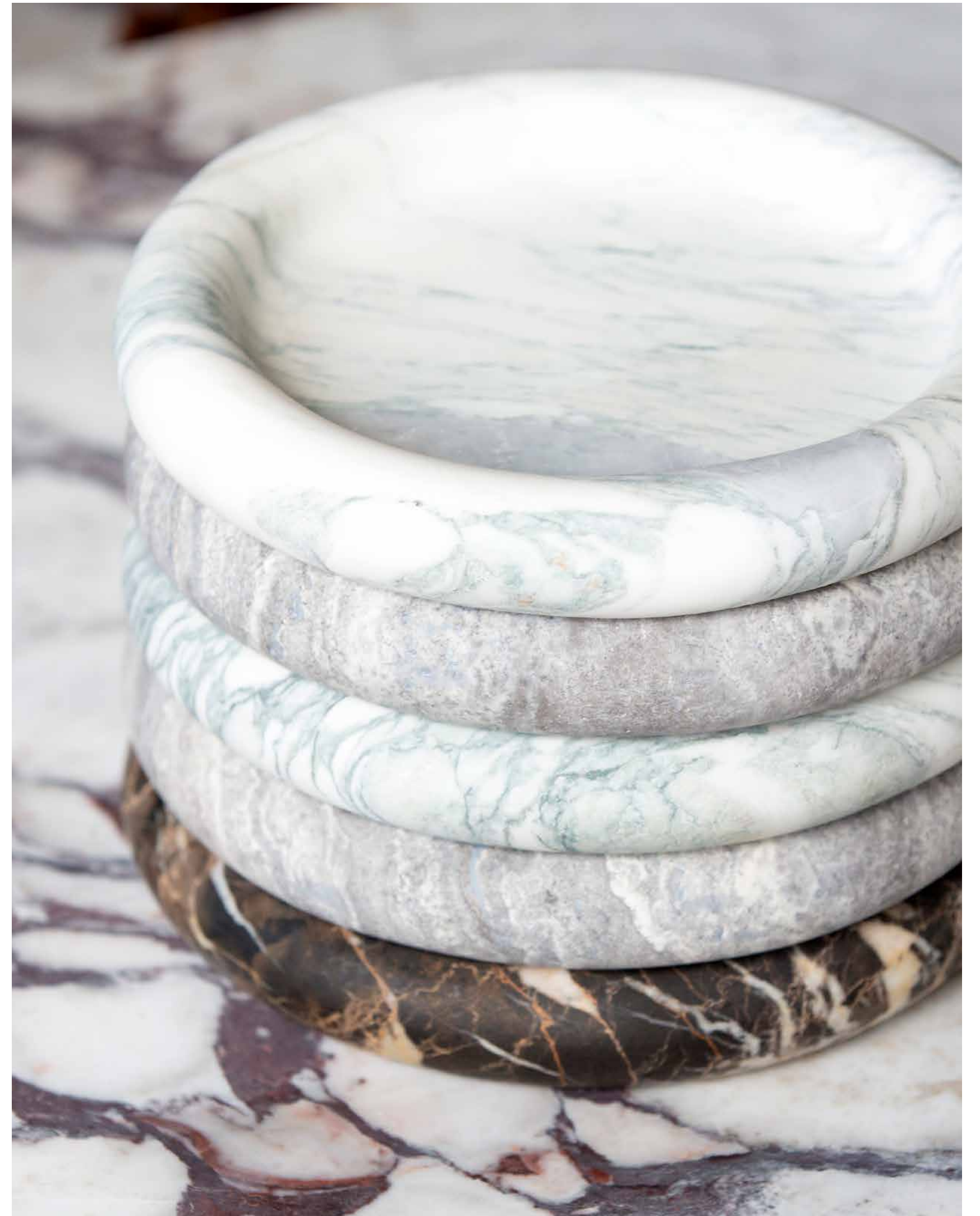
LEAD TIME

2 - 4 WEEKS, EX BROOKLYN.

MATERIALS

VIOLA
PORTORO
VERDE
GREEN ONYX

THIS CIRCULAR CATCHALL WITH ROUNDED EDGES IS AN ACCESSORY EVERYONE NEEDS IN THEIR HOME. THESE BEAUTIFUL CATCHALLS ARE CRAFTED FROM HANDPICKED MARBLE.







GRACE SIDE TABLE MEDIUM

DIMENSIONS L: 2'11 1/8" W:1'10" H:2'9"

PRODUCT CODE GRA46001

LEAD TIME 2 - 4 WEEKS, EX BROOKLYN.

MATERIALS CALACATTA

AVAILABLE IN TWO SIZES, THE GRACE PROVIDES A PUNCTUATION AND ARTISTIC STATEMENT IN A LIVING SPACE.

GRACE SIDE TABLE SMALL

DIMENSIONS L:2' 5 1/4" W:1' 7 7/8" H: 2'2"
PRODUCT CODE GRA46002
LEAD TIME 2 - 4 WEEKS, EX BROOKLYN.
MATERIALS GREEN ONYX

AVAILABLE IN TWO SIZES, THE GRACE PROVIDES A PUNCTUATION AND ARTISTIC STATEMENT IN A LIVING SPACE.





GRACE CONSOLE

DIMENSIONS	L: 7' 1 1/2" W:1' 7 1/2" H:3' 4 3/4"
PRODUCT CODE	GRA46003
LEAD TIME	2 - 4 WEEKS, EX BROOKLYN.
MATERIALS	GREEN ONYX

A HIGHLIGHT PIECE IN A LIVING OR DINING SPACE. THE GRACE CONSOLE IS AVAILABLE IN TWO LENGTHS

XPLRNTNOCACSIDEMTABLE MEDIUM

DIMENSIONS L: 19" W: 21" D: 11.5" H: 1/4" H

PRODUCT CODE AT460011

LEAD TIME 2 - 4 WEEKS, EX BROOKLYN.

MATERIALS
PORTORO
VERDE
CALACATTA

PLACED AS INDIVIDUAL TABLES OR COMBINED
AS THE HEXAGONAL STAIRCASE, THEY ARE
STYLISH AND FUNCTIONAL IN THE HOME OR
OFFICE. THEY ARE THE PERFECT ACCENT
PIECE FOR ANY INTERIOR.





XPLORATION ACCIDENTABLE LARGE

DIMENSIONS	L: 18" W: 2'13" D: 11.5" 1/4" H
PRODUCT CODE	AT46002
LEAD TIME	2 - 4 WEEKS, EX BROOKLYN.
MATERIALS	BOSCOATTA PORTORO VERDE CALACATTA

PLACED AS INDIVIDUAL TABLES OR COMBINED AS HEXAGONAL STAR TABLES, THEY'RE STUNNING AS SINGLE PIECES OR AS A GROUP OF FOUR IN A CORNER OR ANYWHERE YOU WANT TO CAPTURE.

VILLA NOVA CONSOLE

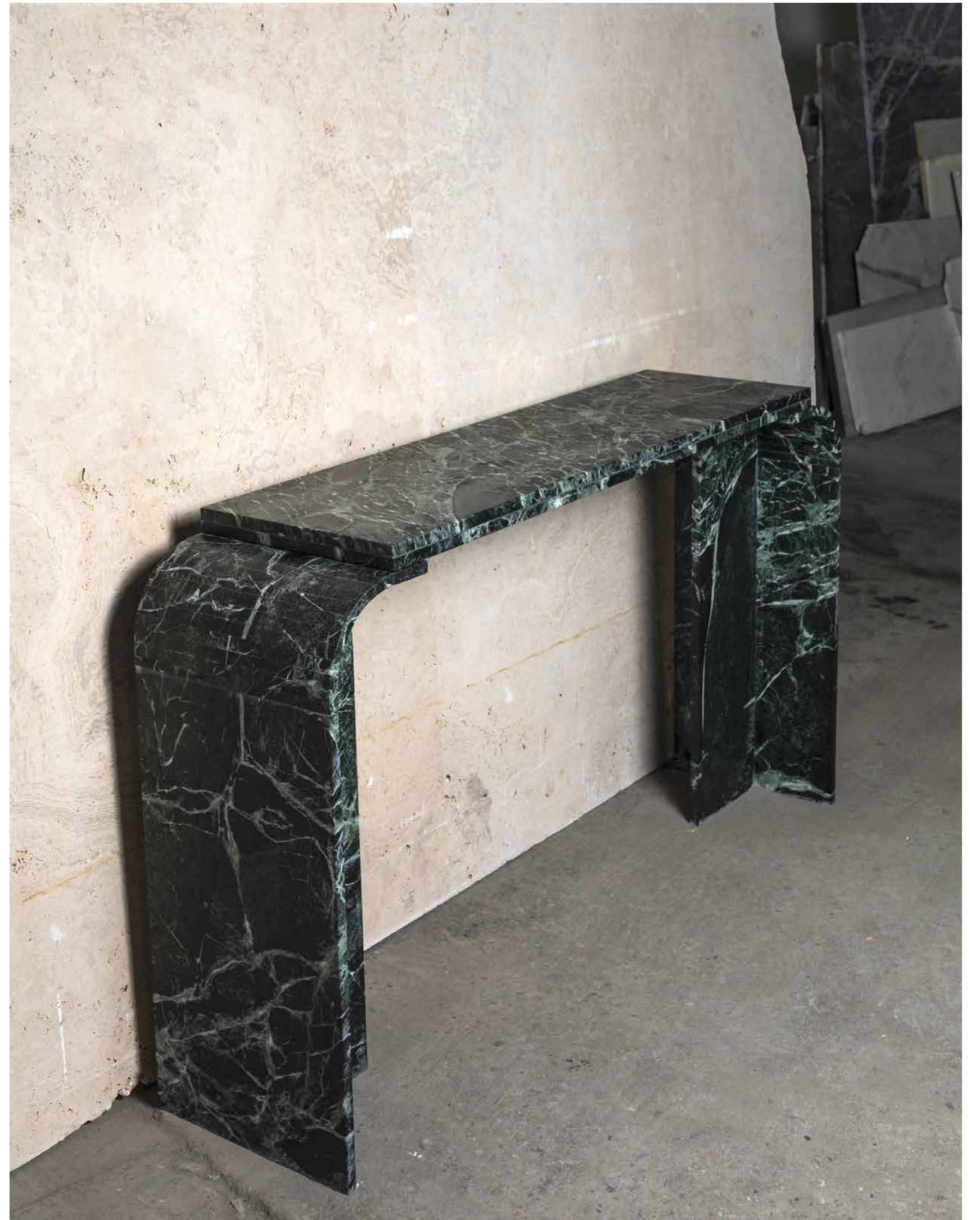
DIMENSIONS L: 6' 7/16" W: 1' 2" H: 2' 9 3/4"

PRODUCT CODE VIL46002

LEAD TIME 2 - 4 WEEKS, EX BROOKLYN.

MATERIALS VERDE

AN ELEGANT CONSOLE INSPIRED BY 70S AVANT GARDE. THE LENGTH IS ADJUSTABLE BY 5"





EATON SCONCE

DIMENSIONS	W: 7 1/4" H: 5'5 3/16"
PRODUCT CODE	EAT46001
LEAD TIME	2 - 4 WEEKS, EX BROOKLYN.
MATERIALS	GREEN ONYX

THE ADJUSTABLE REFLECTORS CAN BE MOUNTED HORIZONTALLY OR VERTICALLY AND ALLOW AN ELEGANT GLOW FROM BOTH SIDES OF THE REFLECTOR.

EATON FLOOR LAMP

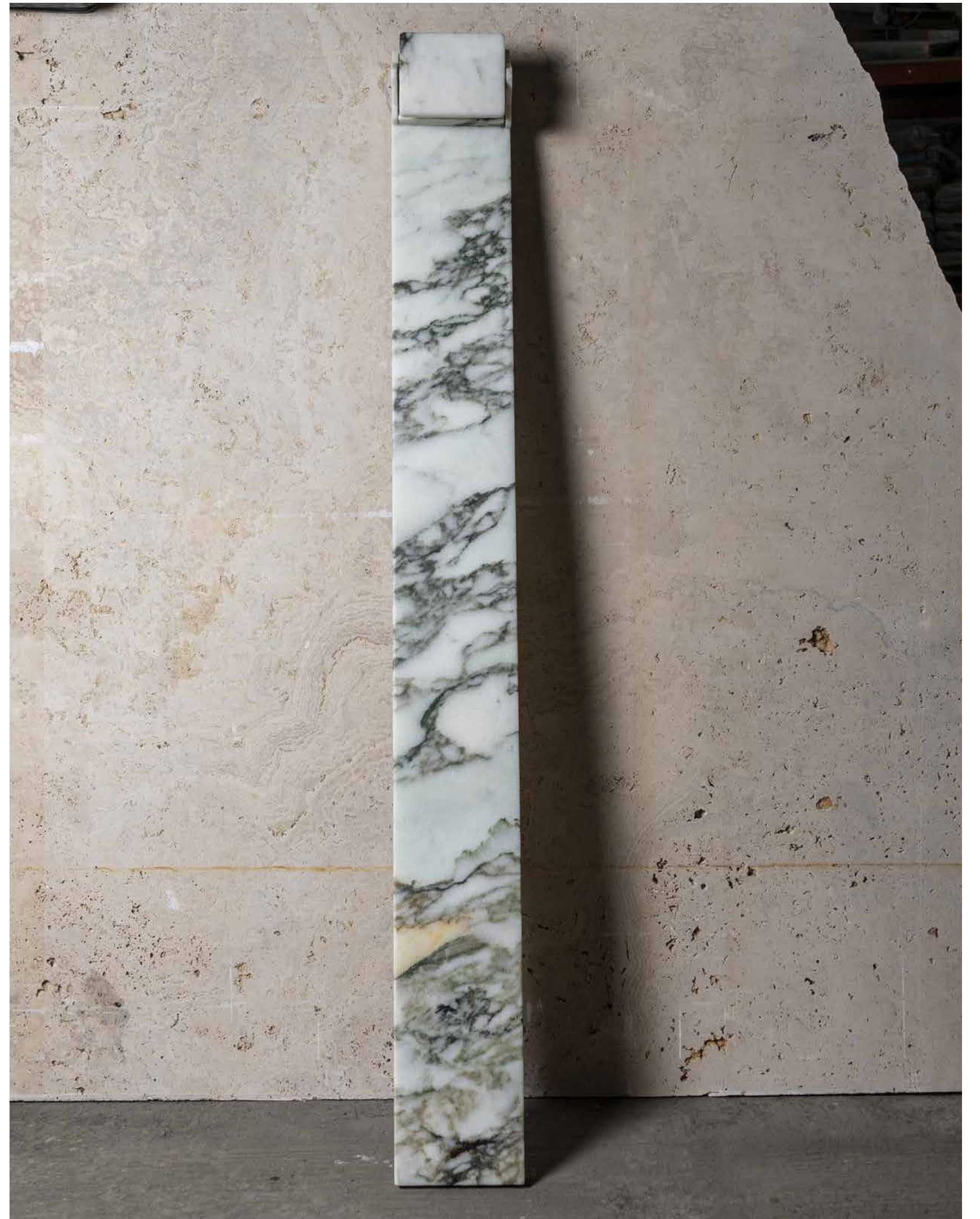
DIMENSIONS W: 7 1/4" H: 5'5 3/16"

PRODUCT CODE EAT46002

LEAD TIME 2 - 4 WEEKS, EX BROOKLYN.

MATERIALS CALACATTA

OUR ELEGANT FLOOR LAMP PROVIDES AN AMBIENT GLOW ALONG THE MARBLE STRIP AND ABOVE.







RACHAEL RUDDICK