

ERGO  **PEDIC**®
comfort in Motion

USER MANUAL



1: FORWARD:

Dear Customer;

The team from Ergo Pedic would like to thank you for the confidence you've placed in our Patent US 9642 757 B2 Tilt Function adjustable bed.

You have received a product designed with a high degree of functionality, quality and safety. The team is committed to thoroughly test, inspect and carefully package your product before leaving our factory. The bed you received left our care in perfect condition. When you accept delivery of the Tilt Function adjustable bed, you are responsible for the proper and safe use according to its intended purpose.

We ask that you read this document carefully before using and mind the safety notes listed. Any failure, loss of use caused by ignoring or improper use as noted in this document, will void the warranty.

PLEASE KEEP THIS DOCUMENT FOR FUTURE REFERENCE:

If you have any questions or concerns about the content of this document or the installation and operation of the Tilt Function adjustable bed, please contact your retail dealer for assistance.

2: SAFETY NOTES:

This product complies with all relevant safety regulations.

2.1: Please read this document carefully before using the bed for the first time. This document contains important information regarding installation, use and safety of your Tilt Function adjustable bed.

2.2: The manufacturer does not accept liability if these instructions are not followed.

2.3: Please contact an authorized technician or your retail dealer if any part or component of the bed needs repair or replacement; in particular any electrical components. Do not attempt to open or repair any electrical components except to replace batteries.

2.4: Please keep all documents in a safe place for future reference.

2.5: Do Not Overload the bed. All weight limits include the mattress

Weight limits: Twin 450 lbs., Full 650 lbs., Queen 750 lbs.

2.6: When setting up the bed please make sure all electrical cables and wires are routed so they clear all parts and are not damaged during the operation of the bed.

If any cables or wires are damaged the bed should not be operated and should be disconnected from all power sources. Immediately contact your retailer for service.

2.7: The Tilt Function adjustable bed is designed for NON commercial, indoor use only.

2.8: Operating conditions.

1) Ambient temperature 50-105 degrees F.

2) Relative humidity non condensing less than 95%.

2.9: Never let children play or tamper with the motorized functions of the bed. Keep pets away from the bed when operating to prevent entrapment.

3: SET-UP

Please check the contents of the carton for completeness.

The carton contains the pre-assembled bed (1); a carton with 4 legs (2); a carton with the remote control (3), the power supply (4), and the mattress retainer bar.



Fig.3.1 Bed packed for transportation.

3.1: Open carton with the 4 legs and screw the legs into the threaded holes as shown.



3.2: Cut the plastic ties holding the power supply and . Insert 2-9V batteries (included) into power supply by lifting side clip, attaching batteries, and closing side clip securely. Set power supply and hand control aside.

3.3: Remove the Tilt Function adjustable bed from it's carton and place on it's legs. Locate the chrome mattress retainer bar at the foot of the bed. For transportation reasons the bar was installed upside down. Remove the secure pins from both ends and remove the bar from the plastic holders. Turn bar around and insert into the plastic holders. Snap the secure pins in place. Position the bed in the room as desired and double check to ensure that all cables and wiring are completely free of all moving parts.

3.4: Remove the hand control from its carton note 2 AAA batteries are included. Open the back cover on the hand control and insert the batteries as indicated.

3.5: Plug the power supply into a standard household wall socket. A small green light should appear to indicate that the power is on.

3.6: Synchronize hand control to the unit by pressing together: head up button, foot up button, and reset button on control box.

3.7: Enable your Bluetooth functionality following the instructions below.

How to activate Bluetooth

1. Press and hold HEAD UP & FOOT UP, then press RESET button on **control box**
2. Press and hold HEAD UP & FOOT UP, then press RESET button on bluetooth receiver

Scan below for APP

I.O.S.

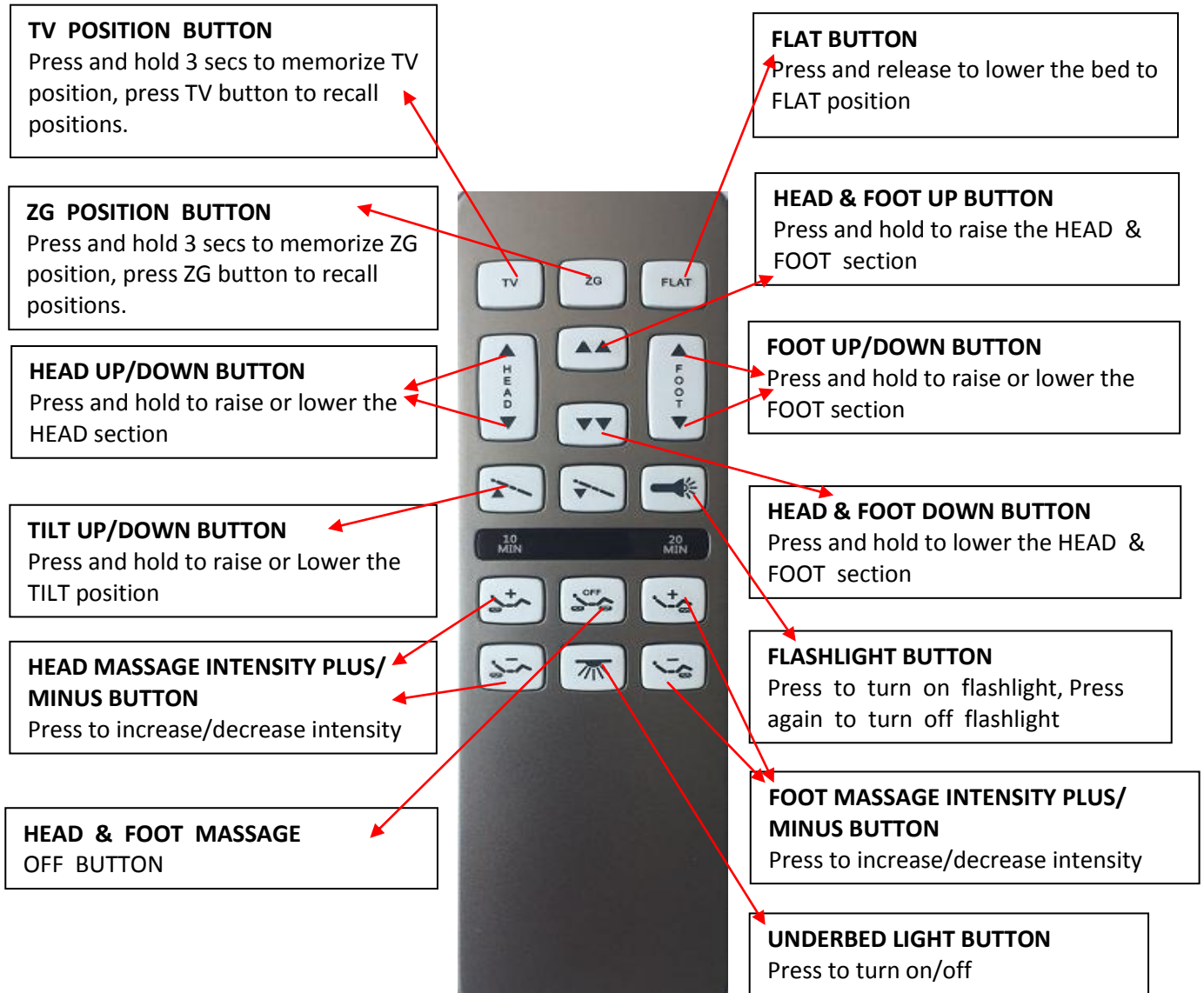


Android



4.operation

REMOTE control function



5: TROUBLE SHOOTING:

5.1: If the bed does not operate at all.

Double check to make sure the bed is plugged into an active household outlet. The green indicator light on the power supply box should be on. If the light is not on, then the bed is not receiving power. Double-check all connections and make sure the bed is plugged into a working power outlet.

5.2: A single function does not operate.

Double check all cable and wiring to ensure everything is firmly connected as shown in Fig. 5.

5.3: The hand control does not work.

Double check to make sure the protective plastic strip has been removed from the batteries as described in 3.4. If the hand control does not light up when any button is pressed, the batteries need replacing. Replace the batteries with 2 AAA. Open the battery compartment and replace batteries maintaining the polarity as indicated.

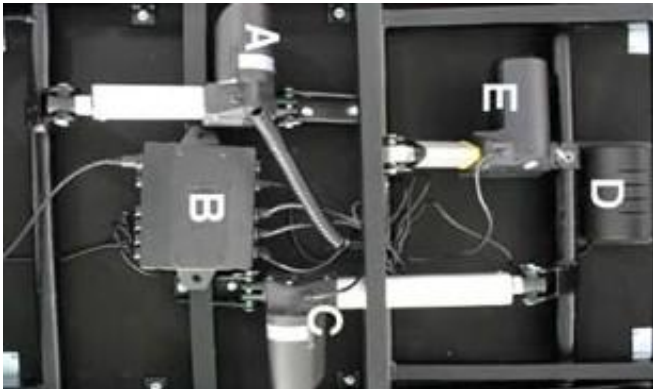


Fig.5.1 Electrical components

- (A) Foot rest motor
- (B) Control box
- (C) Back rest motor
- (D) Massage motor (head end, foot end not shown)
- (E) Tilt Motor

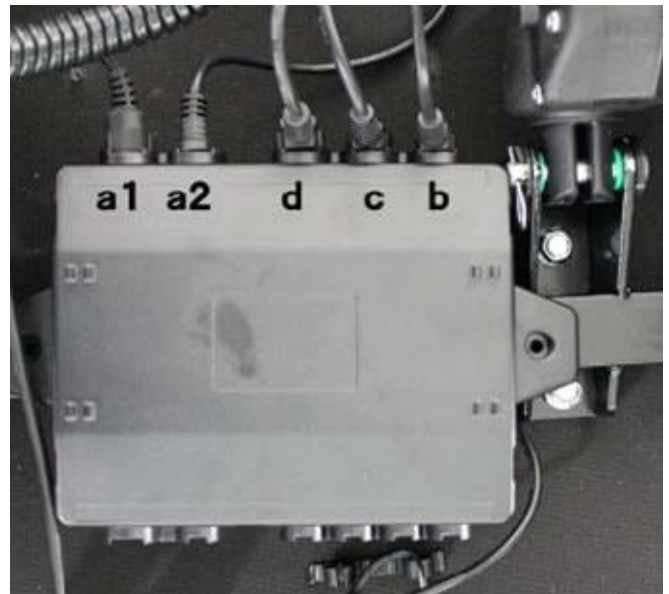


Fig.5.2 Control Box (B)

- (a1) cable connection massage motor foot end
- (a2) cable connection massage motor head end
- (b) Plug back rest motor
- (c) Plug foot rest motor
- (d) Plug bed lift motor (optional)

Please note that all cable connections must be secured with plastic clips to prevent the connections from going loose. For demonstration purposes, Fig. 5.2 shows the connection (a1) without and (a2) with the plastic clip.



The team from Ergo-Pedic would like to thank you for
your purchase of our Patent US 9642 757 B2 Tilt-3 Power
Adjustable Foundation.

M.B. & G. MARKETING
P.O. BOX 2787 INDIO, CA. 92202, U.S.A.
TOLL FREE SERVICE: 844-347-7322
WWW.ERGOPEDIC.NET