



# MALOUF BASE APP INSTRUCTIONS

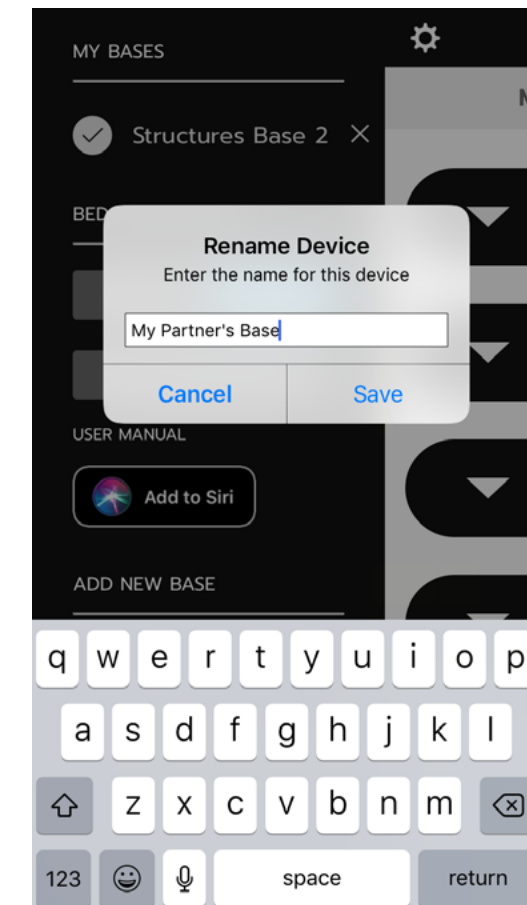
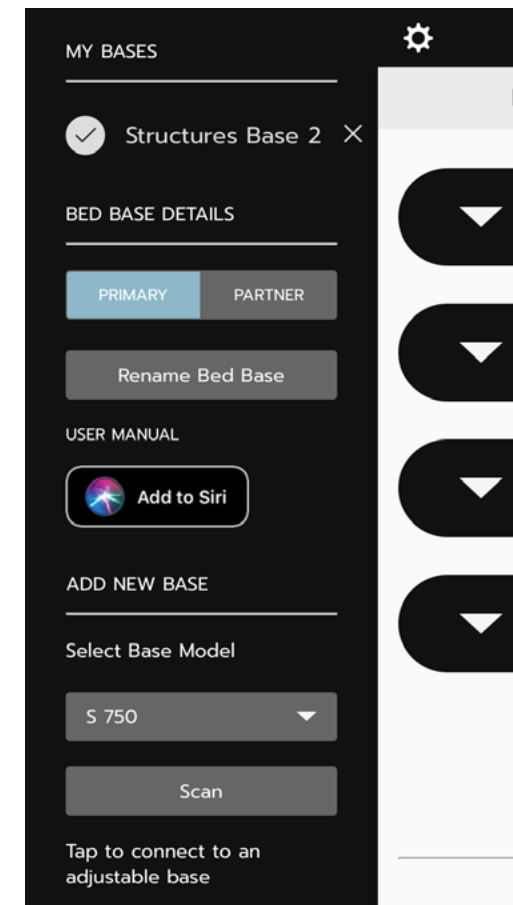
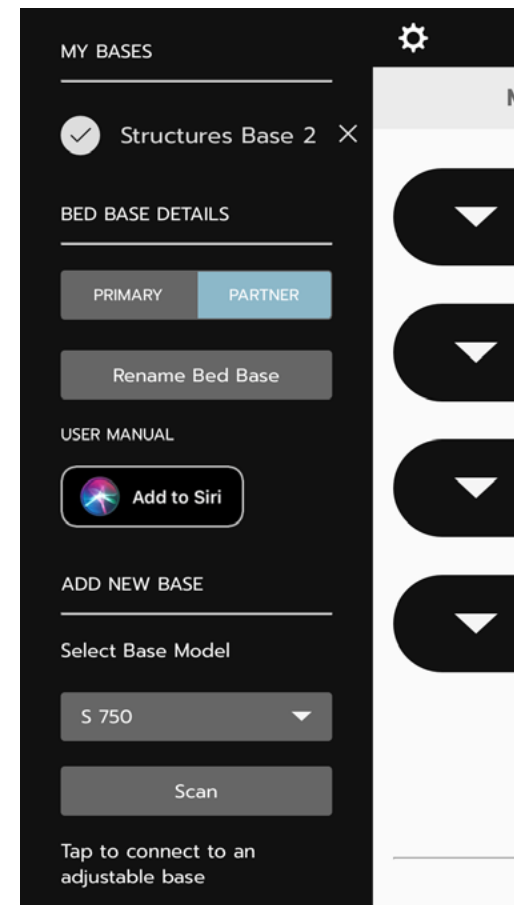
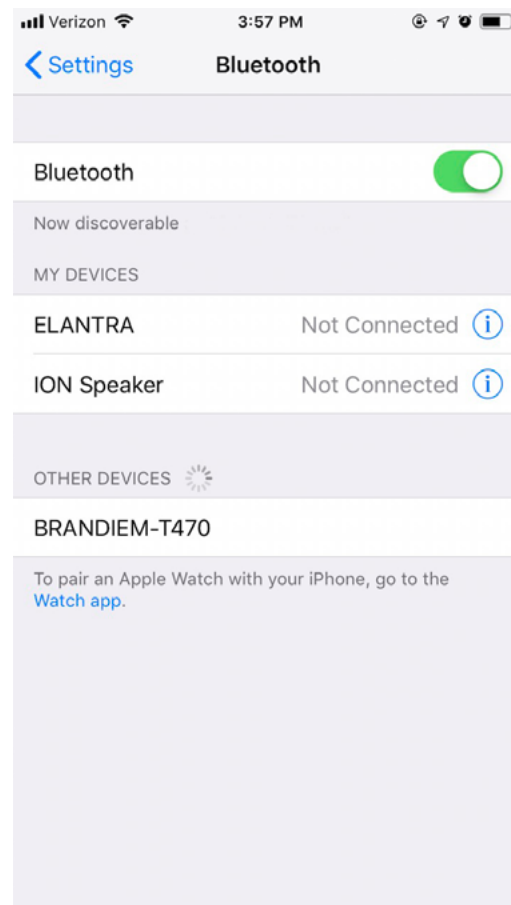
*Partner Control and Siri Shortcuts*



# PARTNER CONTROL

Android and iOS

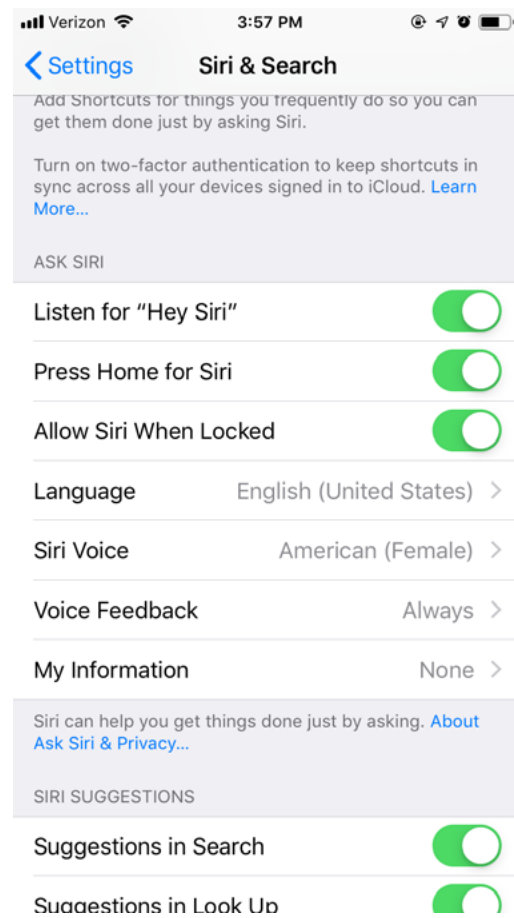
1. Enable Bluetooth® on your mobile device and open the Malouf Base app. If you need to download the app, visit the Google Play Store on your Android device or the App Store on your iOS device.
2. From the settings menu, select the base model (E450, M550, S750) under “Add New Base” and tap “Scan.” Then select the appropriate base under “My Bases.” Once connected, a check mark will appear next to the name of the base.
3. Make sure “Partner” is selected under “Bed Base Details.” If your partner’s base is set as “Primary,” select their base under “My Bases” and tap “Partner” under “Bed Base Details.” Then select “Ok” to override the previously set base.
4. Rename your partner’s base so it’s easier to switch between and control each base.
5. Tap the gear in the top-right corner to exit the settings menu. Then test the connection by pressing any button on the Malouf Base app.



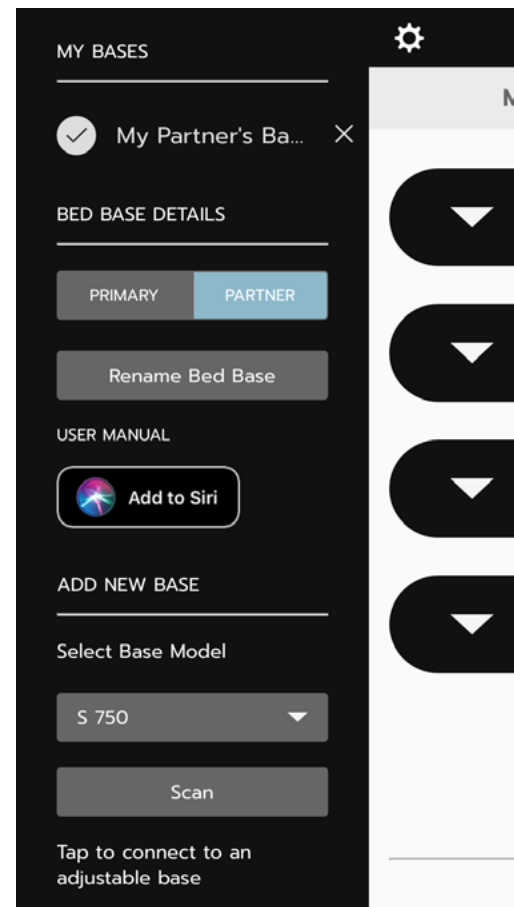
# SIRI SHORTCUTS


iOS 12+ users only

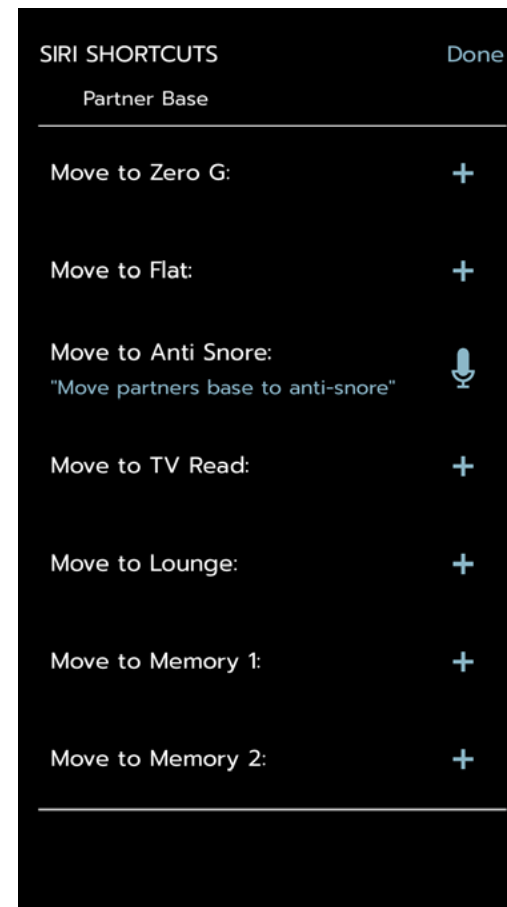
1. Enable Siri Shortcuts on your mobile device.



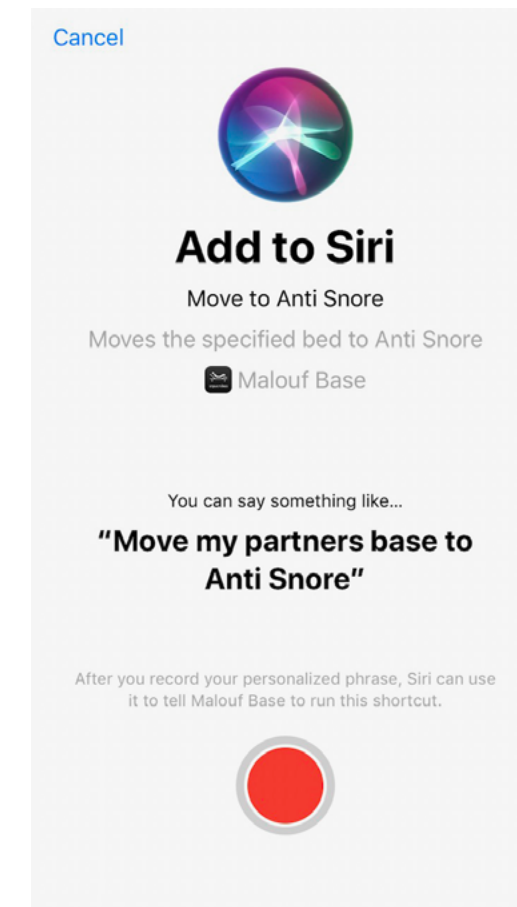
2. From the settings menu, select your partner's base under "My Bases." Then tap "Add to Siri."



3. Select + to assign a Siri Shortcut to a preset position (e.g. Zero Gravity, Anti-Snore, Flat). Tap  to edit an existing shortcut.



4. When you're ready, press the red button to record your customized shortcut. Then tap "Done" when finished.



5. Test your new shortcut by saying "Hey Siri" then your customized command.

Examples: "Hey Siri, move my partner's base to Anti-Snore."  
"Hey Siri, change position to TV mode."  
"Hey Siri, return my partner's base to flat position."