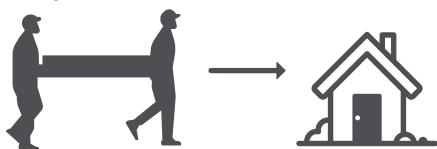


Delivery and Setup for O300T™ Adjustable Base

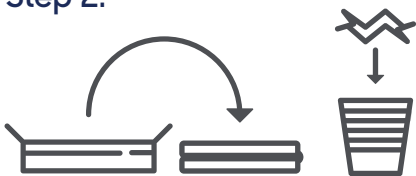


Step 1.



Ensure there is an open path to the room for setup. Carry the base into the home fully boxed using two (2) people.

Step 2.



Unbox the power base and remove any plastic.

Step 3.



Unfold the base.

Step 4.



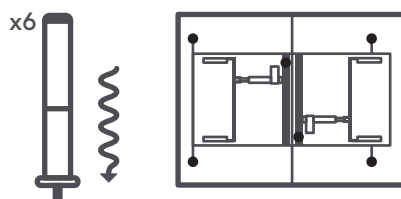
Remove all packaging and accessories from the undercarriage.

Step 5.



Be sure to locate the owner's manual and hand it directly to the customer.

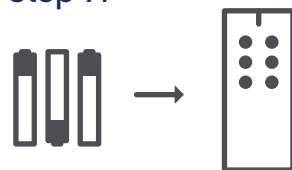
Step 6.



Attach the legs.

Note: x8 legs for king & California kin.

Step 7.



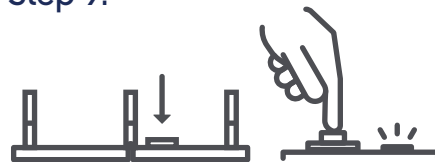
Install remote batteries so that you can pair the power base to the remote.

Step 8.



Extend the power cord and plug the power base in to pair it to the remote.

Step 9.



Hold down the learn button on the control box attached to the undercarriage of the power base until it illuminates. Once it is illuminated, press any button on the remote: the light on the control box will then blink indicating that the remote is paired.

The control box images below show where the learn button can be found on the control box of the power base.

Step 9. Cont.



O300T
Control Box

Note: To pair a split king repeat the step above with the second power base. For the bases to move together use the same remote with the second power base.

Step 10.



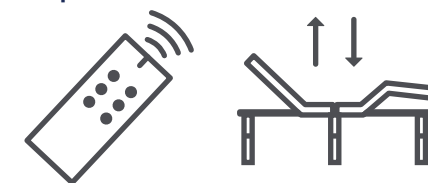
Unplug the power cord and extend away from the power base. Using two (2) people carefully lift and flip the power base into the upright position.

Step 11.



Install the retainer bar by inserting it into the holes at the foot of the base. No hardware required.

Step 12.



Plug the power base into a grounded outlet or as recommended a surge protector. Test the power base.

**For further assistance
please contact Retail Support:
1.800.951.3181**