

# OWNER'S MANUAL

Installation & Operation



# Table of Contents

Parts List.....	1
Electronics Quick Reference Guide.....	5
Installation Guide.....	9
Pairing.....	10
Remote Control Instructions.....	11
Troubleshooting.....	14
Warranty.....	16

# Parts List

**Models: HL-Q80-1, HL-K76-1**



**WIRED REMOTE**



**12" METAL LEG**



**RETAINER BAR**



**POWER CORD**



**POWER SUPPLY BOX**

## OPTIONAL EQUIPMENT (NOT INCLUDED)



**3PCS ADJUSTABLE LEGS**

# Parts List

**Models: HU-Q80**



**WIRED REMOTE**



**12" METAL LEG**



**RETAINER BAR**



**POWER CORD**



**POWER SUPPLY BOX**

## OPTIONAL EQUIPMENT (NOT INCLUDED)



**3PCS ADJUSTABLE LEGS**

# Parts List

**Models: HL-T80-2,HL-T84-2,HL-F75-2,HL-Q80-2,HL-K72-2,HL-K76-2,  
W2T-80,W2F-75,W2Q-80**



**WIRELESS REMOTE**



**12" METAL LEG**



**RETAINER BAR**



**POWER CORD**



**POWER SUPPLY BOX**

## OPTIONAL EQUIPMENT (NOT INCLUDED)



**3PCS ADJUSTABLE LEGS**

# Parts List

**Models: HL-T80-3,HL-T80-3T,HL-Q80-3, W3T-80, W3F-75, W3Q-80**



**WIRELESS REMOTE**



**12" METAL LEG**



**RETAINER BAR**



**POWER CORD**



**POWER SUPPLY BOX**

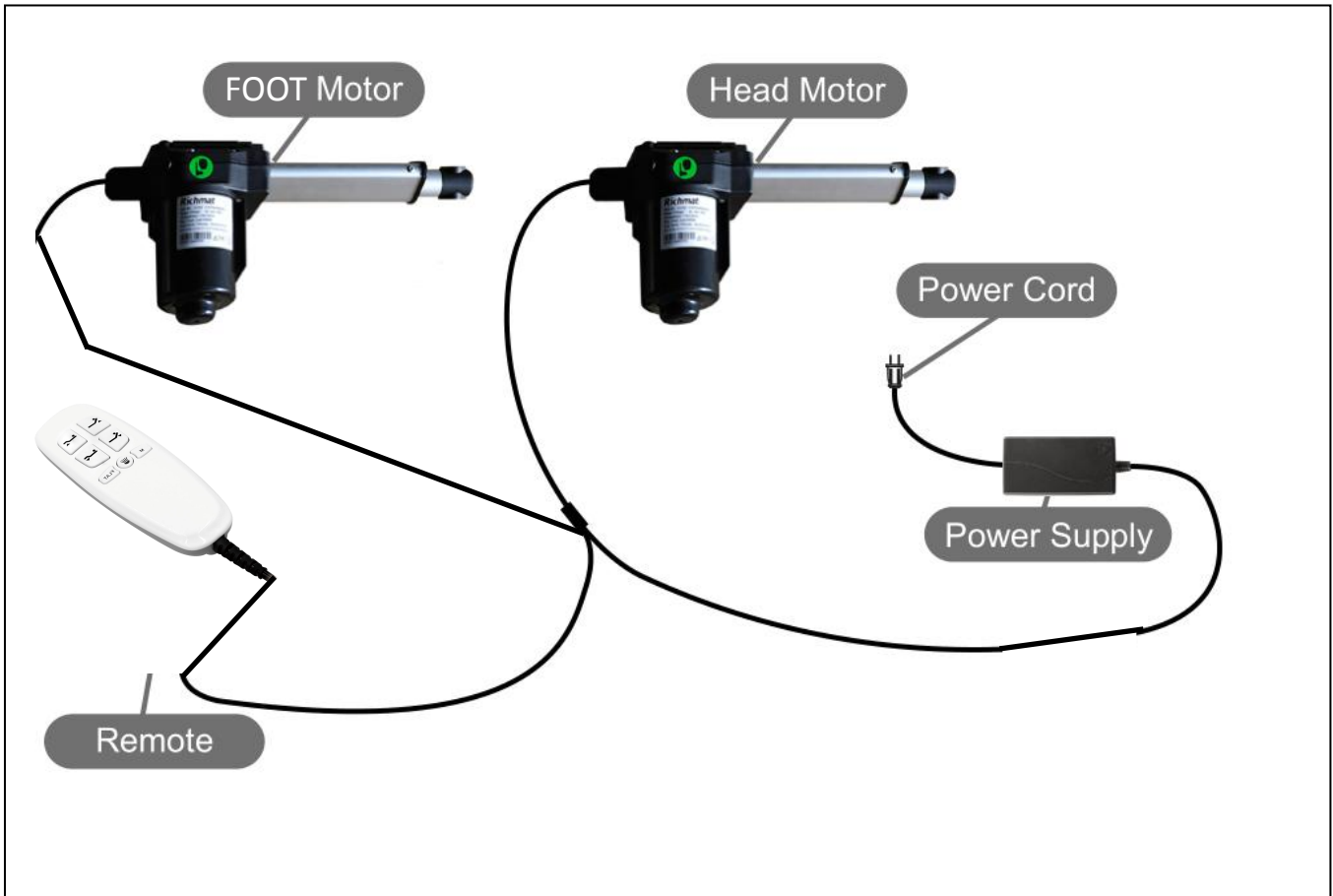
## OPTIONAL EQUIPMENT (NOT INCLUDED)



**3PCS ADJUSTABLE LEGS**

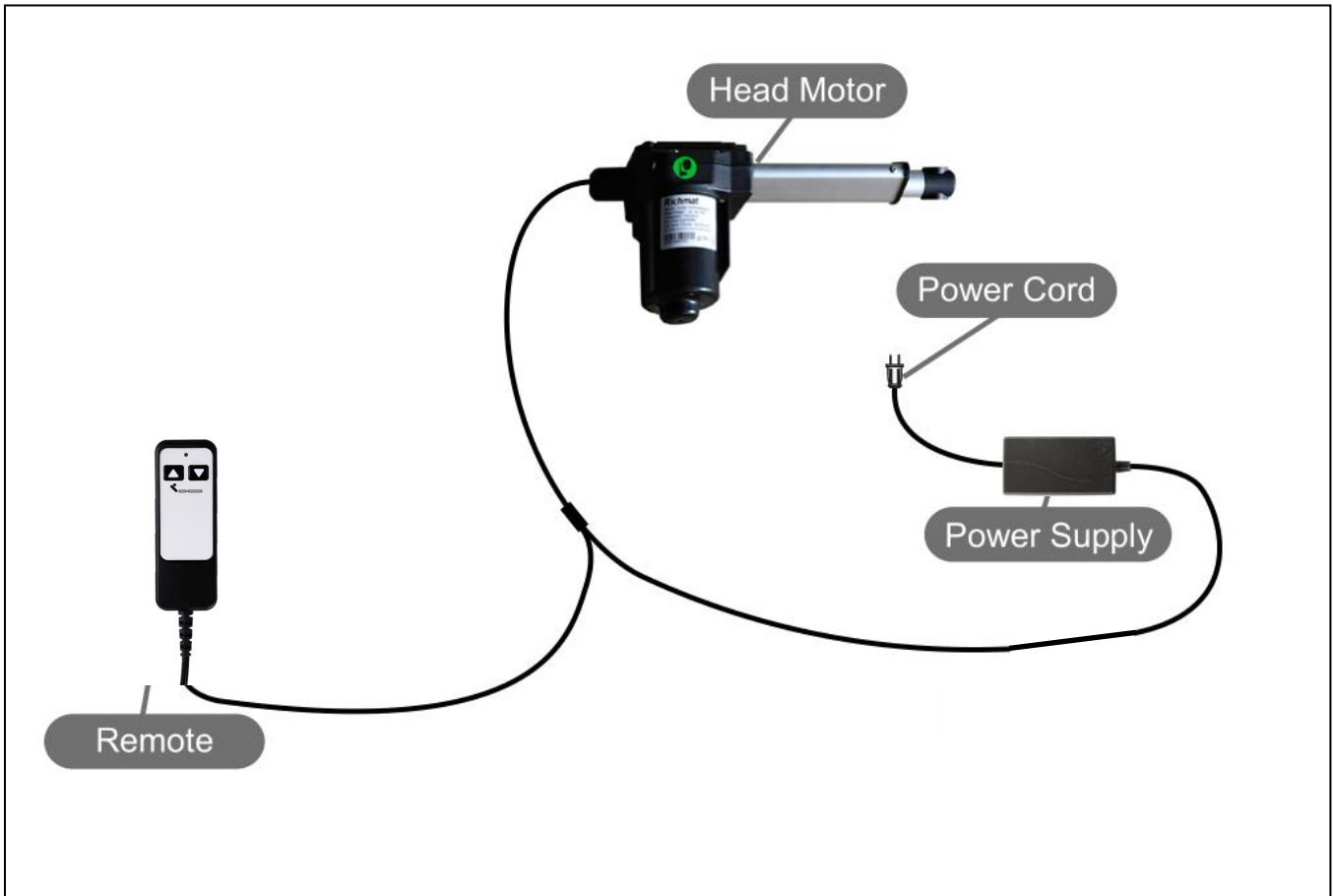
# Electronics Quick Reference Guide

**Models: HL-Q80-1, HL-K76-1**



# Electronics Quick Reference Guide

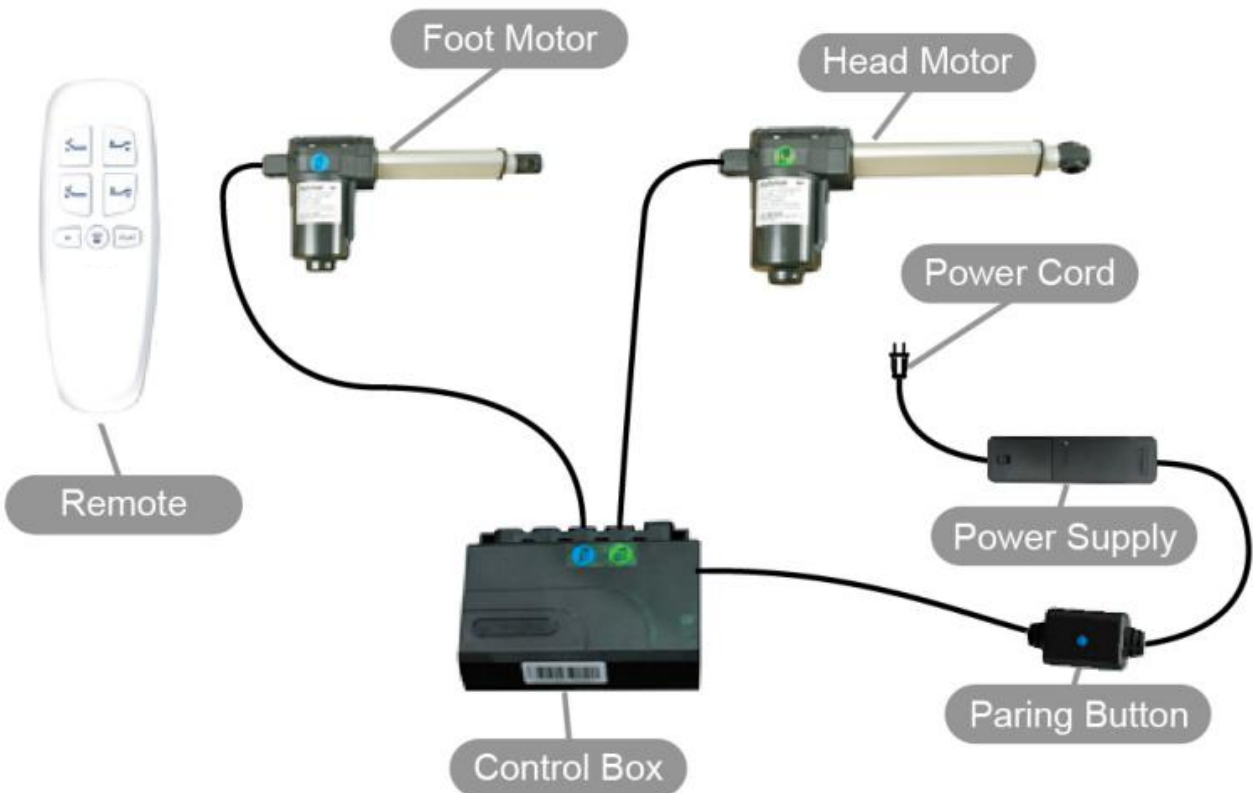
Models: HU-Q80





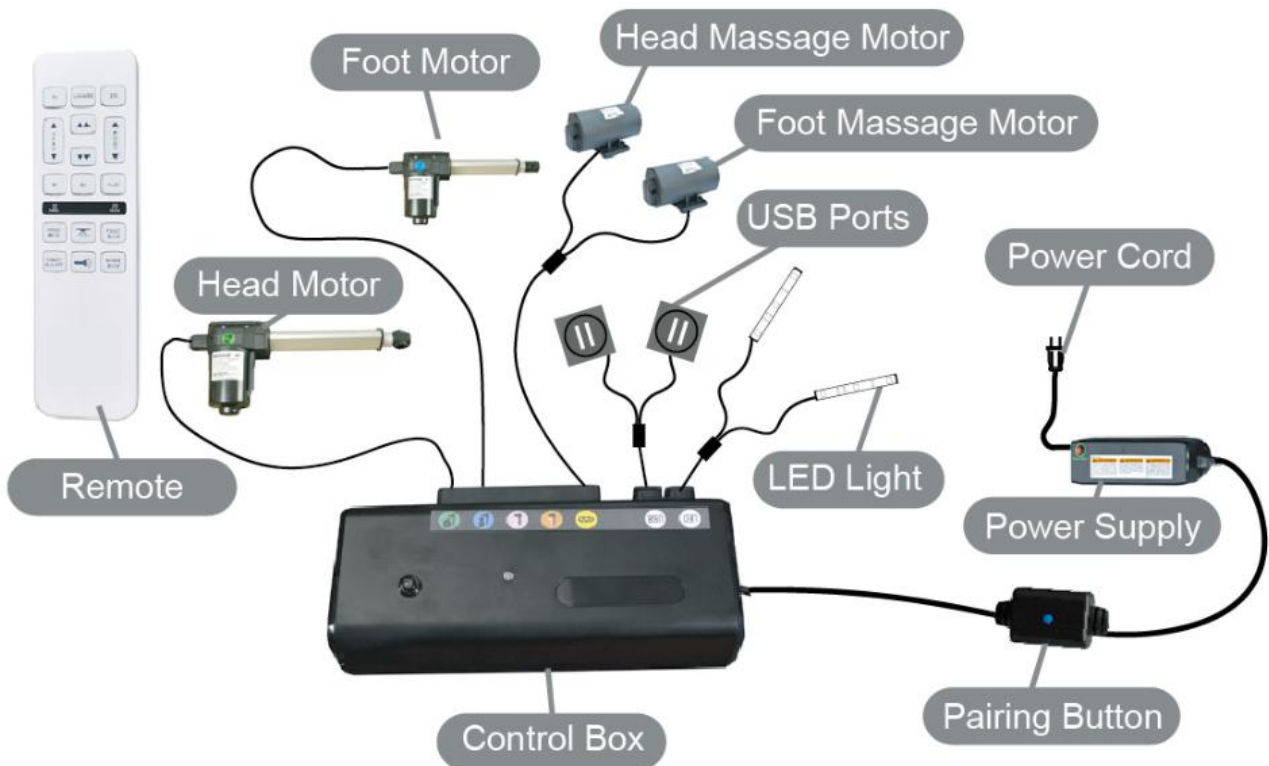
# Electronics Quick Reference Guide

Models: HL-T80-2,HL-T84-2,HL-F75-2,HL-Q80-2,HL-K72-2,HL-K76-2



# Electronics Quick Reference Guide

**Models: HL-T80-3,HL-Q80-3**



# Installation Guide

## NOTES



Two people are required to assemble this adjustable base.



Open the carton in the flat position, bottom facing up to avoid damage.

## STEP 1

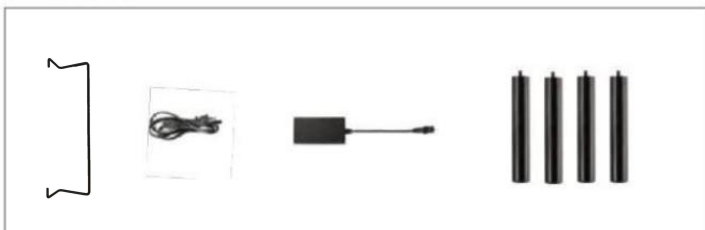
Open the carton box. Lay out the adjustable base flat on the ground. Open all the parts boxes and cut the zip ties as shown.

Take caution to avoid pinning fingers or any underside wires along the hinge.



## STEP 2

Open the accessories box and ensure all accessories are included (see page 1).



## STEP 3

To install the six (6) legs, thread the bolt of the leg into the frame and tighten by hand.



## STEP 4

Uncoil the input power cord (connected to the control box on the underside of the base) and plug it into the power supply box.



## STEP 5

With two(2) to four(4) people, flip over the base, insert the mattress bar as shown.



## STEP 6

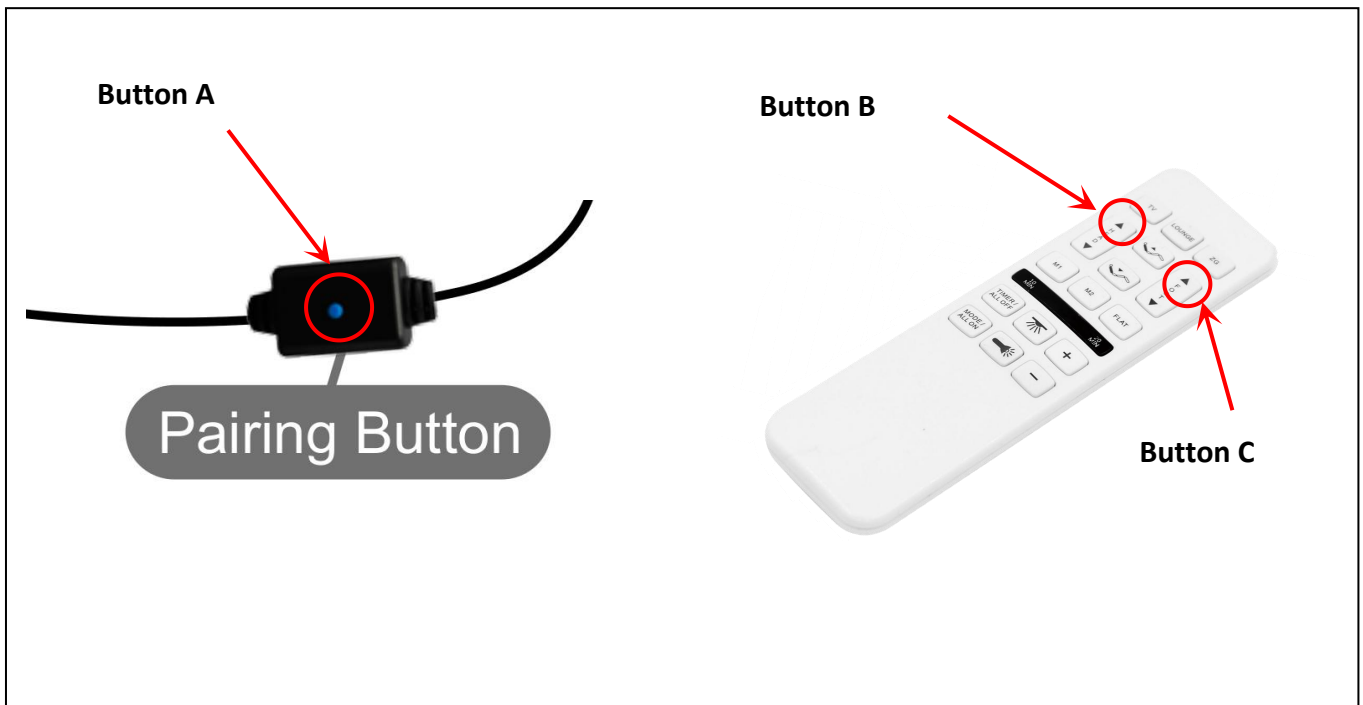
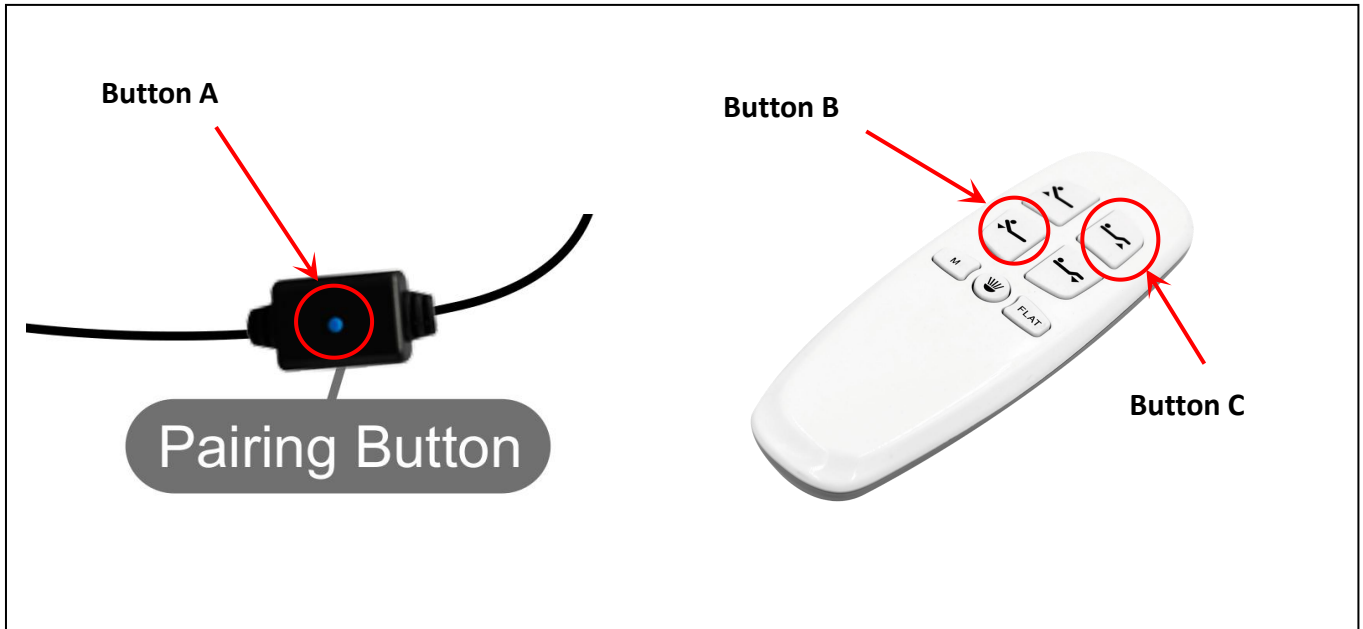
To complete assembly, plug the Power cord into the wall outlet. And use remote to test functionality.



# Pairing

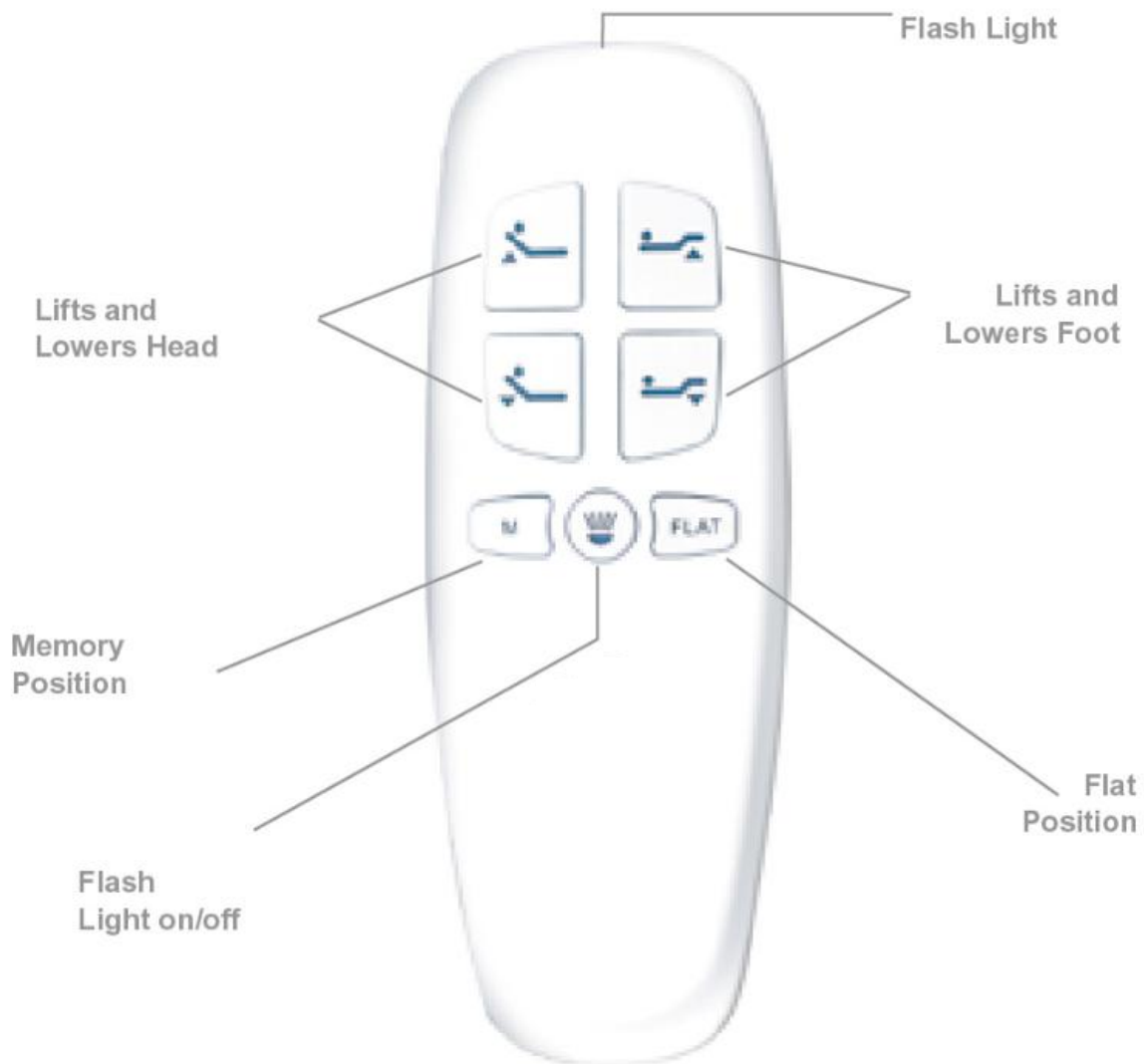
## NOTES:

The original remote that comes in the box is already paired to the bed. No further action is required. In the event that the remote is not paired with the bed, follow the steps as below. Also pairing is needed for wireless remote only.





**Pairing:** Press and hold button B & C as shown, press button A while you are holding B & C, release when you hear two beeps sound, which means pairing is done.


# Remote Control Instructions



## ADJUST

 **HEAD** The **HEAD** ▲▼ arrows lift and lower the head section of the foundation.

 **FOOT** The **FOOT** ▲▼ arrows lift and lower the foot section of the foundation.

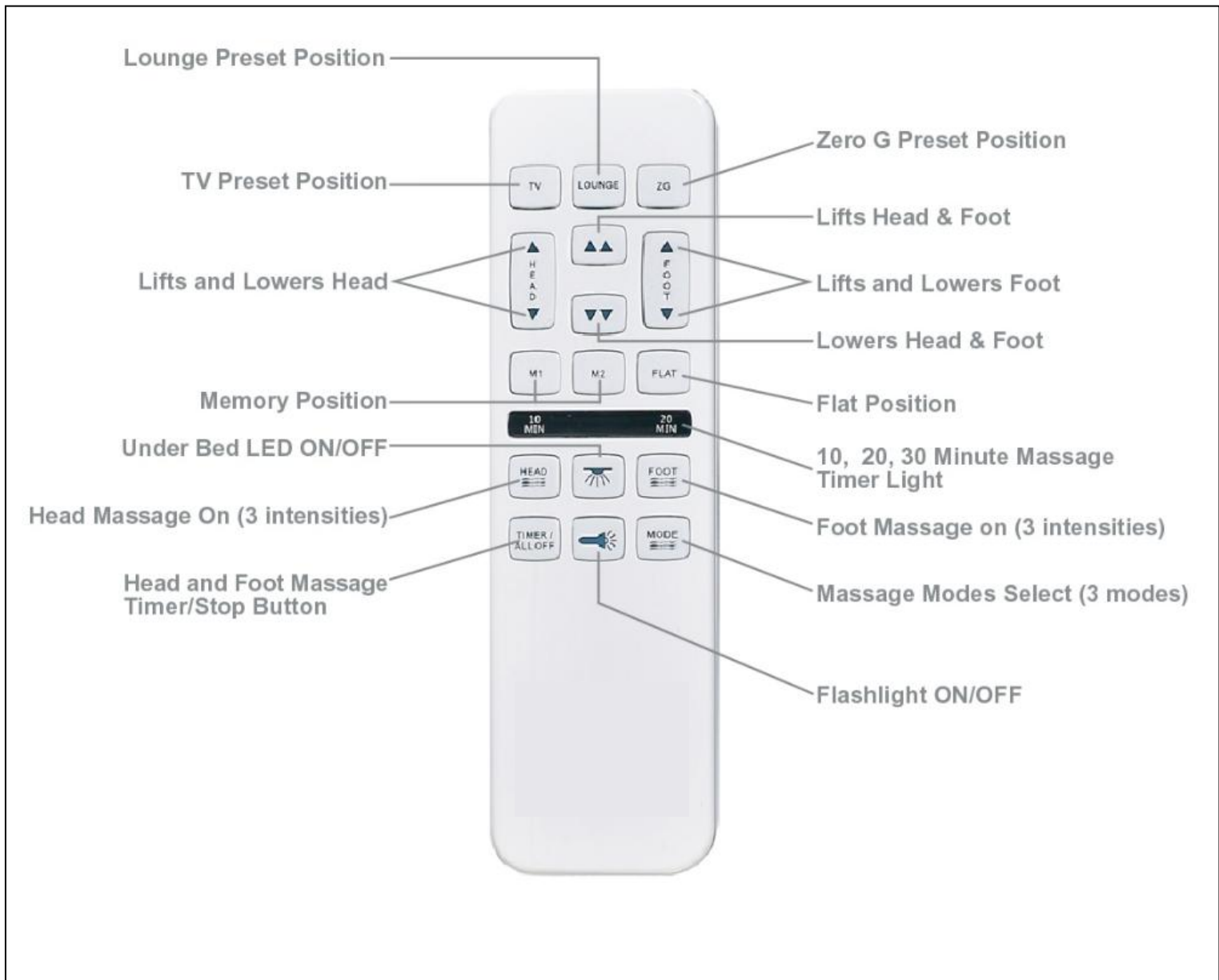
 One touch flash light on/off.

## ONE TOUCH BUTTON

 **FLAT** One touch **FLAT** preset position.

 **M** One touch memorized position.

# Remote Control Instructions



## ADJUST

- The **HEAD** ▲▼ arrows lift and lower the head section of the base.
- The **FOOT** ▲▼ arrows lift and lower the foot section of the base.
- The double ▲▲ arrows lift and lower the head & foot section of the base.
- Press and hold the button, flash light will be on.

## ONE TOUCH BUTTONS

- One touch **TV** preset position.
- One touch **LOUNGE** preset position.
- One touch **ZG** preset position.
- One touch **FLAT** preset position.
- One touch programmable preset position.
- One touch programmable preset position.
- One touch under bed LED light on/off.

## MESSAGE FEATURE

- The button will turn on the head massage. Cycle through 3 intensities.
  - The button will turn on the foot massage. Cycle through 3 intensities.
  - The button will change the massage modes. Cycle through 3 intensities.
  - The button will select a 10, 20 or 30 minute setting. Pressing a fourth time will turn off massage.
- The light on the top of the remote indicates a 10,20 or 30(backlit of 10&20 MIN on) minute timer setting.

# Remote Control Instructions

## SETTING PROGRAMMABLE POSITIONS



The wireless power bed has a programmable feature that allows you to save custom positions. Please read all the instructions below before setting your custom presets on the remote.

### STEP 1

Adjust the head and foot to your desired position.



### STEP 2

Press and hold the flat button  first, then press and hold memory button  for 5 seconds until the buttons' lights are flashing. The position is then saved.

### STEP 3

To adjust the saved position, repeat steps 1 and 2 and the new position will be saved.

# Troubleshooting

In the event that the power foundation fails to operate, assess the symptoms and possible solutions provided in the chart below.

SYMPTOMS	SOLUTIONS
Remote control illuminates and appears to be operable, but will not activate bed.	Verify that the power cord is plugged into a working, grounded electrical outlet. Test the outlet by plugging in another working appliance.
No features of the power foundation will activate.	<p>Program the remote control (see the Setting Programmable Positions and Pairing Remote section of this manual for programming procedures).</p> <p>Unplug the power cord, wait 30 seconds and plug back to reset electronic components.</p> <p>The surge protection device or the electrical outlet may be defective. Test the outlet by plugging in another working appliance.</p> <p>Verify that the connector on the wired remote control is securely attached to the control box.</p>
Wireless remote will not illuminate.	Replace the batteries in the wireless remote.
Head or foot section will elevate, but will not return to the horizontal (flat) position.	<p>Bed mechanism may be obstructed. Elevate bed and check for obstruction. Remove obstruction.</p> <p>Head section may be too close to the wall.</p> <p>Headboard may be too close to the edge of the mattress. Verify that there is enough distance between the headboard brackets and mattress. Adjust if required.</p>



# Troubleshooting

In the event that the power foundation fails to operate, assess the symptoms and possible solutions provided in the chart below.

SYMPTOMS	SOLUTIONS
<p>Head &amp; Foot lift function has minor interference during operation.</p>	<p>Check batteries in wireless remote control, replace with two (2) new AAA batteries if necessary.</p> <p>Make sure that you are following the duty cycle of the motors (do not operate more than two minutes over a 20-minute period, or approximately 10% duty cycle).</p> <p>Press the lift buttons squarely and accurately.</p> <p>Wireless remote control may be experiencing common Radio Frequency Interference from other radio transmitting devices. Wait several seconds, and then try pressing appropriate button again. See <b>FCC Compliance Statement</b> on page 1 of this guide.</p>
<p>Excessive massage motor noise.</p>	<p>If the bed is located on hard surface flooring, place carpet pieces or rubber pieces (not included) under each leg.</p> <p>Using the wireless remote control, elevate the head, foot or neck section a short distance to realign the lift/lower mechanisms with the bed support platform.</p> <p>Verify that your Nisco Power Foundation is not positioned against a wall, nightstand, or other object that may cause the vibration or noise.</p> <p>If the Nisco Power Foundation is installed over a bed frame, verify that the massage motors are not causing the bed frame (or bed frame components) to vibrate.</p> <p>Verify that the headboard attachment hardware is properly tightened (if used).</p>
<p>A clicking noise is heard under the bed when raising or lowering.</p>	<p>This is normal. The lift motor relays "click" when they are engaged. No action is required.</p>
<p>Massage motor overheats or stops.</p>	<p>If the vibration motor overheats, the thermal protection will turn the motor off. Wait 30 minutes, turn the massage back on. If it does not come on, turn it off and report the situation to customer service.</p>

# Warranty