



# SBKD3

PLEASE READ AND KEEP FOR FUTURE REFERENCE.  
THIS MANUAL CONTAINS IMPORTANT SAFETY INFORMATION.

SERIAL NUMBER:

# TABLE OF CONTENTS

SAFETY INFORMATION .....	3-4
INTRODUCTION .....	5
SETUP GUIDE .....	6-8
CONNECTING STRAPS .....	9
SYNCHRONIZATION CABLE .....	10
VELCRO SECURING STRAPS .....	11
WARRANTY .....	12
TROUBLESHOOTING .....	13-14
REFERENCE GUIDE .....	15
FAQ .....	16

# SAFETY INFORMATION

PLEASE READ ALL SAFETY INFORMATION AND INSTRUCTIONS CAREFULLY BEFORE ASSEMBLY AND USE. VIOLATING ANY SAFETY INFORMATION WILL VOID THE WARRANTY AND MAY RESULT IN INJURY OR DAMAGE.

## SAFETY INFORMATION

Only use the adjustable base for its intended use as described in this manual. Follow the guidelines below:

- \* Avoid fingers in pinch-points.
- \* Two adults are strongly recommended for moving and assembly.
- \* Plug the adjustable base into a suitable wall outlet or surge protector (not included).
- \* If the plug does not fit your outlet, contact a qualified electrician to install a suitable outlet. Unauthorized modification or failure to use a proper power source or surge protector will void the electrical portion of your warranty.
- \* Keep power cords away from heated surfaces.
- \* To safely disconnect, ensure the adjustable base is in a flat position with all motors off, and unplug from power source.
- \* Unplug the adjustable base from the electrical outlet before cleaning or servicing.
- \* Stop using the adjustable base and contact Customer Service if the adjustable base is not working properly, has been exposed to water, or the power cord is damaged.
- \* Do not place the adjustable base or any of its components near or in water.
- \* Do not drop or insert objects into any opening. Never operate the adjustable base when there is an obstruction between the moving parts of the adjustable base and the metal frame.
- \* Replacing parts on the adjustable base is allowed to be done by the consumer, however, tampering with internal components will void the warranty.
- \* Do not use accessories/attachments that are not recommended by the manufacturer.
- \* Exceeding this weight limit of 750 pounds could damage the adjustable base and/or cause injury and will void the warranty.

- \* Do not operate the adjustable base when a person or animal is underneath the adjustable base.
- \* Mattresses may move or shift on adjustable bases – use caution.
- \* If the adjustable legs are utilized, all legs must be resting evenly on the floor and installed at all 6 pre-drilled insertion points. The legs must never exceed 4 segments; anything taller is considered unsafe and may cause damage, injury and void the warranty.

## TIPPING WARNING

Placing weight at the edge of the adjustable base may tip the adjustable base.

## IN-HOME USE

The adjustable base is designed solely for in-home use. This adjustable base was not designed as a hospital bed and is not designed to meet hospital standards. Do not use this adjustable base with tent-type oxygen therapy equipment or near explosive gases.

## OPERATION AND SUPERVISION

Close supervision is required when the adjustable base is used by or near children, animals, convalescent or disabled persons. Immediately dispose of all packing materials as they may pose a risk to small children and pets. To avoid injury, do not allow children or small pets to play on or under the adjustable base.

## PACEMAKERS

As with any product that produces a vibrating motion, it is possible that some pacemakers may interpret this motion as a false sense of movement and/or exercise. This may or may not affect your pacemaker. If you have any concerns, please consult your physician.

# SAFETY INFORMATION

## WEIGHT LIMITS

The weight limit of the adjustable base is 750 pounds evenly distributed across the surface. The weight limit includes the weight of the mattress and users. Exceeding this weight limit could damage the adjustable base and/or cause injury and will void the warranty. This product is not designed to support or lift the total maximum weight limit by the head or the foot section only. Consumers should not enter or exit the adjustable base with any portion of the adjustable base in the raised position; always return the adjustable base to a flat position prior to use. If the weight limit is exceeded on the head or foot mechanism, the master control box will stop all functions. Exceeding the recommended weight limit restrictions could damage the adjustable base and void the warranty.

## OPERATING NOISES

The massage function emits a noticeable tone during operation. As the massage intensity level is increased, the tone will intensify. The noise will be less audible on a carpeted floor and more noticeable on a hard floor surface.

During typical operation, the wheels, which allow the adjustable base to articulate, will make contact with the steel platform supports of the adjustable base, creating a contact noise. When entering, exiting, or shifting weight on the adjustable base, this contact noise may be audible as the wheels make contact with the steel platform supports of the adjustable base. This is normal. Depending on the incline of the adjustable base, the noise levels can also potentially increase.

## ZERO CLEARANCE BEDFRAME REQUIREMENTS

If the legs on the adjustable base are not used, it is the consumer's responsibility to:

- \* Ensure the surface or bedframe paired with the adjustable base can withstand and support the combined weight of the mattress, users and adjustable base in a zero clearance setup.
- \* Ensure the adjustable base will not slide, shift or fall off the surface or bedframe.
- \* Ensure the adjustable base is level and supported on all 4 corners.
- \* Ensure the power cord and wires are not pinched or strained.
- \* The consumer may need to contact the manufacturer of any furniture paired with the adjustable base to verify if the zero clearance option is safe.

## FCC COMPLIANCE

This device complies with part 15 of the FCC Rules. Operation is subject to the following two conditions: (1) This device may not cause harmful interference and (2) this device must accept any interference received, including interference that may cause undesired operation.

To comply with the FCC RF exposure compliance requirements, no change to the antenna or the device is permitted. Any change to the antenna or the device could result in the device exceeding the RF exposure requirements and void user's authority to operate the device.

Radio Frequency: 2.4 GHz

# INTRODUCTION

## FEATURES

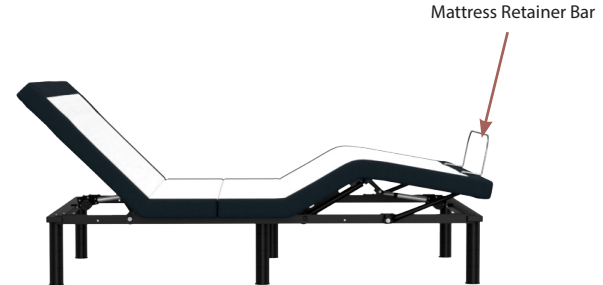
- \* Wireless Remote
  - \* Head up/down
  - \* Foot up/down
  - \* Flat Position Preset
  - \* Zero Gravity Preset
  - \* 3 Memory Buttons
- \* Mattress Retainer Bar
- \* Emergency Battery Strip

## TWIN XL/CKS SIZES ONLY

- \* Connecting Straps: prevents two adjustable bases from drifting apart if used without a bedframe.
- \* Synchronization Cable: to synchronize two adjustable bases in movement and features.
- \* Velcro Securing Straps: for zero clearance applications to secure the adjustable base to a bedframe slat system.

## CAPABILITIES

- \* Zero Clearance: designed to sit on top of a flat surface or compatible bed frame, without the use of legs.
- \* Weight limit: 750 lbs. including the mattress and users.
- \* Adjustable bases can be used:
  - \* Within a bedframe with or without slats
  - \* On top of a platform bedframe
  - \* As a standalone bed



# SETUP GUIDE

1

## OPEN AND UNPACK

Lay the box flat, open the box and unpack the list of components.  
No tools are required for assembly.

### COMPONENTS

- (1) Remote
- (3) AAA Batteries
- (6) Adjustable Legs
- (1) Power Cord
  - (1) AC/DC Power Adapter
  - (1) Power Cord
- (1) Emergency Battery Strip

- (1) Mattress Retainer Bar

### TWIN XL/CKS SIZES ONLY

- (1) Synchronization Cord
- (1) Connecting Straps
- (4) Velcro Securing Straps



Mattress Retainer Bar



Synchronization Cable



Velcro Securing Straps



Connecting Strap



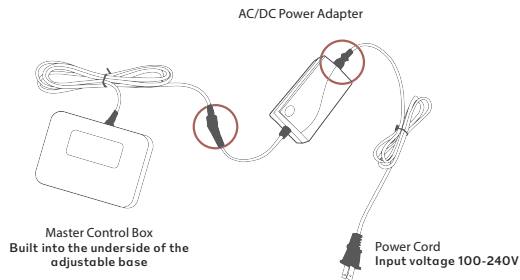
Emergency Battery Strip

2

## POWER CORD ASSEMBLY

Locate the control box built into the underside of the adjustable base. Connect the control box power cord, the AC/DC Power Adapter, and the Power Cord.

Store the Emergency Battery Strip in a safe location in case of a power outage; two 9-Volt batteries are required for operation and are not included.



# SETUP GUIDE

## 3 ZERO CLEARANCE

Designed to sit on top of a flat surface or compatible bedframe, without the use of legs. Legs are not required.

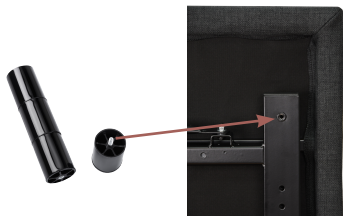
SEE ZERO CLEARANCE SAFETY INFORMATION PAGE.

or

## LEGS

Select the desired leg height. Screw the legs into all 6 designated leg holes.

SEE THE CONNECTING STRAPS PAGE



## ADJUSTABLE BASE HEIGHT OPTIONS

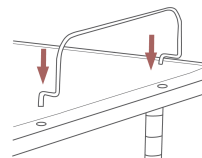
ZERO CLEARANCE	1 SEGMENT	2 SEGMENTS	3 SEGMENTS	4 SEGMENTS
				
3" Overall Height	6" Overall Height	9" Overall Height	12" Overall Height	15" Overall Height

## 4 PLACEMENT

Return the adjustable base to an upright and secure location, then plug in the power cord to an outlet.

MATTRESS HEIGHT REQUIREMENTS: 8" MINIMUM AND 14" MAXIMUM.

## 5 INSTALL THE MATTRESS RETAINER BAR



## 6 ADD 3 AAA BATTERIES (INCLUDED) TO THE REMOTE.

The remote control is pre-programmed to work with the adjustable base. If you have more than one adjustable base, each remote control and adjustable base set will work separately.

# REMOTE



Head: Up/Down



Foot: Up/Down

FLAT

Flat Preset

ZERO G

Zero Gravity Preset

MI

Memory Button 1

MII

Memory Button 2

MIII

Memory Button 3

## MEMORY BUTTONS

To program a memory button:  
move the adjustable base into  
a desired position, then hold  
the memory button down for  
5 seconds.



The remote control is pre-programmed to work with the adjustable base. If you have more than one adjustable base, each remote control and adjustable base set will work separately.



# CONNECTING STRAPS

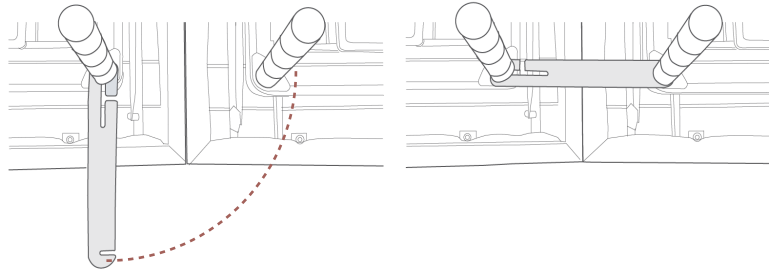
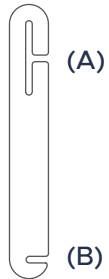
OPTIONAL FOR SPLIT KING OR SPLIT CAL KING ADJUSTABLE BASE SETS

The Connecting Straps will join two adjustable bases together to prevent drifting apart if they are not used within a bedframe.

**1** With the adjustable bases in their desired location, slightly loosen both legs to allow the strap to fit on the leg bolt, between the leg and frame.

**2** Slide side (A) of the Connecting Strap onto the leg bolt. Swing the strap and connect side (B) to the leg bolt. Secure the strap by shifting to the left.

**3** Re-tighten legs. Do not over-tighten. Use the remaining strap and repeat on other end of the adjustable base.

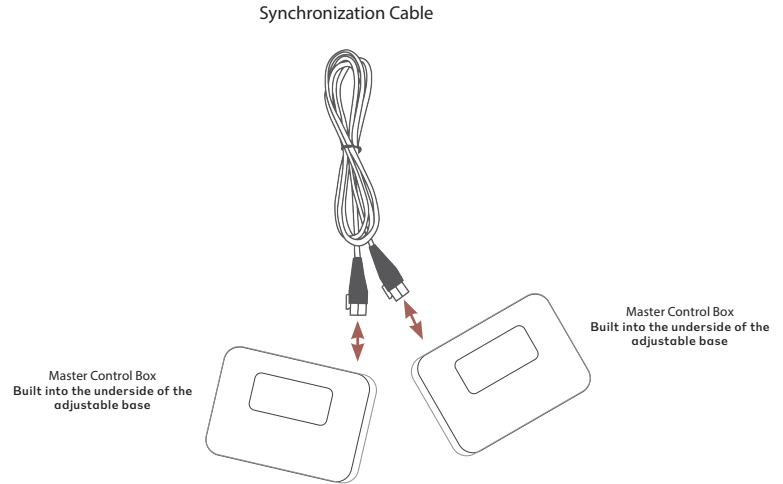


# SYNCHRONIZATION CABLE

OPTIONAL FOR SPLIT KING OR SPLIT CAL KING ADJUSTABLE BASE SETS

The synchronization cable will link two adjustable bases in movement and features.

- 1 Unplug the adjustable bases from the power outlets.
- 2 Connect the Synchronization Cable to the Master Control Box on each adjustable base. Only one synchronization cable is required.
- 3 Plug the adjustable bases back into the power outlet.
- 4 Check to ensure all cords are securely attached. Both remotes will now operate both adjustable bases simultaneously.



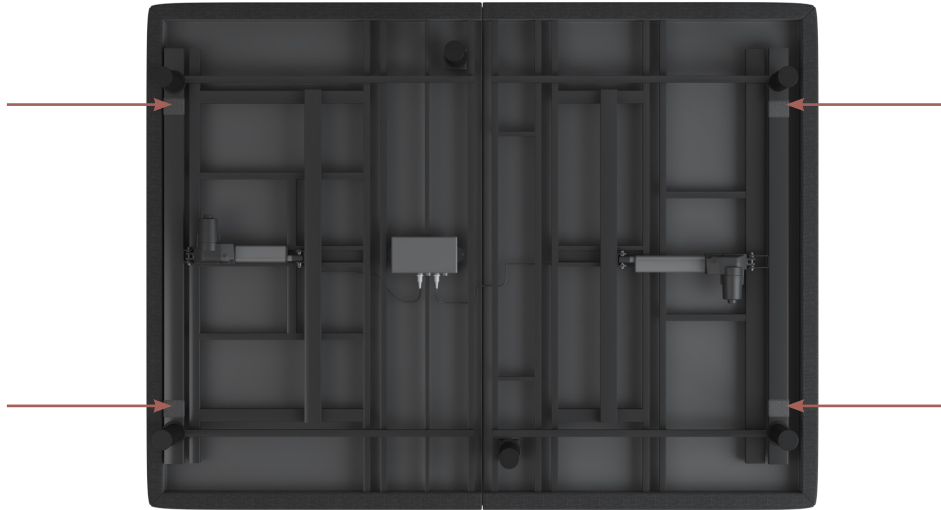
# VELCRO SECURING STRAPS

OPTIONAL FOR SPLIT KING OR SPLIT CAL KING ADJUSTABLE BASE SETS

The Velcro Securing Straps are for zero clearance applications to secure the adjustable base to a bedframe slat system.

1

Secure the adjustable base to the slat system by placing two Velcro Securing Straps at the head and two at the foot.



# 10-YEAR LIMITED WARRANTY

## FULL 1-YEAR WARRANTY

The Adjustable Base is warranted against defects in materials or workmanship for a period of one year from the date of purchase to the original purchaser. During the first year, manufacturer will repair or replace any defective part at no cost to the original purchaser. This includes all authorized labor and shipping costs incurred with the repair or replacement of any parts found to be defective.

## 2-YEAR LIFT MOTOR WARRANTY

The Adjustable Base has a two-year, full replacement warranty on the lift motors. This includes labor and shipping, should the motor(s) fail during the first two years of this warranty from the original purchase date.

## 5-YEAR WARRANTY

Year 2 through year 5, from the original purchase date, manufacturer will repair or replace any defective part at no cost to the original purchaser. The part must be returned within fourteen (14) days of receipt of the replacement part(s) or purchaser may be subject to charges for said part(s) to include, but not limited to, freight charges. Liability of manufacturer is limited to the replacement of the defective part or parts ONLY, with purchaser responsible for all service, installation and transportation costs of said part(s).

## 10-YEAR LIMITED WARRANTY

Year 6 through year 10 from the original purchase date, manufacturer will replace, per the terms and conditions set forth in this paragraph, any Adjustable Base part found to be defective. Any replacement part will be prorated at the discretion of South Bay International. This warranty applies only to replacement part(s). Purchaser may be subject to charges for said part(s) to include, but not limited to, freight charges. Liability of manufacturer shall be limited to the replacement of the defective part(s) only, with purchaser responsible for all service, installation and freight costs of said part(s).

## ADDITIONAL TERMS AND CONDITIONS

Warranty does not include reimbursement for inconvenience, removal, installation, setup, loss of use, shipping, or any other costs or expenses not expressly covered in this warranty.

## THIS WARRANTY DOES NOT APPLY:

- \* To damage resulting from misuse or abuse caused by the purchaser.
- \* To damage caused by the repairs or parts replacement by an authorized person.
- \* If the Adjustable Base has been mishandled subject to physical abuse or an improper power supply, or otherwise operated in a manner inconsistent with procedures outlined in the owner manual and warranty.
- \* To damage to mattresses, bedding, cables, electrical cords, or accessories supplied by dealers.
- \* To modification of the Adjustable Base without prior written consent by manufacturer.
- \* To costs for unauthorized service calls for the purpose of educating the consumer about the Adjustable Base or locating properly functioning power outlets.
- \* If the weight limits are exceeded.
- \* If used in any environment or commercial setting for which it was not intended. Some states do not allow the exclusion of incidental or consequential damages; therefore the above limitation or exclusion may not apply. This warranty gives the purchaser specific legal rights. The purchaser may have other rights, which may vary from state to state. This warranty is valid in the 48 contiguous states.

## WORKING WEIGHT LIMITS

Although your Adjustable Base has been rigorously tested within the recommended limits in this publication, to maintain the highest quality standards, exceeding the weight limits may void your warranty. The weight limit is 750 lbs. evenly distributed across the Adjustable Base including the combined weight of mattress and users.

CUSTOMER SERVICE 1-877-622-6550 FROM 7:30AM TO 5:00PM PST MONDAY-FRIDAY

# TROUBLESHOOTING

## IF ONE OR MORE FUNCTIONS ON THE ADJUSTABLE BASE HAVE STOPPED OPERATING

- \* Check under the adjustable base to verify that the wired connections are secure and that there are no cords or bedding obstructing the movement of the adjustable base.
- \* Check if the power cord is assembled properly and all the connections are secure.
- \* Check if the green LED on the AC/DC power adapter is illuminated.

## IF THE LIGHTS ON YOUR REMOTE CONTROL NO LONGER ILLUMINATE AND WILL NOT OPERATE YOUR ADJUSTABLE BASE

- \* Make sure the batteries are installed correctly.
- \* Install three new AAA batteries in the remote control.

## IF THE REMOTE CONTROL BUTTONS ILLUMINATE BUT ADJUSTABLE BASE WILL NOT OPERATE

- \* Unplug the adjustable base for 5 minutes to reset the electronic components.
- \* Plug the adjustable base into a different electrical outlet, or test the current outlet with another working appliance (a grounded, electrical surge protector is recommended).
- \* If the steps above do not fix the issue, you can reset your remote frequency by following the REMOTE FREQUENCY RE-PAIRING in the troubleshooting section.

## IF YOUR PRESET POSITION IS NOT WORKING PROPERLY

- \* Reset your remote preset positions by holding down the zero gravity and flat position button for 7 seconds; your remote will blink upon successful factory reset.

## IF THE HEAD OR FOOT MECHANISMS WILL ELEVATE BUT WILL NOT RETURN TO THE FLAT POSITION

- \* Check the undercarriage for obstructions. Remove any obstructions away from the head and foot mechanisms and return the adjustable base to its flat position.

## REMOTE FREQUENCY RE-PAIRING

The remote is pre-programmed to the adjustable base, however if the remote is unresponsive, follow these steps:

- \* Check the batteries; replace if needed.
- \* If the remote illuminates: Unplug the power cord from the outlet.
- \* Wait 5 seconds plug it back into the outlet.
- \* Within 10 seconds of plugging the power cord into the outlet: Press and hold the PAIR button on the back of the remote.
- \* The PAIR button will illuminate blue and start flashing. Release the PAIR button.
- \* Once the remote stops flashing the remote is paired to the adjustable base.

If the PAIR button continues to flash for more than a 3 seconds please contact Customer Service for further troubleshooting.

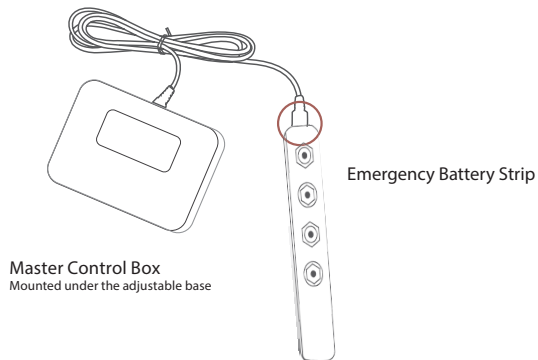
# TROUBLESHOOTING

## POWER OUTAGE – EMERGENCY BATTERY STRIP

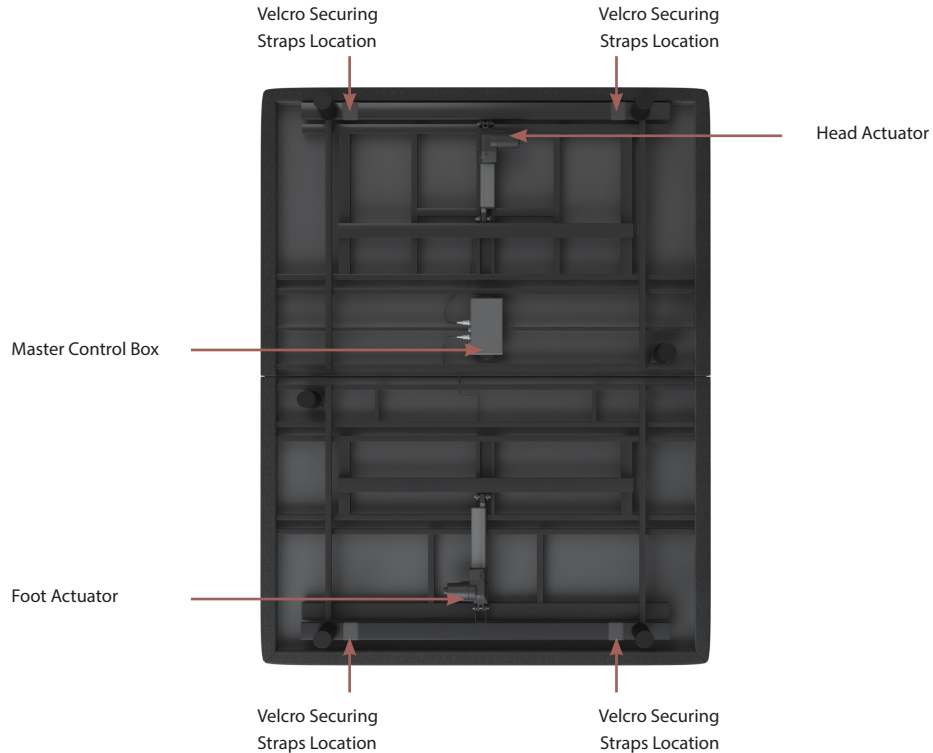
In case of an electrical outage, the Emergency Battery Strip allows you to operate the adjustable base without power to your home. Only use the Emergency Battery Strip to lift or lower the adjustable base into your desired sleeping position.

- \* Disconnect the adjustable base(s) from the power outlet.
- \* Locate the Emergency Battery Strip and install two 9-volt batteries.
- \* Attach the Emergency Battery Strip to the power cord.
- \* After the electricity is restored, the Emergency Battery Strip must be removed before plugging the adjustable base back into the power outlet.

**WARNING:** Using the Emergency Battery Strip while the adjustable base is plugged into a power outlet may cause the electrical components to short out and damage the Master Control Box.



# REFERENCE GUIDE



# FAQ

## WILL THE ADJUSTABLE BASE FIT INSIDE MY CURRENT BED FRAME?

Yes, we designed the adjustable base width and length to be 1/2" shorter than standard bed sizes to ensure the adjustable base fits within most bed frames.

## ADJUSTABLE BASE DIMENSIONS

Twin XL: 37.5"W x 79.5"L x 15"H

Full: 53.5"W x 73.5"L x 15"H

Queen: 59.5"W x 79.5"L x 15"H

Split King: (x2) 37.5"W x 79.5"L x 15"H

Cal King Split: (x2) 35.5"W x 83.5"L x 15"H

## WHERE CAN I PURCHASE ACCESSORIES?

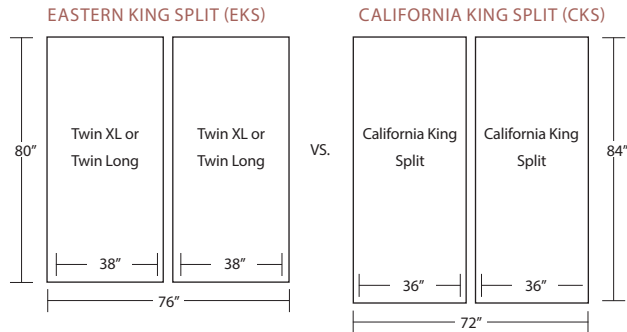
Call Customer Service for additional parts or accessories such as headboard/footboard brackets, split top adapter, additional remotes, specialty bedding, etc; sold separately.

## WHAT SHEET SIZE DO I PURCHASE FOR A SPLIT KING OR CAL KING SPLIT MATTRESS?

Eastern Split King (EKS): Eastern King Split Sheet Set OR (2) Twin XL Sheets.

Cal King Split (CKS): Cal King Split Sheet Set.

SEE DIAGRAM TO THE RIGHT



Overall sleeping surface area is the same in the EKS and CKS.

The EKS is wider by 4" and the CKS is longer by 4".





NEED TO TALK TO OUR COMFORT EXPERTS?

**CALL 1-877-622-6550**

CUSTOMER SERVICE HOURS: MONDAY THRU FRIDAY FROM 7:30AM TO 5:00PM PST

INTENTIONALLY LEFT BLANK

