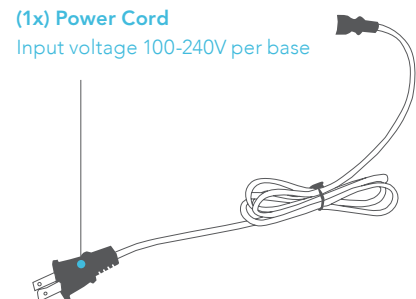
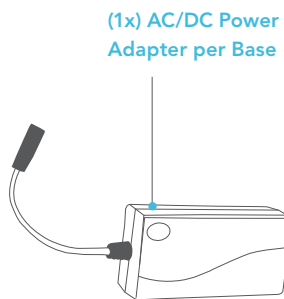
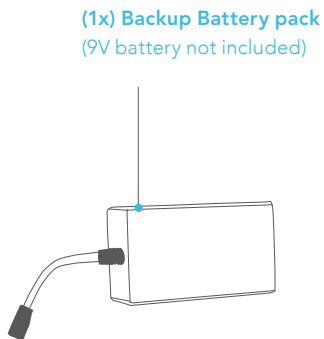
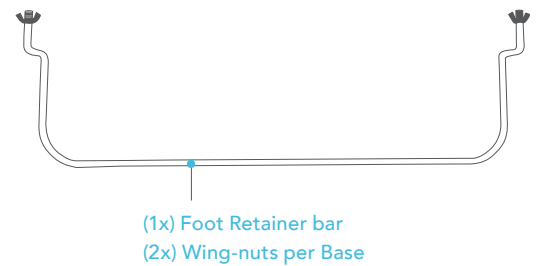
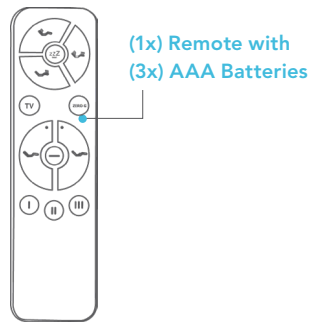
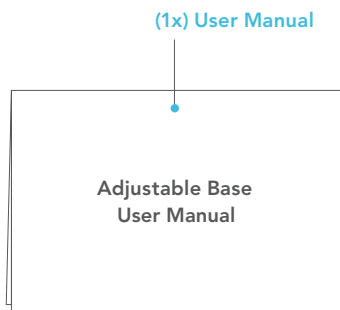


ADJUSTABLE BASE QUICK ASSEMBLY GUIDE

NO TOOLS REQUIRED FOR ASSEMBLY

Use caution at pinch points while unfolding the base as parts may have shifted during shipping.

Unpack components for assembly:



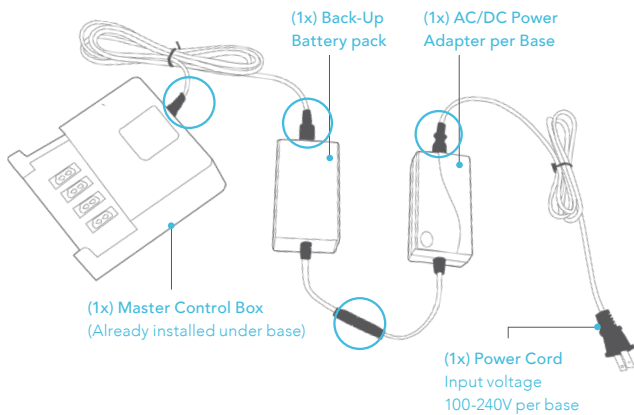
ADJUSTABLE BASE QUICK ASSEMBLY GUIDE

STEP 1: POWER CORD SETUP

CAREFULLY open the adjustable bed base into an L position on its side or lay flat with the bottom facing up. This step may require two adults for safety.

Ensure all power cord connections circled to the right are completely plugged-in.

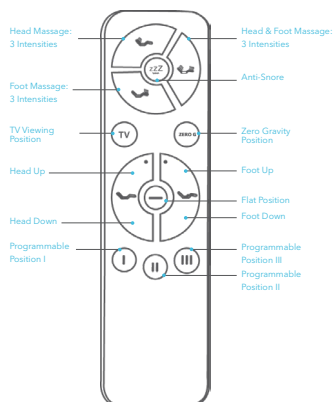
Installation of the Backup Battery Pack is optional. Only put batteries into the Backup Battery Pack during an electrical outage and after the power cord is unplugged from a power source. Leaving in the 9 Volt batteries in the Emergency Battery Back Up Box after power has been restored will cause the electrical components to short out and damage the master controller.



STEP 2: INSTALL REMOTE BATTERIES

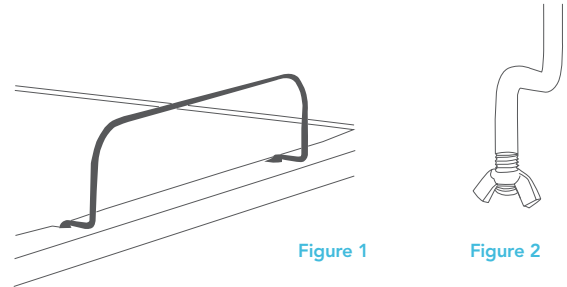
Locate the wireless remote control and insert (3x) AAA batteries (included). The remote control is pre-programmed to work with the adjustable bed base.

If you have more than one adjustable bed base, each remote control and adjustable bed base set should be pre-programmed to work separately. This will prevent both beds from being controlled by one wireless remote control.



STEP 3: INSTALL MATTRESS RETAINER BAR

Slide the retainer bar into the opening at the foot of the bed. Secure the retainer base (Figure 1) with the included wing-nuts (Figure 2).



STEP 4: RETURN TO UPRIGHT POSITION

CAREFULLY place the adjustable bed base onto all six legs and plug the power cord into a power outlet. Place a mattress on the adjustable base once the bed is plugged in and functioning correctly. Use a memory foam, latex or acceptable hybrid mattress at least 8" in height.

See manual for Connecting Strap and Sync cable instructions for Split King/Cal King Bases.