

Contemporary III-O

Mobile App Guide

Android App: [View on Google Play](#)
iOS App: [View on App Store](#)

Using the Rize® Contemporary III - O mobile app

Your adjustable bed can be controlled using your iOS or Android smart device through the Rize® Contemporary III - O mobile app.

Before connecting your bed to the mobile app, do the following:

- Make sure your adjustable bed is plugged into a working electrical outlet and the control box is on.
- Download and install the Rize Contemporary III – O mobile app from the App Store® or the Google Play Store™. Make sure to download the correct app as this adjustable bed does not work with the older version. The older version of the app is named Rize Contemporary III.
- For iOS users, turn on your device's Bluetooth®. For Android users, turn on your device's Bluetooth® and Location settings.



Connecting to your adjustable bed

1. If you are connecting your bed to the mobile app for the first time, enable the mobile device pairing mode on your bed's control box.


Unplug the power cord from the outlet and then plug it back in. The LED light on the control box turns blue. After 20 seconds or after being operated by a paired remote control, the LED light turns green and the control box enters mobile device pairing mode.

NOTE: The control box stays in mobile device pairing mode for 60 seconds and the name of your bed is now visible on the app. Proceed to step 2 to connect the mobile app to your adjustable bed.



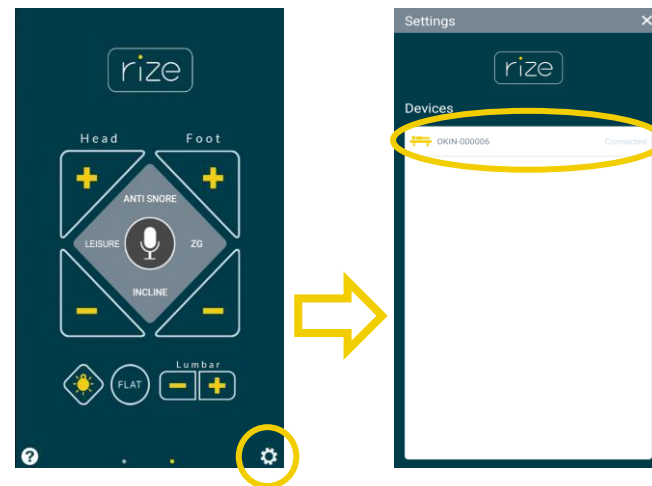
Unplug the power cord, and then plug it back in.

Connecting to your adjustable bed

- From your mobile device, launch the app, and then tap the gear  icon to go to the **Settings** screen.
- From the Devices list, select the name of your adjustable bed. The name of your adjustable bed is on the sticker on the front cover of the Owner's Manual and on the bed's control box.

NOTES:

- If your bed is not on the Devices list, make sure your bed is in mobile device pairing mode. See step 1 for options to enable the mobile device pairing mode on your bed's control box.
- You can only connect one smart device to one adjustable bed at a time.
- The bed is automatically disconnected from the app when you close the app (not running in the background) or move out of range of the connection. Repeat steps 2 and 3 to reconnect the bed to the app.



Sample sticker with the name of your adjustable bed.

Controlling the head, lumbar, and foot sections of your bed



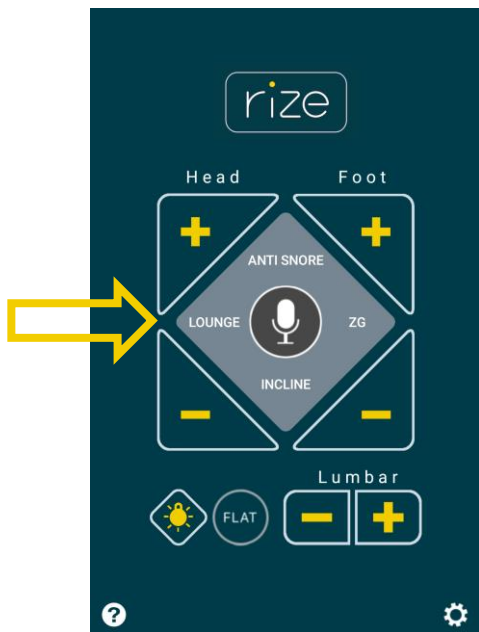
Tap and hold the (+) or (-) buttons for the head, lumbar, or foot section of your adjustable bed to raise or lower them.

To control the head, lumbar, and foot sections using voice commands, tap the microphone button in the center of the screen.

NOTE: The Voice Commands List can be found on page 10.

To switch between the screens of your app, swipe left or right.

Controlling the bed presets



Tap the preset button you want to activate. The preset buttons are ANTI SNORE, LOUNGE, ZG (Zero Gravity), INCLINE, and FLAT.

To customize the presets, adjust your bed to the desired position then tap and hold the preset button for 3 seconds.

NOTES:

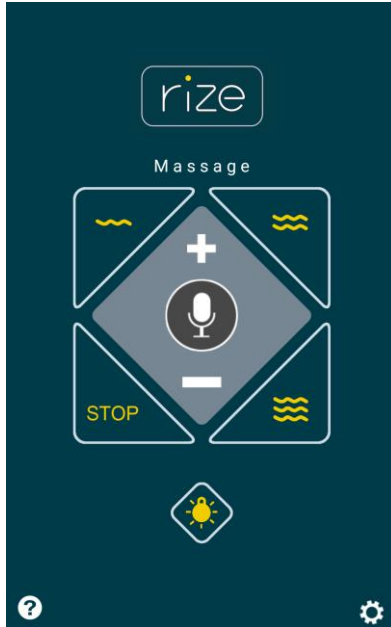
- You can only customize the Lounge, Incline, and ZG buttons.
- To restore the preset positions back to factory settings, disconnect the bed from the app, and then reset the system using the remote control. For more information, see the “Resetting the system” topic on your Owner’s Manual.

To activate the presets using voice commands, tap the microphone button in the center of the screen.

NOTE: The Voice Commands List can be found on page 10.

To switch between the screens of your app, swipe left or right.

Controlling the massage feature



Tap the different massage buttons to turn on your bed's massage feature. Tap the STOP button to turn off any active massage.

To increase or decrease the massage intensity, tap and hold the (+) or (-) button.

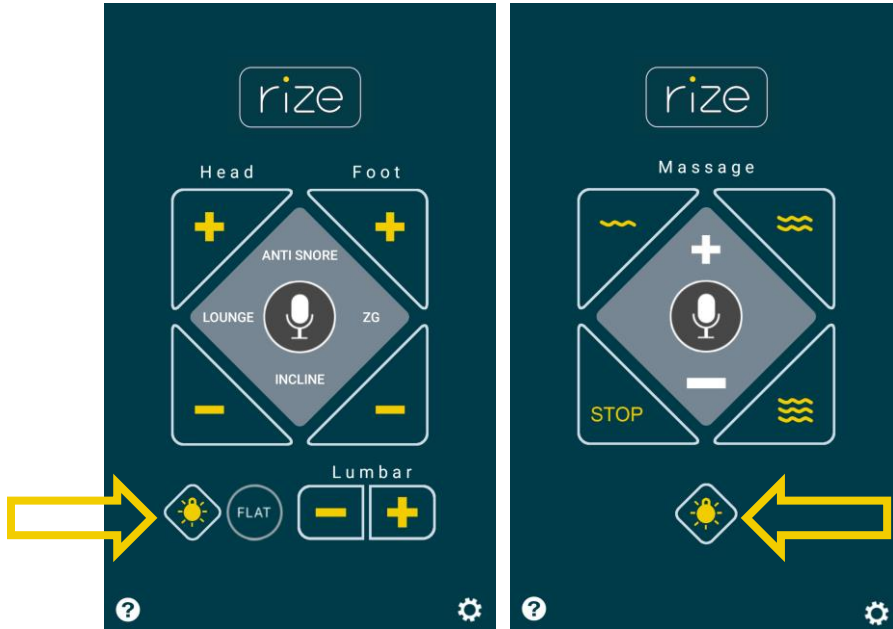
To change the different massage feels, tap the different wave buttons.

To activate the massage feature using voice commands, tap the microphone button in the center of the screen.

NOTE: The Voice Commands List can be found on page 10.

To switch between the screens of your app, swipe left or right.

Controlling the under-bed lights



Tap the light button to turn your under-bed lights on.

To toggle through the seven (7) colors, tap the light button several times when the light is on.

To turn off the under-bed light, tap and hold the light button for 2 seconds.

To activate the under-bed lights using voice commands, tap the microphone button in the center of the screen.

NOTE: The Voice Commands List can be found on page 10.

To switch between the screens of your app, swipe left or right.

Controlling two adjustable beds in tandem

Before operating beds in tandem using the mobile app, do the following:

- Make sure both beds are plugged into working electrical outlets.
- Make sure both beds are in a flat position to align them properly.

1. Connect the sync cable to the SYNC port on the control box of both adjustable beds.
2. Connect the mobile app to either one of the beds.

As long as both adjustable beds are connected with the sync cable, you can operate both beds in tandem using only one mobile device.



Connect the sync cable to the control box on both beds to operate them in tandem mode using the mobile app.



Voice Commands List

To activate the functions of your adjustable bed using voice commands, tap the microphone button in the center of your screen.

A message prompts you to say the voice command. If the command is correct, the message disappears and the bed adjusts accordingly. If the command is incorrect, a pop-up appears prompting you to speak the correct command. To dismiss the prompt after an incorrect command, tap anywhere outside the message. Tap the microphone button again to give the correct voice command.

NOTE: Make sure to speak the exact phrases in the list below for the bed to function properly according to the command.

Head Up - Lifts head section.
Head Down - Lowers head section.
Foot Up - Lifts foot section.
Foot Down - Lowers foot section.
Lumbar Up - Lifts lumbar section.
Lumbar Down - Lowers lumbar section.
Stop - Stops all lift activities.

Lounge - Activates the Lounge position.
Zero - Activates the Zero Gravity position.
Snore - Activates the Anti-Snore position.
Incline - Activates the Incline position.
Flat - Activates Flat position.

Message On - Starts message wave 1.
Wave One - Starts message wave 1.
Wave Two - Starts message wave 2.
Wave Three - Starts message wave 3.
Message Off - Turns message motors off.

Light On / Lights On - Activates the under-bed light.
Toggle Lights - Toggles through the under-bed light colors.
Light Off / Lights Off - Turns the under-bed light off.



FOR ASSISTANCE, PLEASE CALL OUR
CUSTOMER SERVICE TOLL FREE NUMBER

1-843-800-8372

All product names, brands, and trademarks are the property of their respective owners.

MANS5AG001 | AWMANS5AG-2 | 06.08.2020