

# Embi Tec Pre-Cast Gel Guide

## Gel Compatibility

RunOne™ Pre-Cast Gels do not require a specific gel apparatus. They will work in a gel box which has a platform of sufficient size. We recommend using the RunOne™ Electrophoresis System, as we have optimized all run parameters on this system.

## Buffer Capacity

TBE has a higher buffer capacity than TAE. The buffer capacity for TAE is relatively low and can become exhausted over long runs.

## Temperature

TBE tends to run cooler than TAE. For example, when TBE is compared to TAE in the RunOne™ Electrophoresis System, the TBE buffer is 5-10°C cooler over a 40 minute run at 100V.

## Resolution

The resolving power of TAE and TBE are nearly identical with the exception of supercoiled DNA which is better resolved in TAE than in TBE.

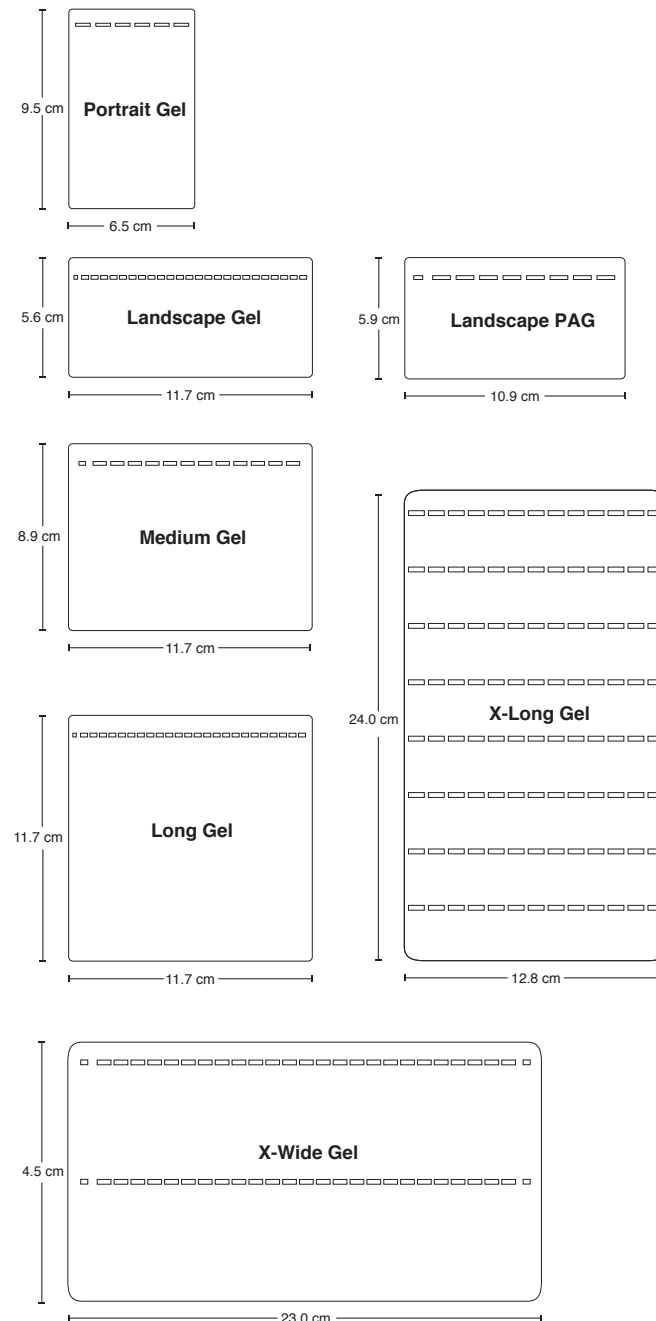
## Run Times

Double stranded linear DNA migrates about 10% faster through TAE than TBE, but because TBE runs cooler, the bands are sharper and straighter.

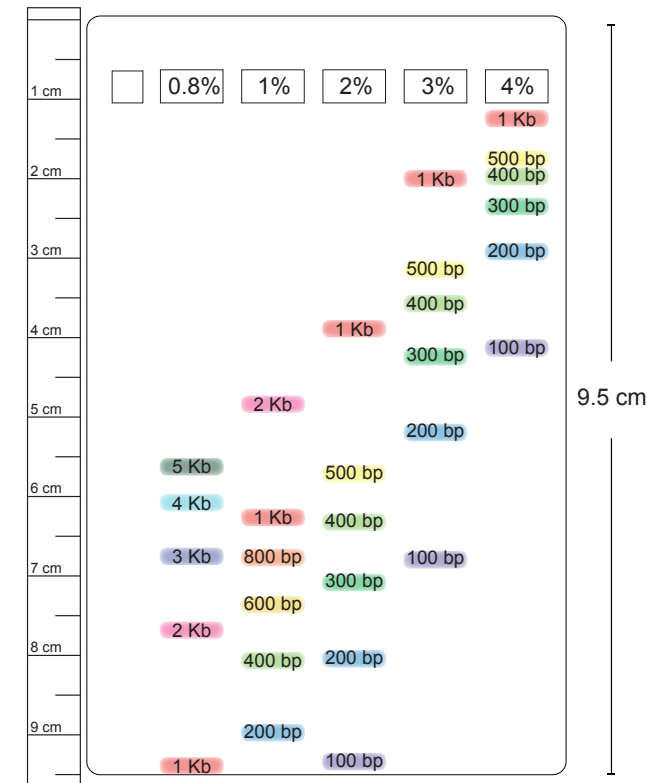
## Shelf Life

- **0.8%-3% Agarose gels with EtBr** - 7 months at room temperature
- **4% Agarose gels with EtBr** - 3 months at room temperature
- **GreenGel** - 3 months at room temperature
- **Agarose gels with no stain** - 1 year at room temperature
- **Polyacrylamide gels** - 6 months at 4°C

## Gel Size Guide



## Resolution Guide



(858) 684-3190

info@embitec.com