



Extended pedal kit to suit all X5 series 1 and 2, X6 and X6.1 senior karts.



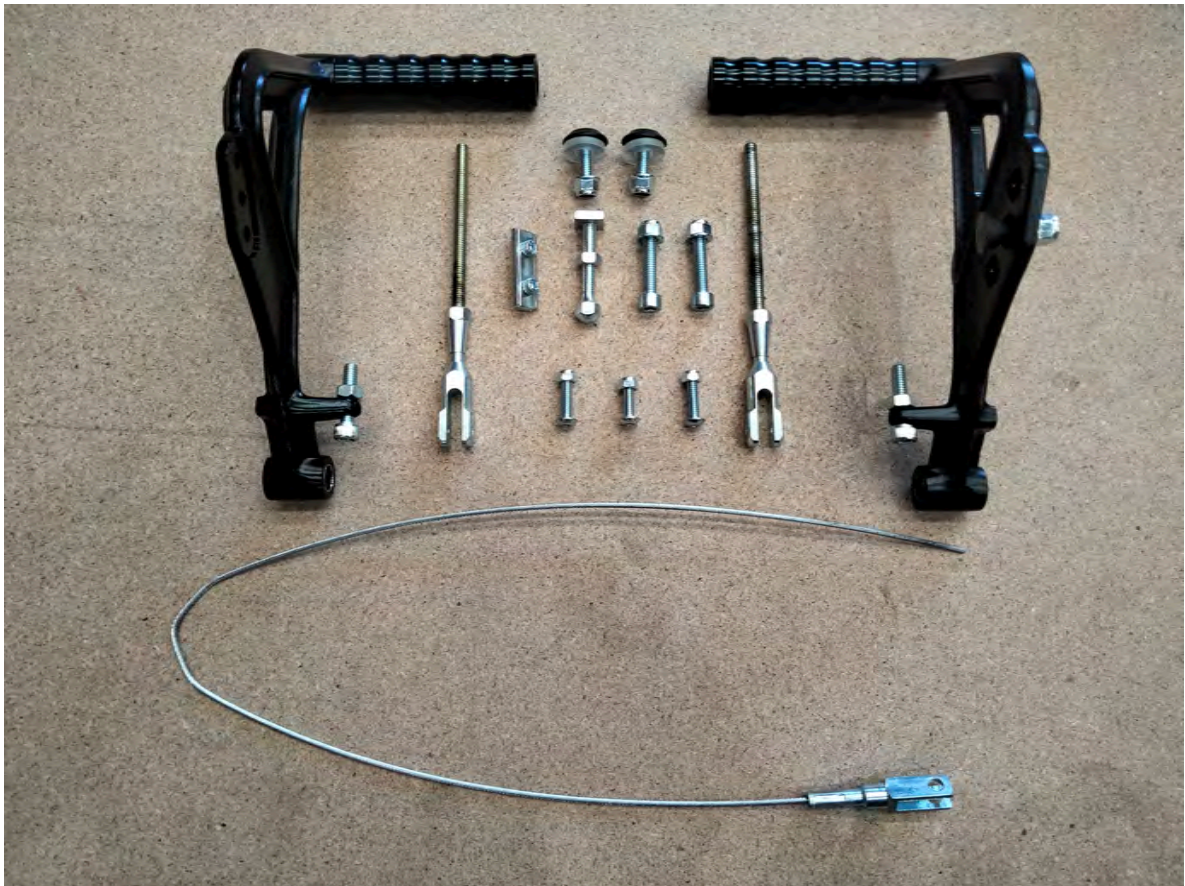
From Standard assembled kart

STEP 1

Remove top crashbar, Undo brake rod clevis lock nuts and remove them from the standard brake rod, remove safety cable from brake pedal, remove pedals, remove throttle stop bolt and square nut, Remove standard lower crashbar from kart.



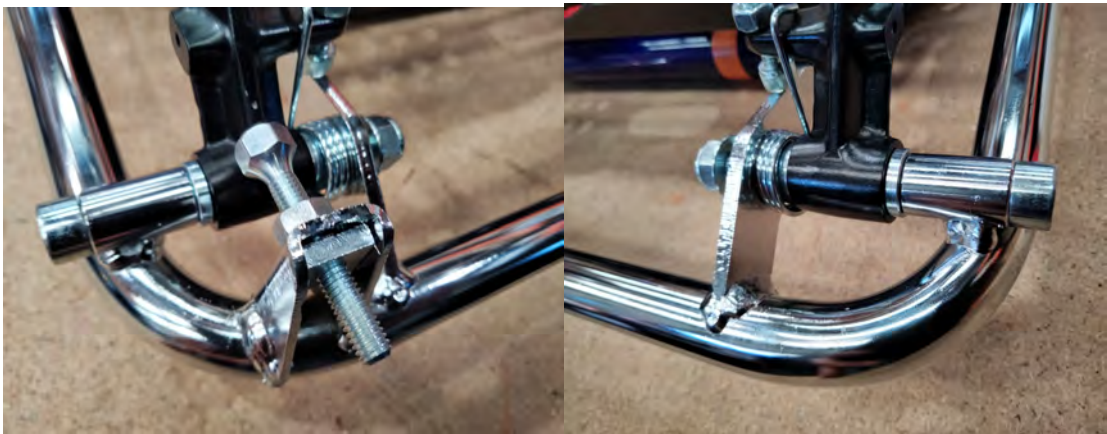
(Items being reused shown below. They are, Pedals, throttle pedal stop and square nut, brake rod clevis ends and nuts and fitting bolts and nuts, broke safety cable/bolt/nut and clamp, lower and upper crashbar bolts/nuts and washers)





STEP 2

- Fit extended lower crash bar onto spigots on the chassis.
- Fit the throttle pedal stop and square nut onto the crashbar.
- Insert pedal bushes into pedals. (Longest one on the inside and the short one on the outside)
- Fit spring on over the longest side bush on the pedal.
- Insert the pedal assembly into position on the pedal bar and slide the M8 x 75mm cap screw ensuring the spring loop is on the front side of the pedal and the small end hoop of the spring slides underneath the chrome tag on the crashbar.



STEP 3

Heelrest.

As this will be used to hold the weight of the driver's feet and part of the weight of their legs, all care must be taken to ensure the 2 of M6 bolts holding the 2 main parts of the heelrest together are tightened appropriately. Use a sharp (unworn) 5mm allen key (preferably not a "t" bar) and tighten these 2 bolts to 12Nm minimum.





Place the 2 marked parts in this photo (below) underneath the heel rest and up inside the cutouts in the heelrest.

Take care of the direction (small blocks towards the centre and large blocks outward).

Place heelrest foot plate over the top and screw in the 4 countersunk bolts and black aluminium counter sunk washers and loosely fit the assembly back on the kart with the front lip of the plate forward of the front chassis rail tube.





Step 4

Fit top extended crashbar and plastic crashbar clamp set.

Fit Nassau brackets (508 version shown) (for 506 and 505 just fit the original brackets/spacer from standard)



Step 5

Assemble brake rod clevis ends into new extended brake rod and fit this back on the kart along with the safety cable.

Step 6

Adjust heelrest position, pedal stops and brake rod length to suit the driver and tighten all bolts and nuts.

NOTE: If the Nassau panel interferes with the driver's feet, trim as required.

Fit brake safety cable.



Thank you for choosing another market leading Kartech product.

Happy Karting!