

Roll Up Door (RUD) Frame Installation Instructions

Before You Begin

- Make sure you use proper PPE; steel-toed footwear, work gloves, hearing protection, and eye protection.
- Ensure your tools are in good working condition.
- Read & understand all instructions before beginning.

What you will need

- Saw or angle grinder
- Cutting disc
- Silicone sealant
- Marking tool (sharpie)

What is included

RUD Frame Components:

- Header (RUD-HDR-__FT)
- Footer (RUD-FTR-__FT)
- Right side (RUD-__-RH)
- Left side (RUD-__-LH)

Hardware:

6ft & 7ft RUD:	8ft RUD:	9ft RUD:	10ft RUD:
- 50 rivets	- 54 rivets	- 58 rivets	- 62 rivets
- 50 self-tapping screws	- 54 self-tapping screws	- 58 self-tapping screws	- 62 self-tapping screws
- 24 wood screws	- 24 wood screws	- 24 wood screws	- 24 wood screws

Installation

Before starting the process of installation please take note that:

- RUD frames are corrugation dependent. Accurate placement of your door opening is necessary for proper installation.
- Rivets are specified in the instructions as they are the recommended fastening method however, rivets can be swapped out for the self-tapping screws included in the kit.
- Instruction images use a 7ft HC RUD frame to show each step (fig. 1). Installation steps are the same regardless of door size.
- These instructions should be used in conjunction with our [How To Install a Roll Up Door and Framing Kit on a Shipping Container](#) YouTube video.

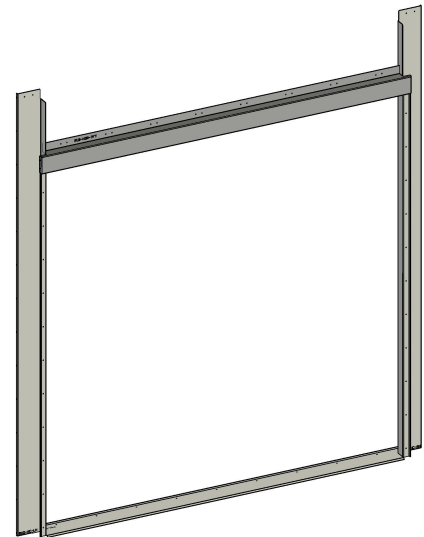
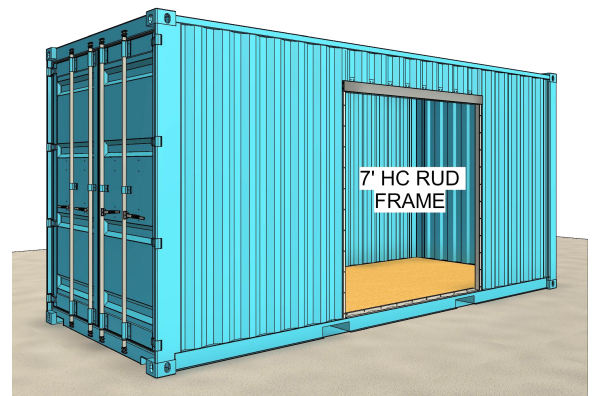


Figure 1 - 7ft HC RUD Frame



Step 1

Mark the rough opening appropriate for your door size (fig. 2). Each side of the opening should land on the center of an outside corrugation.

Ensure the marked opening is square and measures the proper dimensions prior to cutting your container.

Step 2

Place the sides of the frame over the sides of the rough opening with the longer flange on the inside of the container (fig. 3).

Step 3

Put the footer in place and butt the bottom of the left and right side pieces up to either end of the footer (fig. 4).

Rough Opening Sizes				
	Standard Height (STD)		High Cube (HC)	
	Height	Width	Height	Width
6ft RUD	84"	76 5/8"	91"	76 5/8"
7ft RUD	84"	87 5/8"	91"	87 5/8"
8ft RUD	84"	98 5/8"	91"	98 5/8"
9ft RUD	84"	109 7/16"	91"	109 7/16"
10ft RUD	84"	120 3/8"	91"	120 3/8"

Figure 2 - RUD Frame Rough Opening Sizes

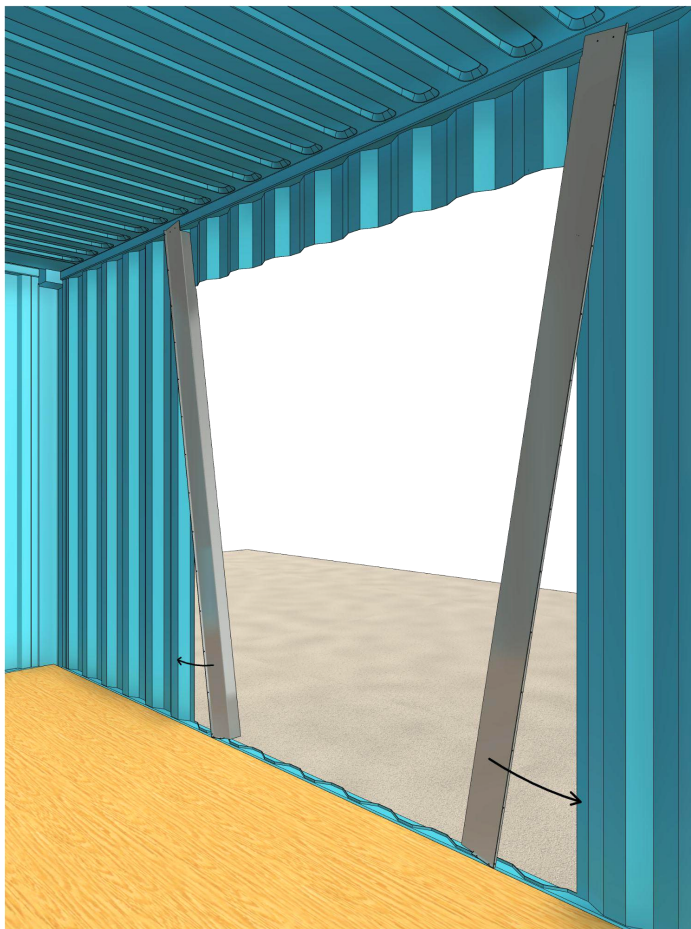


Figure 3 - RUD Left & Right Side Placement

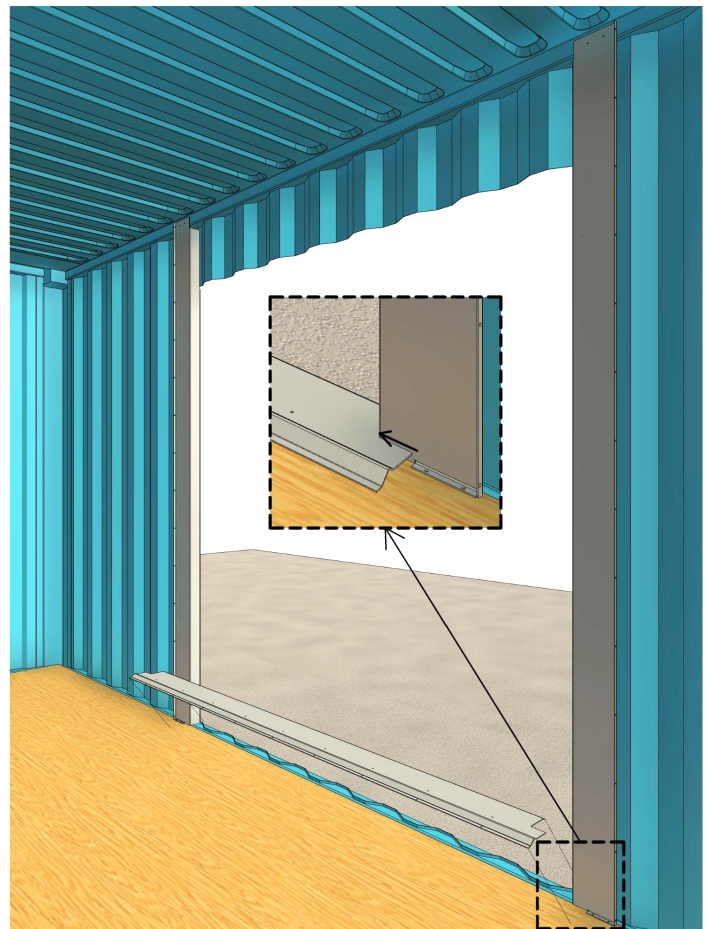


Figure 4 - RUD Footer Placement

Step 4

Pre-drill a hole and rivet the bottom of each side piece to the container from the exterior. Put the header in place and rivet it to the side pieces (fig. 5).

Step 5

Ensure that your frame is square and then screw the side pieces into the top tubing of the container with self-tapping screws (fig. 6).

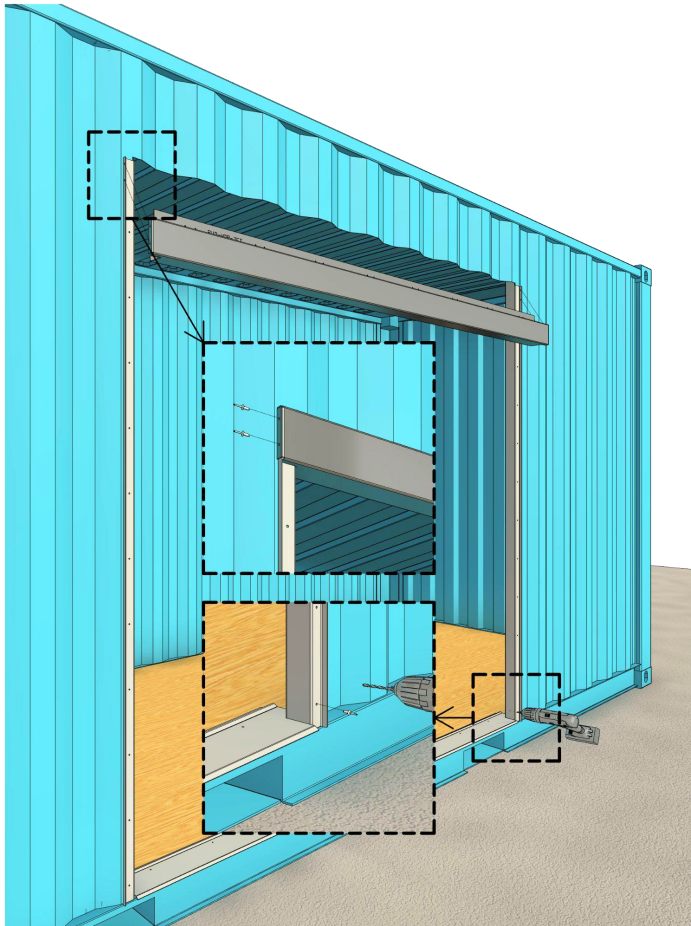


Figure 5 - RUD Fastening Bottoms of Side Pieces & Header Placement

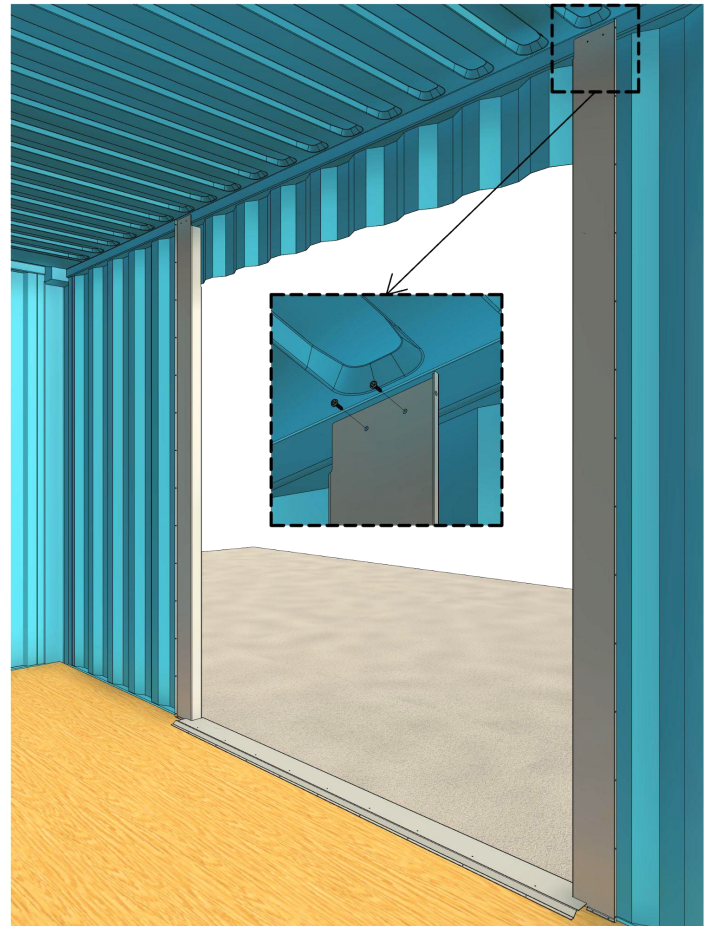


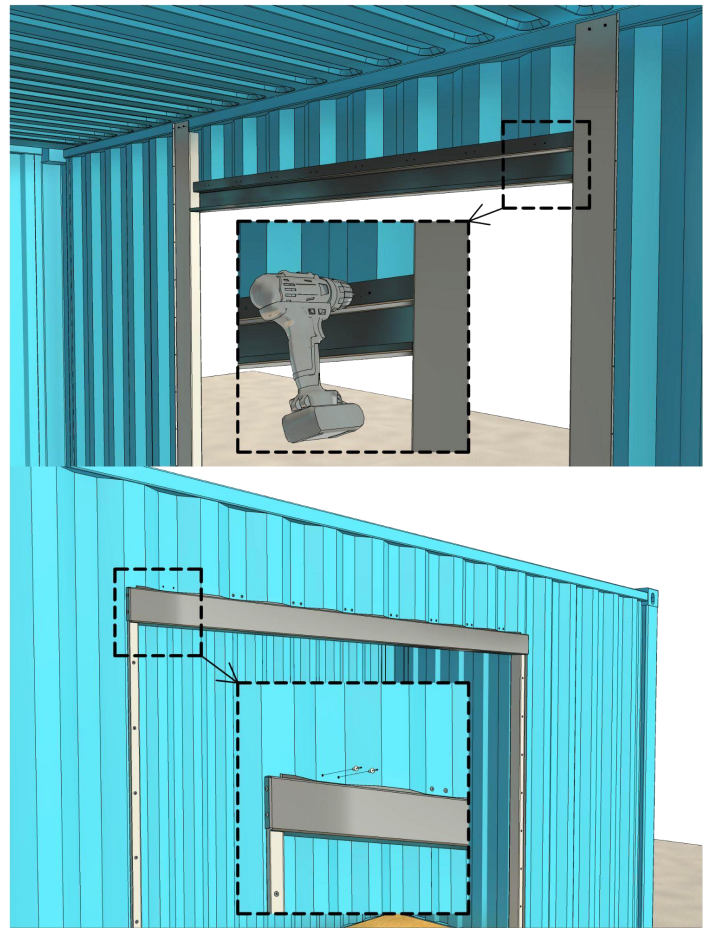
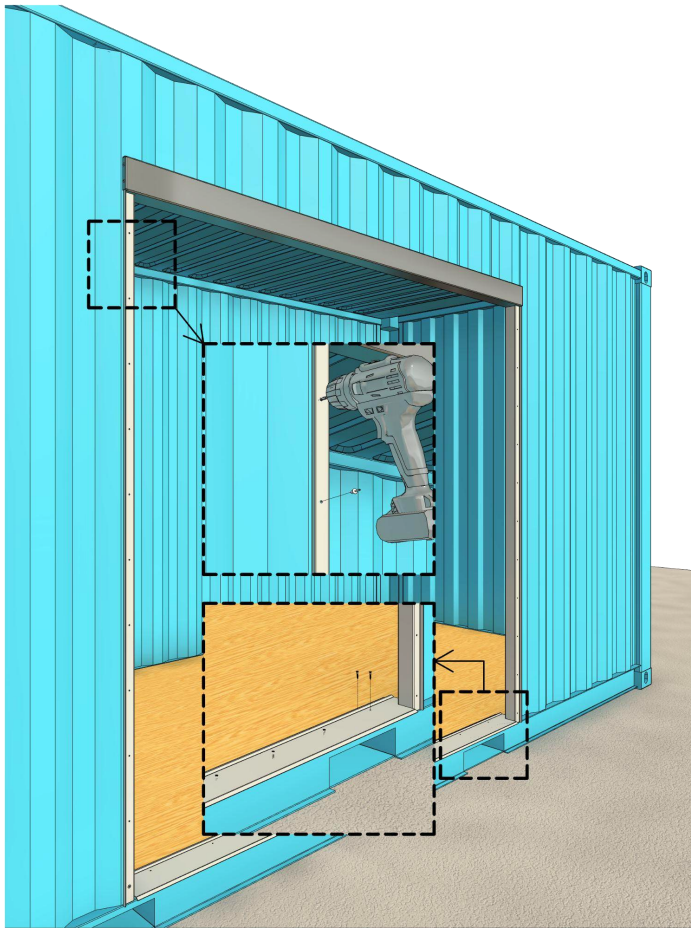
Figure 6 - RUD Fastening Tops of Side Pieces

Step 6

If the side pieces and container walls aren't flush with each other use a shim to bring them together. Pre-drill the rest of the holes for the side pieces and connect them to the container with rivets. Attach the footer to the container floor with wood screws (fig. 7).

Step 7

Pre-drill holes for fastening the header from the inside of the container then fasten the header to the container from the exterior (fig. 8)



Additional Information

An in-depth installation video can be viewed by scanning the code below with your phone's camera.

Visit [containermodificationworld.com](https://www.containermodificationworld.com) for more resources and product catalogs.

