

Interior Wood Stud Bracket (WSB) Installation Instructions

Before You Begin

- Make sure you use proper PPE; steel-toed footwear, work gloves and eye protection.
- Ensure your tools are in good working condition.
- Read & understand all instructions before beginning.

What you will need

- 7/32" Drillbit
- 1" Wood Screws
- Ten 2 x 4 or 2 x 6 wood studs

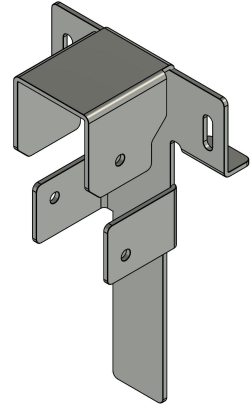


Figure 1 - Interior Wood Stud Bracket (WSB)

What is included

For 20ft Containers:

- 20 Interior Wood Stud Brackets (WSB) (fig. 1)
- Pack of 1/4" x 20UNC x 3/4" L Thread Cutting Screws

For 40ft Containers:

- 40 Interior Wood Stud Brackets (WSB) (fig. 1)
- Pack of 1/4" x 20UNC x 3/4" L Thread Cutting Screws

Installation

Before starting the process of installation please take a note that :

- Interior Wood Stud Brackets are **not** corrugation dependent. They can be installed anywhere along the interior of the top container tubing.
- The recommended spacing for these brackets is 2' - 0" on center.
- Ensure bracket locations are all marked accurately and align with the mark across from it prior to beginning installation



Step 1

Place the first bracket on the top container tubing against the end wall corner casting and mark the center location. Starting at this line create a mark every 2' - 0" for the next 9 brackets (fig. 2). Repeat this step for the other side of the container.

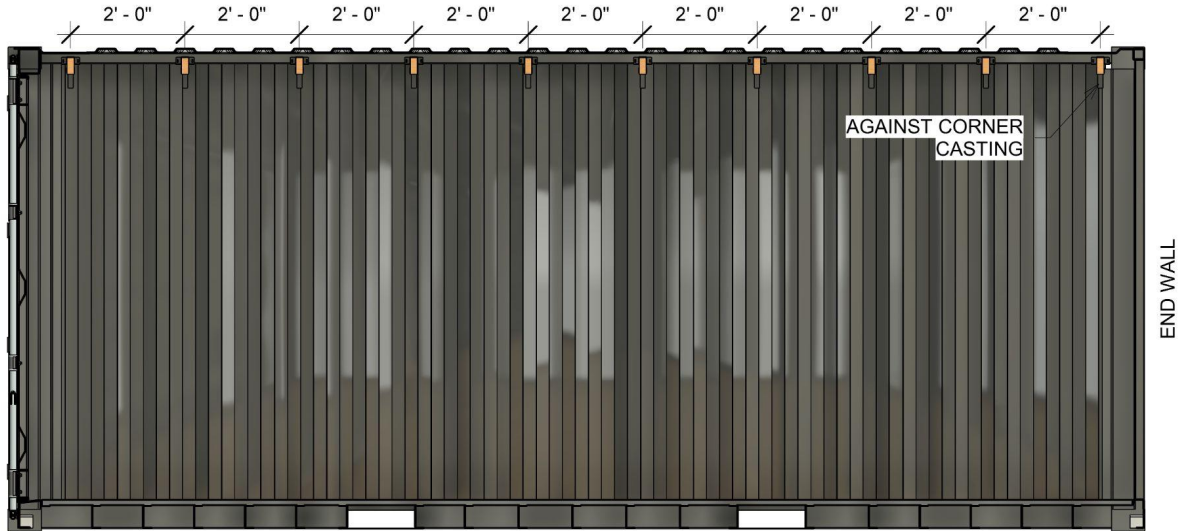


Figure 2 - Container Wall Elevation

Step 2

Line up the middle of the WSB with the center mark and mark the locations of both mounting screws (fig. 3). Drill these holes with a 7/32" drillbit (fig. 4).

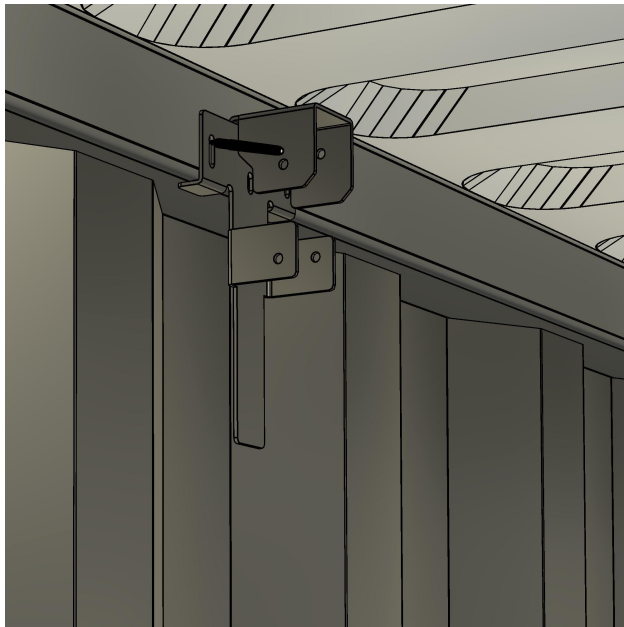


Figure 3 - Marking Holes

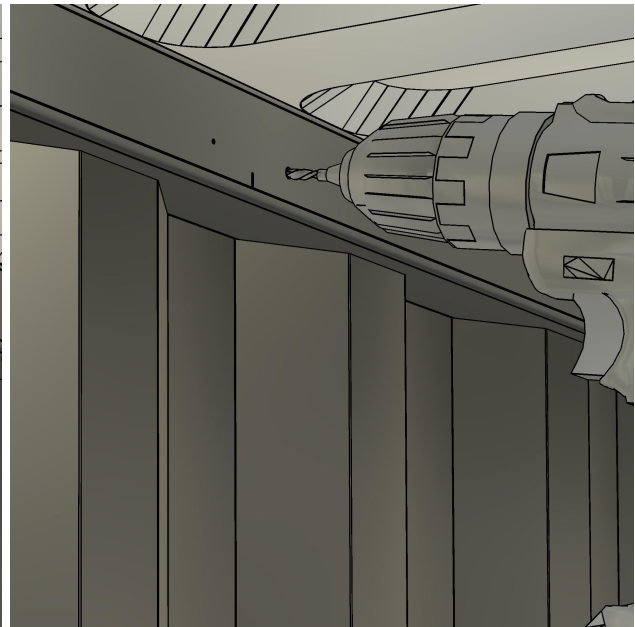


Figure 4 - Drilling Holes

Step 3

Place the WSB back onto the container tubing (fig. 5) and fasten it in place with thread cutting screws (fig. 6). Repeat steps 2 & 3 on both sides of the container.

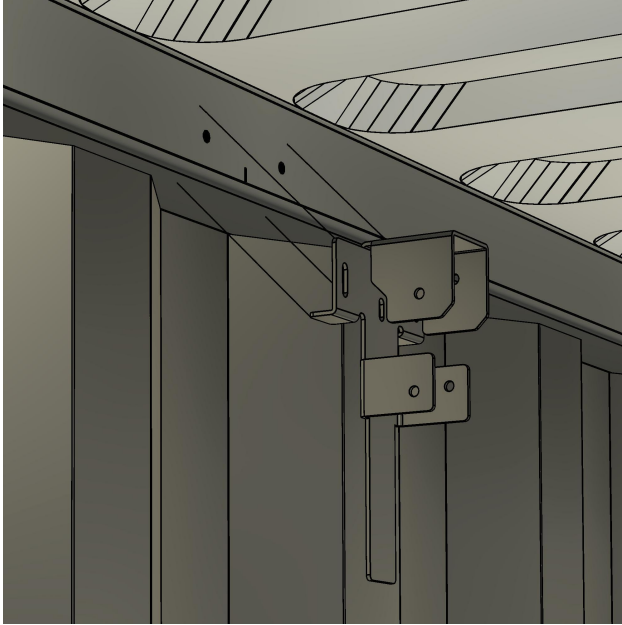


Figure 5 - Placing WSB

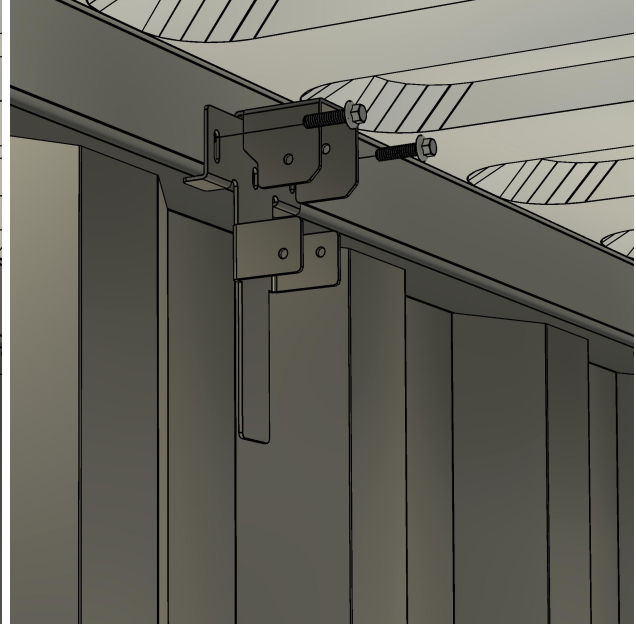


Figure 6 - Fastening WSB

Step 4

Insert pre-cut 2 x 4 or 2 x 6 dimensional lumber (approx. 7' - 7" long) into the WSB slots (fig. 7) and fasten using 1" wood screws (fig. 8).

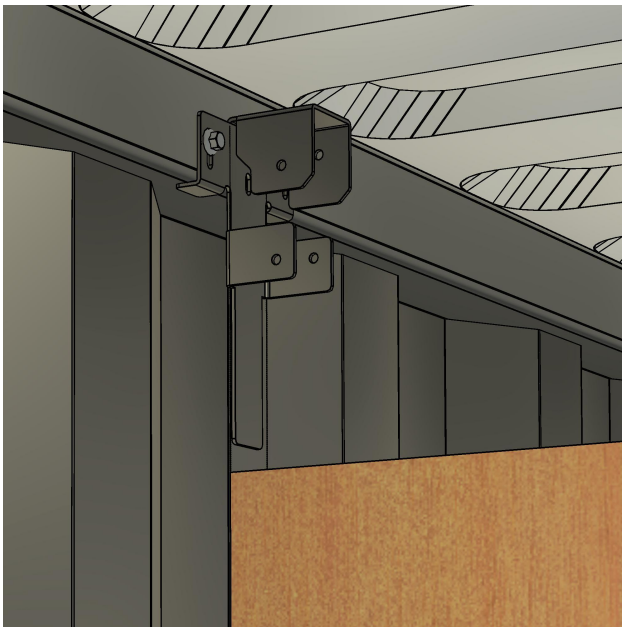


Figure 7 - Placing Wood Stud



Figure 8 - Fastening Wood Stud

Additional Information

An in-depth installation video can be viewed by scanning the code below with your phone's camera.

Visit containermodificationworld.com for more resources and product catalogs.

