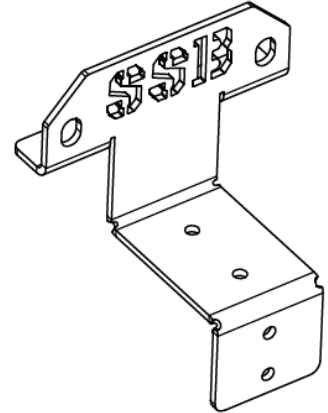


40' Steel Stud Bracket Installation Instructions

Before You Begin

- Make sure you use proper PPE; steel-toed footwear, work gloves, eye protection.
- Ensure your tools are in good working condition.
- Read & understand all instructions before beginning.

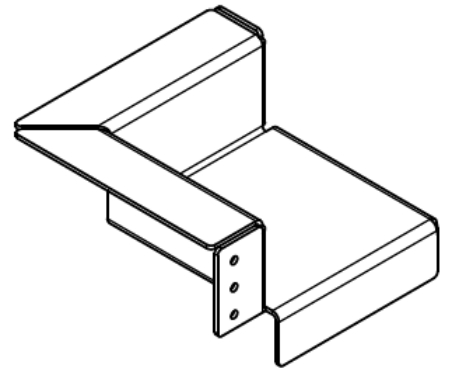


What you will need

- Screw Driver
- Drill

What is included

- Two Way Strut Bracket X 22
- Bottom Strut Bracket X 22
-
- Pack of No.8 1/2 screw
- Corner Castings Cover X 2



Assembly

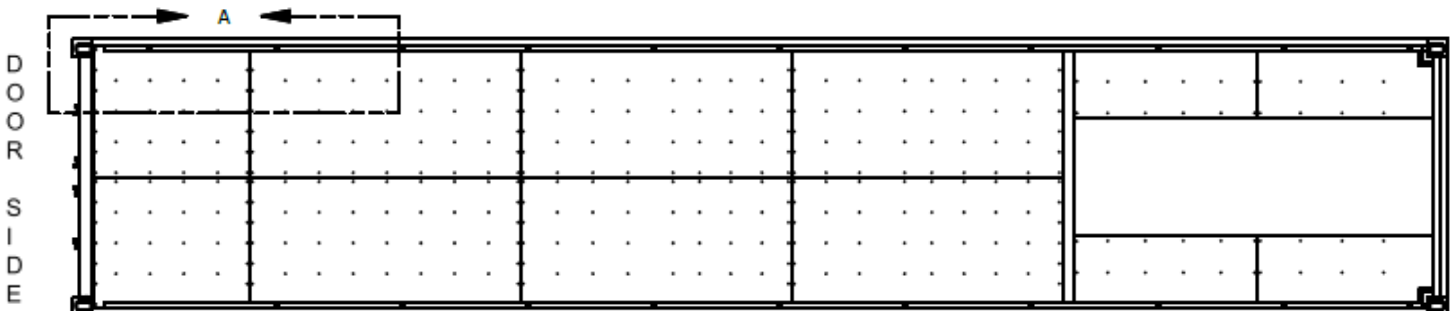


Figure 3 - Steel Stud Bracket Position Top View

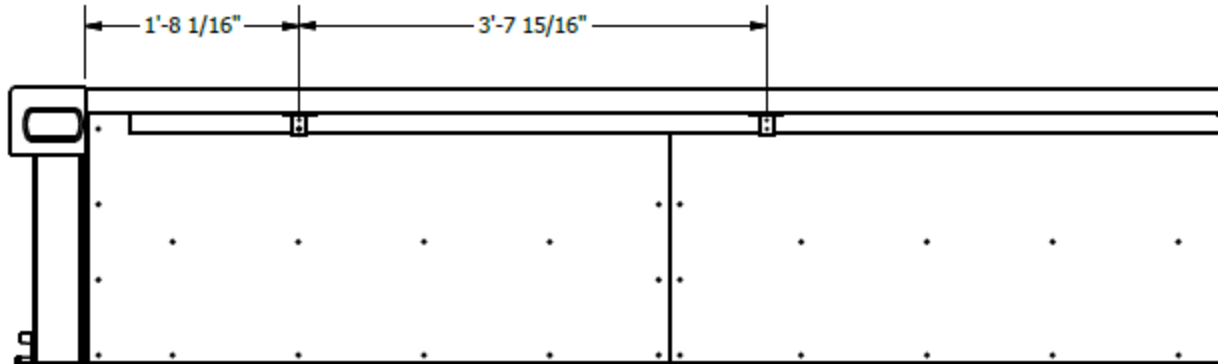


Figure 3.1 - Steel Stud Bracket Position Detail View A

Step 1

Install the “Steel Stud Bracket” to the tubing using No.8 ½” in screw as shown (fig 3). Install the 1st SSB at the 2nd corrugation from the doors and then every 4th corrugation (fig 3.1). Using the No.8 ½” screws and screwdriver/drill, fasten the top track with SSB as shown in the figure. Screw into holes (fig. 4). Install 11 brackets spaced evenly along both sides of the container.

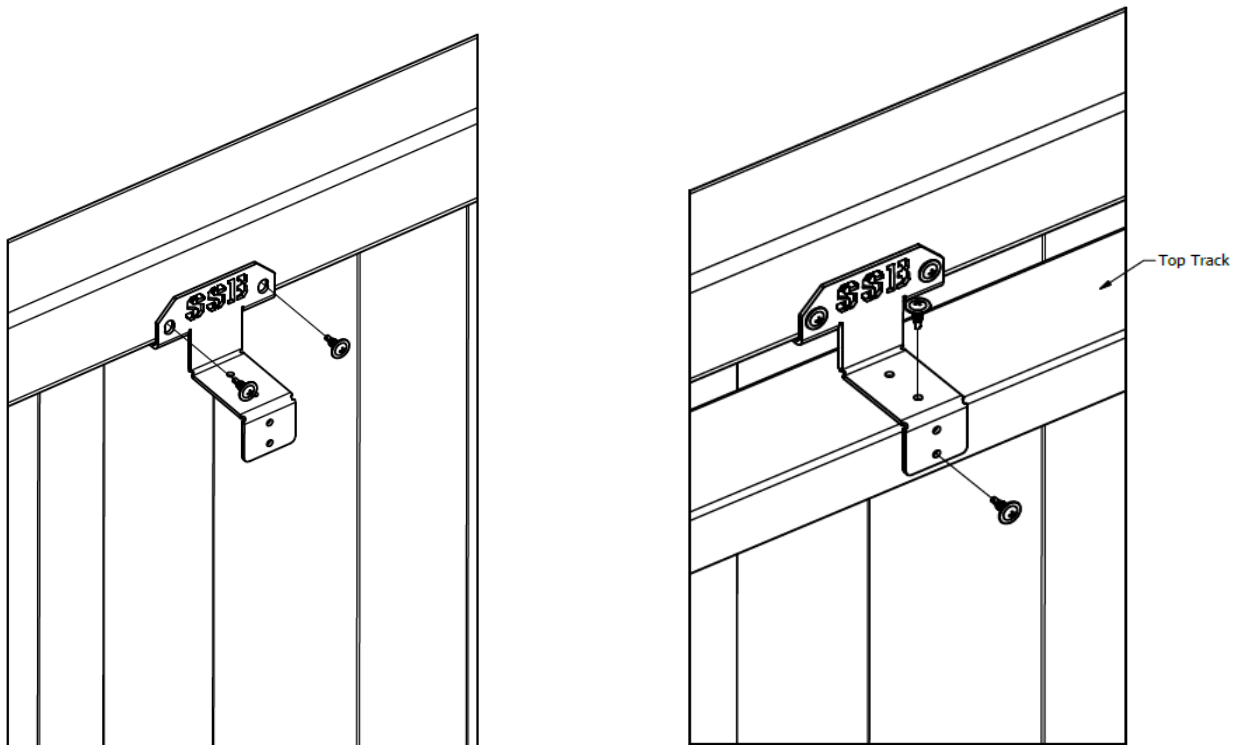
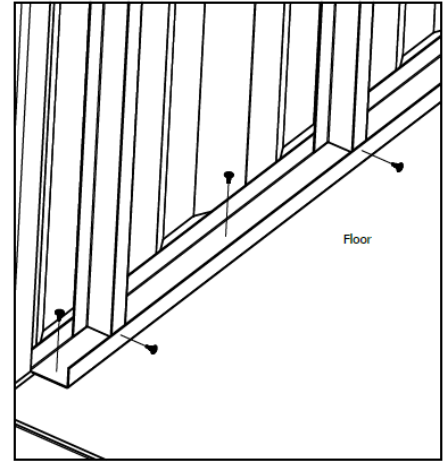


Figure 4 - Steel Stud Bracket & Top Track Installation

Step 2

Install the bottom track to the flooring using No.8 1/2" Screws. (fig. 5)



Step 3

Install the stud every 2nd corrugation starting at the 1st corrugation from the container door side. The center to center distance between each stud should be 22 inches (fig. 6).

Figure 5 - Bottom Track Installation

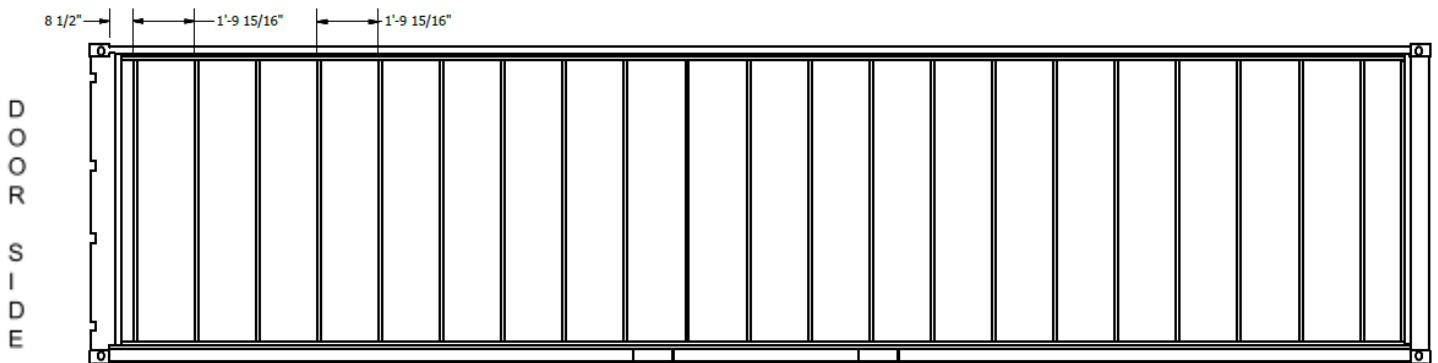


Figure 6 - Side Wall Stud Position

Step 4

Install the corner casting cover at the back corners of the container. Make flush with the top track. Place one stud at the end of the top track fasten the corner casting cover to both (fig. 7)

Step 5

Fasten the corner casting cover to the end wall top track (fig. 8). End wall track should be installed at the same height as the side wall track. Place a stud as shown (fig 8, fig. 9).

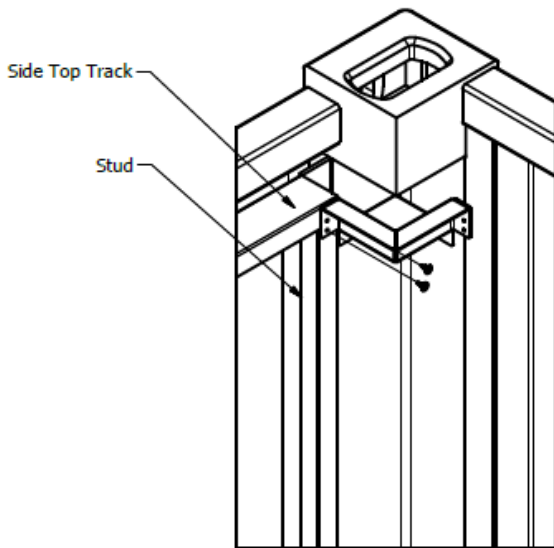


Figure 7 - Installation of Corner Casting Cover and Stud

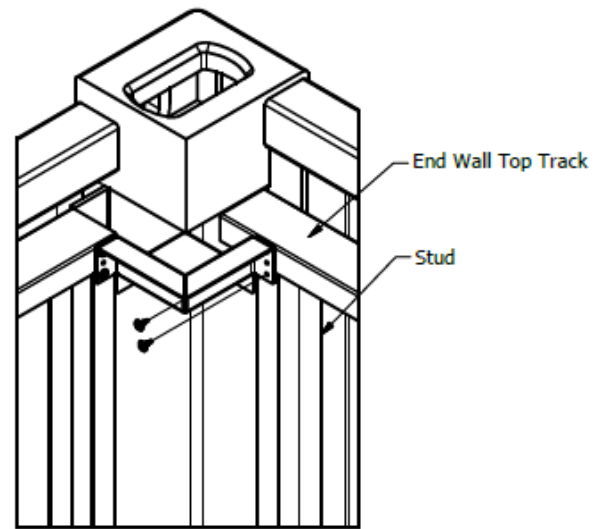


Figure 8 - Installation of End Wall Track and Stud

Step 6

Fasten the endwall bottom track to the floor and screw studs into the corner casting cover in both corners. Install 2 more studs along the end wall (fig 9). Fasten studs to both tracks.

