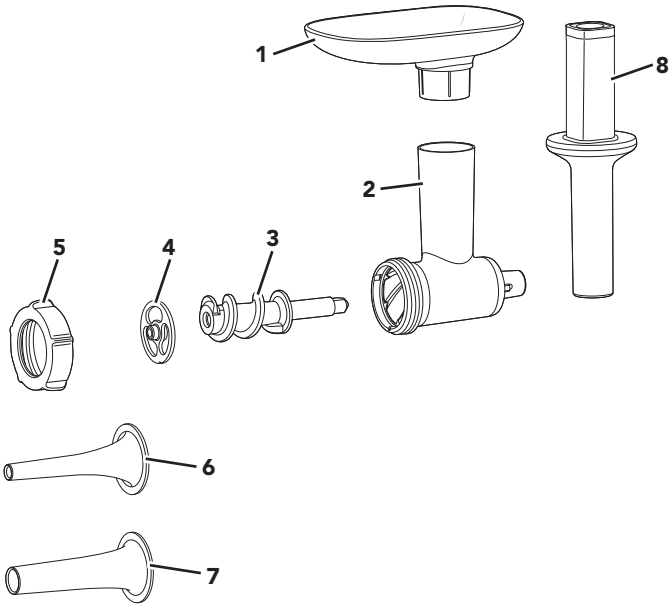




PARTS AND FEATURES



- | | |
|--------------------------|-------------------------------|
| 1. Removable Tray* | 5. Collar* |
| 2. Main Housing* | 6. Small Sausage Stuffer Tube |
| 3. Grind Screw* | 7. Large Sausage Stuffer Tube |
| 4. Sausage Stuffer Plate | 8. Food Pusher* |

*These parts are sold separately as model 5KSMFGA.





PRODUCT SAFETY

Your safety and the safety of others are very important.

We have provided many important safety messages in this manual and on your appliance. Always read and obey all safety messages.



This is the safety alert symbol.

This symbol alerts you to potential hazards that can kill or hurt you and others.

All safety messages will follow the safety alert symbol and either the word "DANGER" or "WARNING." These words mean:

⚠ DANGER

You can be killed or seriously injured if you don't immediately follow instructions.

⚠ WARNING

You can be killed or seriously injured if you don't follow instructions.

All safety messages will tell you what the potential hazard is, tell you how to reduce the chance of injury, and tell you what can happen if the instructions are not followed.

IMPORTANT SAFEGUARDS

When using electrical appliances, basic safety precautions should always be followed, including the following:

1. Read all instructions. Misuse of appliance may result in personal injury.
2. European Union only: Appliances can be used by persons with reduced physical, sensory or mental capabilities or lack of experience and knowledge if they have been given supervision or instruction concerning use of the appliance in a safe way and understand the hazards involved. Children shall not play with the appliance.
3. European Union only: This appliance shall not be used by children. Keep the appliance and its cord out of reach of children.
4. Turn the appliance off, unplug from outlet and detach the attachment from appliance before cleaning and when not in use. Turn the appliance off and make sure the motor stops completely before putting on or taking off parts.
5. This appliance is not intended for use by persons (including children) with reduced physical, sensory or mental capabilities, or lack of experience and knowledge, unless they have been given supervision or instruction concerning use of the appliance by a person responsible for their safety.
6. Children should be supervised to ensure that they do not play with the appliance.
7. Do not use the appliance outdoors.
8. Check the Main Housing for the presence of foreign objects before using.
9. Avoid contacting moving parts. Keep fingers out of discharge opening.
10. Never leave the appliance unattended while it is in operation.
11. The use of attachments not recommended or sold by KitchenAid may cause fire, electric shock, or injury.




PRODUCT SAFETY

12. Never feed food by hand. Always use the food pusher.
13. Refer to the “Care and Cleaning” section for instructions on cleaning the surfaces in contact with food.
14. Also see the Important Safeguards section included in the Stand Mixer Use and Care guide.
15. This appliance is intended to be used in household and similar applications such as:
 - staff kitchen areas in shops, offices and other working environments;
 - farm houses;
 - by clients in hotels, motels and other residential type environments;
 - bed and breakfast type environments.

SAVE THESE INSTRUCTIONS

DISPOSAL OF PACKING MATERIAL

The packing material is 100% recyclable and is marked with the recycle symbol . The various parts of the packing must therefore be disposed of responsibly and in full compliance with local authority regulations governing waste disposal.





PRODUCT USAGE

GUIDE TO GRINDING

NOTE: None of the parts and accessories of this KitchenAid Sausage Stuffer attachment (model 5KSMSSA) are compatible with the parts and accessories of the KitchenAid Metal Food Grinder Attachment (model 5KSMMGA) or previous KitchenAid Food Grinder Attachment (model FGA) and vice versa.

USE THESE PARTS	WITH THESE PARTS	SUGGESTED USES	SPEED
Small Sausage Stuffer tube (9.5 mm)	Sausage Stuffer Plate and Blade	Breakfast Sausage, smaller Sausages	4
Large Sausage Stuffer tube (19 mm)	Sausage Stuffer Plate and Blade	Bratwurst, larger Sausages	4

ASSEMBLING THE ATTACHMENT

Before first use, clean all parts and accessories (see "Care and Cleaning" section).

1

Insert the Grind Screw into the Main Housing.

2

Place the Sausage Stuffer plate, matching the notch of the plate with the tab on the bottom of the Main Housing.

3

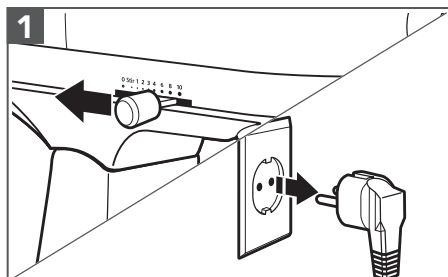
Insert the desired Sausage Stuffer Tube (large or small) through the Collar. Place the Collar and Sausage Stuffer Tube on the Main Housing, and turn the Collar clockwise until secured.



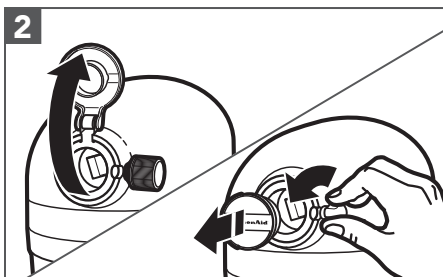


PRODUCT USAGE

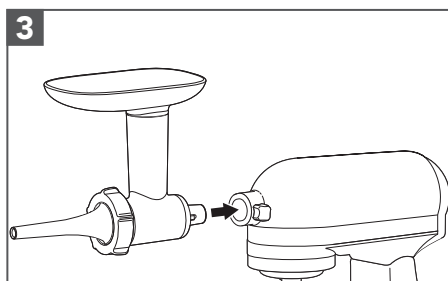
ASSEMBLING THE ATTACHMENT TO THE STAND MIXER



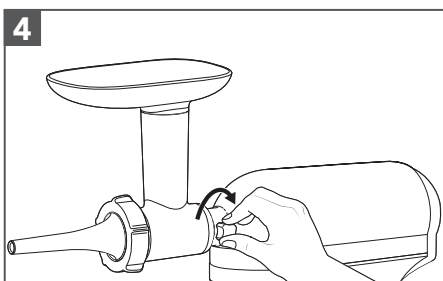
1 Turn the Stand Mixer off and unplug.



2 Remove the attachment hub cover.

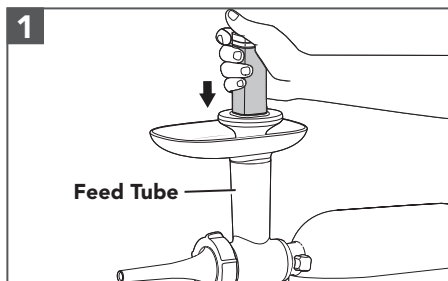


3 Insert the attachment shaft housing into the attachment hub.

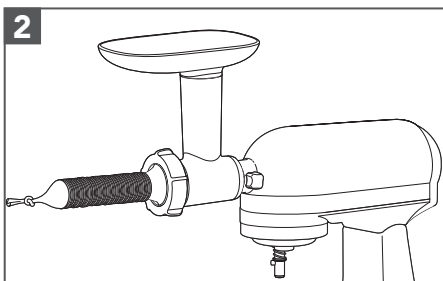


4 Tighten the Stand Mixer attachment hub knob clockwise until the attachment is completely secured to the Stand Mixer.

USING THE SAUSAGE STUFFER



1 Feed meat into the Food Grinder attachment before sliding the casing on the Sausage Stuffer tube. This will eliminate air pockets.

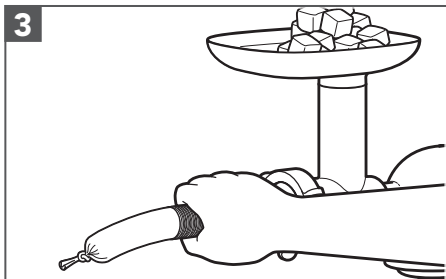


2 Lubricate the Sausage Stuffer tube and slide one casing over the tube, leaving about four inches to tie off the end.

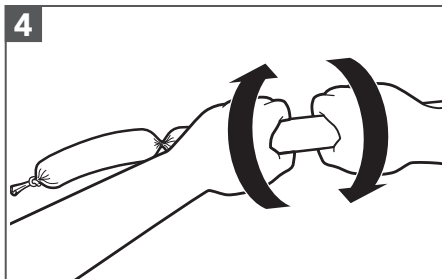




PRODUCT USAGE



3 Turn the Stand Mixer on to Speed 4 and slowly push the ground meat through the grinder. Hold the casing firmly as it fills. If air bubbles are created during the fill process, use a pin or needle to pop the bubble.

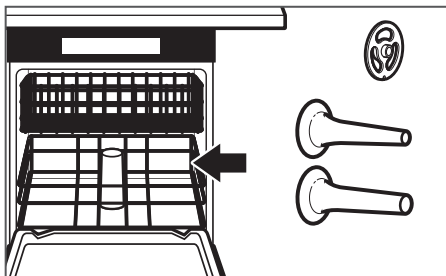


4 Run meat through until 4-6 inches of casing is left unfilled. Turn off the Stand Mixer and tie the remaining end of the casing, or use a tie string.

For segmented-type Sausage (e.g., bratwurst), twist casing ends in alternating directions at desired Sausage link length.

NOTE: If using natural casings, it is recommended to first soak them in cold water for 30 minutes to remove excess salt, then rinse several times by running cold water through the entire length of the casing. Refer to the instruction that came with casings.

CARE AND CLEANING



The following parts are dishwasher-safe, top rack only: Large Sausage Stuffer Tube, Small Sausage Stuffer Tube, and Sausage Stuffer Plate.





WARRANTY AND SERVICE

Length of Warranty:	KitchenAid Will Pay For:	KitchenAid Will Not Pay For:
Europe, Middle East and Africa: 5KSMSA Two years full warranty from date of purchase.	The replacement parts and repair labour costs to correct defects in materials or workmanship. Service must be provided by an Authorised KitchenAid Service Centre.	A. Repairs when Stand Mixer attachment is used for operations other than normal household food preparation. B. Damage resulting from accident, alterations, misuse, abuse, or installation/operation not in accordance with local electrical codes.

KITCHENAID DOES NOT ASSUME ANY RESPONSIBILITY FOR INDIRECT DAMAGES.

CUSTOMER SERVICE

For any questions, or to find the nearest Authorised KitchenAid Service Centre in your country, please find our contact details below.

Number for general questions:  00800 3810 4026

For more information, visit our website at:

www.KitchenAid.co.uk
www.KitchenAid.eu

PRODUCT REGISTRATION

Register your new KitchenAid appliance now: <http://www.kitchenaid.eu/register>

©2019 All rights reserved.

KITCHENAID and the design of the stand mixer are trademarks in the U.S. and elsewhere.

