

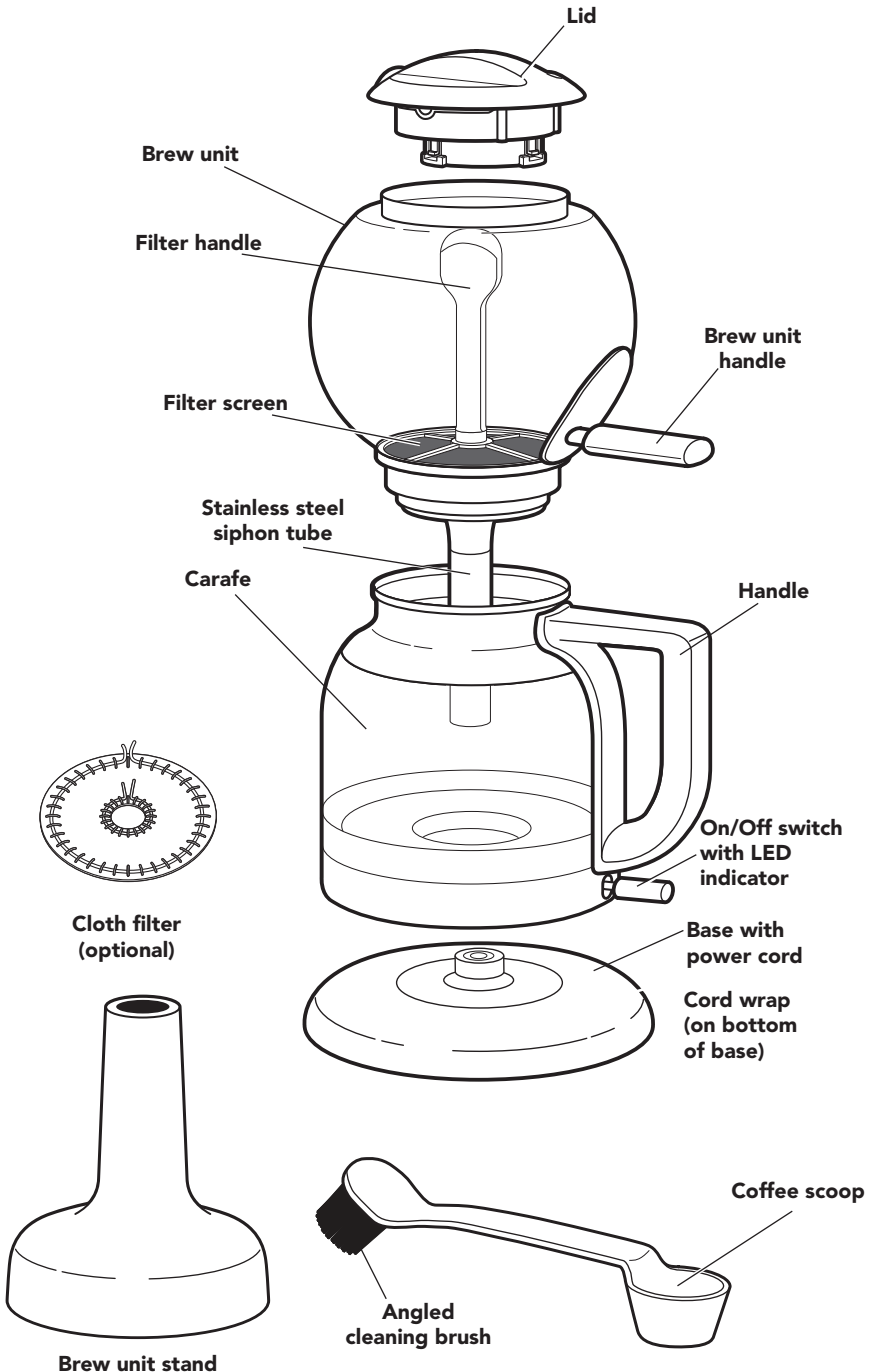
5KCM0812A
INSTRUCTIONS



KitchenAid

PARTS AND FEATURES

PARTS AND ACCESSORIES



SIPHON COFFEE BREWER SAFETY

Your safety and the safety of others are very important.

We have provided many important safety messages in this manual and on your appliance. Always read and obey all safety messages.



This is the safety alert symbol.

This symbol alerts you to potential hazards that can kill or hurt you and others.

All safety messages will follow the safety alert symbol and either the word “DANGER” or “WARNING.” These words mean:

 **DANGER**

You can be killed or seriously injured if you don't immediately follow instructions.

 **WARNING**

You can be killed or seriously injured if you don't follow instructions.

All safety messages will tell you what the potential hazard is, tell you how to reduce the chance of injury, and tell you what can happen if the instructions are not followed.

IMPORTANT SAFEGUARDS

When using electrical appliances, basic safety precautions should always be followed, including the following:

1. Read all instructions. Misuse of appliance may result in personal injury.
2. Do not touch hot surfaces. Use handles or knobs.
3. To protect against fire, electric shock and personal injury do not immerse cord, plugs, or appliance in water or other liquids.
4. This appliance may be used by children of at least 8 years of age as long as they are supervised and have been given instructions about using the appliance safely and are fully aware of the dangers involved. Cleaning and user maintenance shall not be made by children unless they are older than 8 and they are supervised by an adult.
5. Keep the appliance and its cord out of reach of children under 8 years of age.
6. Children should not use the device as a toy.
7. Unplug Siphon Coffee Brewer from outlet when not in use and before cleaning. Allow to cool before putting on or taking off parts.

SIPHON COFFEE BREWER SAFETY

8. Do not operate any appliance with a damaged cord or plug or after the appliance malfunctions or has been damaged in any manner. Return appliance to the nearest Authorised Service Facility for examination, repair or adjustment.
9. The use of accessory attachments not recommended by the appliance manufacturer may result in fire, electric shock, or personal injury.
10. Do not use outdoors.
11. Do not let cord hang over edge of table or counter, or touch hot surfaces.
12. Do not place on or near a radiator, hot gas or electric burner, in a heated oven, open flame, or similar.
13. Do not use appliance for other than intended use.
14. Do not use appliance without lid properly placed on container (carafe or brew unit).
15. Do not over fill the container (carafe).
16. The container (carafe or brew unit) is designed for use with this appliance. It must never be used on a range top or in a microwave oven.
17. Do not set a hot container (carafe or brew unit) on a wet or cold surface.
18. Do not use a cracked container (carafe or brew unit) or a container having a loose or weakened handle.
19. Do not clean container (carafe or brew unit) with abrasive cleaners, steel wool pads, or other abrasive material.

SAVE THESE INSTRUCTIONS

This product is designed for household use only.

SIPHON COFFEE BREWER SAFETY

ELECTRICAL REQUIREMENTS

⚠️ WARNING



Electrical Shock Hazard

Plug into a grounded outlet.

Do not remove ground prong.

Do not use an adapter.

Do not use an extension cord.

Failure to follow these instructions can result in death, fire, or electrical shock.

Volts: 220-240 VAC

Hertz: 50-60 Hz

Wattage: 1440 Watts

NOTE: If the plug does not fit in the outlet, contact a qualified electrician. Do not modify the plug in any way. Do not use an adapter.

Do not use an extension cord. If the power supply cord is too short, have a qualified electrician or serviceman install an outlet near the appliance.

NOTE: In accordance with guidelines from the medical device manufacturers, as with many products containing magnets, it is recommended that those with implantable pacemakers/defibrillators should use care with the Siphon Coffee Brewer and keep their device 30 cm (12 inches) away from the Siphon Coffee Brewer.

USING THE SIPHON COFFEE BREWER

HOW SIPHON COFFEE IS DIFFERENT

Siphon coffee brewing, also known as “vacuum” coffee brewing, uses vapour pressure to push hot water from the carafe into an upper brewing chamber. Freshly brewed coffee then pours back down into the carafe when brewing is complete.

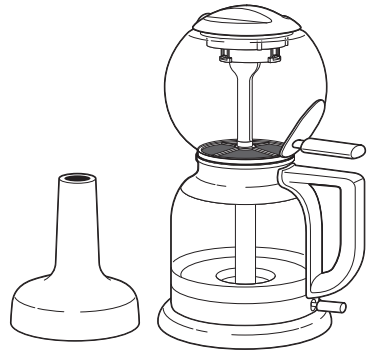
Siphon coffee brewing fully and evenly saturates the coffee grounds with hot water, bringing out the bright, intense flavours from your favourite ground coffee. The coffee’s aroma stays trapped inside the coffee Brewer rather than escaping into the air, resulting in clean, crisp, and vibrant tasting coffee that drip coffee Brewers can’t produce.

Traditional siphon coffee brewing

Siphon coffee brewing is a full-immersion craft brewing method done by hand, and is traditionally a complex, difficult process requiring constant attention, precise timing, and frequent temperature adjustments. Traditional siphon Brewers often require a burner or an open flame. Because of this complexity and inconvenience, coffee lovers often compromise and settle for the usual drip coffee Brewer instead.

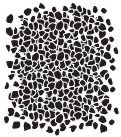
The KitchenAid Siphon Coffee Brewer

The KitchenAid Siphon Coffee Brewer brings together the incredible flavours of siphon coffee brewing with easy, safe operation and no open flame. With the simple flip of a switch, the Siphon Coffee Brewer automatically brews exceptionally clean and bright tasting coffee with no need for guesswork or adjustment. Simply fill the carafe with your desired amount of water, add your favourite ground coffee into the brew unit, and let the Siphon Coffee Brewer do all the work! With an exciting brewing technique that you can watch, you and your guests will love the brewing process as much as the coffee’s exceptional flavour.



COFFEE DOSAGE GUIDE

For best results, use a kitchen scale and the chart below when filling the brew unit with coffee grounds. As a baseline, use coffee ground medium-coarse (see picture to the left). Grind finer or coarser to taste.



CUPS*	WATER OZ.	GRIND	WATER GRAMS	COFFEE GRAMS	APPROX. # OF LEVEL SCOOPS
2	10	Medium-coarse (see example of grind size at left)	295.7	18.5	3
3	15		443.6	27.7	4.5
4	20		591.5	37	6.5
5	25		739	46.2	8
6	30		887	55.4	9.5
7	35		1035	64.7	11
8	40		1183	73.9	12.5

*Use the measurements on the side of your carafe.

USING THE SIPHON COFFEE BREWER

PREPARING THE SIPHON COFFEE BREWER FOR USE

⚠️ WARNING



Electrical Shock Hazard

- Plug into a grounded outlet.**
- Do not remove ground prong.**
- Do not use an adapter.**
- Do not use an extension cord.**
- Failure to follow these instructions can result in death, fire, or electrical shock.**

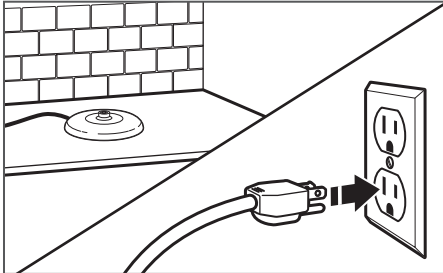
Before first use

Before using your Siphon Coffee Brewer for the first time, wash the carafe, brew unit, brew unit stand, filter, and lid in hot, soapy water, then rinse with clean water and dry. To avoid damage, do not fully immerse the carafe in water, and do not use abrasive cleaners or scouring pads.

NOTE: The entire Siphon Coffee Brewer is hand wash only. To avoid damage, do not wash any part of the carafe, brew unit, brew unit stand or the base with power cord in a dishwasher.

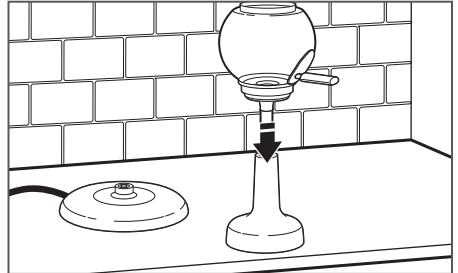
If using the optional cloth filter:

Boil the new cloth filter in fresh water for 5 minutes to pre-shrink before using for the first time. The cloth filter will continue to shrink slightly for the next few uses and will produce best quality brew from then on.



1

Place the base with power cord on a flat, sturdy surface and plug it into a grounded outlet. If desired, wrap excess cord around the cord holder on the bottom of the base.

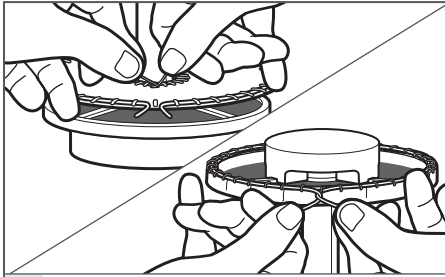


2

Place the brew unit stand on a flat, sturdy surface. Insert the stainless steel siphon tube into the brew unit stand.

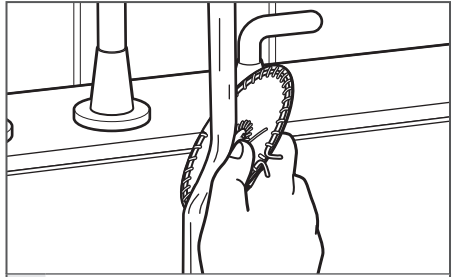
USING THE SIPHON COFFEE BREWER

USING THE CLOTH FILTER (OPTIONAL)



- 1** Wrap the cloth filter around the stainless steel filter disc, then use the drawstrings to cinch the centre and outer ties into place. Insert the filter disc in the brew unit as usual.

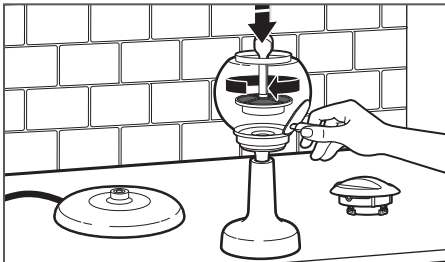
NOTE: Make sure to tie the drawstrings securely, but leave enough slack to allow for removal when you are finished brewing.



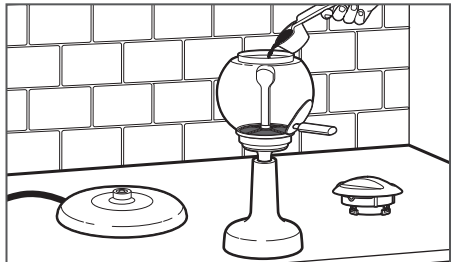
- 2** After brewing, untie the drawstrings, remove the cloth filter from the stainless steel filter disc, and carefully rinse in running tap water to remove all residue.

NOTE: It is natural that the cloth filter will stain. This is normal.

BREWING COFFEE



- 1** Keep the brew unit steady by grasping the brew unit handle, and use the coffee filter handle to place the coffee filter into the bottom of the brew unit. Turn the coffee filter handle clockwise until the coffee filter locks into place.



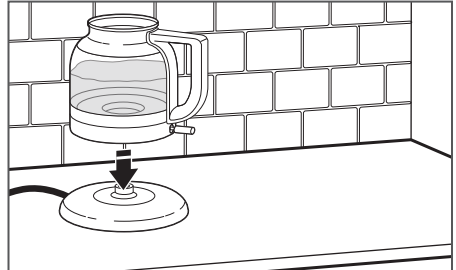
- 2** Scoop the desired amount of ground coffee into the brew unit using the coffee scoop; then, place the lid on the brew unit. See "Coffee Dosage Guide" on page 6 for more information.

USING THE SIPHON COFFEE BREWER

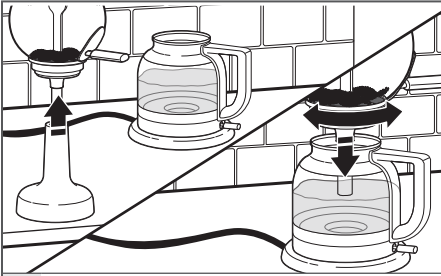


3 Fill the carafe with fresh, filtered water to the desired cup level as indicated on the sides of the carafe. To avoid spills on the countertop, do not overfill the carafe.

NOTE: Measurements on the sides of the carafe represent 148 ml (5 oz.) cups.

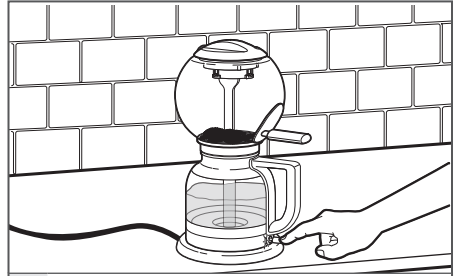


4 Place the carafe on the base.



5 Remove the brew unit from the brew unit stand and place it on the carafe with handle to the right or left of the carafe handle. Turn the brew unit handle until it aligns with the carafe handle and locks into place.

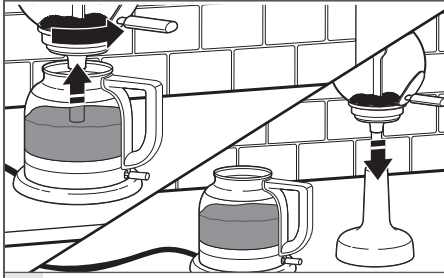
NOTE: The Siphon Coffee Brewer features a dual lock system that mechanically and magnetically locks the brew unit into place.



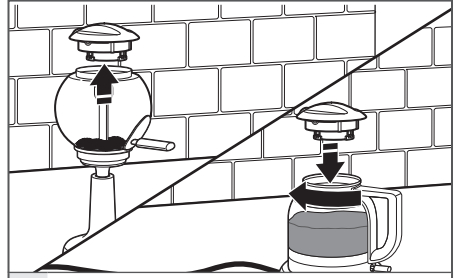
6 Press down on the ON/OFF switch to begin the brewing cycle. The LED indicator will glow and the water will begin to heat.

NOTE: The switch will automatically turn off during the brewing cycle. Do not remove the brew unit at this time, the cycle is not yet complete. Allow the coffee to finish pouring into the carafe.

USING THE SIPHON COFFEE BREWER



- 7** Once the brewed coffee has stopped pouring into the carafe, remove the brew unit from the carafe, and place it in the brew unit stand.



- 8** Remove the lid from the brew unit, place it on the carafe, and turn clockwise to lock it in place. Your coffee is now ready to be served.

NOTE: The amount of coffee brewed may be slightly less than the amount of water you put into the carafe, due to natural evaporation during the brewing process. This is normal.

IMPORTANT: For best flavour and quality, we recommend drinking within the first 30 minutes after brewing. To avoid damage to the brew unit, do not reheat already brewed coffee in the carafe.

CARE AND CLEANING

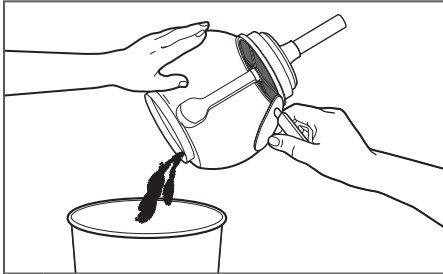
CLEANING THE SIPHON COFFEE BREWER AND ACCESSORIES

If using the optional cloth filter:

Rinse the filter with hot water after use. Squeeze out excess water, and hang up to dry thoroughly between uses.

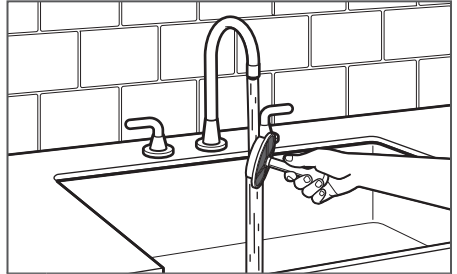
NOTE: To further sanitize occasionally, or as necessary - Boil the cloth filter for 5 minutes and let dry.

Replace the cloth filter when brew richness begins to decrease.



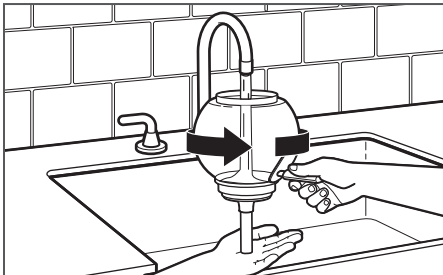
1

Allow the Siphon Coffee Brewer to cool. Then dump the brewed coffee grounds into a waste basket. Gently tap the brew unit with the palm of your hand to remove coffee grounds remaining on the sides of the brew unit.



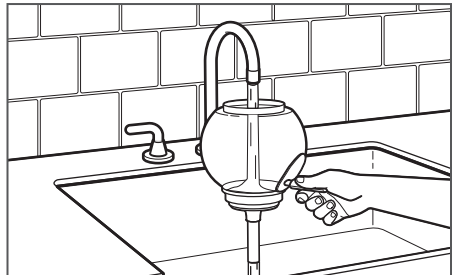
2

Turn the coffee filter handle counterclockwise to unlock and remove. Then, wash the coffee filter by running under warm water. Allow to air dry.



3

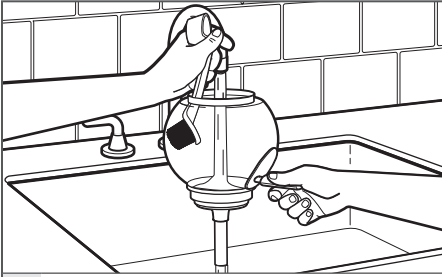
Cover the bottom of the stainless steel siphon tube with the palm of your hand. Fill the brew unit with hot tap water, moving it in a circular motion to rinse away remaining coffee grounds.



4

Hold the stainless steel siphon tube above a sink and remove the palm of your hand to empty the water and coffee grounds from the brew unit. Repeat steps 3 and 4 as needed.

CARE AND CLEANING



5

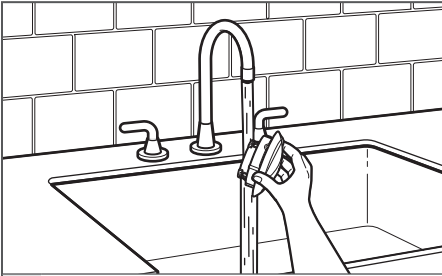
Use the angled brush and hot, soapy water to finish cleaning the brew unit; then, rinse with clean water. Allow to air dry with the lid removed, or dry with a soft towel.



6

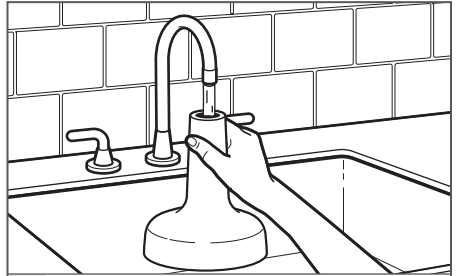
Use the angled brush and hot, soapy water to clean the carafe; then, rinse with clean water. Allow to air dry with the lid removed, or gently dry the inside with a soft towel.

IMPORTANT: To avoid damage, do not immerse the carafe in water.



7

Run water through the inside of the lid after every use. Prop the lid on its side to allow it to fully air dry.



8

Rinse the inside of the brew unit stand with water after every use. Allow to air dry.

TROUBLESHOOTING

⚠ WARNING



Electrical Shock Hazard

Plug into a grounded outlet.

Do not remove ground prong.

Do not use an adapter.

Do not use an extension cord.

Failure to follow these instructions can result in death, fire, or electrical shock.

1. If the LED light is not illuminated:
Check to see whether the Siphon Coffee Brewer is plugged into a grounded outlet. If it is, check the fuse or circuit breaker on the electrical circuit the Coffee Brewer is connected to and make sure the circuit is closed.

If the problem cannot be corrected:
See your warranty. Do not return the Siphon Coffee Brewer to the retailer; retailers do not provide service.

2. If water does not flow up into the brew unit from the carafe...
 - Check water was added to carafe.
 - Check the On/Off switch is turned in the on position with LED illuminated.
 - Check the power cord is plugged in.
 - Check the brew unit is properly seated to the carafe and the brew unit handle aligns with the carafe handle.
3. If coffee grounds found in carafe...
 - Check that the coffee filter is locked into place.
4. If coffee does not drop from the brew unit into the carafe...
 - Grind may be too fine which can clog the filter.
 - Check the brew unit is properly seated to the carafe and the brew unit handle aligns with the carafe handle.
5. If during brewing, coffee leaks out of the top of the brew unit...
 - Be certain not to overfill the carafe. Make sure not to fill past the "8 cups/max" line.
 - Do not reboil a pot of previously brewed coffee. Reboiling the coffee can cause the brew unit to overflow.

KitchenAid

© 2015. All rights reserved.
Specifications subject to change without notice.