



TECHE 3D180VR

APP

For iOS & Android

ABOUT

This document introduces how to configure & control TECHE 3D180VR camera on your smartphone.

Jinhe Rao

Life Pal Limited, the global partner of TECHE

1. Connections

There are three ways to connect with your TECHE 3D180VR camera.

a) **Camera Wi-Fi (Password: teche720)**

The camera has built-in Wi-Fi. Just search for 3D180VR in the Wi-Fi settings of your smartphone. Use password provided by us for the connection. Launch the app/software and you will see the camera's IP address appears in the camera list box.

b) **Intranet Router**

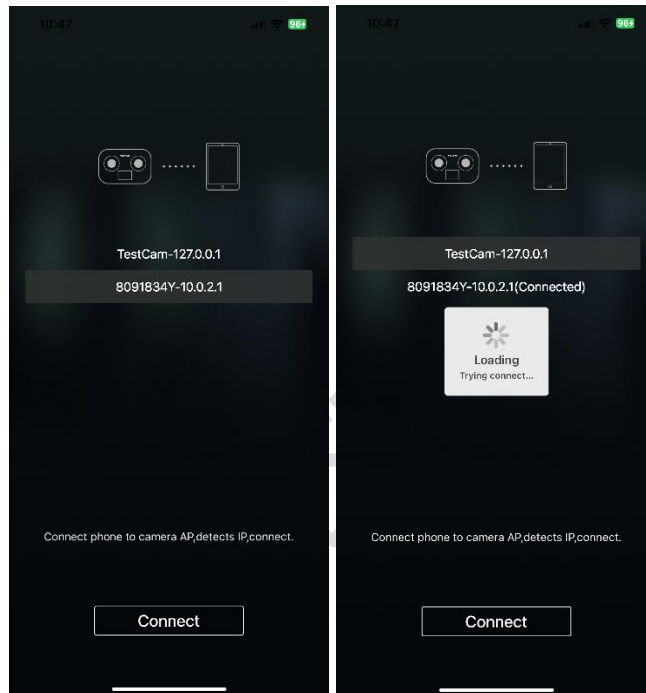
Make sure the camera and your PC are connected to the same intranet. In this case, just launch the software and you will see the camera's IP address in the list box.

c) **Direct Connection with a LAN Cable**

Use a LAN cable to connect the camera with your PC directly. In this way, you will need to change the computer's IP address to 10.0.1.xxx and the mask to 255.255.255.0. Leave all the others blank. The camera's fixed IP address is 10.0.1.1, so you can use any other one than 10.0.1.1

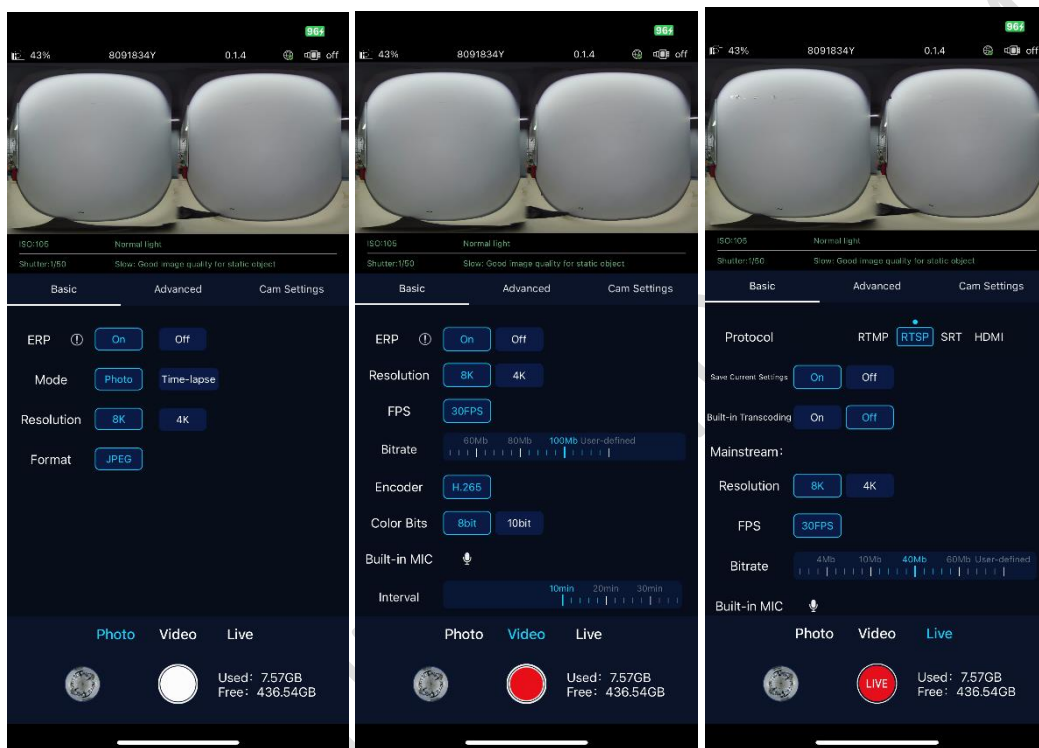
2. Running & Loading

Click the app icon to run the app & and then click the Connect icon at the bottom to load the camera contents. It can be downloaded [here](#).



3. Feature Layout

- a) There are two shooting modes available at the bottom of the app: Photo, Video & Live. Click to start and click again to stop
- b) At the upper section, it's the preview of the shooting, pre-stitched effect.
- c) At the middle section, it's for configuring the camera with different shooting values, basic & advanced options available.



4. Shooting Introductions

a. Photo

- 1) Photo Shooting: Single shot & Time-Lapse
- 2) ERP: If On, what you get is a unwrapped equirectangular image; If Off, what you will get is a raw fisheye image.
- 3) Photo Format: JPG
- 4) Resolution: You will have option for 4K & 8K if ERP is on, while only 8K is available if ERP is off.
- 5) Time-lapse: the shooting interval range is from 1s to 1,200s/shot. When it's activated, the camera will start to take photos automatically based on your interval time settings.

b. Video

- 1) ERP: If On, what you get is a unwrapped equirectangular video; If Off, what you will get is a raw fisheye video.
- 2) Resolution & Frame Rate: You will have option for 4K@30fps & 8K@30fps if ERP is on, while only 8K@fps is available if ERP is off.
- 3) Bitrate: You can select from 1mbps to 100mbps if ERP is on, while only 100mbps is available if ERP is off.
- 4) Built-in Mic: Choose to mute the built-in mic or not.
- 5) Interval: Set the footage length. You can select different time lengths for your footage, so it will be easier in post-production. You will have these options: 10min, 20min, 30min, 60min and full length.
- 6) Video Format: H.265
- 7) Color Depth: 8bit & 10bit (for H.265 only)

c. Live

- 1) Protocols: RTMP, RTSP, SRT and HDMI
- 2) Save Current Settings: Save your settings for next time use
- 3) Codec: H.265 & H.264
- 4) Live Mode: ERP is on in default and can't be changed
- 5) Resolution: 8K@20fps/30fps; 4K20fps/30fps
- 6) Bitrate: Select the video output bitrate from 1-100mbps based on the

bandwidth the camera is using.

- 7) Built-in Mic: Choose to mute the built-in mic or not.
- 8) RTMP: The camera will send the video to the streaming URL you enter, and the audience can watch the show via the address provided by the streaming platform you're using.
- 9) RTSP: If you select RTSP for streaming protocol, the camera will be assigned with three URLs for different watching the show. Which one to select depends how you connect the camera with the device you use to watch the show: Direct Connection, Intranet & Camera Wi-Fi. Just enter the related URL in the player of your device, like a VR headset, to watch the show.
- 10) SRT: The camera will send the video to the streaming URL you enter, and the audience can watch the show via the address provided by the streaming platform you're using. ***SRT protocol has the lowest latency for live streaming, and it's recommended for all.***
- 11) Transcoding: When enabled, you can set up two streaming URLs (Main & Aux) with different resolutions, so the end users will have the best watching experience on different devices.
- 12) SRT Protocol Settings: When selected, the streaming URL will show as below:
If it's p2p, you can enter the default url: "srt://0.0.0.0:10000?mode=listener
The IP can't be changed, but the port can be changed to any valid one.

If you're sending the feed to a streaming server, the URL format will be like this "srt://192.168.14.176:10080?streamid=#!::h=live/xf,latency=0,m=publish".
This URL is for reference only.
- 13) HDMI: If you connect the camera to a terminal device via a DHMI cable, you can select HDMI as the streaming protocol. When it's selected, you can preview the live show at 2K (2:1/16:9) or 4K(2:1/16:9).

5. Camera Configurations

Exposure Settings: Basic/Advanced

a. Basic Settings

Brightness: Ten tiers are available to change the brightness.

Anti-Glittering: To optimize the glittering impact.

Dance Mode: For shooting the moving object. It will have a similar effect as increasing the shutter speed.

b. Advanced Settings

Exposure Mode: Auto/ISO Priority/Shutter Priority/Manual

EV: You can change from -5 to +5 for reduce/increase the image brightness.

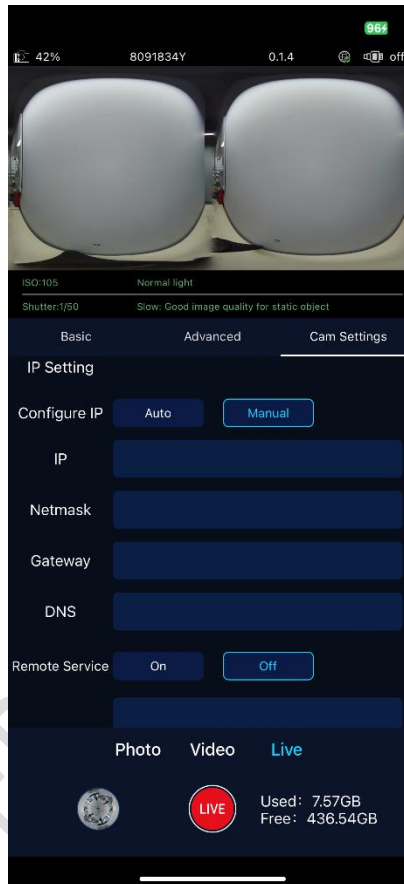
ISO Limit: 100 to 1600

Shutter Limit: 1/30 to 1/1800

White Balance: You can select different light modes or define it yourself.

6. Camera IP Settings

You can assign a static IP address for your camera. The camera's default service port is 8080. You can change the port number, but do not use 1935 and 8554.



7. Footage Replay

Click the image icon at the bottom left corner to enter the camera storage to preview what you've just taken. You can delete any footage you don't like to save the space by select the Edit icon at the top right corner.

WWW.LIFEPALSTORE.COM

Contact Us

Website:

www.lifepalstore.com

Life Pal Limited
610 Nathan Road
Rooms 1318-19, Hollywood Plaza
Mongkok, Kowloon
Hong Kong SAR, China

Tel: +852 6061 8656; Email: support@lifepalstore.com

Shanghai Qianshou Network Technology Co., Ltd.
No 800 Naxian Road
Room 401, Building 1
Pudong New Area, Shanghai 201210
China

Tel: +86 186 2158 7850; Email: joe@qsvrtech.com