



Measuring Form

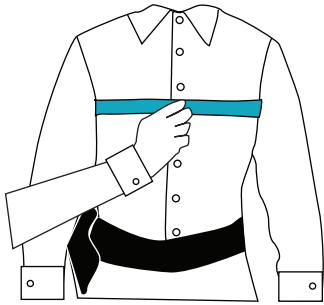
Uniform Shirt Vest Carrier

U.S. Armor Corporation
 10715 Bloomfield Avenue
 Santa Fe Springs, CA 90670
 PH: (562) 207-4240
 FX: (562) 207-4238
 ordersubmittal@usarmor.com

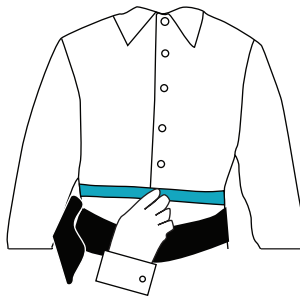
INSTRUCTIONS: In order to ensure a proper fit, please read ALL instructions before starting the measuring process. Correct measurements are the responsibility of the customer. Empty all shirt pockets and stand or sit comfortably when being measured. Do not watch the person doing the measuring. Please **DO NOT** "slouch", "suck in", or "stand tall." Stand relaxed and look straight ahead. For any questions, please call U.S. Armor Toll free: **(800) 443-9798**

Date:	Agency/Duty Location:	Customer Name:
Address:		PO#:
		Business Phone: Cell:
Height:	Weight:	Email:
Quantity:	Style:	Color:

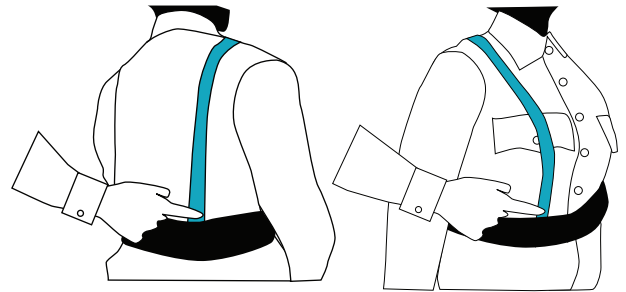
STEP 1: Chest = _____ in **STEP 2:** Waist = _____ in **STEP 3:** Belt to Belt = _____ in



With arms at sides, measure at nipple height/widest point of chest.

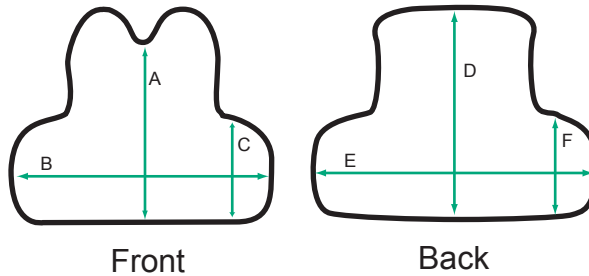


At navel height, measure around the waist/stomach. **DO NOT INHALE.**



Measure from top of gun belt in back, over the center of the shoulder, down to the top of the gun belt in front.

STEP 4:
 Measurement of ballistic panels.
 For **U.S. Armor** or non-U.S. Armor ballistic panels please complete the following measurement form to ensure a proper fit for your current ballistic panels. **(Front/Back)**



Front: Back:
 A: _____ in D: _____ in
 B: _____ in E: _____ in
 C: _____ in F: _____ in

Special Contract: _____ (WSCA, GSA, etc.)

Factory Use Only:

Comments:

S/O #: _____

Date: _____

Orders will not be accepted without this information.

Measured by = _____ Date: _____

(Please Print)