

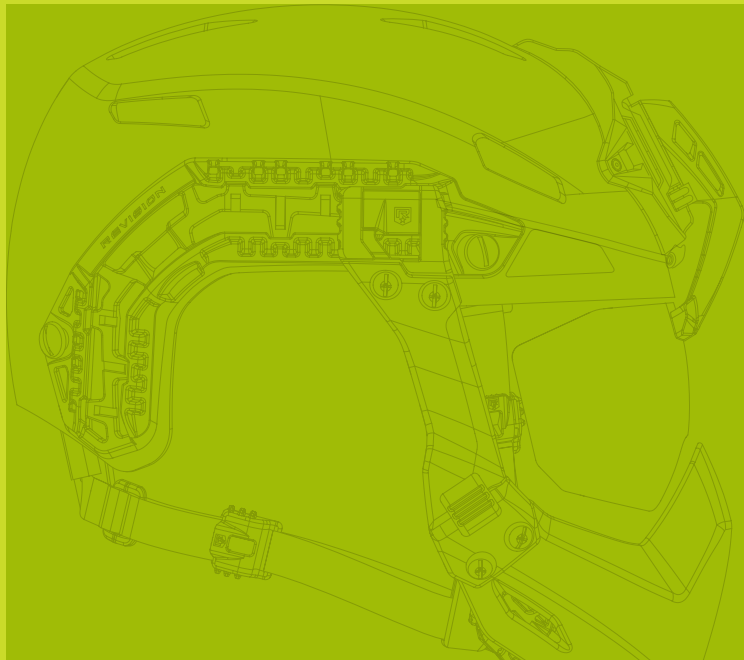
FULL SPECTRUM HELMET SYSTEM

BATLSKIN
caiman™

**BUMP & BALLISTIC
HELMET SYSTEM**



**WATCH
VIDEO**



CAIMAN HELMET SYSTEM

INTRODUCING YOUR NEW HELMET SYSTEM FROM REVISION.

This helmet is **built ready**. Put it on, wear it, make it yours.

SIZING CHART

	LENGTH	WIDTH	CIRCUMFERENCE
SMALL	7 - 7 ¾ inches	5 ½ - 6 inches	20 ¾ - 22 inches
MEDIUM	7 ½ - 8 inches	6 - 6 ½ inches	22 - 22 ¾ inches
LARGE	7 ¾ - 8 ¼ inches	6 - 6 ¾ inches	22 ¾ - 23 ½ inches
X-LARGE	8 - 8 ½ inches	6 ¼ - 7 inches	23 ½ - 24 ½ inches
XX-LARGE	8 ¼ - 8 ¾ inches	6 ½ - 7 inches	24 ½ - 25 ½ inches

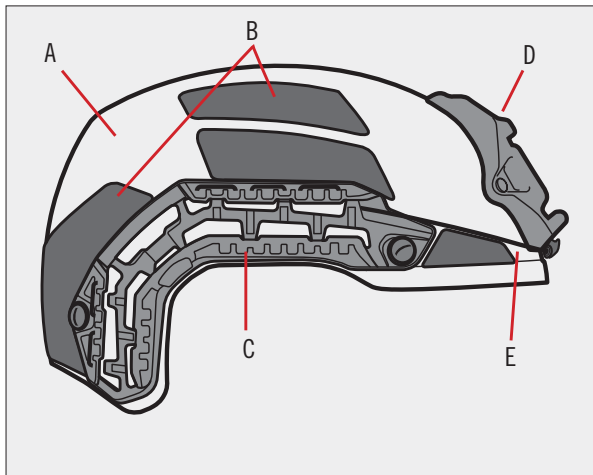
Front of helmet should sit approximately ½" above eyebrows. For proper helmet positioning, the upper rail channel should be angled between zero degrees horizontal, and three degrees backward tilt. If the helmet indicated by this sizing chart is still too loose, try a smaller size.



PLEASE SCAN THIS CODE FOR IMPORTANT WARNINGS & WARRANTY INFORMATION.

BALLISTIC HELMET

- A - Ballistic Shell
- B - External Velcro
- C - Side Rails
- D - Wilcox L4 Shroud
- E - NGV Bungees

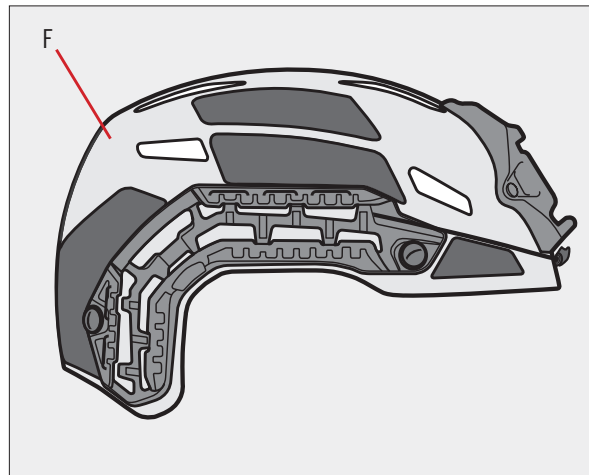


4

NON-BALLISTIC HELMET

- F - Non-Ballistic Shell

All other components are interchangeable with Ballistic Shell

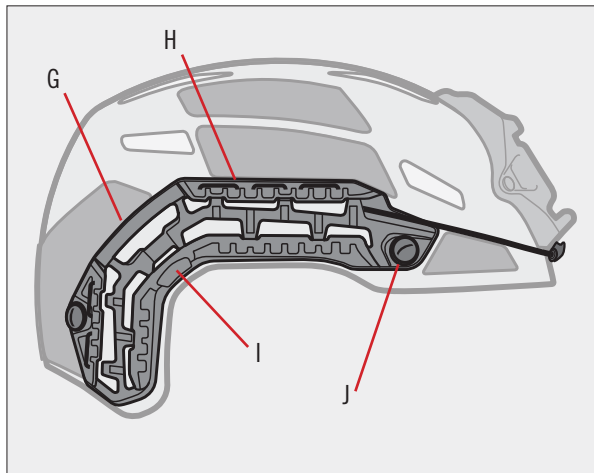


5

RAILS

Dovetail Rails are compatible with all legacy accessory attachments.

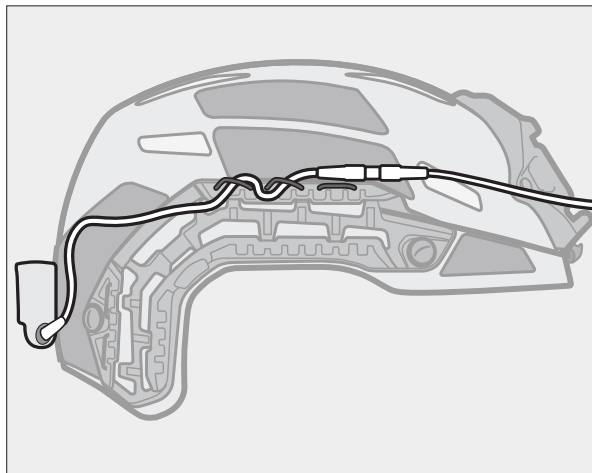
- G - Rear Strap Attachment
- H - Cable Management Bungees
- I - O2 Mask Clip Receiver
- J - Ballistic Screws



6

CABLE MANAGEMENT

Use Cable Management Bungees to secure power or data cables.



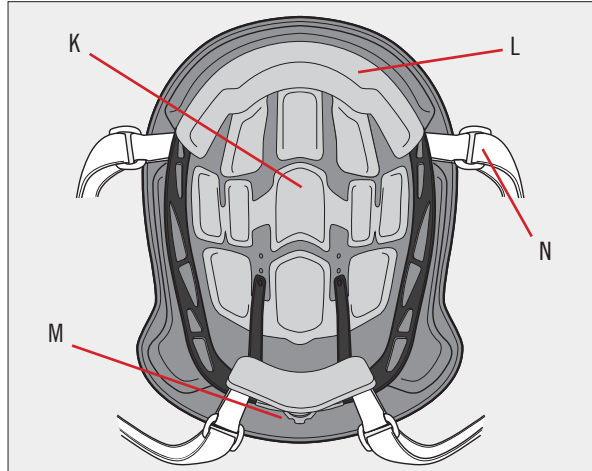
7

LINER

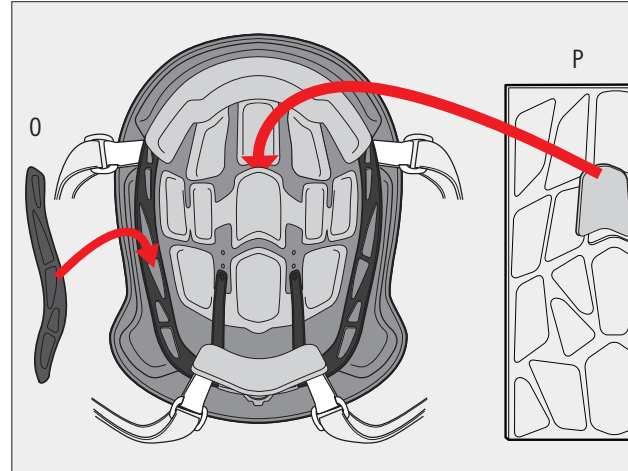
INCLUDED

- K - EPP Impact Liner
- L - Comfort Pad Set
- M - Dial Fitband
- N - Harness

Fitband Tightness: On the rear of the Fitband, turn the dial clockwise to tighten or counter clockwise to loosen the Fitband around head.



8



9

ADJUSTING FOR COMFORT & FIT

O - Fitband Side Pads
Attach to Fitband for added comfort.

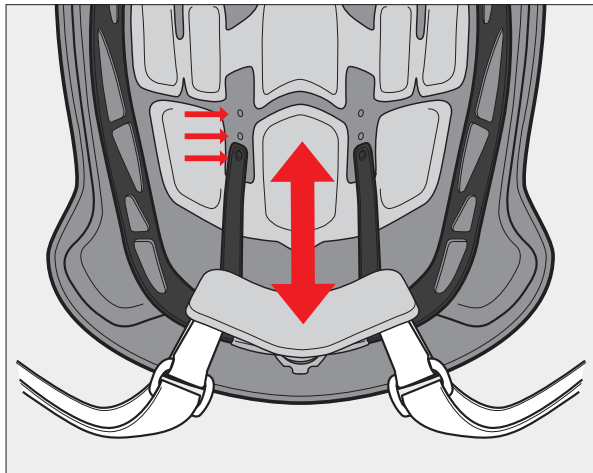
P - Shim Sheet
Place sections behind comfort pads to customize fit.

FITBAND ADJUSTMENT

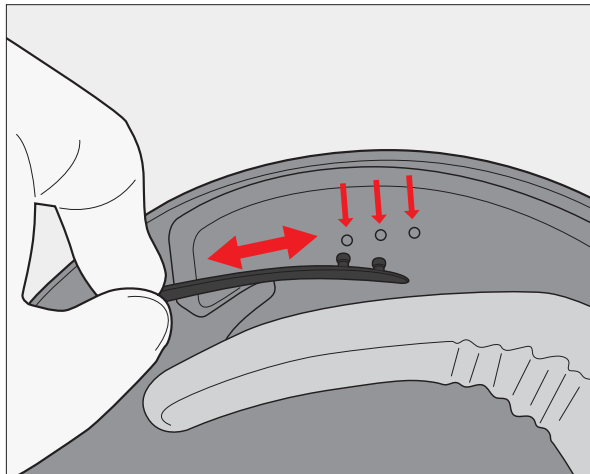
WATCH INSTRUCTIONAL VIDEO

The Fitband position can be customized to your preference.

Nape height can be set at 3 different positions.



10



11

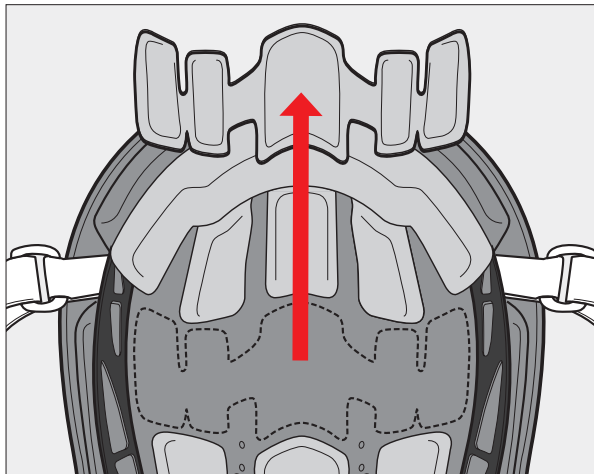
The front Fitband arms can be set at 2 different positions to accommodate forehead width.

FITBAND COMMS INTEGRATION

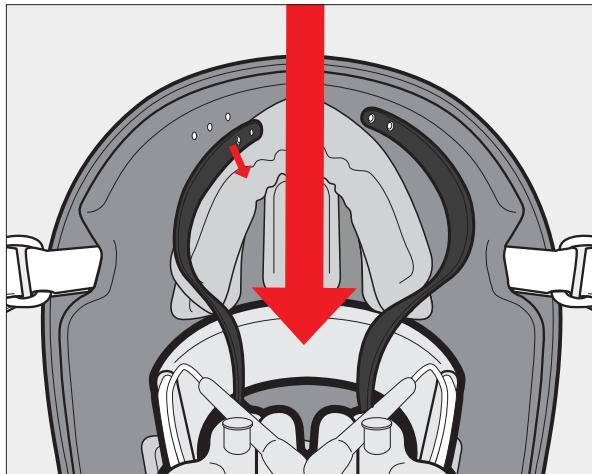
WATCH INSTRUCTIONAL VIDEO

The Liner System is designed to accommodate overhead comms pads.

First remove center comfort pad.



12



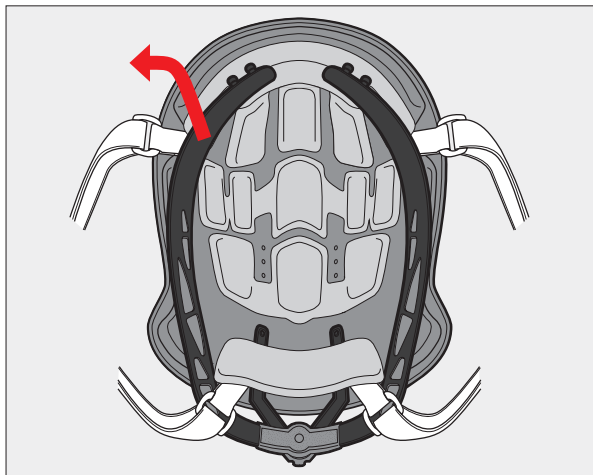
13

Next, detach Fitband arm from the front of the helmet. Rotate the comms into the helmet. Reposition Fitband arms inside comms headband and reattach.

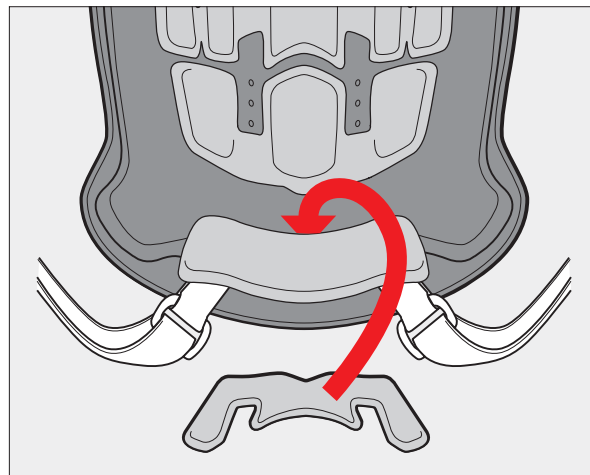
FITBAND REMOVAL

WATCH INSTRUCTIONAL VIDEO

Detach and remove Fitband –
the harness functions independently.



14



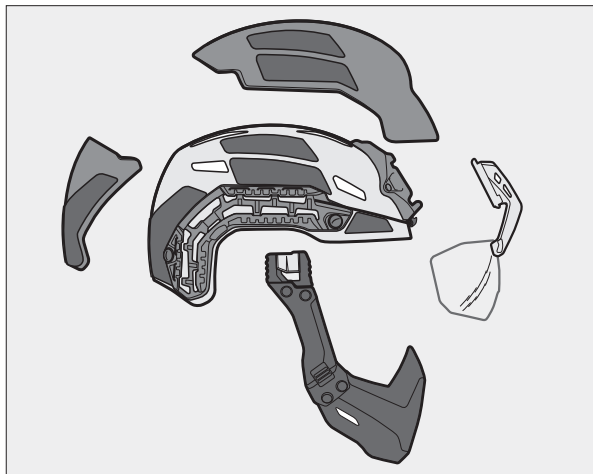
15

Attach lower rear comfort pad
for added stability.

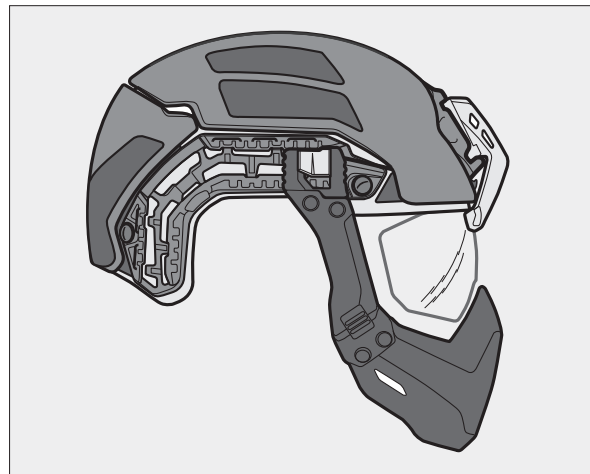
CAIMAN ACCESSORIES

Revision's Caiman Helmet System includes optional Visors and Mandibles, both Ballistic and Non-Ballistic. These components are interchangeable between the Ballistic and Non-Ballistic Helmets.

The 2-Part Applique can be added to the Non-Ballistic Helmet for ballistic protection.



16

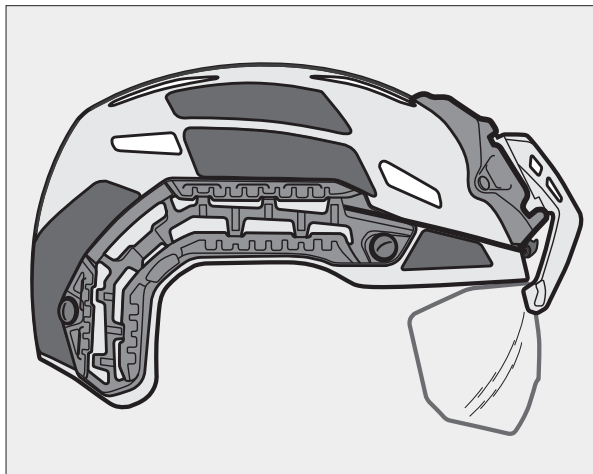


17

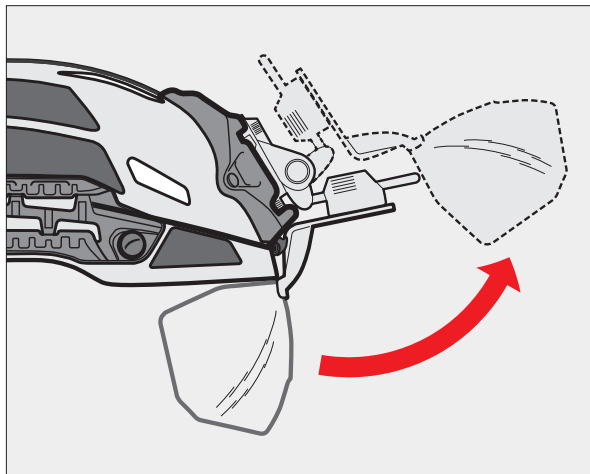
Assembled view.

OPTIONAL COMPONENTS — **FIXED ARM VISOR**

The Fixed Arm Visor attaches to the Wilcox L4 Shroud.



18



19

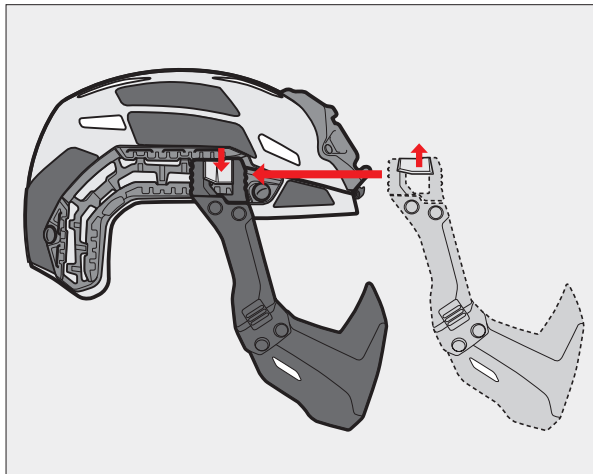
NVG ARM VISOR

The NVG Arm Visor attaches to the Wilcox L4 G24 Mount.

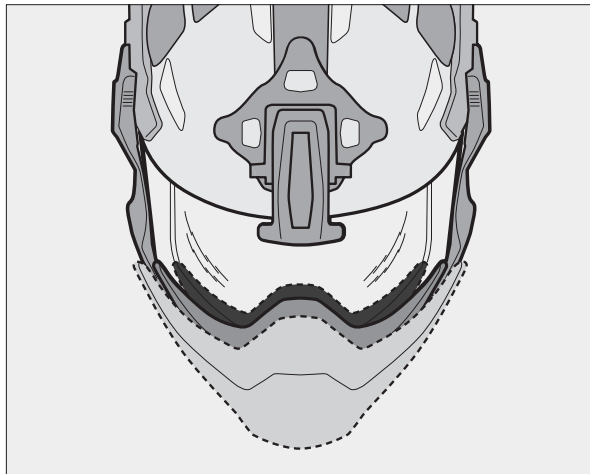
WILCOX L4 G24 MOUNT NOT INCLUDED.

OPTIONAL COMPONENTS — MANDIBLE GUARD

Slide into rail, close latch.



20



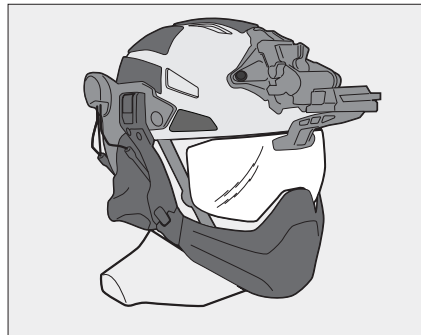
21

3 sizes will fit all helmets.

CARE & MAINTENANCE

Wash the helmet and components in warm soapy water and rinse thoroughly - let air dry.

If any component of the helmet system is cracked, dented, worn, frayed or otherwise damaged, replace component.



ARC RAIL PELTORS WITH CRYE AIRFRAME ADAPTORS NOT INCLUDED.

REPLACEMENT PART NUMBERS

ITEM	PART NUMBER
IMPACT LINER	4-0530/1-5030 to 34
RETENTION SYSTEM, RIGHT EYE	4-0530/1-5035 to 39
RETENTION SYSTEM, LEFT EYE	4-0530/1-5040 to 44
COMFORT PAD SET	4-0530/1-5045 to 49
FITBAND	4-0530/1-5050 to 54
ACCESSORY RAIL KIT	4-0530/1-5055
WILCOX MOUNT	4-0530/1-5095

Replacement parts must be ordered according to required size and color.

REVISIONMILITARY.COM

© 2017 REVISION MILITARY INC. BATLSKIN® AND CAIMAN™ ARE TRADEMARKS OWNED BY REVISION MILITARY S.A.R.L. AND USED UNDER LICENSE BY REVISION MILITARY INC. REVISION® IS A TRADEMARK OF REVISION MILITARY. 5-0008-0026 AUG/2017