

TUCROMA CHAIR



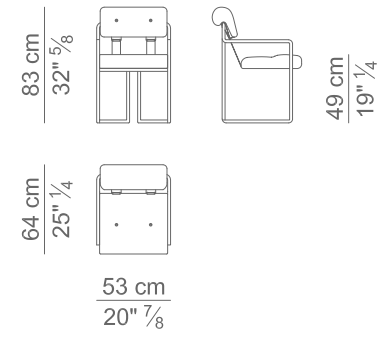
4MARIANI

MASTERPIECE

TUCROMA CHAIR,
THE ICON OF
DESIGN HISTORY
SINCE 1971.

Presentata nel lontano 1971, la sedia Tucroma a più di cinquant'anni di distanza continua a essere simbolo di modernità della collezione 4Mariani. Disegnata dall'architetto Guido Faleschini diventa subito un'icona per le sue forme lineari ed innovative al tempo stesso.

Presented in the distant 1971, after more than fifty years Tucroma chair is still the symbol of modernity of the 4Mariani home collection. Design by Architect Guido Faleschini becomes instantly an icon - for its linear and at the same time innovative shape.





Il suo design rivoluzionario decreta il suo successo allora come adesso e la sua estetica fa da trait d'union tra la tradizione delle lavorazioni di pelle e cuoio e l'esigenza di modernità. Oltre alla sedia la collezione comprende anche il tavolo, le madie, la poltrona e il letto tutti accomunati da un comfort e stile unico.

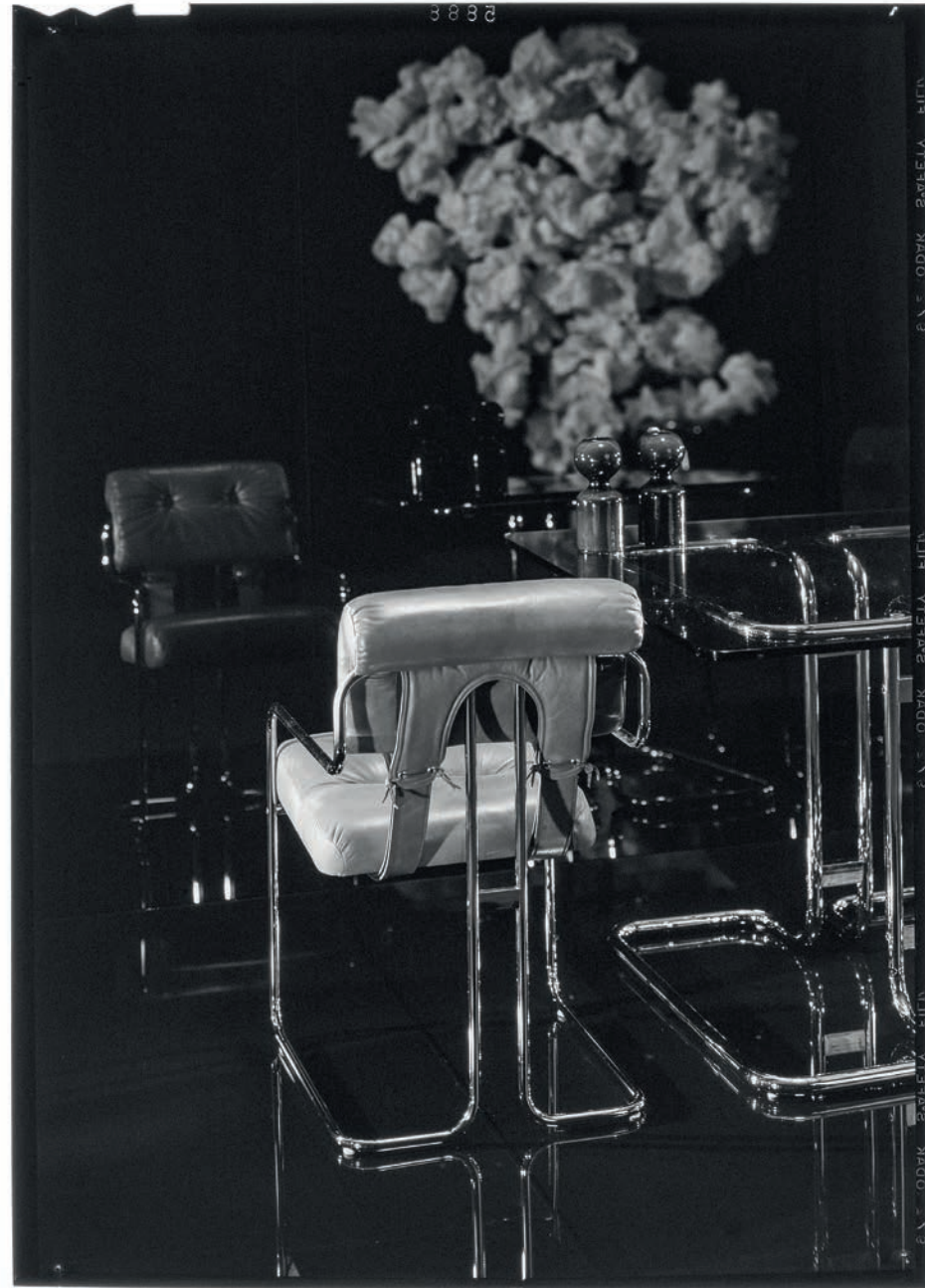
Its revolutionary design decrees its success, then as today, was due to aesthetics that converges the tradition of leather and saddle leather manufacturing and the need for modernity. Besides the chair, the collection also includes table, cabinets, armchair and bed, which have in common the fact an unique comfort and style.



BORN FOR THE HOME



MASTERPIECE



VERY COOL FOR OFFICE



Tucroma è una sedia di grande eleganza, nata sotto il segno della modernità equilibrata che le consente di dialogare con stili e ambienti professionali che residenziali.

Tucroma is an extremely elegant chair of a balanced modernity that enables it to interact with diverse styles and professional nor in residential environments.



MASTERPIECE

TUCROMA CHAIR
DRESSING
NEW FINISHINGS
CHROME COLOURS

CLASSIC CHROME STRUCTURE



RED CHROME STRUCTURE



BRONZE CHROME STRUCTURE



BLACK CHROME STRUCTURE

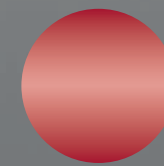


GOLD CHROME STRUCTURE



Per i suoi 50 anni i4Mariani celebrano la riedizione della sedia Tucroma in 5 nuove finiture. Mantendo la luminosità del cromo la struttura in tubolare d'acciaio cromato si arricchisce di nuove proposte: rosso, oro, argento, nero e bronzo.

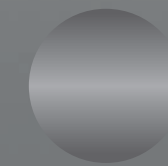
For its 50th anniversary i4Mariani celebrates the re-edition of the Tucroma chair in 5 new finishes. While maintaining the brightness of the chrome, the chromed tubular steel structure is enriched with new proposals: red, gold, silver, black and bronze.



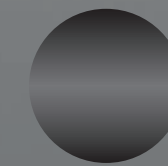
Red Chrome



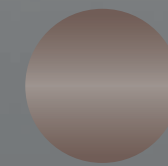
Gold Chrome



Classic Chrome



Black Chrome



Bronze Chrome



TUCROMA CHAIR,
CHARACTER DESIGN
FOR TRUE
VINTAGE LOVERS.





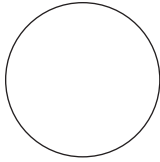
Il rivestimento è calzato su una struttura in acciaio e offre sia la versione monocolore, sia la possibilità di abbinare tonalità a contrasto tra schienale e seduta in pelle o tessuto e cinghie in cuoio.

The cover is fitted on a steel structure and offers both the one-color version and the possibility of combining contrasting shades between the backrest and seat in leather or fabric and leather straps.





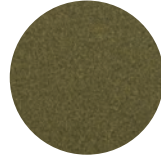
COLOURS STRUCTURE



RAL Colours



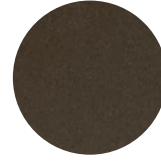
Textured metallic
Black



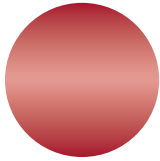
Textured metallic
Green



Textured metallic
White



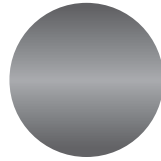
Textured metallic
Brown



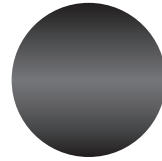
Red Chrome



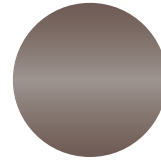
Gold Chrome



Classic Chrome



Black Chrome



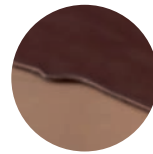
Bronze Chrome

LEATHER SEATING



more than 100
typologies of leathers

SADDLE LEATHER BELT



60 typologies of
saddle leathers