



FERRET PLUS[®]

Multipurpose Wireless Inspection Camera

User guide and FAQs



WORK SAFER. WORK SMARTER. SMART TOOL. SMART CHOICE.

Visual inspections

Cable installations

Maintenance

Welcome to the Ferret Community!
Thank you for choosing the Ferret Plus camera.

Designed and Engineered in New Zealand:

Ferret Tools Limited

Ferret Tools, Inc.

Patent Pending in the USA

Model CFWF50P - Ferret Plus

Version 1.4 © 2020

1 year Manufacturer's Warranty

Learn more at www.ferrettools.com

Made in China



FERRET PLUS FEATURES:



**Built-in WiFi hotspot,
wireless & rechargeable**



**Free and easy
to use App**



720p HD Streaming



**Adjustable bright
white LEDs**



Digital zoom function



**NEW Built-in
(on board) memory**



**NEW Non-contact
voltage detector**



**NEW App controlled
variable focus**



NEW Super fast charge



**NEW Ferret always up
viewing mode**

The **Ferret Plus** brings you the ultimate innovation in inspection tool technology. Perfect for someone who loves having the latest technology with all the bells & whistles including award-winning features to help work easier, faster & safer.

Ferret Tools: *Creating the future with new thinking and innovation in smart inspection camera technology for Trades & DIY.*

Discover the full Ferret Tools product range at www.ferrettools.com

FERRET PLUS SPECIFICATIONS

Model	CFWF50P
Dimensions	3 ½" long x 1 ¼" wide (80mm x 32mm)
Weight	1 ½ ounces (33g)
Camera Resolution	720p HD
Wireless Range	Up to 50' (15m) line of sight
Operating Time	Up to 90 minutes (LEDs on medium brightness setting)
Charge Up Time	~80 minutes (95% charged in 60 minutes)
Frequency	2.4GHz
Operating Voltage	5V DC
Operating Temperature	32°F to 95°F (0°C to 35°C)
Storage Temperature	-4°F to 113°F (-20°C to 45°C)
Non contact voltage detector sensor range	50V-1000V AC (approx.)

For the full product manual, please refer to www.ferrettools.com/support

FERRET PLUS KIT INCLUDES:



Padded
EVA Case



Ferret Plus IP67 rated
camera with back cap
screwed on



Flexible gooseneck
& short rod



Strong hook, magnet
& thread adaptors



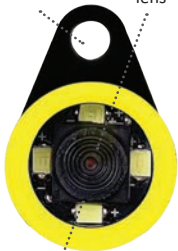
NEW
Right angle adaptor

FEATURES OF YOUR FERRET PLUS CAMERA

Front View

Screw in Ferret accessories

Camera lens



Adjustable bright white LEDs

Rear View

Power / Charging Indication LED

Connect to a rod or pole and / or gooseneck



Power switch

USB-C Charging socket



Camera is waterproof only when the back cap is screwed on

START USING YOUR FERRET PLUS



1 Download the Free Ferret App



Scan the QR Code or search for “Ferret Tools”



Requires iOS
V8.0 or later



Requires Android
V6.0 or later

NOTE: During installation or first use of the app you must give access to the phone or tablet's photo gallery to allow you to save photos and video footage.

2 Connect to your Ferret Camera

Turn on your Ferret camera. The camera power switch is at the back of the camera under the back cap. The camera will take about 2 seconds to boot and power on.

NOTE: The camera is IP67 rated only when the back cap is in place.



On your phone or tablet, turn on WiFi and search for the **Ferret-Plus-XXXX SSID** in the WiFi list. The Ferret camera has a built in WiFi hotspot, so no other WiFi network is needed.

NOTE: The camera will not link via Bluetooth – it is WiFi only.

3 Enjoy using your Ferret Camera and start saving time & money, working safer & smarter.

FERRET TOOLS APP

Easy to use App
Free on iOS and Android



Your Ferret Tools App has the following buttons:

Help
Screen



Capture
photos & videos



LED Brightness
Adjustment



Full Screen
Mode



Settings
Screen



Photo & video
Gallery



Auto focus /
Manual focus

Battery
Capacity
Indicator



LED BRIGHTNESS ADJUSTMENT

The LED brightness of your Ferret camera can be adjusted in 2 ways:

1. Tap the LED Brightness Adjustment button to change brightness to one of the three settings:



OFF



NORMAL



FULL

2. Press and hold the LED Brightness Adjustment button. A slider appears below the button which you can slide up or down to adjust LED brightness.

DIGITAL ZOOM

Use 2 fingers to use the digital zoom to bring your image closer.



AUTO FOCUS / MANUAL FOCUS FEATURE



Auto focus button - This allows you to tap an area of your display and the camera will focus on that area.



Manual focus button - This allows you to adjust the focus with a slider for detailed close-up viewing. Tap the Auto focus button and the slider will appear.



Manual focus
slider

LED brightness
slider

GALLERY / EXPORTING IMAGES & VIDEOS



The Ferret Plus provides separate galleries for the images and videos captured on the Ferret SD memory and your smart device.

Separate folders are created for Ferret Plus (smart device memory) and Ferret Plus SD in your **smart device** gallery. You can access or export your Ferret camera photos and videos directly from your smart device gallery.



Register with www.my.ferrettools.com to see subscription based cloud storage and warranty options. See registration card inside your Ferret kit for details.

APP SETTINGS



To access Settings, tap the Settings button.

Note: “Firmware Update” will only appear if a firmware update is available.



The Settings screen allows you to do the following:

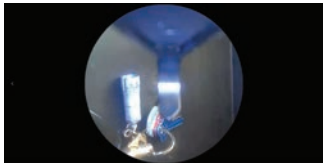
1. Change camera resolution from 720p to 360p, if lower resolution is required.
2. Set camera and video buttons to appear on the left or right of the main screen in the Ferret Tools App, for easier one handed operation.
3. Select JPG or PNG image format (Android devices only).
4. Change to a different WiFi channel if interference from other devices is preventing your Ferret camera from connecting to your App. (The recommended or default setting is Auto).

APP SETTINGS

5. Change the Display Mode from Normal (picture orientation reflects camera orientation) to an Always Up Mode – either Round or Full Screen. In Always Up mode, the picture orientation remains the right way up on the smart device display, regardless of the camera's orientation.

6. Select the Storage Location for the images and videos captured by the Ferret Plus – Smart Device (your phone or tablet), Ferret Plus (onboard memory) or Both. Select Ferret Plus or Both if you are inspecting inside pipes or ducting or underground or in situations where you may lose WiFi connectivity to your smart device.

7. Change alarm settings for the Non Contact Voltage Detector.



Always up round mode enabled



Non contact voltage detector visual alarm

FAQs

I can't connect or see the camera when I search on Bluetooth?

The Ferret camera has a built in WiFi hotspot. No other network is needed, and the camera does not connect via Bluetooth.

Can I use the camera underground, underwater or inside a conduit?

The Ferret Plus can be configured to record video to an onboard SD card, which will allow it to record video even when the WiFi connection drops out. Other Ferret cameras will not work underground, underwater or inside a metallic conduit as these scenarios will block the WiFi signal.

How long can I use my Ferret before recharging the battery?

Your Ferret will give you up to 90 minutes of use, with the LEDs on normal brightness, before it needs recharging.

I can't connect to WiFi or the WiFi won't stay connected on my Android?

Some Androids don't understand why you want to connect to a WiFi network without Internet. If a warning alert is displayed, check the box to not ask/show again and click OK/Yes.

FAQs

What does the rear LED indicate? The rear LED indicates:

RED = Charging, OFF = Fully Charged, WHITE = Camera ON

I can connect to the WiFi, but it won't show an image in the App.

Go to Settings -> Data usage -> Cellular data usage and scroll down to find and select the Ferret App. Turn off Background data to prevent the App trying to use cellular data.

When I try to download the App it asks for a password - why?

The Ferret App is free – it will never ask for a password or a code. Your phone sometimes will ask for a password due to your App Store not having a payment method.

Why does my Firmware Update not progress, it stays on 0% progress?

Please try placing your phone into Airplane or Flight mode, turn your phone's WiFi back on (while staying in Airplane mode), restart your Ferret App and Ferret camera, and try the firmware update again.

If your question isn't covered by the FAQs, please refer to www.ferrettools.com/support or email us at support@ferrettools.com



FERRET WARRANTY

**Your FERRET comes with a
12 month replacement warranty.**

**Extend your warranty at
www.my.ferrettools.com**



In the unlikely event that your FERRET develops a fault within 12 months of purchase, please email support@ferrettools.com, or simply return it your place of purchase with proof of purchase.

Failure due to physical damage, misuse, neglect, improper use or moisture is not covered. The camera has no user serviceable parts inside. Disassembly will void the warranty.

Important Information – Li-Ion Batteries

The Ferret camera contains a Li-Ion battery. For optimal battery life, do not store the camera while the battery is flat, do not store the camera in temperatures of over 35°C (95°F) and if the camera is not being used, top up the charge every 6 months.



CAUTION

This equipment has been tested and found to comply with the limits for a Class B digital device, pursuant to part 15 of the FCC rules. These limits are designed to provide reasonable protection against harmful interference in a residential installation. This equipment generates uses and can radiate radio frequency energy and, if not installed and used in accordance with the instructions, may cause harmful interference to radio communications. However, there is no guarantee that interference will not occur in a particular installation. If this equipment does cause harmful interference to radio or television reception, which can be determined by turning the equipment off and on, the user is encouraged to try to correct the interference by one or more of the following measures:

- Reorient or relocate the receiving antenna.
- Increase the separation between the equipment and receiver.
- Connect the equipment into an outlet on a circuit different from that to which the receiver is connected.
- Consult the dealer or an experienced radio/TV technician for help.

This device complies with part 15 of the FCC rules. Operation is subject to the following two conditions: (1) This device may not cause harmful interference, and (2) this device must accept any interference received, including interference that may cause undesired operation.

Any Changes or modifications not expressly approved by the party responsible for compliance could void the user's authority to operate the equipment.

RF Exposure

The equipment complies with FCC radiation exposure limits set forth for an uncontrolled environment. This device should be installed and operated with minimum distance 0mm between the radiator & your body.