

# Cal. VK67A

$\phi$  30.80 mm

H 5.10 mm

Item	Version No.
Specification - 1	Version 2
Specification - 2	Version 1
Appearance	Version 5
Casing	Version 4
Hand Fitting	Version 4
Hand Setting Stem	Version 2
Dial	Version 2
Assembly Plan - 1	Version 4
Assembly Plan - 2	Version 4
Hands	Version 1



## MOVEMENT SPECIFICATION - 1

### CAL. VK67A 13 ½ Ligne Quartz Movement

Two Hands with 1/5 Center Chronograph Second,  
Small Second, Small Chronograph Minute & Hour, Date

#### 1. MOVEMENT DIMENSIONS

- Outside diameter  $\phi$  30.80mm (12H~6H) x 29.10mm (3H~9H)
- Casing diameter  $\phi$  29.00mm (12H~6H)
- Total height 5.10 mm
- Dimensions of small hands away from center 7.50 mm

#### 2. BASIC FUNCTION

- Jewels 0 jewel
- Regulation device Nil
- Accuracy  $\pm 20$  seconds per month at normal temperature range
- Battery life Approx. 3 years
- Operation temperature range From - 5 °C to + 50 °C
- Antimagnetism  $\geq 1600$  A / m
- Shock resistance On equal level with general quartz movement
- Hands

	Regulation hands unbalance	The moment of inertia
Hour	Less than 0.50 $\mu$ N·m ( 50mg·mm )	-----
Minute	Less than 0.60 $\mu$ N·m ( 60mg·mm )	-----
Small second	Less than 0.05 $\mu$ N·m ( 5mg·mm )	-----
Center chrono. second	Less than 0.20 $\mu$ N·m ( 20mg·mm )	Less than 400mg·mm <sup>2</sup>
Chrono. minute / Chrono. hour	Less than 0.05 $\mu$ N·m ( 5mg·mm )	Less than 30mg·mm <sup>2</sup>

#### 3. OSCILLATOR

- Type of quartz oscillator Tuning fork
- Frequency of quartz oscillator 32,768 Hz

#### 4. BATTERY

- Type Silver oxide battery
- Voltage 1.55 V
- Size  $\phi$  9.5 x t 3.6 ( mm )
- Recommended battery SR936SW ( SEIZAIKEN )

#### 5. DIAL FIXED METHOD

Dial legs fitted with holes on the main plate

#### 6. TEST OF ACCURACY

- Equipment to be used SEIKO Quartz Tester QT - 99  
Greiner Quartz Timer - C  
Witschi Q-Tester 4000
- Duration of measurement 10 seconds
- Microphone to be used Electromagnetic detection type

**\* All specifications are subject to change without notice.**

# SII Products

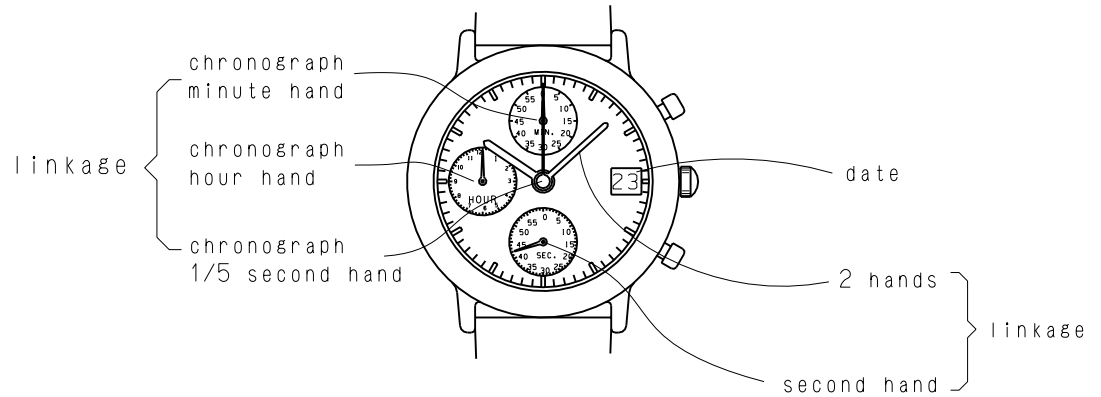
Version: 2

Movement Specification-2

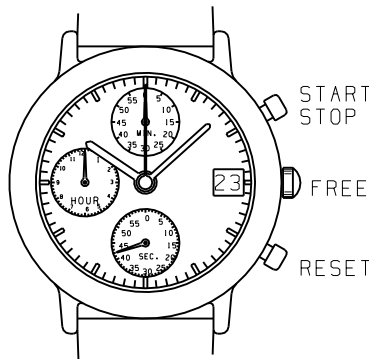
CAL. VK67A

OPERATION

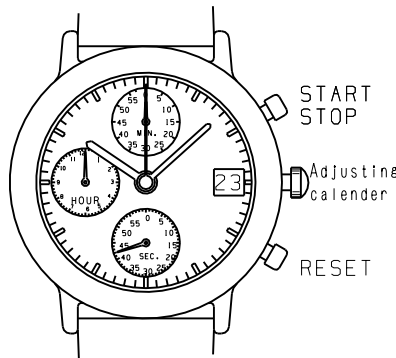
2 step motors  
(2 hands with calender, second hand, 1/5sec. chrono. maximum 12 hours)



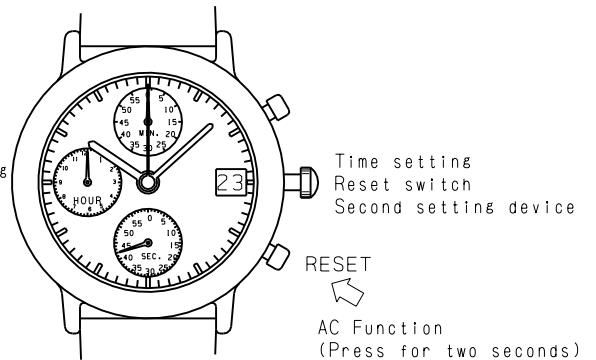
Normal Position



1st click  
adjusting calendar  
(clockwise)



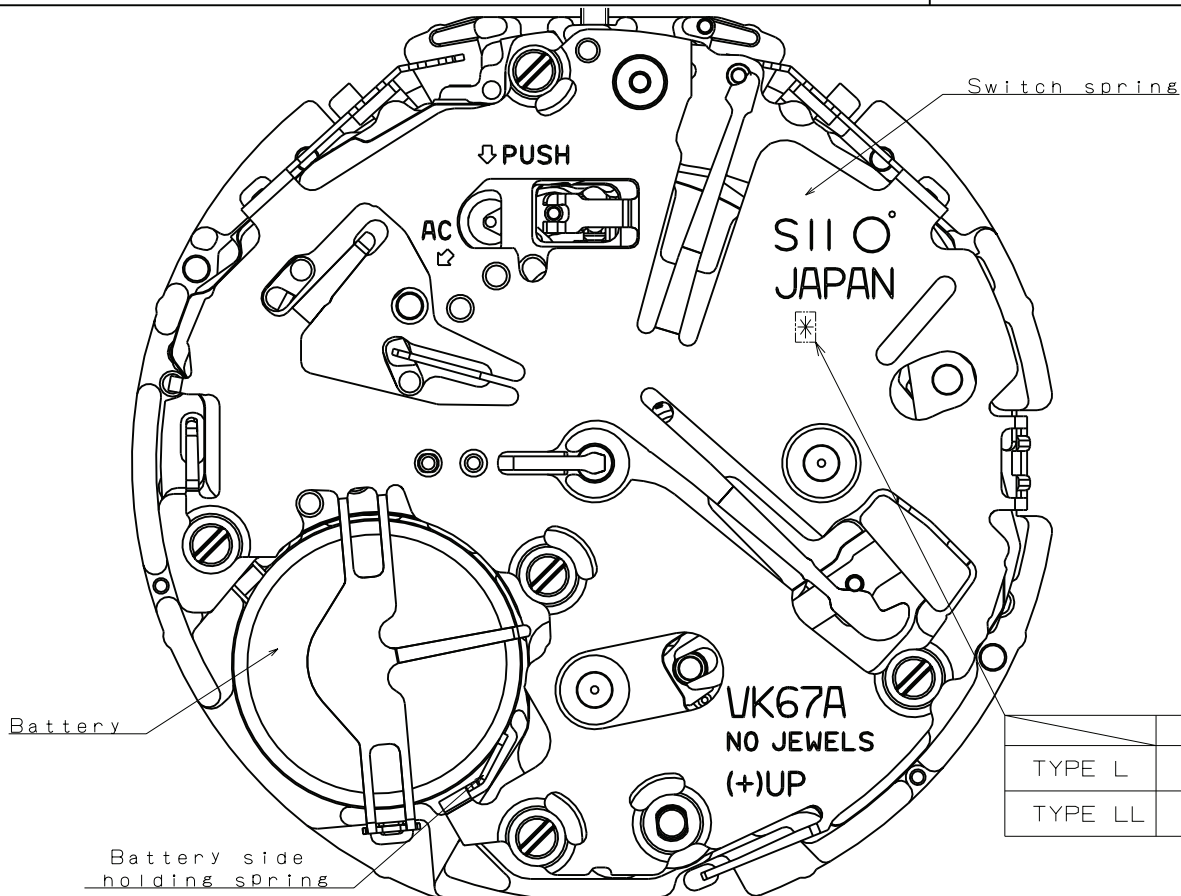
2nd click  
adjusting time



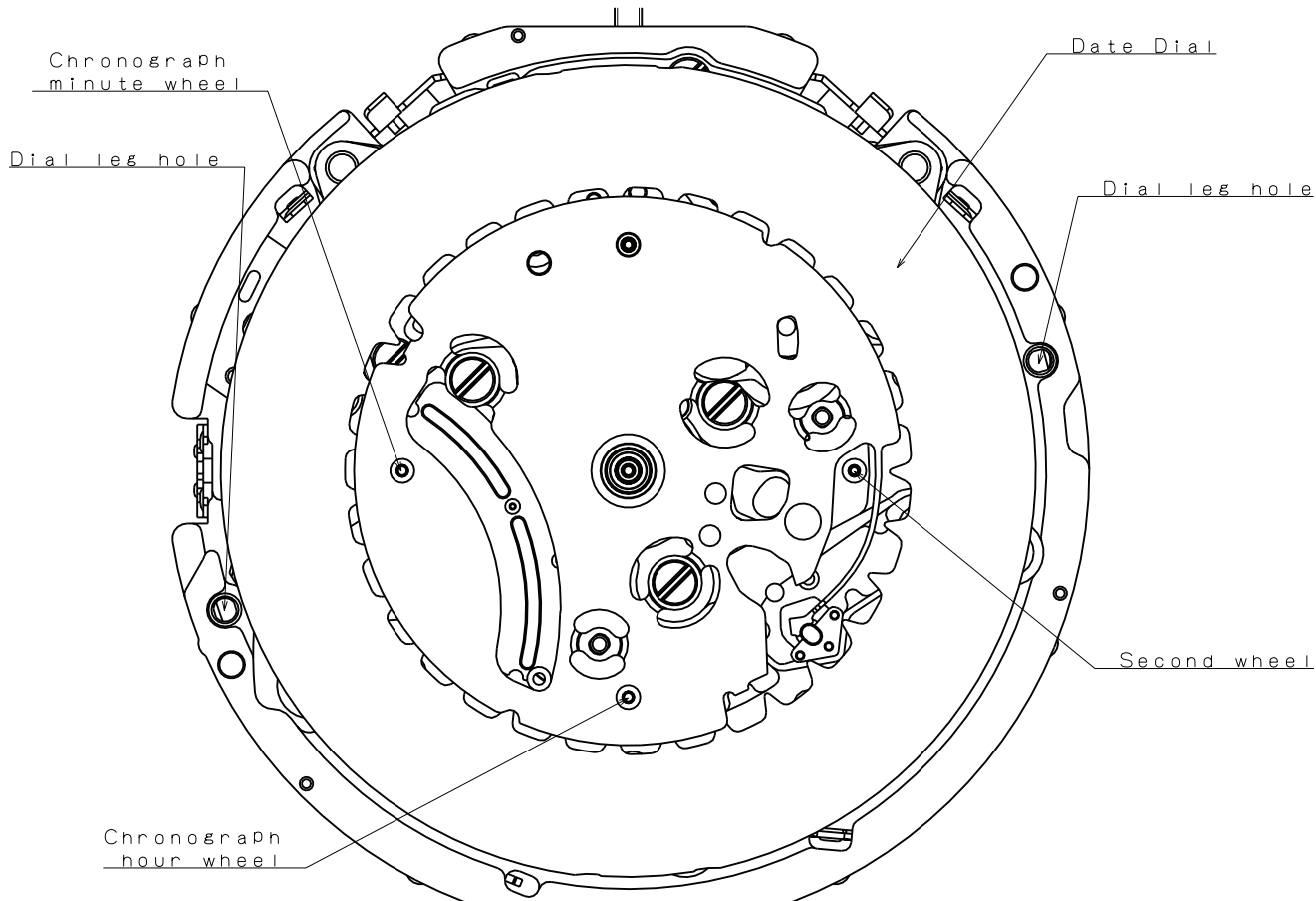
\*After AC and the crown is returned to normal position, the second hand will move at two-second interval for 10 seconds.

\*If the chronograph hand positions are incorrect, pushing the RESET button will return the hands to their appropriate positions.

Version : 1

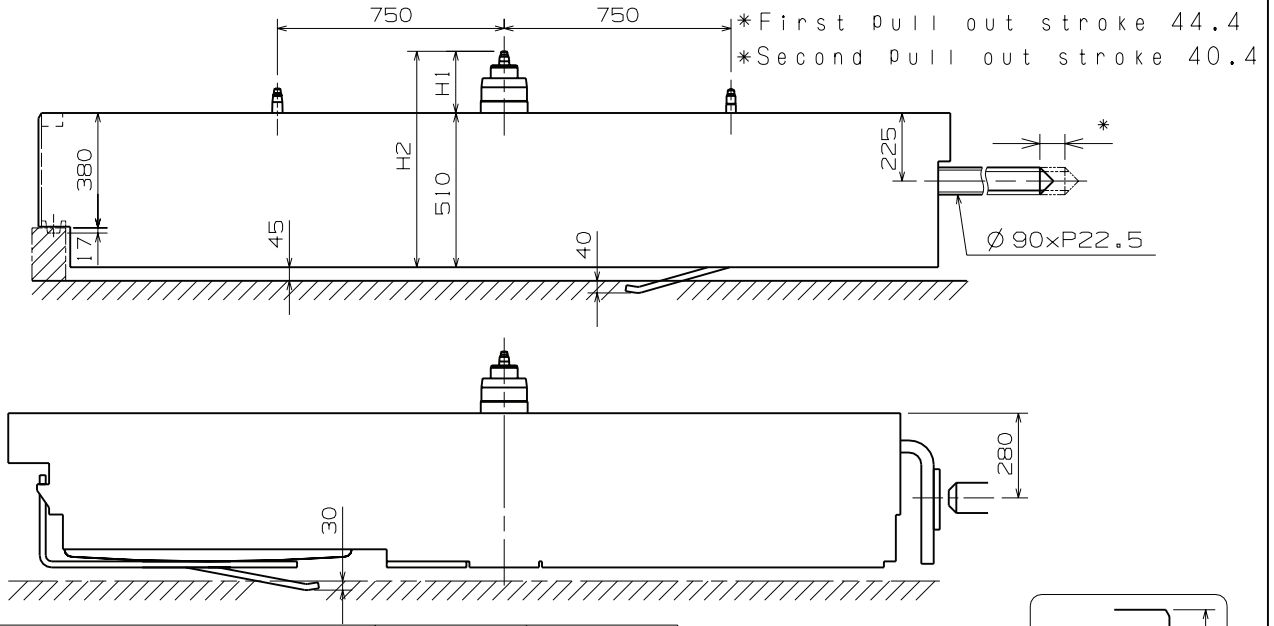


	*
TYPE L	3
TYPE LL	4

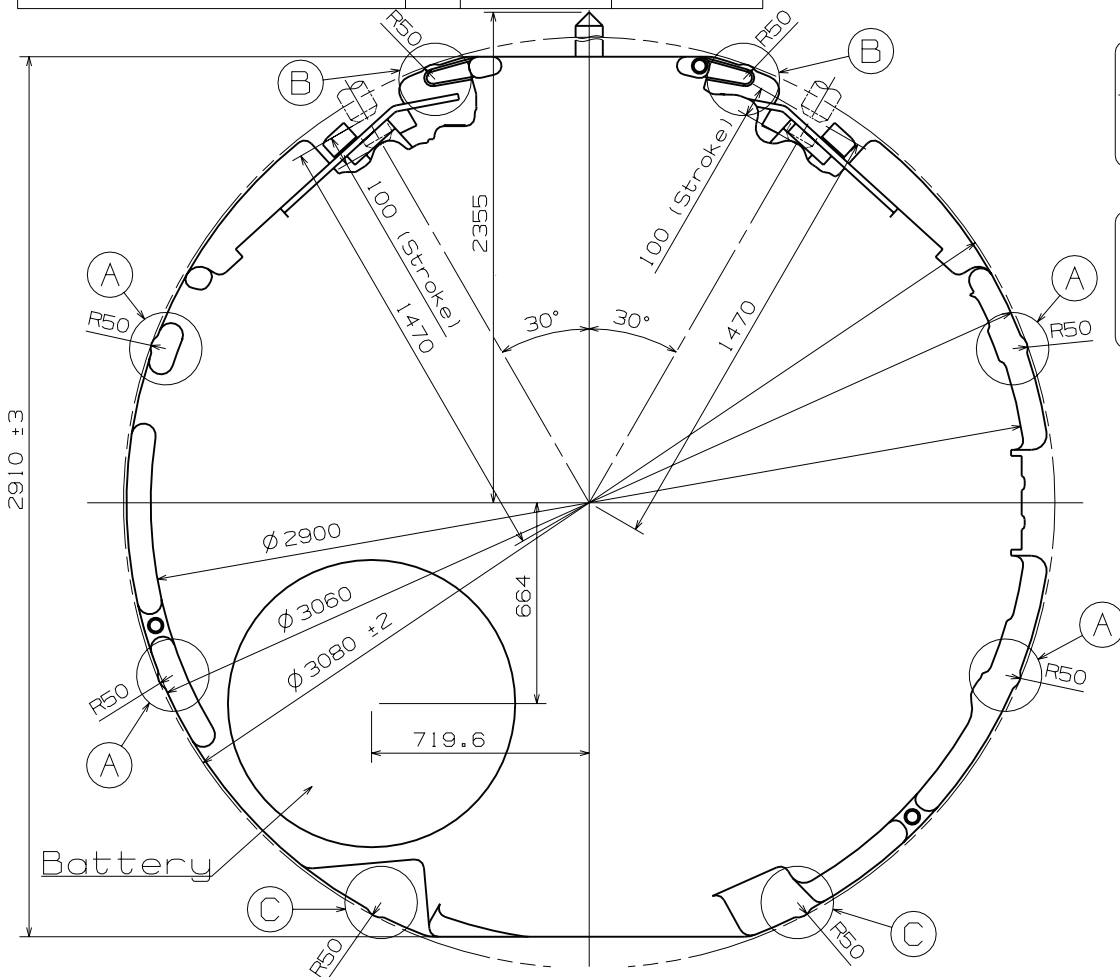
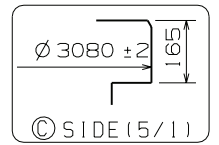
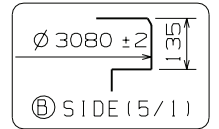
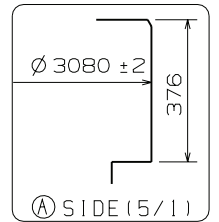


Scale : 4/1  
Unit : 1=1/100mm

Version : 5

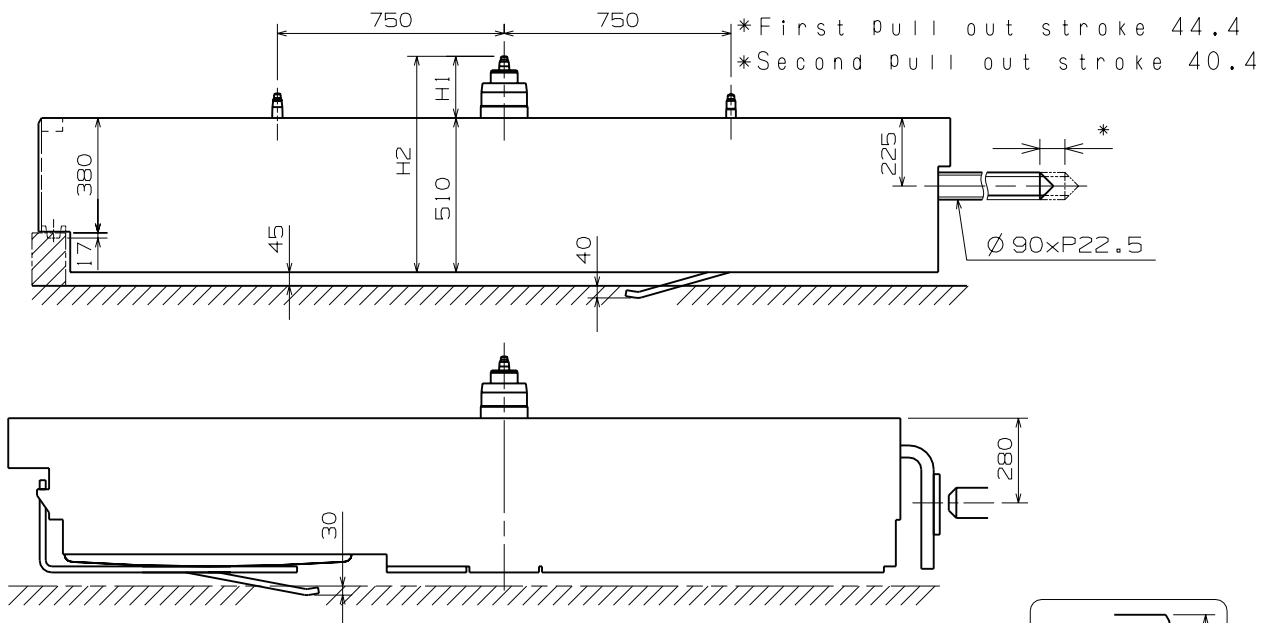


Center post		TYPE L	TYPE LL
Maximum height from main Plate surface	H1	235	280
Total height incl. movement	H2	745	790

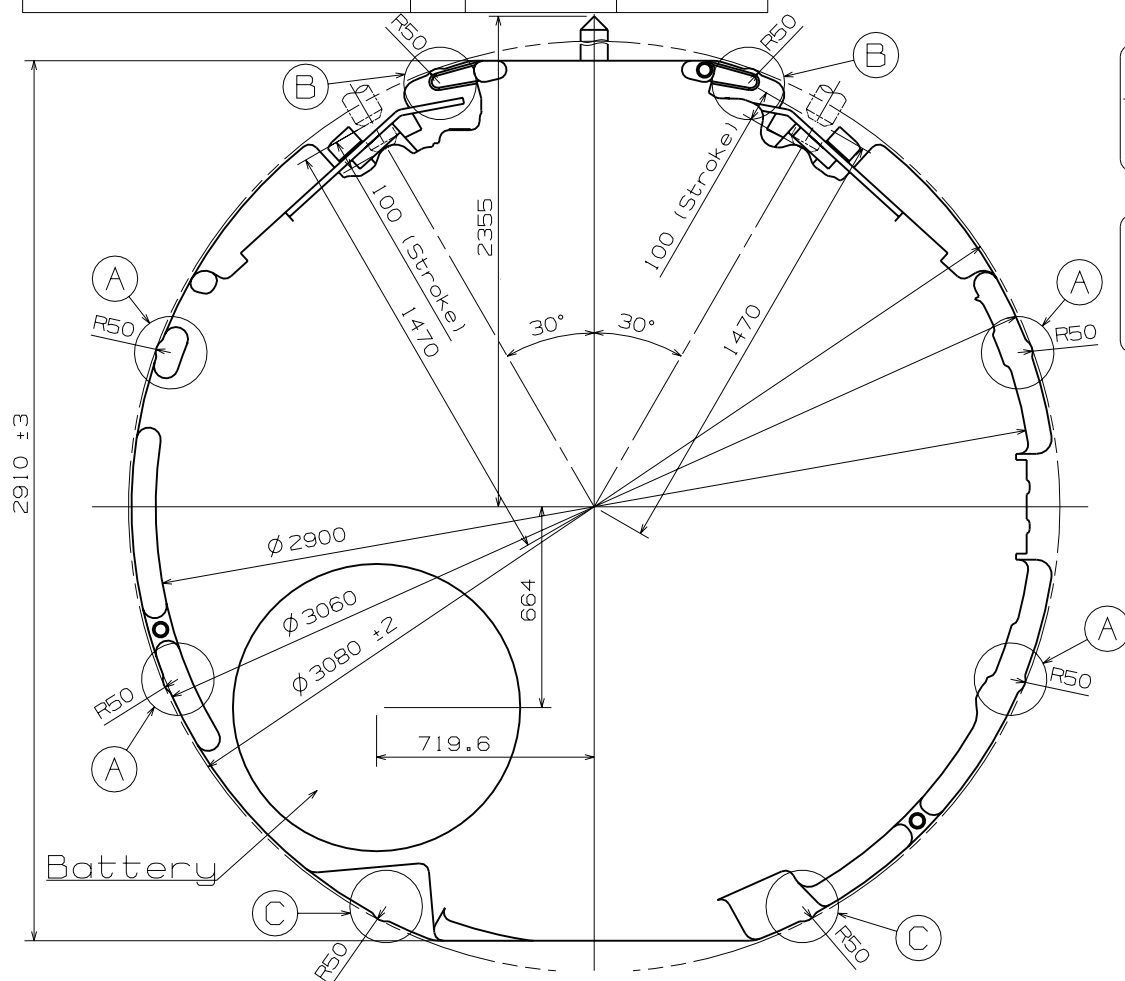
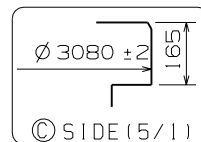
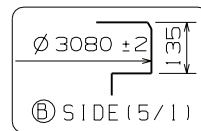
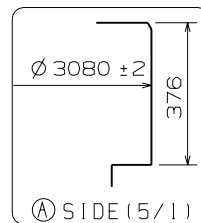


Scale : 4/1  
Unit : 1=1/100mm

Version : 4



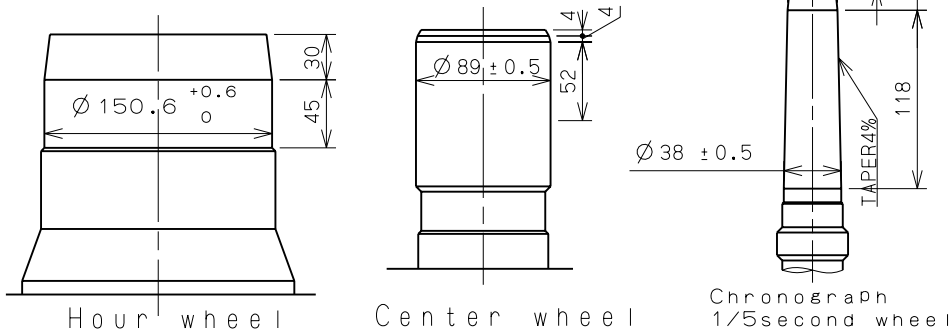
Center post 中心柱位		Type L 高針	Type LL 特高針
Maximum height from main plate surface 與機芯平面之最大高度	H1	235	280
Total height incl. movement 機芯總高度	H2	745	790



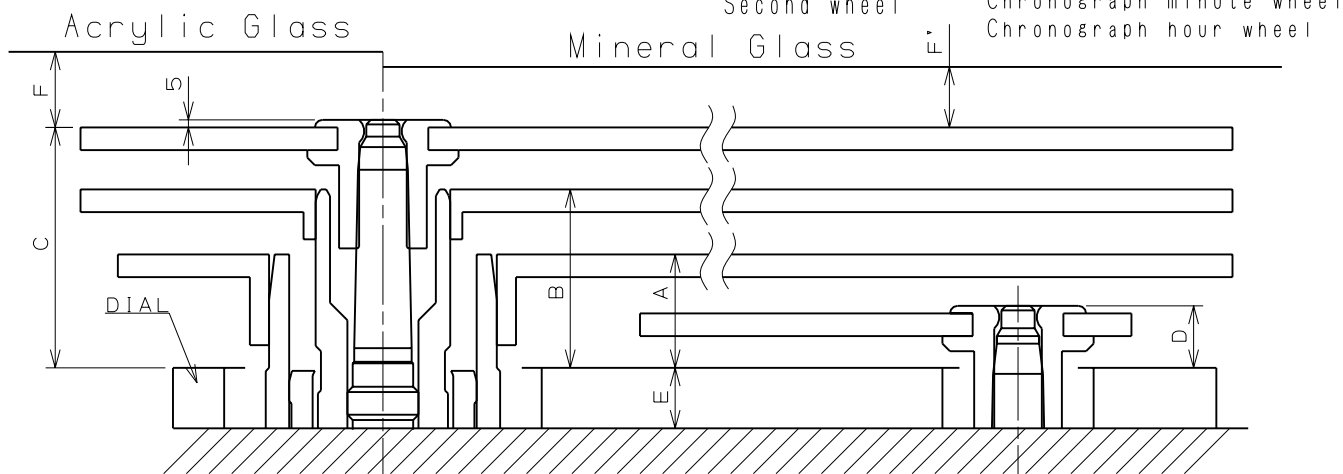
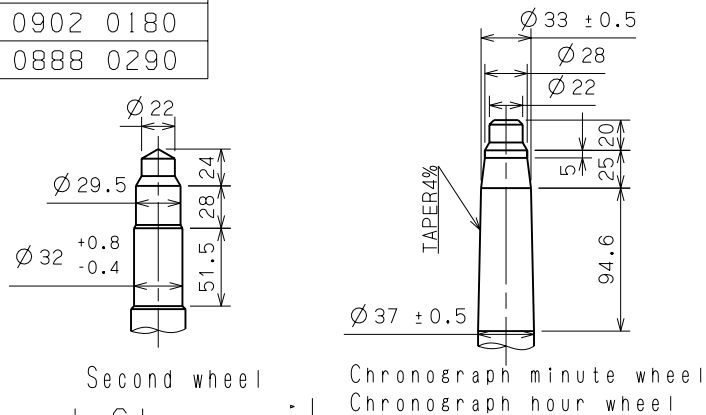
Scale : 4/1  
Unit : 1=1/100mm

Version : 4

- \*Hour hand unbalance  $\leq 0.5\mu\text{N}\cdot\text{m}$  (50mg·mm)
- \*Minute hand unbalance  $\leq 0.6\mu\text{N}\cdot\text{m}$  (60mg·mm)
- \*Second hand unbalance  $\leq 0.05\mu\text{N}\cdot\text{m}$  (5mg·mm)
- \*Chronograph 1/5 second hand unbalance  $\leq 0.20\mu\text{N}\cdot\text{m}$  (20mg·mm)
- \*Chronograph minute hand unbalance  $\leq 0.05\mu\text{N}\cdot\text{m}$  (5mg·mm)
- \*Chronograph hour hand unbalance  $\leq 0.05\mu\text{N}\cdot\text{m}$  (5mg·mm)



Parts name	Parts No.	
	TYPE L	TYPE LL
Hour wheel	0273 0410	0273 0420
Center wheel	0221 0910	0221 0920
Second wheel	0240 0180	0240 0190
Chronograph minute wheel	0902 0170	0902 0180
Chronograph hour wheel	0902 0170	0902 0180
Chronograph 1/5 second wheel	0888 0270	0888 0290



	A	B	C	D	E	F	F'
TYPE L	95	145	190	41	40	50	40
TYPE LL	95	145	190	45	85	50	40

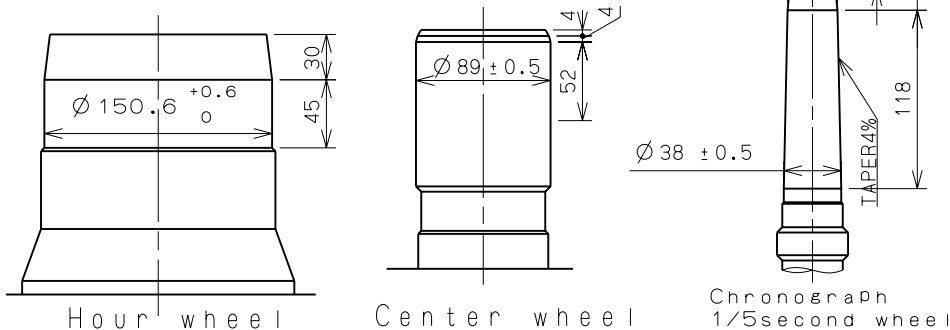
\*Do not reuse the chronograph hands once detached.  
Please change and use new hands.

Scale : 20/1

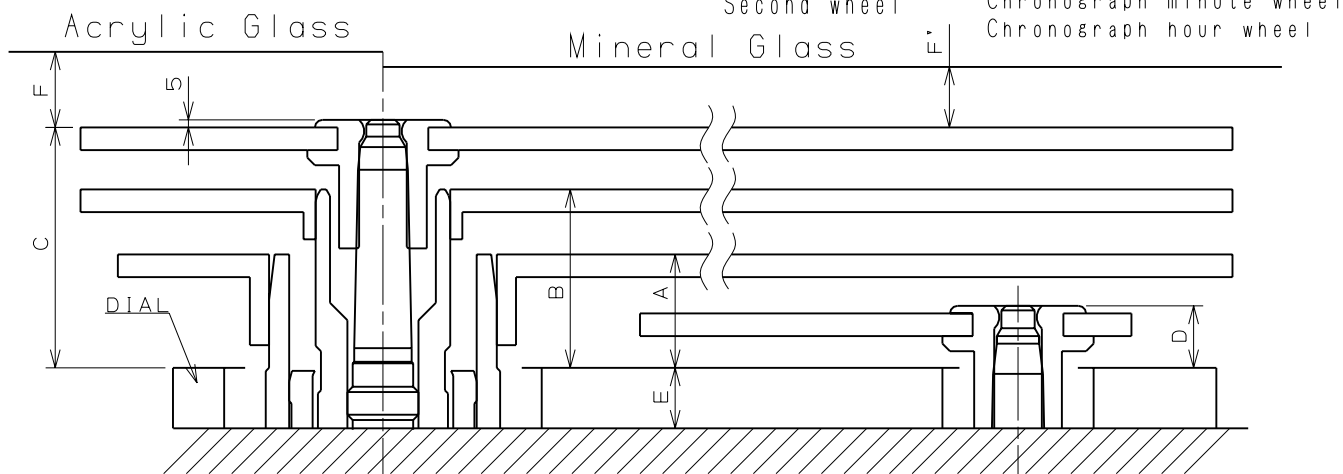
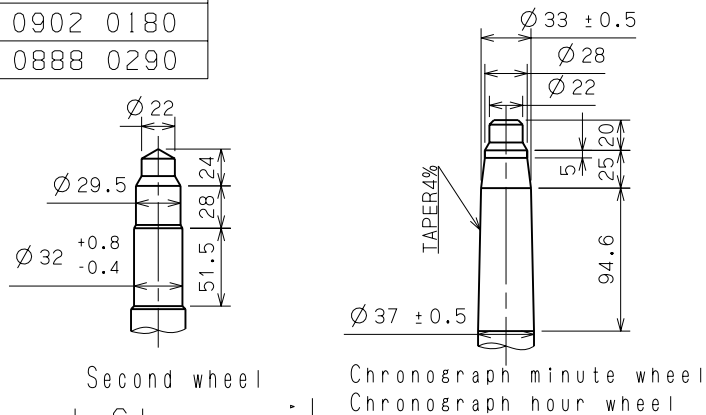
Unit : 1=1/100mm

Version : 4

- \*Hour hand unbalance  $\leq 0.5\mu\text{N}\cdot\text{m}$  (50mg·mm)
- \*Minute hand unbalance  $\leq 0.6\mu\text{N}\cdot\text{m}$  (60mg·mm)
- \*Second hand unbalance  $\leq 0.05\mu\text{N}\cdot\text{m}$  (5mg·mm)
- \*Chronograph 1/5 second hand unbalance  $\leq 0.20\mu\text{N}\cdot\text{m}$  (20mg·mm)
- \*Chronograph minute hand unbalance  $\leq 0.05\mu\text{N}\cdot\text{m}$  (5mg·mm)
- \*Chronograph hour hand unbalance  $\leq 0.05\mu\text{N}\cdot\text{m}$  (5mg·mm)



Parts name	Parts No.	
	Type L 高針	Type LL 特高針
Hour wheel 時針輪	0273 0410	0273 0420
Center wheel 分針輪	0221 0910	0221 0920
Second wheel 秒針輪	0240 0180	0240 0190
Chronograph minute wheel 計時分針輪	0902 0170	0902 0180
Chronograph hour wheel 計時時針輪	0902 0170	0902 0180
Chronograph 1/5 sec. wheel 1/5計時秒針輪	0888 0270	0888 0290



	A	B	C	D	E	F	F'
Type L 高針	95	145	190	41	40	50	40
Type LL 特高針	95	145	190	45	85	50	40

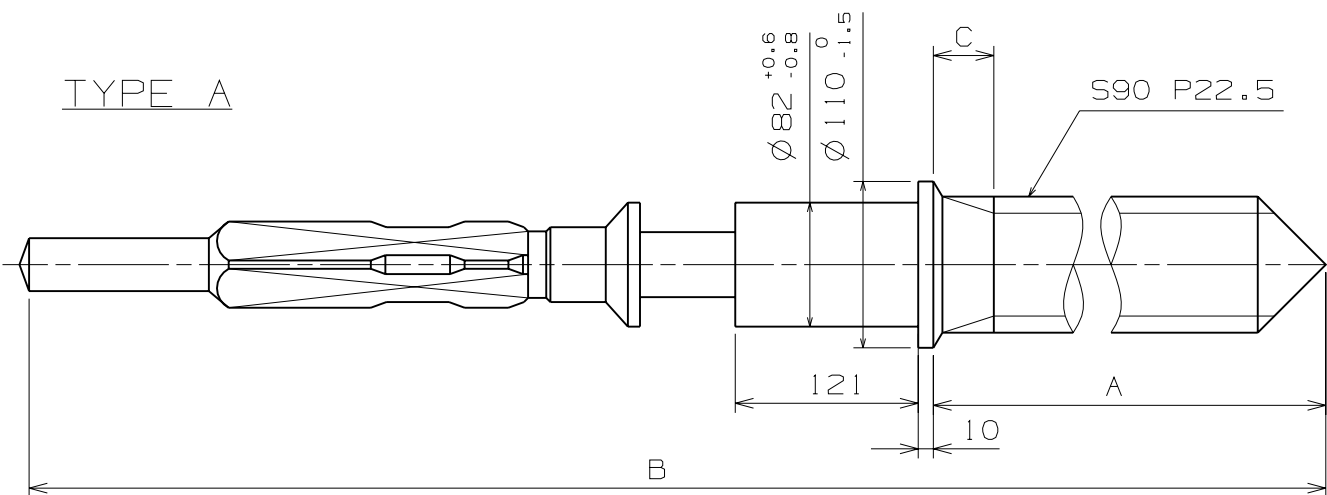
\*Do not reuse the chronograph hands once detached. Please change and use new hands.

Scale : 20/1

Unit : 1=1/100mm

Version : 4

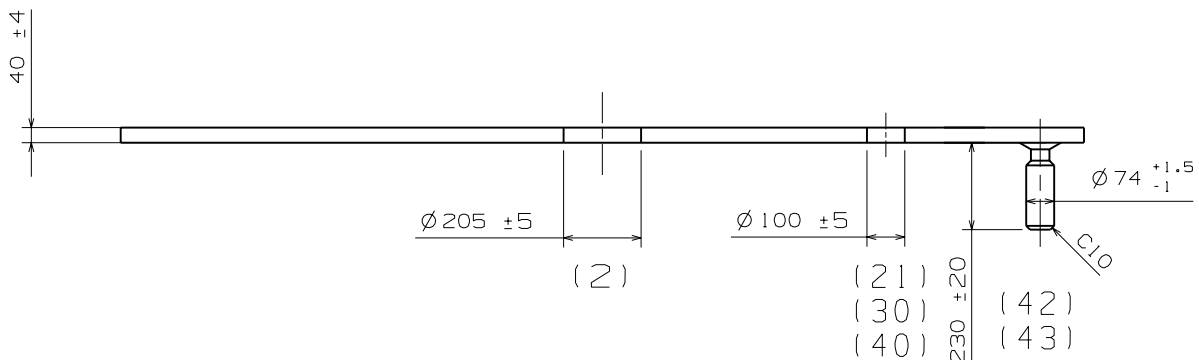
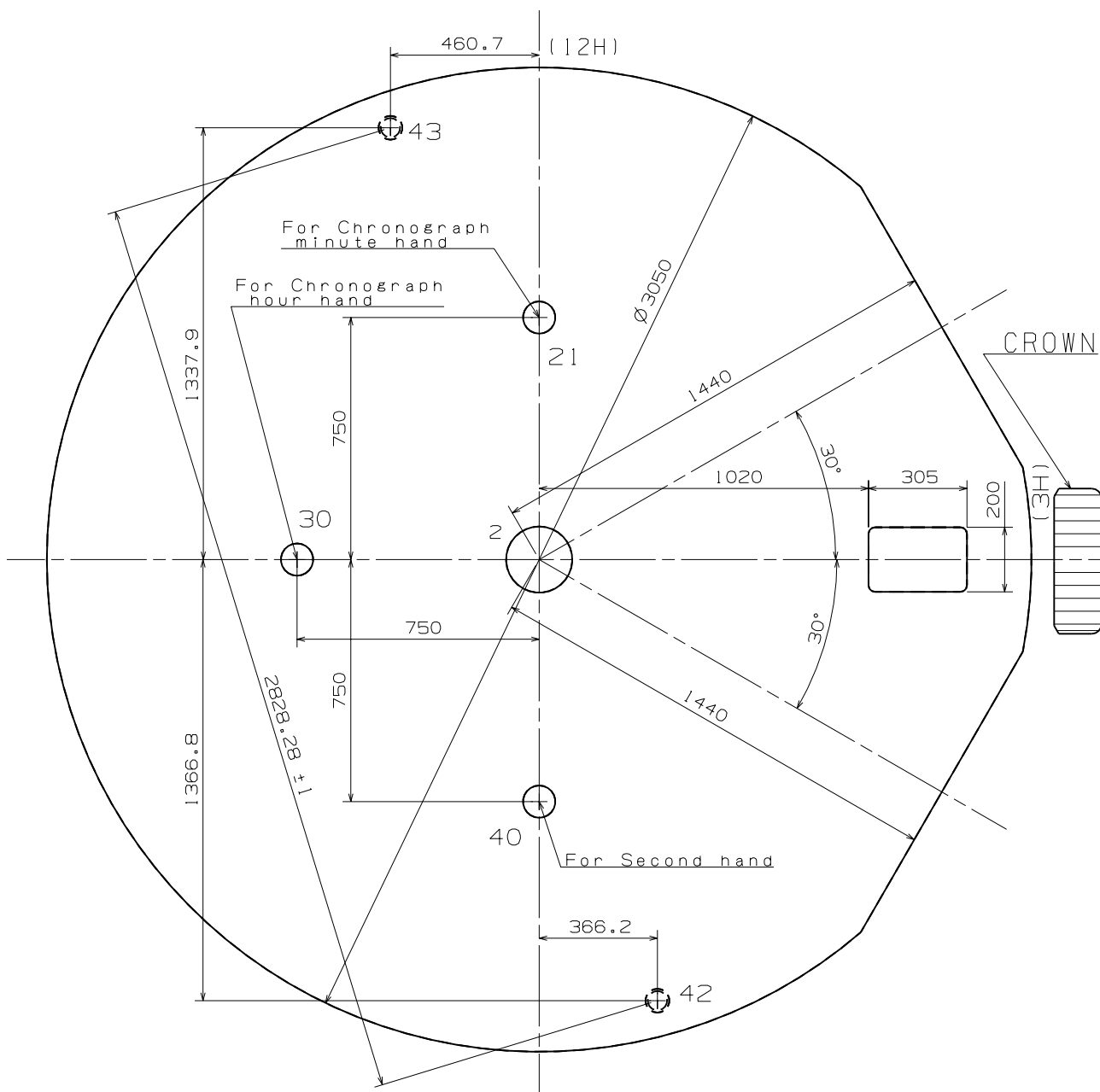




	Part. No.	A	B	C
TYPE A	0351 1770	1371	1969	40MAX

Scale : 20/1  
Unit : 1=1/100mm

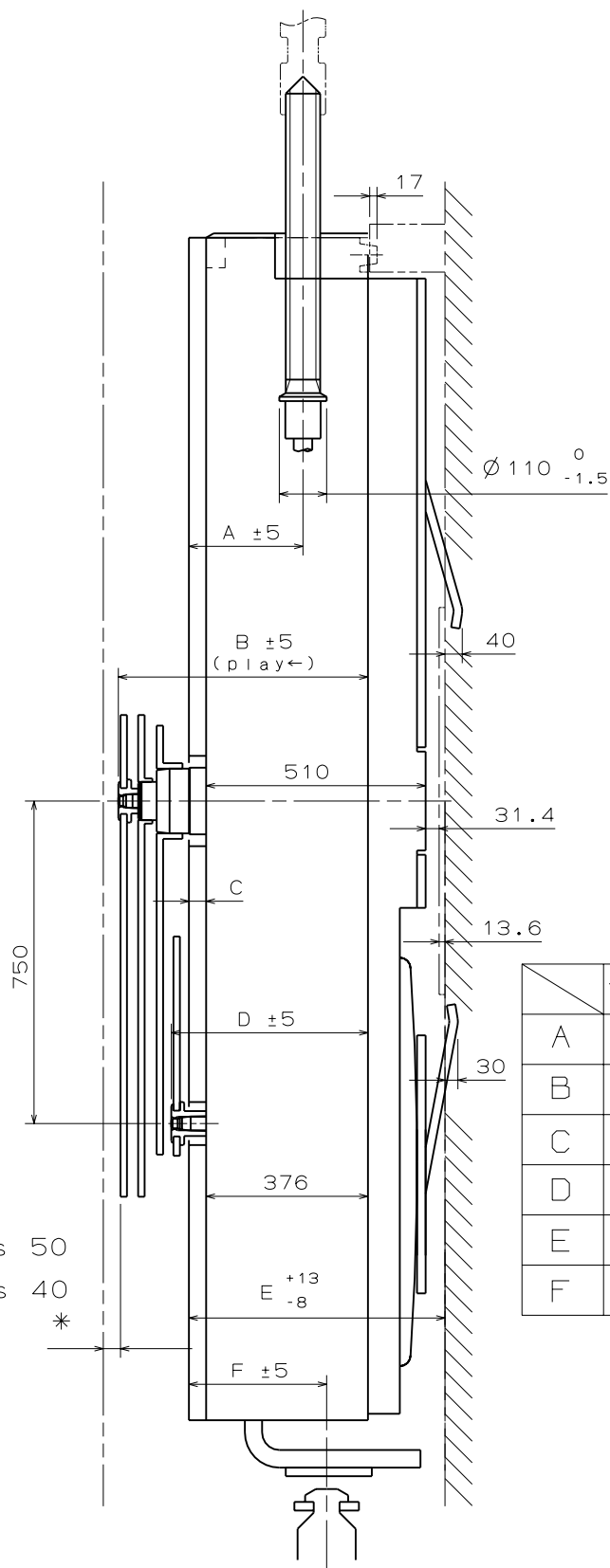
Version:2



The tolerance of 2# hole position should be under 5 (Standard is 42#-43#)

Scale : 5/1  
Unit : 1=1/100mm

Version : 2



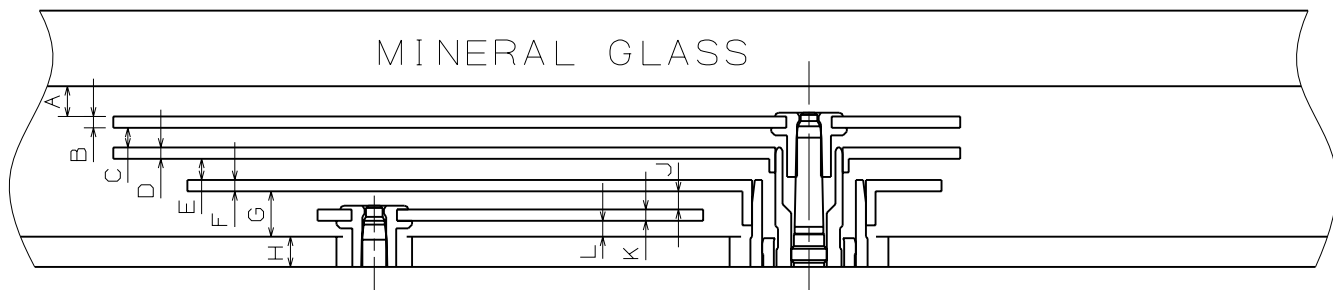
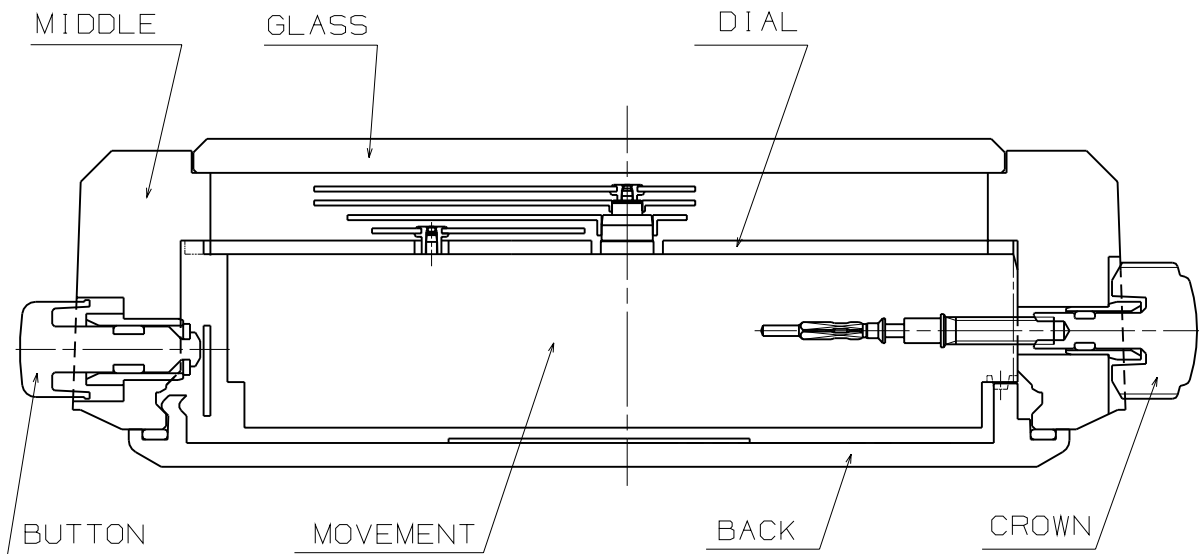
\*Acrylic Glass 50

\*Mineral Glass 40

\*

Scale :  $\neq$   
Unit : 1=1/100mm

Version : 4

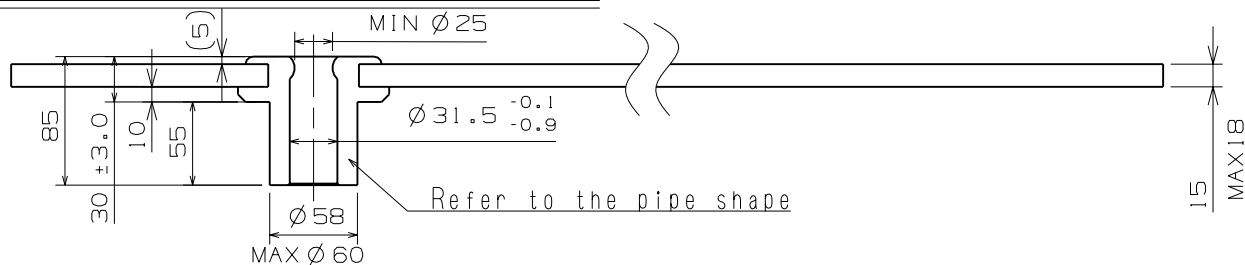


	TYPE L	TYPE LL
A	40	40
B	15	15
C	30	30
D	15	15
E	35	35
F	15	15
G	80	80
H	40	85
J	44	40
K	15	15
L	21	25

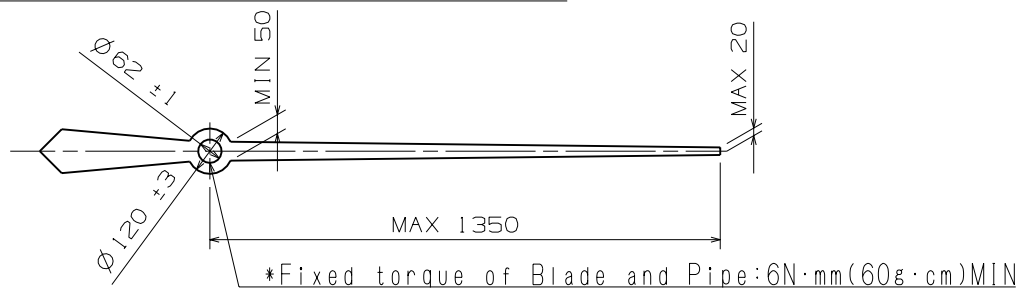
Scale :  $\neq$   
Unit : 1=1/100mm

Version : 4

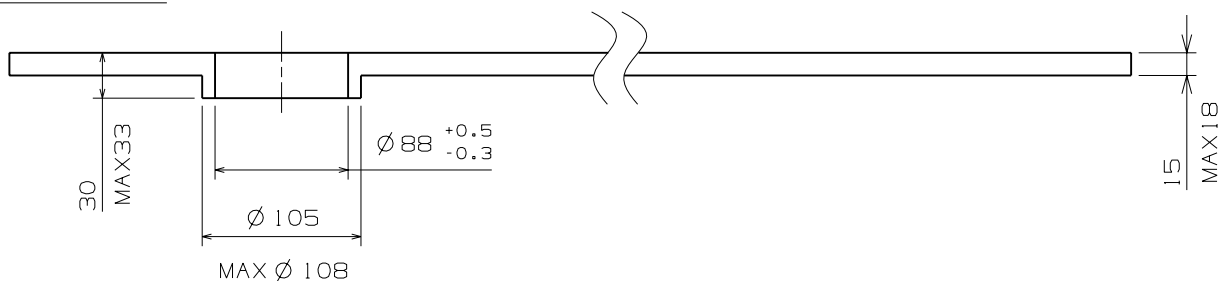
## CHRONOGRAPH 1/5SECOND



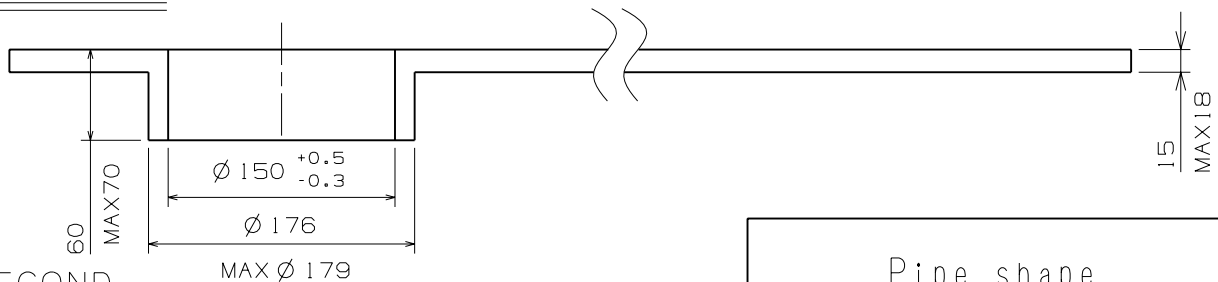
Recommended shape (Straight hand) SCALE: 5/1



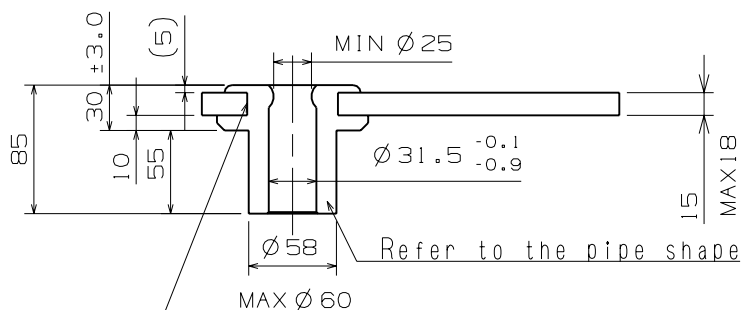
## MINUTE



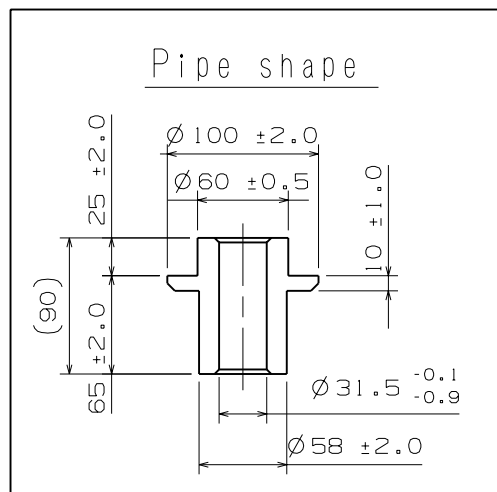
## HOUR



SECOND  
CHRONOGRAPH MINUTE  
CHRONOGRAPH HOUR



\*Fixed torque of Blade and Pipe: 6N·mm(60g·cm)MIN



Material : Bs  
Scale : 20/1  
Unit : 1=1/100mm

Version : 1