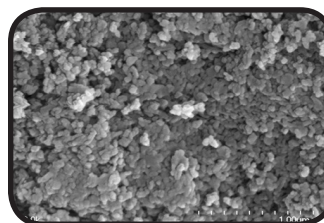
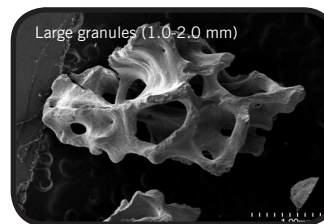
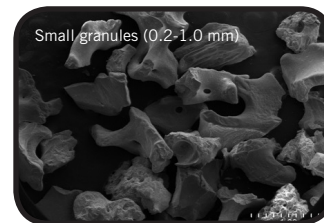


# OCS-B® Bone Graft Material

A Natural Bone Mineral Derived from Bovine Bone

- Pure cancellous hydroxyapatite derived from bovine bone by specific chemical and thermal process
- Larger surface area for cell adhesion and regeneration of new bone around the graft bone
- Osteoconductive to enhance bone formation
- Biocompatible
- Available in .02 – 1.0 mm/1.0 – 2.0 mm particle sizes for specific indications



VIAL	Product Code	Particle Size	Weight	Volume
	NB-1-0210-025	0.2 ~ 1.0 mm	0.25 g	0.55 cc
	NB-1-0210-050	0.2 ~ 1.0 mm	0.5 g	1.30 cc
	NB-1-0210-100	0.2 ~ 1.0 mm	1.0 g	2.40 cc
	NB-1-0210-200	0.2 ~ 1.0 mm	2.0 g	4.50 cc
	NB-1-1020-025	1.0 ~ 2.0 mm	0.25 g	0.68 cc
	NB-1-1020-050	1.0 ~ 2.0 mm	0.5 g	1.55 cc
	NB-1-1020-100	1.0 ~ 2.0 mm	1.0 g	2.70 cc
	NB-1-1020-200	1.0 ~ 2.0 mm	2.0 g	4.91 cc

BOWL	Product Code	Particle Size	Weight	Volume
	NB-S1-0210-025	0.2 ~ 1.0 mm	0.25 g	0.55 cc
	NB-S1-0210-050	0.2 ~ 1.0 mm	0.5 g	1.30 cc
	NB-S1-0210-100	0.2 ~ 1.0 mm	1.0 g	2.40 cc
	NB-S1-0210-200	0.2 ~ 1.0 mm	2.0 g	4.50 cc
	NB-S1-1020-025	1.0 ~ 2.0 mm	0.25 g	0.68 cc
	NB-S1-1020-050	1.0 ~ 2.0 mm	0.5 g	1.55 cc
	NB-S1-1020-100	1.0 ~ 2.0 mm	1.0 g	2.70 cc
	NB-S1-1020-200	1.0 ~ 2.0 mm	2.0 g	4.91 cc

SYRINGE	Product Code	Particle Size	Weight	Volume
	NB-L 1-0210-025	0.2 ~ 1.0 mm	0.25 g	0.55 cc
	NB-L 1-0210-050	0.2 ~ 1.0 mm	0.5 g	1.30 cc
	NB-L 1-1020-025	1.0 ~ 2.0 mm	0.25 g	0.68 cc
NB-L 1-1020-050	1.0 ~ 2.0 mm	0.5 g	1.55 cc	

## INDICATIONS FOR USE:

- Infra-bony periodontal defects
- Elevation of maxillary sinus floor
- Augmentation or reconstructive treatment of the alveolar ridge
- Periodontal defects in conjunction with Guided Tissue Regeneration (GTR) and Guided Bone Regeneration (GBR)
- Defects after root resection; apicoectomy, and cystectomy
- Peri-implant defects in conjunction Guided Bone Regeneration (GBR)
- Extraction sockets to enhance preservation of the alveolar ridge

OCS-B® is a registered trademark of NIBEC Co., Ltd.  
 Manufactured by NIBEC Co., Ltd.  
 Iwol electricity-electronic Agro-industrial Complex - 1127, Sinwol-ri, Iwol-myeon, Jincheon-gun - Chungcheongbuk-do 365-824 - Korea  
 Distributed by Keystone Dental  
 144 Middlesex Turnpike - Burlington, MA 01803 - USA