



# I-HEX MRT™

Product Catalog

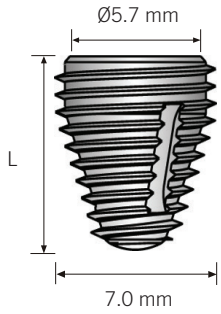




## I-HEXMRT™ PRODUCT CATALOG

I-HEXMRT™ Implants	4
I-HEXMRT™ Prosthetic Options	5
I-HEXMRT™ Prosthetic Components	6
I-HEXMRT™ Surgical Kit	7
Surgical Motor	11
Terms & Conditions	15

Product specifications are subject to change without notice.  
Items illustrated are not to scale.



**I-HEXMRT™ Implants**

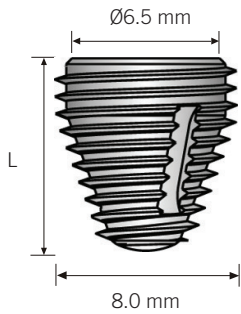
*Catalog #*

*Implant Size*

- 15864K**
- 15865K**
- 15866K**

- Ø7.0 x 7 mm Length
- Ø7.0 x 9 mm Length
- Ø7.0 x 11 mm Length

The I-HEXMRT™ Ø7.0 mm features a Ø5.7 mm platform with a 3.0 mm integrated hexagon. Abutments are available in a flare of Ø6.0 & Ø7.0 mm.



**I-HEXMRT™ Implants**

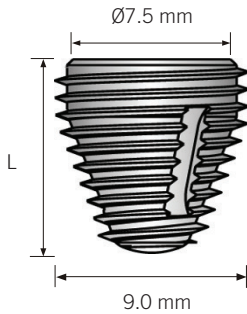
*Catalog #*

*Implant Size*

- 15867K**
- 15868K**
- 15869K**

- Ø8.0 x 7 mm Length
- Ø8.0 x 9 mm Length
- Ø8.0 x 11 mm Length

The I-HEXMRT™ Ø8.0 mm features a Ø6.5 mm platform with a 3.0 mm integrated hexagon. Abutments are available in a flare of Ø8.0 & Ø9.0 mm.



**I-HEXMRT™ Implants**

*Catalog #*

*Implant Size*

- 15870K**
- 15871K**
- 15872K**

- Ø9.0 x 7 mm Length
- Ø9.0 x 9 mm Length
- Ø9.0 x 11 mm Length

The I-HEXMRT™ Ø9.0 mm features a Ø7.5 mm platform with a 3.0 mm integrated hexagon. Abutments are available in a flare of Ø8.0 & Ø9.0 mm.



**Cover Screws**

*Catalog #*

*Description*

- 15873K**

- Ø7.0/Ø8.0/Ø9.0 mm



**Healing Abutments**

*Catalog #*

*Description*

*Cuff Height*

*Contour*

- 45335K**
- 45336K**

- Ø7.0 mm
- Ø7.0 mm

- 3 mm
- 5 mm

- 6.0 mm
- 6.0 mm

- 45337K**
- 45338K**

- Ø7.0 mm
- Ø7.0 mm

- 3 mm
- 5 mm

- 7.0 mm
- 7.0 mm

- 45339K**
- 45340K**

- Ø8.0/9.0 mm
- Ø8.0/9.0 mm

- 3 mm
- 5 mm

- 8.0 mm
- 8.0 mm

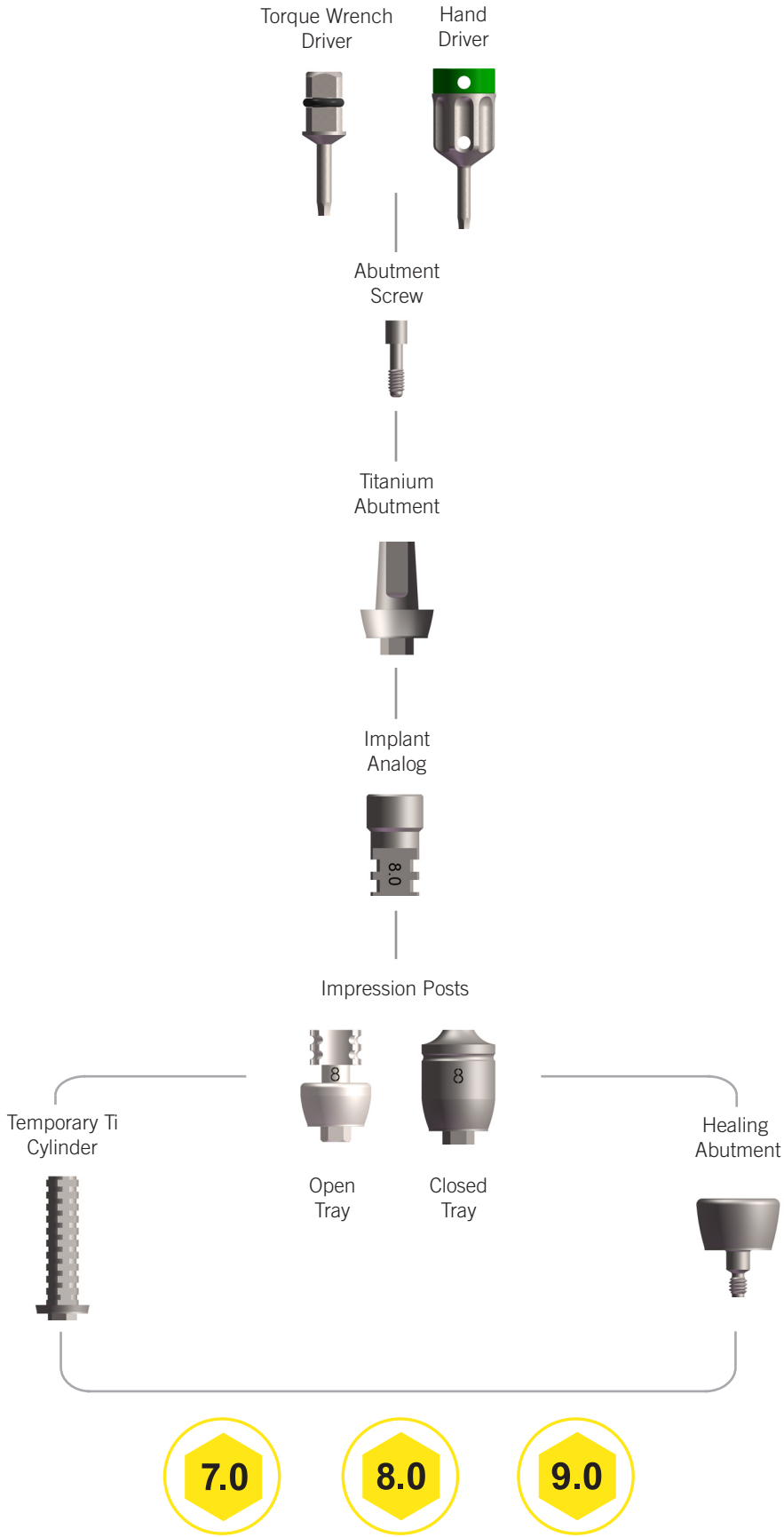
- 45341K**
- 45342K**

- Ø8.0/9.0 mm
- Ø8.0/9.0 mm

- 3 mm
- 5 mm

- 9.0 mm
- 9.0 mm

Not available in all countries.  
Cover screw not included with implants.





**Open Tray Impression Post**

*Catalog #*

*Description*

*Contour*

**45343K**  
**45345K**  
**45347K**  
**45349K**

Ø7.0 mm  
Ø7.0 mm  
Ø8.0/Ø9.0 mm  
Ø8.0/Ø9.0 mm

6.0 mm  
7.0 mm  
8.0 mm  
9.0 mm



**Closed Tray Impression Post**

*Catalog #*

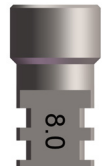
*Description*

*Contour*

**45344K**  
**45346K**  
**45348K**  
**45350K**

Ø7.0 mm  
Ø7.0 mm  
Ø8.0/Ø9.0 mm  
Ø8.0/Ø9.0 mm

6.0 mm  
7.0 mm  
8.0 mm  
9.0 mm



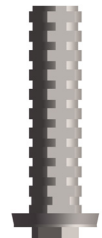
**Implant Analog**

*Catalog #*

*Description*

**45351K**  
**45352K**  
**45353K**

Ø7.0 mm  
Ø8.0 mm  
Ø9.0 mm



**Ti Temporary Abutment**

*Catalog #*

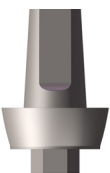
*Description*

*Cuff Height*

**45354K**  
**45355K**

Ø7.0 mm  
Ø8.0/Ø9.0 mm

1.0 mm  
1.0 mm



**Titanium Abutment**

*Catalog #*

*Description*

*Cuff Height*

**45357K**  
**45358K**  
**45359K**  
**45360K**

Ø7.0 mm  
Ø7.0 mm  
Ø8.0/Ø9.0 mm  
Ø8.0/Ø9.0 mm

1.0 mm  
3.0 mm  
1.0 mm  
3.0 mm



**Abutment Screw M1.8**

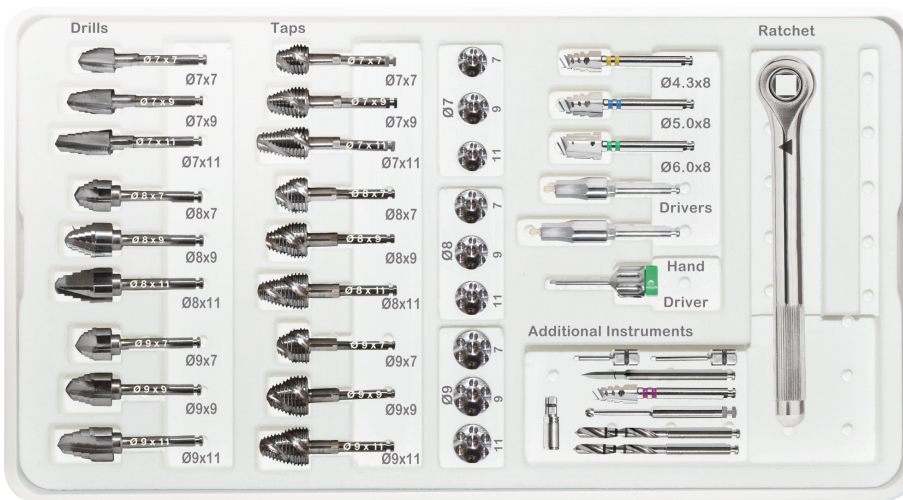
*Catalog #*

*Description*

**45356K**

1-Pack

*Note: All abutments include a final abutment screw*



*Description* *Catalog #*

I-HEXMRT™ Surgical Kit

**15863K**

*Includes:*

Surgical Cassette	<b>I-MAX-TRAY</b>		
Round Bur, Ø1.8 mm	<b>15828K</b>	Ø9.0 x 7 mm Bone Tap	<b>15877K</b>
Spade Drill, Ø2.0 mm	<b>G21243</b>	Ø9.0 x 9 mm Bone Tap	<b>15878K</b>
Twist Drill, Ø2.0 mm	<b>15829K</b>	Ø9.0 x 11 mm Bone Tap	<b>15879K</b>
Twist Drill, Ø3.0 mm	<b>15830K</b>	Ø7.0 x 7 mm Profile Gauge	<b>15853K</b>
Ø3.5 x 8 mm Tapered Drill	<b>15840K</b>	Ø7.0 x 9 mm Profile Gauge	<b>15854K</b>
Ø4.3 x 8 mm Tapered Drill	<b>15841K</b>	Ø7.0 x 11 mm Profile Gauge	<b>15855K</b>
Ø5.0 x 8 mm Tapered Drill	<b>15842K</b>	Ø8.0 x 7 mm Profile Gauge	<b>15856K</b>
Ø6.0 x 8 mm Tapered Drill	<b>15843K</b>	Ø8.0 x 9 mm Profile Gauge	<b>15857K</b>
Ø7.0 x 7 mm Tapered Drill	<b>15831K</b>	Ø8.0 x 11 mm Profile Gauge	<b>15858K</b>
Ø7.0 x 9 mm Tapered Drill	<b>15832K</b>	Ø9.0 x 7 mm Profile Gauge	<b>15859K</b>
Ø7.0 x 11 mm Tapered Drill	<b>15833K</b>	Ø9.0 x 9 mm Profile Gauge	<b>15860K</b>
Ø8.0 x 7 mm Tapered Drill	<b>15834K</b>	Ø9.0 x 11 mm Profile Gauge	<b>15861K</b>
Ø8.0 x 9 mm Tapered Drill	<b>15835K</b>	Implant Driver, Short	<b>15875K</b>
Ø8.0 x 11 mm Tapered Drill	<b>15836K</b>	Implant Driver, Long	<b>15876K</b>
Ø9.0 x 7 mm Tapered Drill	<b>15837K</b>	Surgical Ratchet	<b>L1702-01K</b>
Ø9.0 x 9 mm Tapered Drill	<b>15838K</b>	Ratchet Adapter for I-HEXMRT™ Tap/Latch	<b>15883K</b>
Ø9.0 x 11 mm Tapered Drill	<b>15839K</b>	Torque Tip, Long, .050" Hex	<b>HTLT</b>
Ø7.0 x 7 mm Bone Tap	<b>15844K</b>	Swivel Driver, Long, .050" Hex	<b>45364K</b>
Ø7.0 x 9 mm Bone Tap	<b>15845K</b>	Surgical Manual	<b>100048-EN01</b>
Ø7.0 x 11 mm Bone Tap	<b>15846K</b>	Wall Chart	<b>MK40341</b>
Ø8.0 x 7 mm Bone Tap	<b>15847K</b>	Drill Sequence Chart	<b>MK40342</b>
Ø8.0 x 9 mm Bone Tap	<b>15848K</b>	Drill Usage Chart	<b>MK40343</b>
Ø8.0 x 11 mm Bone Tap	<b>15849K</b>		



**Drills**



*Catalog #*

*Description*

**15828K**

Round Bur , Ø1.8 mm

**G21243**

Spade Drill, Ø2.0 mm

**15829K**

Twist Drill, Ø2.0 mm

**15830K**

Twist Drill, Ø3.0 mm

**Tapered Drills**



*Catalog #*

*Description*

**15840K**

Ø3.5 x 8 mm

**15841K**

Ø4.3 x 8 mm

**15842K**

Ø5.0 x 8 mm

**15843K**

Ø6.0 x 8 mm

**Tapered Drills**



*Catalog #*

*Description*

**15831K**

Ø7.0 x 7 mm

**15832K**

Ø7.0 x 9 mm

**15833K**

Ø7.0 x 11 mm

**15834K**

Ø8.0 x 7 mm

**15835K**

Ø8.0 x 9 mm

**15836K**

Ø8.0 x 11 mm

**15837K**

Ø9.0 x 7 mm

**15838K**

Ø9.0 x 9 mm

**15839K**

Ø9.0 x 11 mm

**Bone Taps**



*Catalog #*

*Description*

**15844K**

Ø7.0 x 7 mm

**15845K**

Ø7.0 x 9 mm

**15846K**

Ø7.0 x 11 mm

**15847K**

Ø8.0 x 7 mm

**15848K**

Ø8.0 x 9 mm

**15849K**

Ø8.0 x 11 mm

**15877K**

Ø9.0 x 7 mm

**15878K**

Ø9.0 x 9 mm

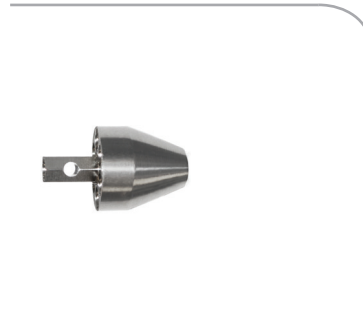
**15879K**

Ø9.0 x 11 mm





### Profile Gauges



#### Catalog #

**15853K**  
**15854K**  
**15855K**

#### Description

Ø7.0 x 7 mm  
Ø7.0 x 9 mm  
Ø7.0 x 11 mm

**15856K**  
**15857K**  
**15858K**

Ø8.0 x 7 mm  
Ø8.0 x 9 mm  
Ø8.0 x 11 mm

**15859K**  
**15860K**  
**15861K**

Ø9.0 x 7 mm  
Ø9.0 x 9 mm  
Ø9.0 x 11 mm

### Straight Rod (Optional)



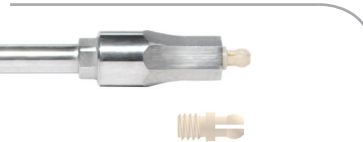
#### Catalog #

**15862K**

#### Description

For Profile Gauges

### Implant Drivers



#### Catalog #

**15875K**  
**15876K**  
**15874K**

#### Description

Short  
Long  
Insertion Bit, 2-Pack

### Surgical Ratchet



#### Catalog #

**L1702-01K**

#### Description

Surgical Ratchet

### Surgical Ratchet/ Torque Wrench



#### Catalog #

**K15695**

#### Description

Surgical Ratchet/Torque Wrench

### Ratchet Adapter



#### Catalog #

**15883K**

#### Description

Ratchet Adapter for I-HEXMRT™ Tap/Latch

### Drivers



#### Catalog #

**HTLT**  
**45363K**  
**45364K**

#### Description

Torque Tip, Long, .050" Hex  
Swivel Driver, Short, .050" Hex  
Swivel Driver, Long, .050" Hex





**Implantmed Surgical Motors**

SI-1015



*Catalog #*

*Description*

- WH-9000207** SI-1015 Implantmed Base Motor Unit
- WH-9000213** SI-1015 Implantmed Motor Unit Fully Loaded
- WH-9000208\*** SI-1015 Implantmed Base Motor Unit w/Ostell
- WH-9000209\*** SI-1015 Implantmed Motor Unit, WiFi Footpedal Upgrade
- WH-9000210\*** SI-1015 Implantmed Motor Unit, WiFi Footpedal Upgrade & Ostell
- WH-9000211\*** SI-1015 Implantmed Motor Unit, LED+ Motor Upgrade
- WH-9000212\*** SI-1015 Implantmed Motor Unit, LED+ Motor Upgrade & Ostell
- WH-9000214\*** SI-1015 Implantmed Motor Unit Fully Loaded & Ostell

**Implantmed Surgical Handpieces**

WS-75 L



*Catalog #*

*Description*

- WH-30058000** S-11 L 1:1 Straight (For Implantmed SI-1015 LC motor only)
- WH-30033000** WS-75 L 20:1, Contra-angle (For Implantmed SI-1015 LC motor only)
- WH-30065000** WS-75 Contra-Angle 20:1 Dismantlable Handpiece for implant surgery (10-2,000 rpm)
- WH-30032000** WS-75 L G Contra-Angle 20:1 Dismantlable Handpiece with Mini LED+ for implant surgery (10-2,000 rpm)
- WH-30056000** S-11 1:1 High Speed Straight Handpiece for oral surgery (200-40,000 rpm)
- WH-10207550** WI-75 E/KM Contra-Angle 20:1 Handpiece for implant surgery (10-2,000 rpm)

*May not be available in all markets.*

*\*Available upon request.*



## Implantmed Accessories

Ostell ISQ Module



<i>Catalog #</i>	<i>Description</i>
<b>WH-04363600</b>	Irrigation Tubing and Spike Assembly, 6-Pack, Disposable (for use with Implantmed series & Elcomed SA-310 motors)
<b>WH-00929300</b>	Irrigation Tubing with Luer Lock, Green (10-Pack)
<b>WH-04019000</b>	Irrigation Tubing Clips, 5-Pack (for use with Implantmed SI-915 motors to hold tubing to motor cable)
<b>WH-02610500</b>	Irrigation Needle/Canula (for use with internally irrigated drills)
<b>WH-06016400</b>	Y-Connector Complete
<b>WH-06946300</b>	Irrigation Spray Clip (new series), Left Side, E/KM, Green (3-Pack)
<b>WH-06948300</b>	Irrigation Spray Clip (new series), Right Side, E/KM, Green (3-Pack)
<b>WH-06948400</b>	Irrigation Spray Clip (new series), Left Side, Green (3-Pack)
<b>WH-06949500</b>	Irrigation Spray Clip (new series), Right Side, Green (3-Pack)
<b>WH-04757100</b>	Irrigation Spray Clip (old series), E/KM, Black (3-Pack)
<b>WH-05051000</b>	Irrigation Spray Clip (old series), Black (3-Pack)
<b>WH-02139800</b>	Bur Testing Gauge (to check all 2.35 mm & 1.6 mm burs)
<b>WH-10940011</b>	W&H F-1 Service Oil, 400 ml (Special shipping & handling required [aerosol can]. Contact Customer Service for shipping rates.)
<b>WH-02038200</b>	Spray Cap for Service Oil (reusable replacement)
<b>WH-04013500</b>	Sterilization Case
<b>WH-30264001</b>	S-NW +SPI WiFi Foot Pedal (For Elcomed SA-310 & Implantmed SI-915 white only)
<b>WH-30264000*</b>	S-NW + CAN WiFi Foot Pedal (For Implantmed SI-1015 only)
<b>WH-30210000*</b>	Ostell ISQ Module (For Implantmed SI-1015 only)
<b>WH-30185000*</b>	EM-19 Motor, 1.8m Cable, without LED+ Port (For Implantmed SI-1015 only)
<b>WH-30281000*</b>	EM-19 LC Motor, 1.8m Cable, LED+ Port (For Implantmed SI-1015 only)

May not be available in all markets.

\*Available upon request.



## Terms and Conditions

**TERMS AND CONDITIONS OF SALE.** The following are the terms and conditions by which Keystone Dental, Inc. sells its products. As used herein, the term "Keystone" means Keystone Dental, Inc. and its applicable affiliates; the term "Products" means the Keystone products and services described in this invoice, and "Purchaser" means the person or company purchasing the Products.

**GOVERNING TERMS.** Any purchase and shipment of Products shall be deemed to be on the terms and conditions stated herein. Any and all terms and conditions submitted by Purchaser are hereby rejected.

**TAXES.** The prices set forth herein do not include any sales, use, excise, ad valorem, property or other taxes applicable to the sale, use or delivery of the Products, all of which shall be paid by Purchaser separately or added to the contract price and paid by Purchaser to Keystone.

**PRICES.** The prices set forth for the Products are in United States Dollars. All prices shall be as of the invoice date, regardless of the date the Product is originally ordered from Keystone.

**DELIVERY.** Products sold hereunder shall be delivered F.O.B. shipping point. Purchaser shall assume responsibility for all subsequent delivery or shipping charges.

**ACCEPTANCE.** Purchaser must inspect all Products for defects and/or non-conformity within seven (7) calendar days of delivery. After this period, Purchaser will have accepted such Products.

**PAYMENT.** Payment terms shall be as set forth on the front of the invoice. If payment is late, the maximum statutory interest rate will apply on such late amount. Keystone may, in its sole discretion, suspend shipments of Products until full payment by Purchaser of all past due amounts to Keystone is made.

**RETURN; EXCHANGE.** Purchaser may return any Product within thirty (30) calendar days of the invoice date so long as there is an offsetting (exchange) order of equal or greater value. Purchaser may return any Product after thirty (30) calendar days from the invoice date, but no later than ninety (90) calendar days after the invoice date, so long as there is an offsetting (exchange) order of equal or greater value, provided, however, such returns shall be subject to a 15% re-stocking fee. Keystone will not accept any returns or exchanges after ninety (90) calendar days following the invoice date.

No biomaterial products (bone grafting and membrane) will be accepted for return or exchange. No returns or exchanges will be accepted for Products that (i) were originally sold as part of a kit, pack or set, (ii) were included on the original invoice at no charge, (iii) have less than six (6) months remaining before expiration or (iv) were custom ordered. The Purchaser shall pay all shipping costs associated with the return or exchange of a Product. No Products will be accepted by Keystone for return or exchange without an RMA number given to Purchaser by Keystone Customer Service. Returned Products must be unexpired, unopened and undamaged, returned freight prepaid.

**WARRANTY.** EXCEPT AS EXPRESSLY SET FORTH IN KEYSTONE'S LIFETIME IMPLANT WARRANTY PROGRAM, KEYSTONE DOES NOT MAKE ANY WARRANTY, EXPRESS OR IMPLIED, EXCEPT THAT ITS PRODUCTS SHALL BE FREE FROM DEFECTS IN MATERIAL AND/OR WORKMANSHIP. THIS WARRANTY APPLIES ONLY TO THE ORIGINAL PURCHASER. PURCHASER ASSUMES ALL RISKS AND LIABILITY RESULTING FROM THE USE OF THESE PRODUCTS, WHETHER USED SEPARATELY OR IN COMBINATION WITH OTHER PRODUCTS. THE WARRANTY DOES NOT APPLY IF THE FAILURE OF THE PRODUCT IS CAUSED BY TRAUMA OR ACCIDENT OR BY THE PATIENT IN WHOM THE IMPLANT WAS INSTALLED OR IF THE PURCHASER IS NOT CURRENT ON ALL OUTSTANDING PAYMENTS TO KEYSTONE AT THE TIME OF SUCH CLAIM. KEYSTONE MAY MODIFY OR TERMINATE ITS WARRANTY PROGRAM AT ANY TIME, HOWEVER ANY CHANGES TO THE WARRANTY PROGRAM WILL NOT AFFECT PRODUCTS ALREADY PURCHASED AT THE TIME OF SUCH CHANGE. PURCHASER'S SOLE REMEDY WITH RESPECT TO CLAIMS RELATED TO KEYSTONE PRODUCTS IS RESTRICTED TO THE WARRANTY POLICY.

**LIMITATION OF LIABILITY.** UNDER NO CIRCUMSTANCES SHALL KEYSTONE OR ANY OF ITS AFFILIATES BE LIABLE FOR BUSINESS INTERRUPTION, LOSS OF PROFITS, SPECIAL, INDIRECT, INCIDENTAL OR CONSEQUENTIAL DAMAGES OF ANY NATURE AND FROM ANY CAUSE WHETHER BASED IN CONTRACT, WARRANTY OR TORT (INCLUDING NEGLIGENCE) OR OTHER LEGAL THEORY, EVEN IF KEYSTONE HAS BEEN ADVISED OF THE POSSIBILITY OF SUCH DAMAGES.

**INTELLECTUAL PROPERTY.** All intellectual property rights in Products sold to Purchaser shall remain the exclusive property of Keystone and its licensors.

**PERSONAL DATA.** It is Purchaser's responsibility to obtain patient's consent to transfer any personal data to Keystone.

**TERMINATION.** Keystone may terminate this or any agreement with Purchaser to purchase its products upon immediate written notice if Purchaser fails to pay any of its debt obligations to Keystone on time.

**FORCE MAJEURE.** Keystone shall not be liable for any loss or damage due to failure or delay arising out of any cause beyond the reasonable control of Keystone. In the event of any failure or delay resulting from such causes, an equitable adjustment of delivery and any other appropriate terms and conditions shall be made. No such failure or delay shall be the basis for an increase in Keystone's obligations, nor any termination by Purchaser.

**VALIDITY.** If any provision of these Terms and Conditions is found to be illegal or unenforceable in any respect, such illegality or unenforceability shall not affect any other provision of these Terms and Conditions, all of which shall remain enforceable in accordance with their terms.

**GENERAL PROVISIONS.** The purchase of the Products and these Terms and Conditions are governed by the laws of the Commonwealth of Massachusetts, without regard to conflicts of law principles. Any dispute, claim or controversy arising out of or in connection with the purchase of the Products shall be resolved by arbitration in Boston, Massachusetts. This document incorporates all oral and written representations between the parties and constitutes the entire agreement and understanding of the parties with respect to the subject matter hereof and supersedes any and all other agreements either oral or written between the parties with respect to such subject matter. No amendment or modification may be made to this document unless in writing and duly executed by an authorized representative of Keystone. Keystone may subcontract, assign or transfer its obligations or rights to a competent third party. Purchaser may not assign or transfer any of its obligations without the consent of Keystone.



**Keystone Dental, Inc.**

**Global Headquarters**

154 Middlesex Turnpike

Burlington, MA 01803 USA

General Inquiries: 781-328-3600

Customer Relations: 866-902-9272 or 781-328-3490

Fax: 866-903-9272 or 781-328-3400

Email: [info@keystonedental.com](mailto:info@keystonedental.com)



Caution, consult accompanying documents

**Trademark Acknowledgements**

I-HEXMRT and "Smarter Thinking. Simpler Design."

are trademarks and registered trademarks of Keystone Dental, Inc.