



**DC Sports**  
13000 Temple Ave  
City of Industry Ca, 91746  
T. 626-937-6988  
[www.dcsports.com](http://www.dcsports.com)

---

**SRI4900**

**COLD AIR/SHORT RAM INTAKE INSTALLATION INSTRUCTIONS**  
**16-17 Lexus IS200 T/ 18-20 Lexus IS300**

**!!! READ ALL INSTRUCTION THOROUGHLY BEFORE BEGINNING  
INSTALLATION. FAILURE TO DO SO MAY RESULT IN COSTLY ENGINE  
AND/OR SYSTEM DAMAGE!!!**

**\*\*\*IF UNSURE ABOUT INTAKE SYSTEM INSTALLATION PLEASE HAVE A  
REPUTABLE PERFORMANCE SHOP OR A LICENCED MECHANIC  
INSTALL THIS SYSTEM\*\*\***

**\*\*\*FOR YOUR SAFETY, ALLOW ENGINE TO COOL FOR AT LEAST AN  
HOUR BEFORE BEGINNING INSTALLATION\*\*\***

**\*\*\*PLEASE CHECK AND MAKE SURE ALL HARDWARE IS PRESENT  
BEFORE INSTALLATION. PARTS LIST ON LAST PAGE\*\*\***

**TOOLS REQUIRED**

**Socket wrench,  
10mm Socket  
6" extension  
Flathead screwdriver, Philips Screwdriver  
10mm box wrench  
Needle nose pliers, channel pliers**

**REMOVAL OF STOCK INTAKE AND INSTALLATION OF INTAKE SYSTEM**

1. **Disconnect battery.**
2. **Remove engine cover by pull up on it evenly.**
3. **Unplug MAF sensor and mounting clip from air box.**
4. **Locate and remove one (1) 10 mm bolt on OEM intake tube mounting bracket. (photo A)**
5. **Using pliers remove the clamp on the PCV hose to the intake and dislodge that hose.**
6. **Loosen both clams on intake tube and remove the OEM intake tube.**
7. **Unclip and remove upper intake box**
8. **Locate two (2) 10mm bolts holding down the stock intake box and remove them. (photo B)  
Before pulling the lower intake box all the way out be sure to disconnect the MAF sensor  
harness retaining clip. (photo C)**

9. Gently push down on the center of the nine (9) clips that hold down the stock cooling panel. (photo D)
10. Locate and remove the two (2) bolt shown. (photo E) Put them aside as they will be re used.
11. Take heatshield and provided brackets and assemble as shown. (photo F) Note: one tab has a slight bend to it, that must be place in the location specified in photo F
12. Take 13" piece of heatshield trim and apply it as show in photo F.
13. Carefully drop heatshield into place and secure it using two (2) oem bolts and one (1) m6 bolt provided in kit (photo G)
14. Locate and remove the one (1) bolt securing stock intake tube mounting bracket. Remove this bracket. Install provided vibration mount. Be sure to tighten this mount completely until it sits flush with the engine. (photo H)
15. Take 30" piece of heatshield trim and install as shown. (photo I) Then carefully reinstall cooling panel and all clips
16. Install DC Sports Filter and tighten securely to intake pipe
17. Install reducing coupler onto TB piping.
18. Carefully place DC Sport intake tube into place. Make sure mounting bracket is lined up with the vibrations mount and tighten it down. **DO NOT OVER TIGHTEN**
19. Re install PCV hose.
20. Tighten down both clamps on reducing coupler.
21. Carefully remove MAF sensor from OEM air box and install onto DC Sports Intake Pipe using provided M4 Allen bolts. Be careful and do not tear o-ring.
22. Reinstall MAF connect.
23. Reinstall engine cover.
24. **DOUBLE CHECK ALL WORK! MAKE SURE NOT HARDWARE HAS BEEN LEFT LOOSE.**
25. Reconnect battery.

**\*\*\*LIMITED 3 YEAR WARRANTY\*\*\***

DC Sports only warranty's intake systems due to poor workmanship. We do not cover normal wear and tear damages due to misuse or abuse. We do not warranty the finish of intake tubes.

Warranty covers the original owner of intake system by having proof of purchase. We have the right to void all warranty if you cannot provide the information needed by DC Sports. DC Sports does not cover any cost for installation or removal of products.

**\*\*\*CAUTION\*\*\***

DC Sports does not assume any liability for damage caused by rain or floods causing the intake system for taking on water. We recommend that you remove the cold air intake system due to wet conditions.

**\*\*\*WARRANTY CLAIMS\*\*\***

All warranty claims must be shipped prepaid by the customer to DC Sports. Warranty claims must have an RMA (Return Merchandise Authorization) number on the box or package will be refused and sent back to the shipper.

## PARTS LIST

Quantity	Part Number	Part Description
1	DCSRP4900	SRI4900 Intake tube
1	DCHS4900	SRI4900 Heatshield
1	<i>DCCP250225</i>	<i>2.5" - 2.25" reducing coupler</i>
2	DCCL250	2.5" Clamp
1	DCF-300	3" DC sports filter pack
1	DCVM6	M6 M/M Vibra mount
2	DCAS4	4mm Allen Machine screw
1	RHBA-M6x1.00x15	M6x1.00x 15mm long bolt
1	WA-M6	M6 washer
1		Heatshield Hardware kit
30"	DCTS TRIM	Heatshield Trim
13"	DCTS TRIM	Heatshield Trim
1	DCDECAL	DC Sports DECALS
1	DCBADGE-L	DC Badge Large



Photo A



Photo B

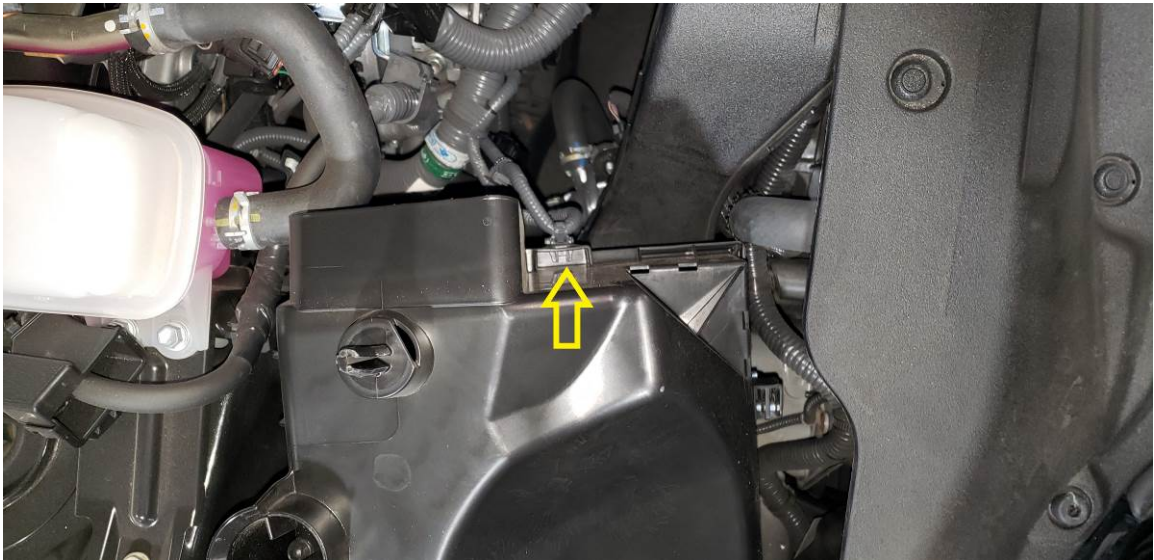


Photo C

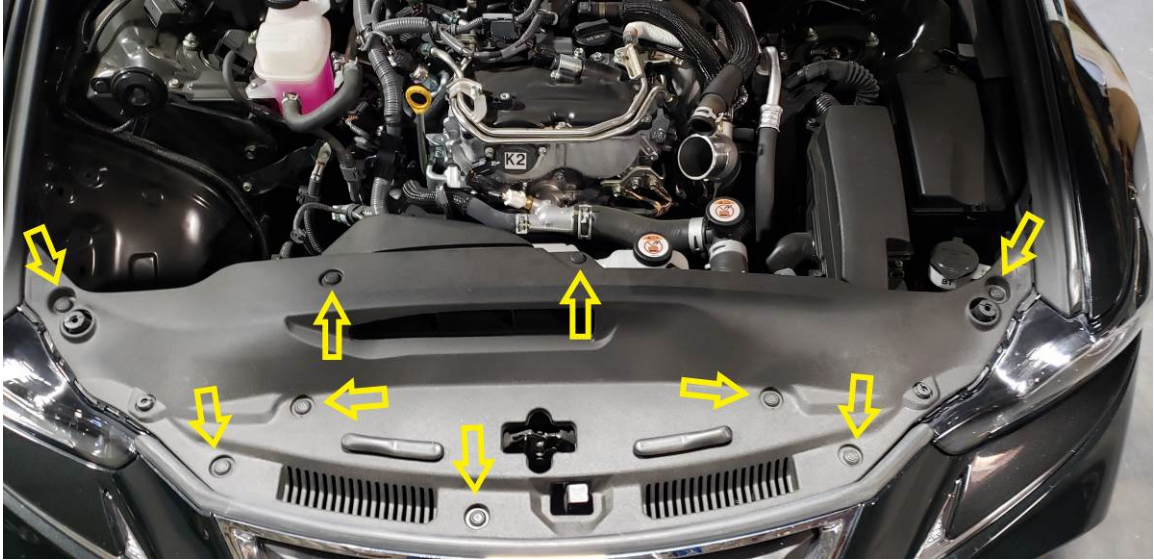


Photo D

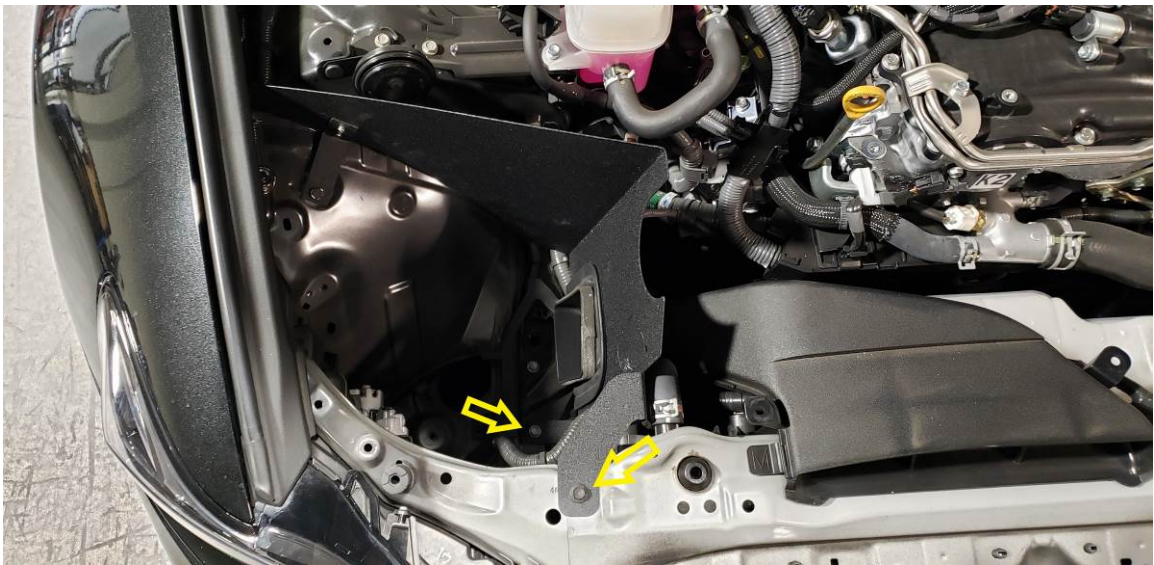
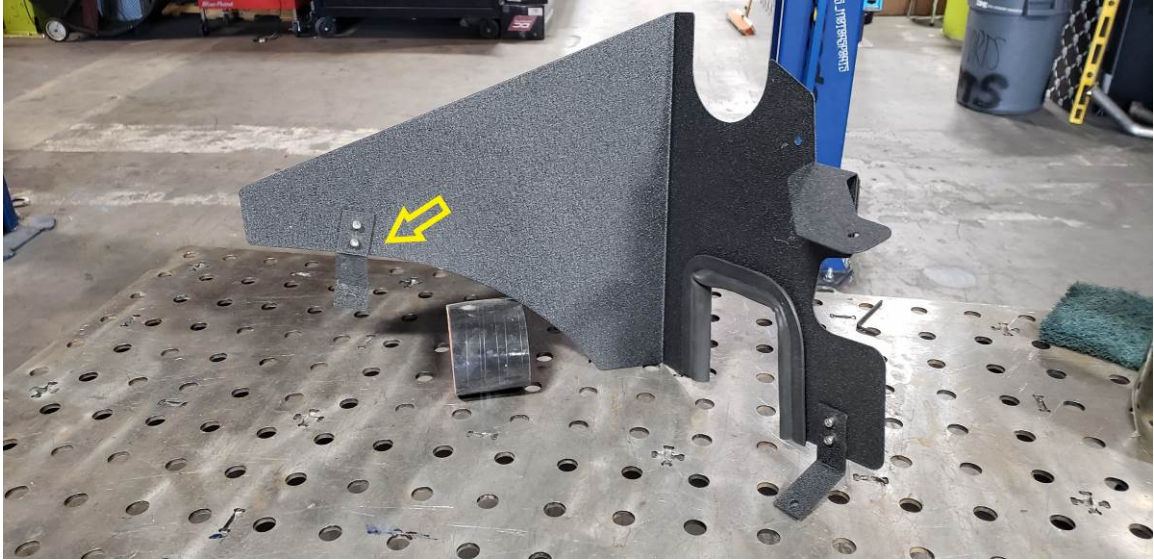
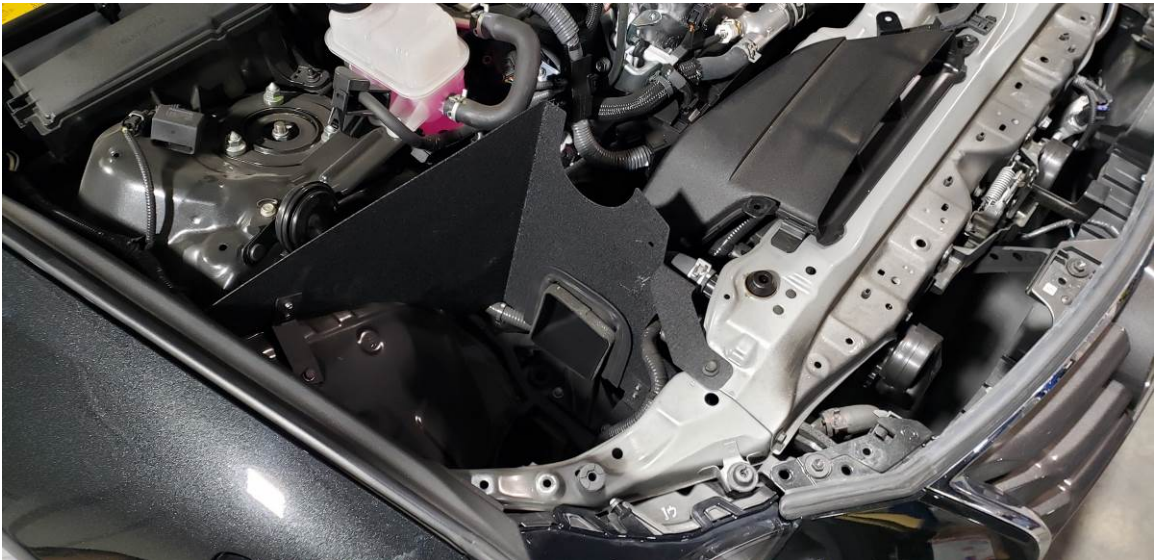


Photo E



**Photo F**



**Photo G**

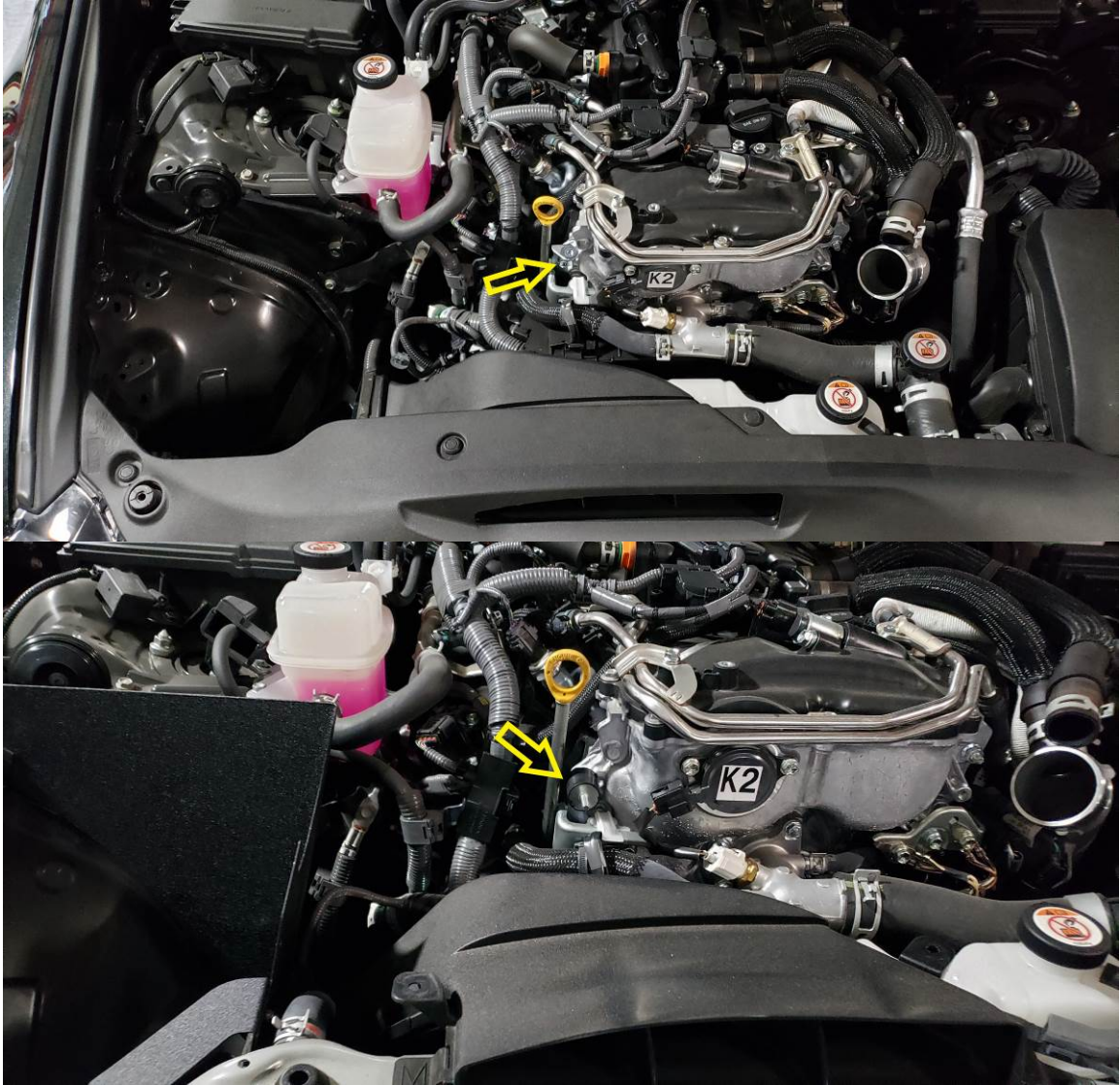
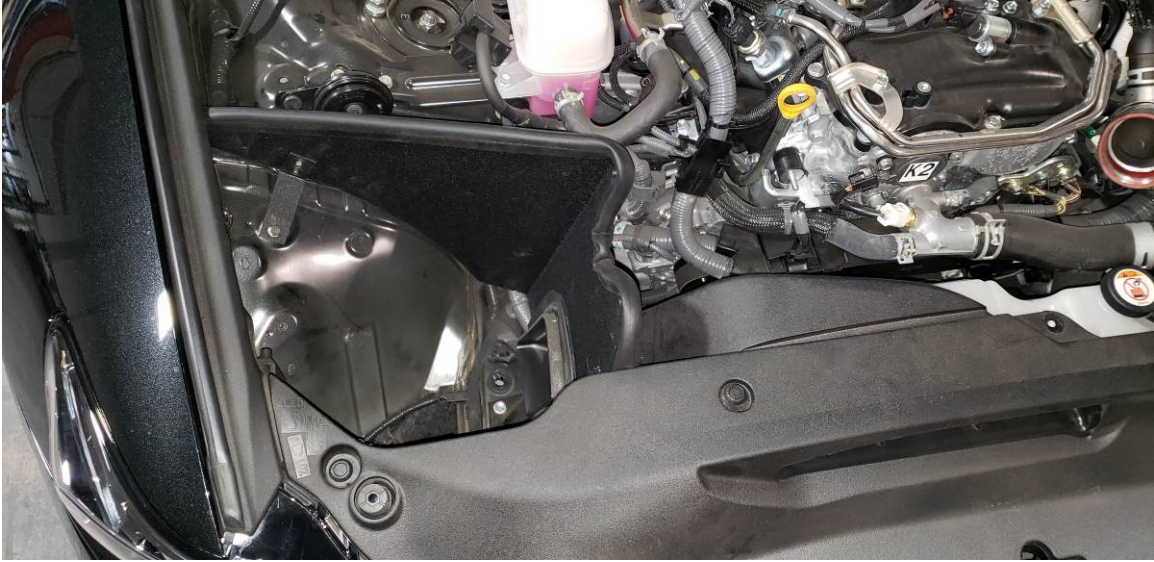


Photo H



**Photo I**



**THANK YOU FOR CHOOSING DC SPORTS**