

B58 F-SERIES



# B58 INLET INSTALL



**TURTLE**  
Expert Auto Mechanic



Our B58 inlet is the final step after the intake for allowing the turbo to work at full capacity on the inlet side. Not only will it increase performance, but it will turn up the volume on your screaming turbo!

× × × ×

**30-60  
MINUTE**

Install time

**DIFFICULTY**

**EASY**



**TURTLE**  
Expert Auto Mechanic

## PRO TIP

Allow the vehicle to cool down before doing this install

× × × ×

## Tools Required

- Metric Socket Set
- Screw Driver
- Pick Tool

× × × ×



**TURTLE**  
Expert Auto Mechanic



# 01

## UNPLUG THE MAF SENSOR

- You will need to depress the tab, and pull the MAF plug out.



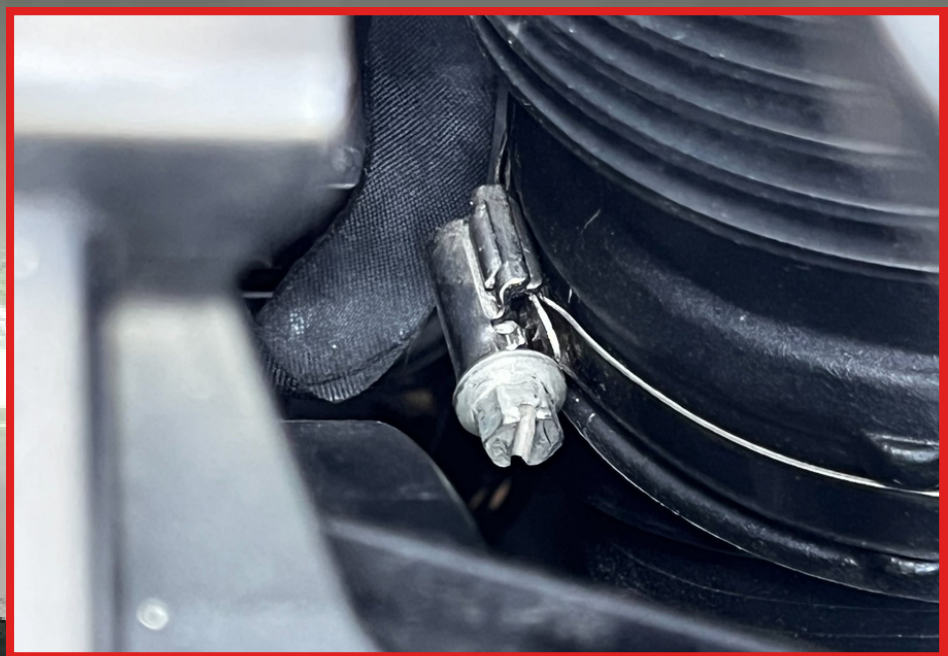
**TURTLE**  
Expert Auto Mechanic



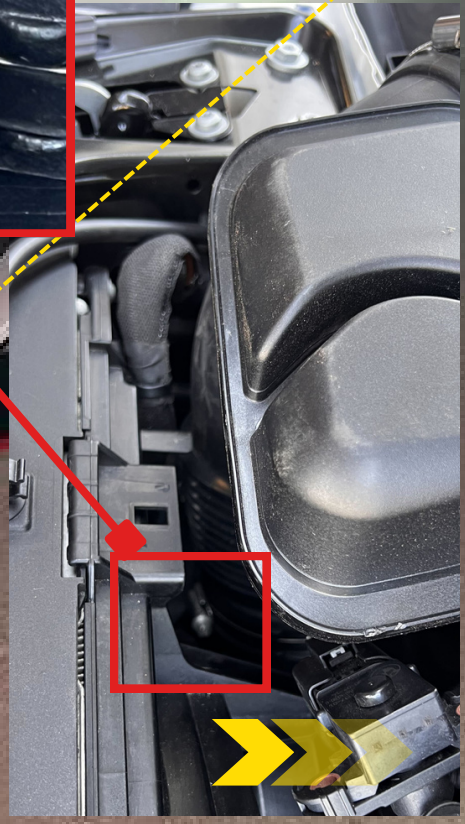


## LOOSEN THE LOWER HOSE CLAMP

- 8mm Screws in red



# 02



**TURTLE**  
Expert Auto Mechanic

# 03

## REMOVE THE INTAKE/INLET

- Pull directly up on the entire airbox
- It is held on by the two grommets below



**TURTLE**  
Expert Auto Mechanic





## REMOVE VACUUM HOSE



- Depress the circular clip on the sides and pull out



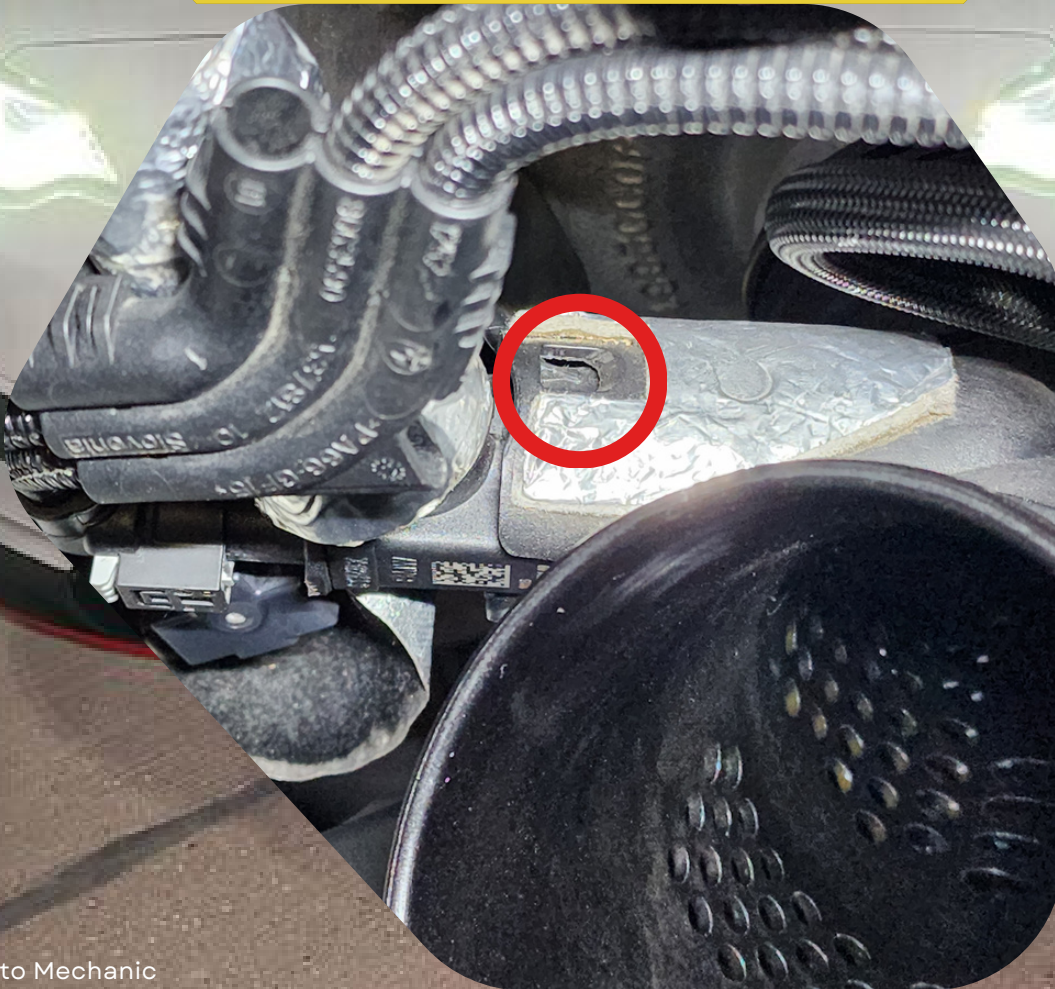
**TURTLE**  
Expert Auto Mechanic



# 05

## REMOVE THE PCV HOSE

- With a pick, depress the clip circled in red
- On the exact opposite side there will be another clip you will also need to depress with a different pick



**TURTLE**  
Expert Auto Mechanic





# 08



## REMOVE INLET



- Remove C-clip
- Pull Inlet out of the engine bay



**TURTLE**  
Expert Auto Mechanic



# 06

## PREINSTALL ADAPTERS

- Put in the PCV, Turbo and Intake adapters



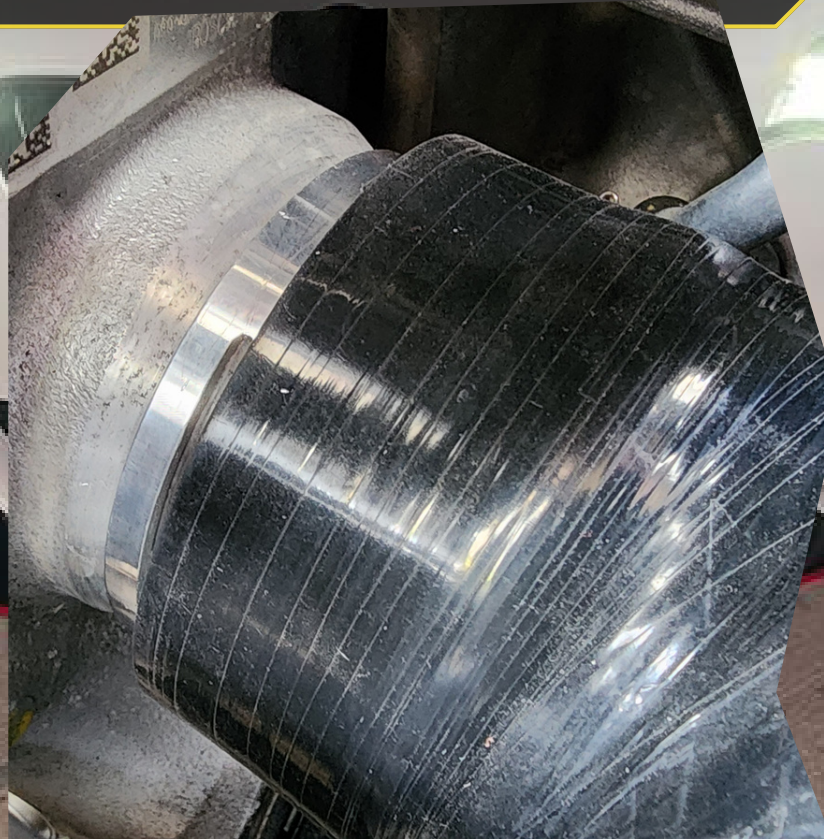
**TURTLE**  
Expert Auto Mechanic



# 07

## INSTALL TURBO ADAPTER

- With the Aluminum Turbo Adapter installed into the small end of the inlet, apply a clamp to this adapter and tighten it.
- Install the OEM clip onto the aluminum Turbo Adapter
- Install Inlet Assembly onto the turbo ensuring the clip is fully seated.



**TURTLE**  
Expert Auto Mechanic



# 08



## INSTALL VACUUM HOSE



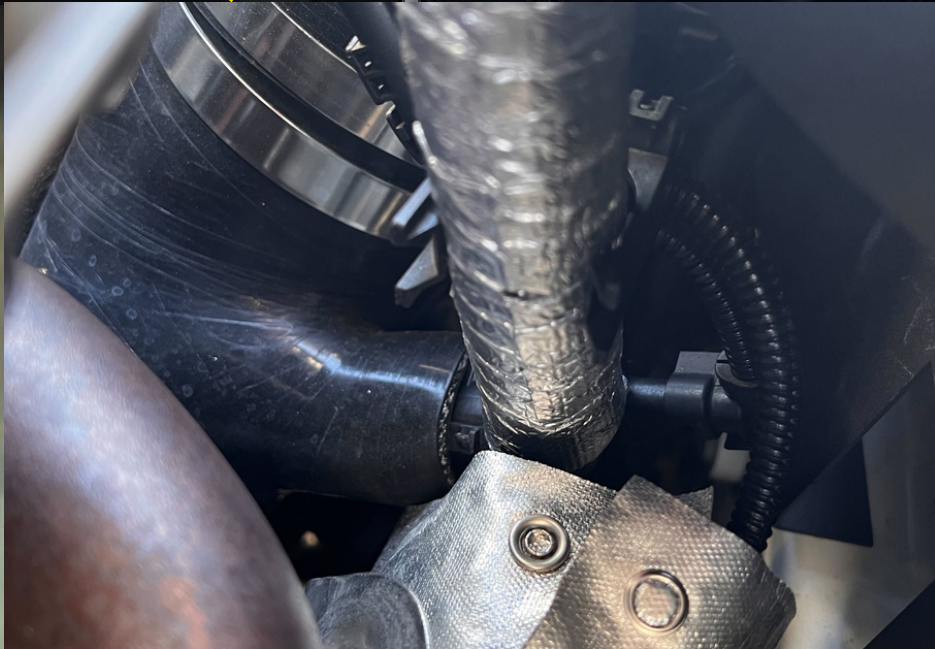
- Secure the vacuum hose adapter with the smallest clamp.
- Clip Vacuum hose onto adapter.



**TURTLE**  
Expert Auto Mechanic



# 09



## RECONNECT THE PCV ACTUATOR CONNECTION

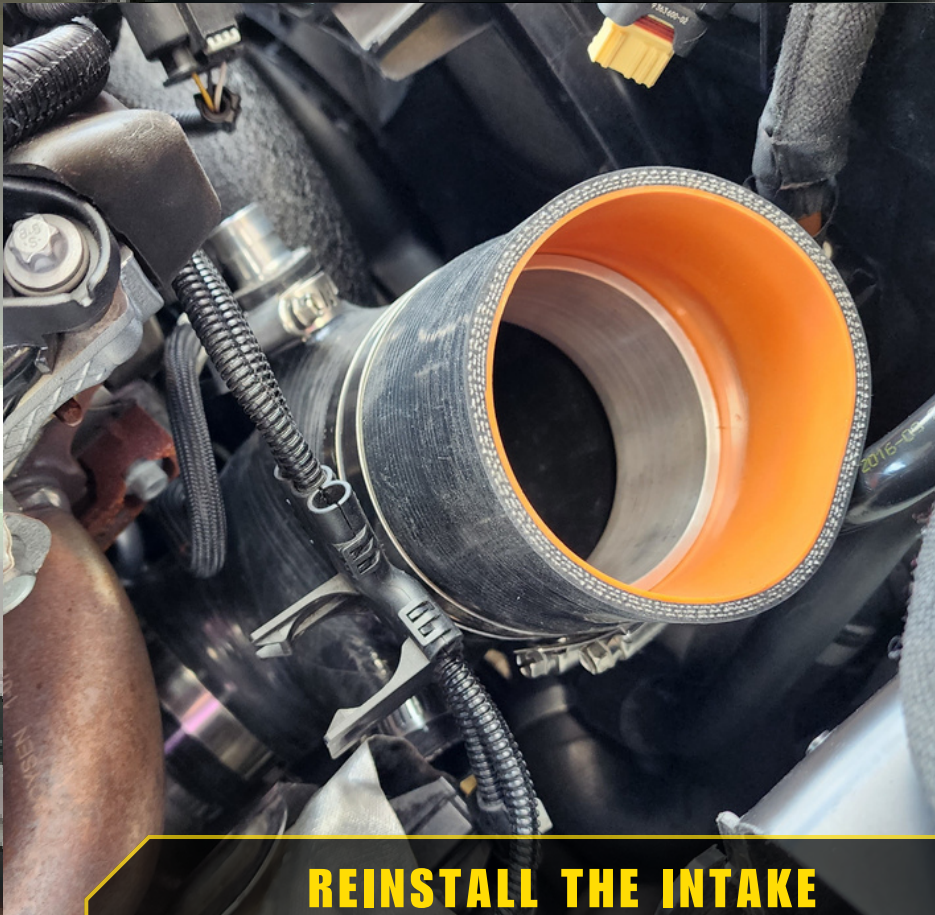
The PCV connection will insert directly into the turbo inlet hose. Secure this connection with the second smallest clamp.



**TURTLE**  
Expert Auto Mechanic



# 10



## REINSTALL THE INTAKE



- The ARM Turbo Inlet can connect to either the OEM intake or the ARM Intake.
- For either the OEM or ARM intake you will install the aluminum intake adapter into the inlet and secure it with the included clamp.
- If installing the ARM Intake you will want to add the silicone coupler included with the intake kit.



**TURTLE**  
Expert Auto Mechanic



**CONGRATULATIONS!**

Enjoy your B58 Inlet

× × × × × × × ×

**WAS THIS HELPFUL?**

Email in to [GETARMED@ARMMOTORSPORTS.com](mailto:GETARMED@ARMMOTORSPORTS.com) for any additional help.



**TURTLE**  
Expert Auto Mechanic

Save For Later 