

VEROBOARD®

LED Type: VBDSH-2835-27/65-1296-24-NS
Colour: 2700K • 6500K

Job Name: _____

Distributor: _____

Type: _____



DESCRIPTION

Discover the limitless possibilities of lighting with our innovative 2700K (Soft White) and 6500K (Cool White) Flexible LED Light Sheet. Thin, bendable, and easily shaped, it adapts flawlessly to various uses including signage, backlighting, trade shows, displays, and panels. Effortlessly create captivating designs by bending it into intricate shapes, and with cut lines in both directions, odd shapes are a breeze to achieve.

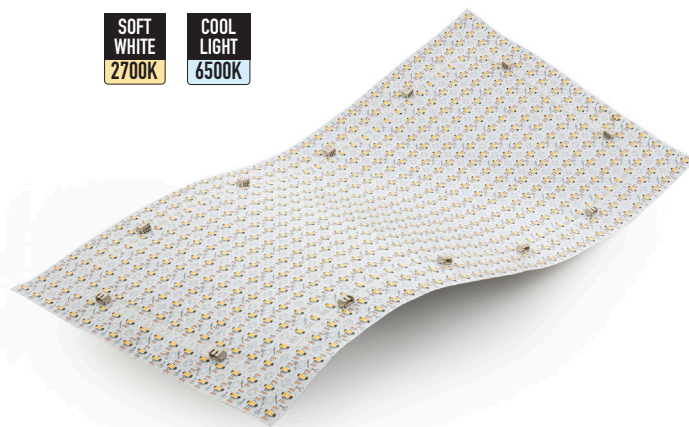
Installing our LED sheet is a breeze with slot-in and push-it electrical connections, wired and ready to go within minutes. Long lifespan of over 50,000 hours, and a high color rendering index (CRI). Illuminate curved objects like columns and point-of-sale displays with ease, opening up a world of creative possibilities.

SPECIFICATIONS

Model:	VBDSH-2835-27/65-1296-24-NS
Color Temperature:	2700K (Soft White) • 6500K (Cool White)
LED Type:	2835 SMD
LED Qty:	1296 LEDs
Input Voltage (VF):	24V DC
Brightness:	2180Lm
Power:	46W
Lifespan:	>50,000 hours
IP Rating:	IP20
Rendering Index (Ra):	CRI>90+
Beam Angle:	120°
Dimmable:	Yes
Cut Size:	Every 16.50mm (0.65")
Installation Method:	3M Double Sided Tape
Operating Temperature:	-15°C to +40°C
Silicon Bumper Dimensions:	Ø 12mm x H 7.75mm (Ø 0.4" x H 0.3")
Connector Size:	61mm (2.4") <i>Sheet to Sheet</i> 150mm (6") <i>Sheet to Power</i> 20AWG
Certificates:	UL / RoHs

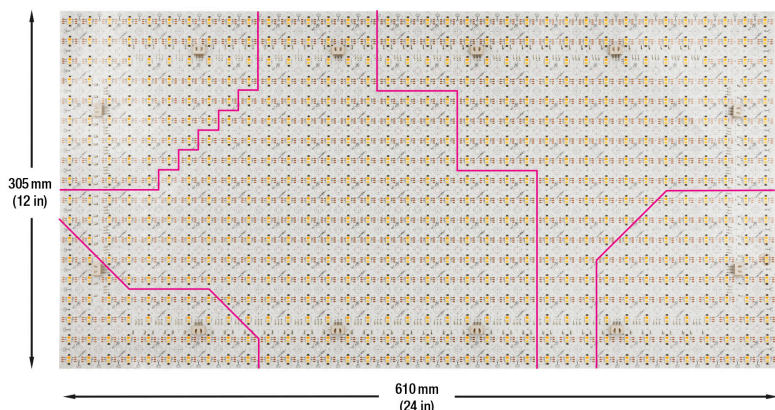


Transform the ambiance of your interior spaces, including walls/floors, with these LED sheets, creating a stunning and captivating look.



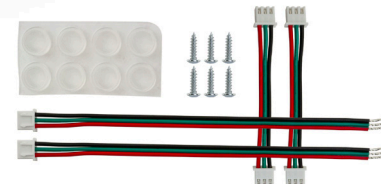
DIMENSIONS

Free cut in any direction



Package also includes:

- 2 x 2.4" Connectors
- 2 x 6" Connectors
- 6 x Screws
- 8 x Silicon Bumpers



Disclaimer:

The data and information contained in this specification sheet are subject to change without notice; the ratings supplied are provided based on the product manufacturer. The information contained in this specification sheet should not be considered a warranty, expressed or implied, including, but not limited to, a warranty of merchantability or fitness for a particular purpose. In no event shall Veroboard be liable for any incidental or consequential damages resulting from the use, misuse, or inability to use the product. This exclusion applies regardless of whether such damages are sought based on breach of warranty, breach of contract, negligence, strict liability in tort, or any other legal theory.

For more information about our products and services, please visit our website: www.veroboard.com

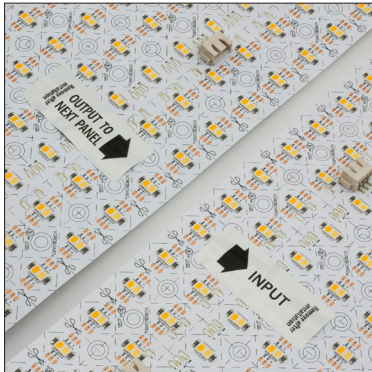
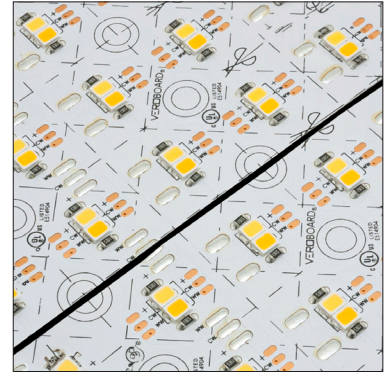
[veroboard.com](http://www.veroboard.com)



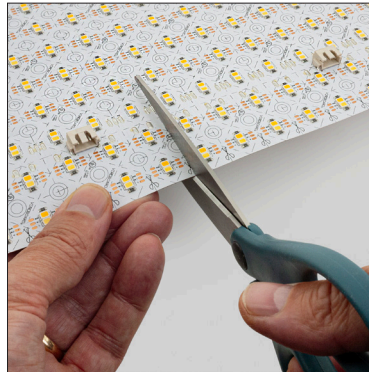
Installation:

Prior to installing the LED sheets, please take note and read each instruction attentively.

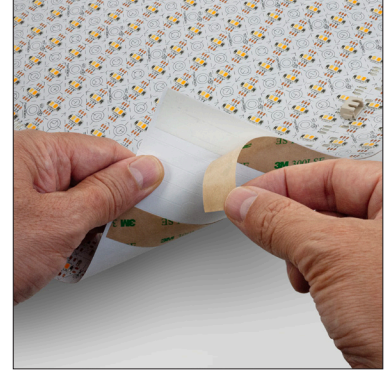
ATTENTION: To prevent electrical shortages, leave a 2mm gap between each LED sheets during assembly.



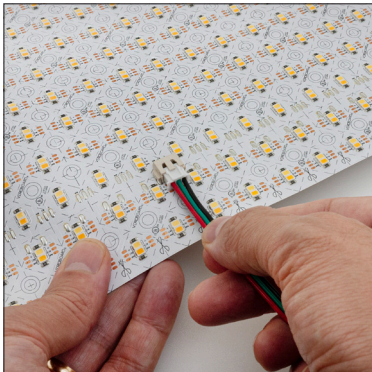
Ensure to check the polarity of the connectors; otherwise, the light will not turn on (pay attention to the input and output decals on each sheet). Those decals must be removed after installation.



Easily tailor the LED sheet to suit your requirements by cutting it in any direction.



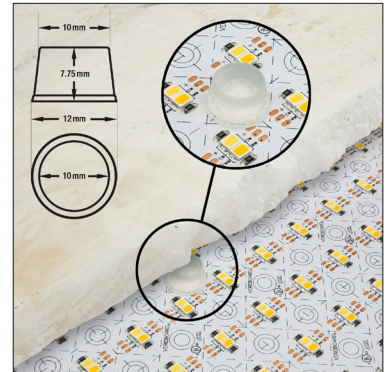
The LED sheet comes with 3M double-sided tape backing, making it easy to apply on flat or curved surfaces such as wood, metal, stone.



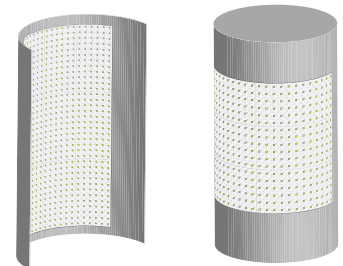
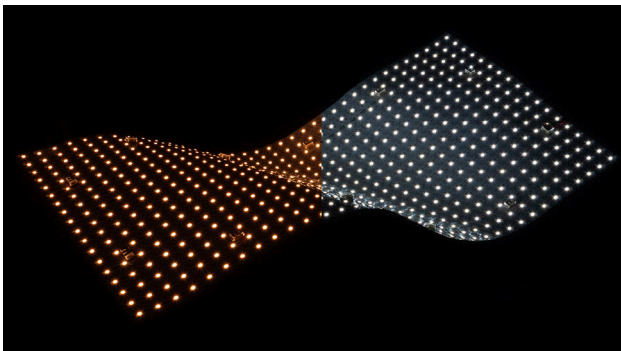
Use the 6" cables to link the LED sheet to the power supply.



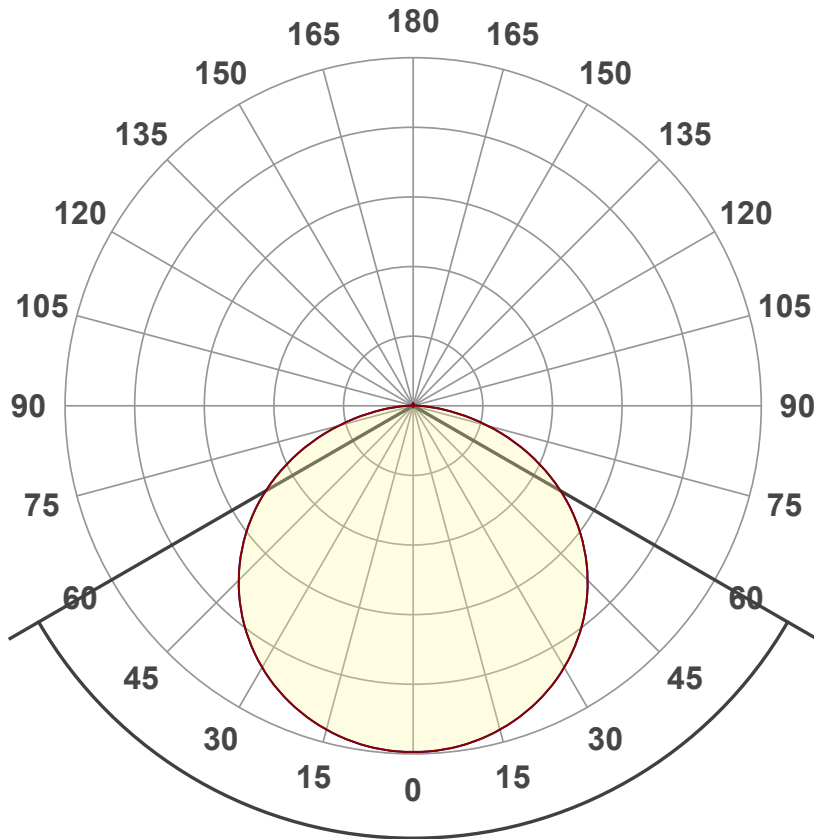
Use the 2.4" connectors to interconnect the LED sheets with each other.



Employing silicon bumpers to prevent direct contact between the stone marble and the LED sheet.



The flexibility of the LED sheet allows you to bend it on all directions.



Beam angle **120°**

Light efficiency:

85 Lumen/Watt

Light quality:

CRI: 95.2

Color temperature:

2700 K

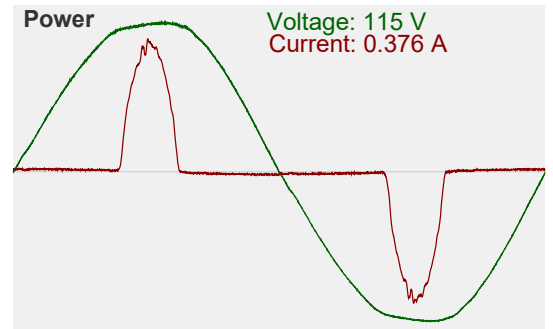
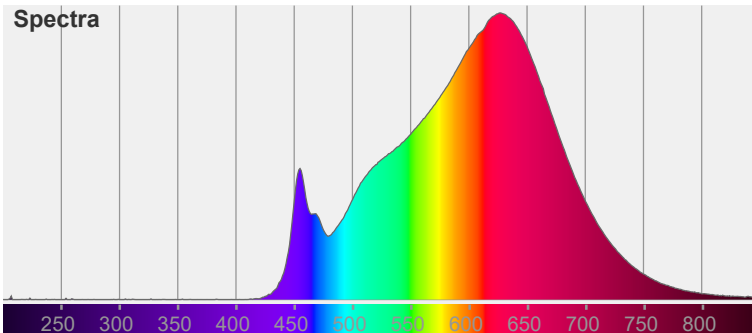
Output: 2180 lm

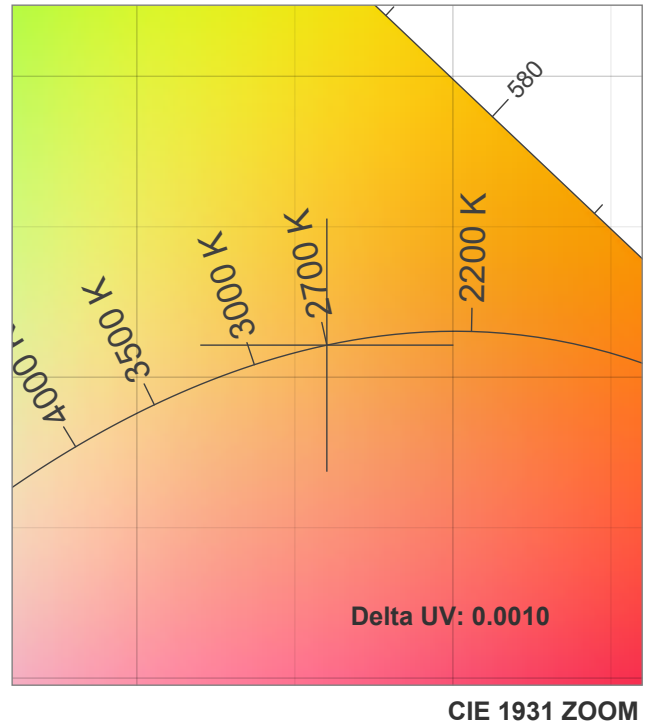
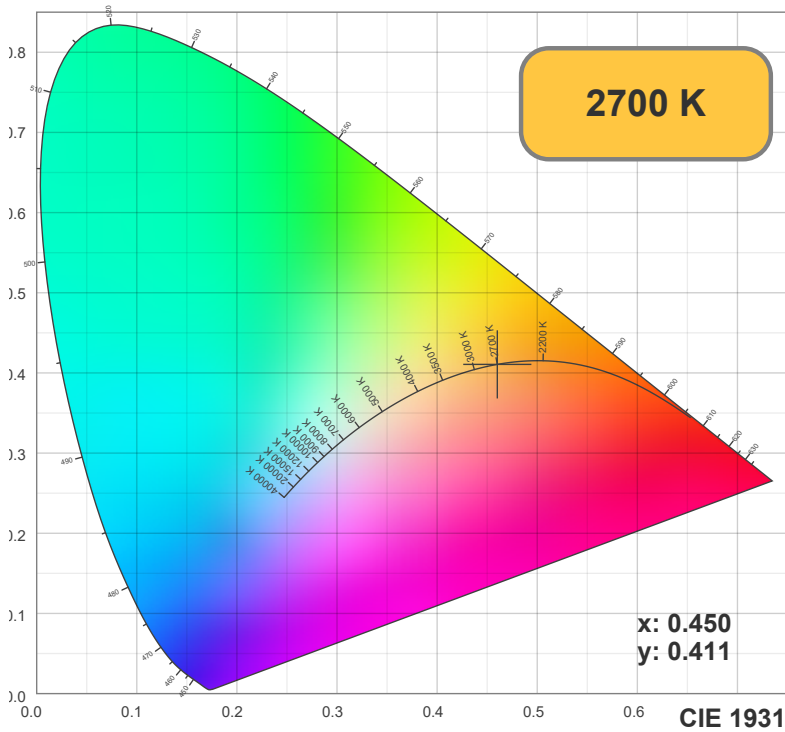
Peak: 703 cd

Power: 25.5 W

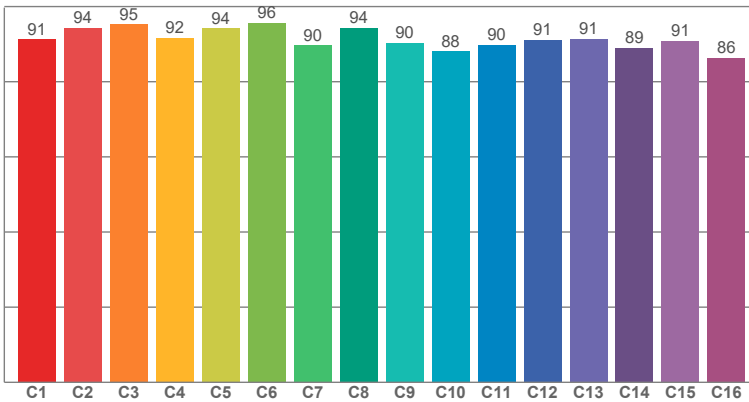
PF: 0.59

2 PLANES

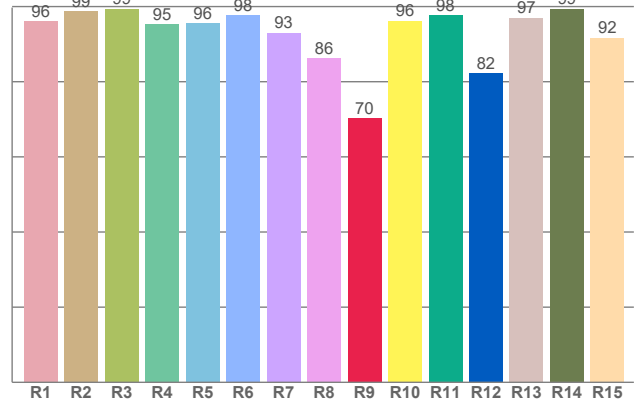




TM30: 91.5



CRI: 95.2 (R1-R8)



CRI R values, only R1-R8 are used to calculate final CRI value

R1	R2	R3	R4	R5	R6	R7	R8	R9	R10	R11	R12	R13	R14	R15
95.98	98.70	99.41	95.27	95.54	97.58	93.04	86.15	70.23	96.19	97.63	82.18	96.96	99.31	91.71

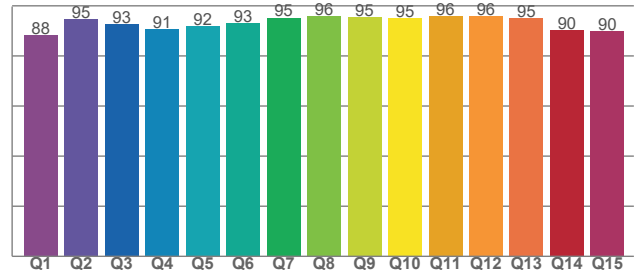
TM30 C values, 16 binned values out of total of 99 C values

C1	C2	C3	C4	C5	C6	C7	C8	C9	C10	C11	C12	C13	C14	C15	C16
91.21	94.33	95.27	91.57	94.12	95.57	89.61	94.30	90.28	88.00	89.73	91.07	91.33	88.98	90.87	86.35

CQS Q values

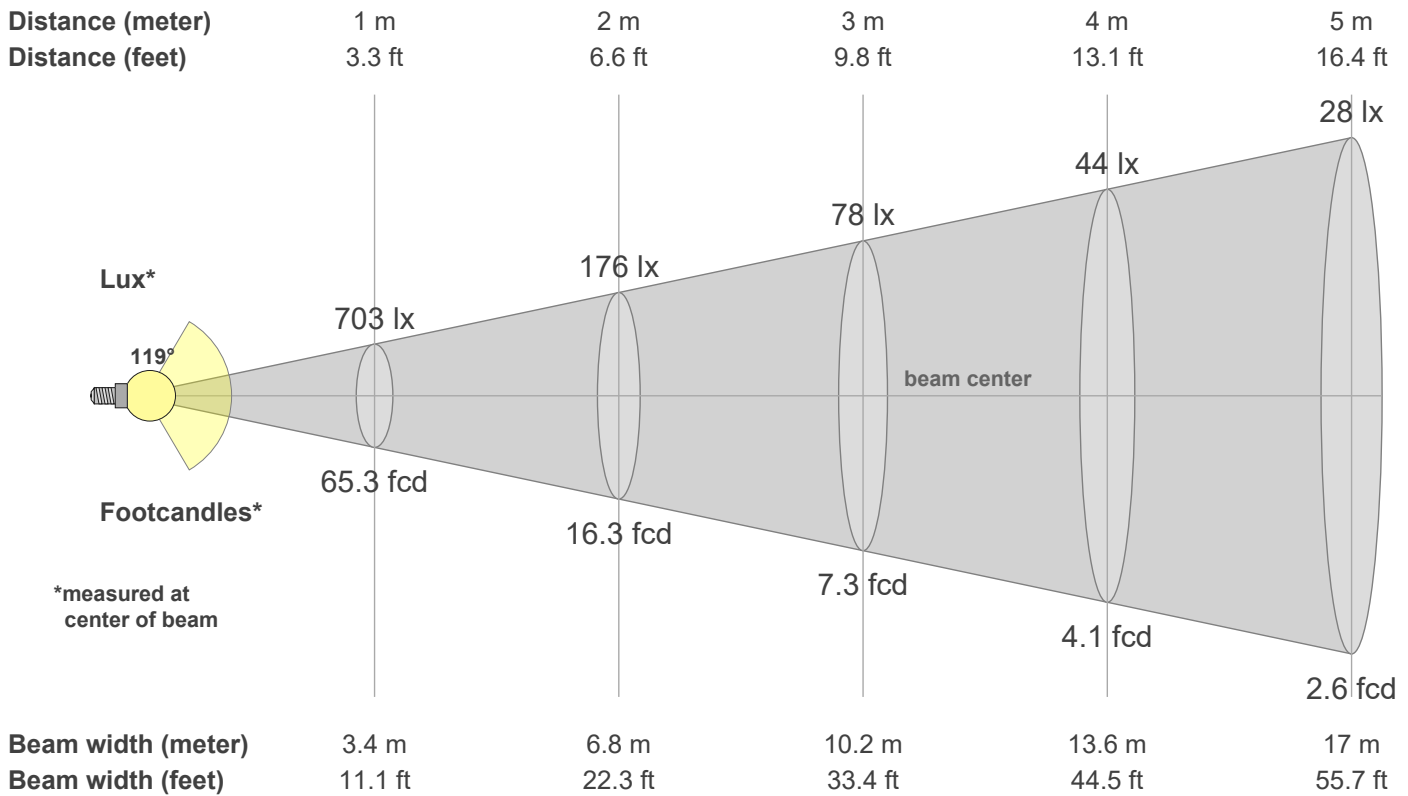
Q1	Q2	Q3	Q4	Q5	Q6	Q7	Q8	Q9	Q10	Q11	Q12	Q13	Q14	Q15
88.43	94.51	92.66	90.80	91.69	93.10	95.26	95.73	95.45	95.04	96.01	95.79	95.02	90.14	89.95

CQS: 92.7



Color parameters

CCT	CRI	CRI R9	TM30 Rf	TM30 Rg	CQS	x	y	u	v	Duv
2700 K	95.2	70.2	91.5	97.1	92.7	0.5	0.4	0.3	0.4	0.0010



Intensities in 0° c-plane

0°	5°	10°	15°	20°	25°	30°	35°	40°	45°	50°	55°	60°	65°	70°	75°	80°	85°	90°	95°
703	701	693	681	663	641	613	581	543	501	454	402	346	285	222	157	96	44	13	2
100%	100%	99%	97%	94%	91%	87%	83%	77%	71%	65%	57%	49%	41%	32%	22%	14%	6%	2%	0%

Intensities in 90° c-plane

0°	5°	10°	15°	20°	25°	30°	35°	40°	45°	50°	55°	60°	65°	70°	75°	80°	85°	90°	95°
703	701	693	681	663	641	613	581	543	501	454	402	346	285	222	157	96	44	13	2
100%	100%	99%	97%	94%	91%	87%	83%	77%	71%	65%	57%	49%	41%	32%	22%	14%	6%	2%	0%

Intensities in 180° c-plane

0°	5°	10°	15°	20°	25°	30°	35°	40°	45°	50°	55°	60°	65°	70°	75°	80°	85°	90°	95°
703	701	693	681	663	641	613	581	543	501	454	402	346	285	222	157	96	44	13	2
100%	100%	99%	97%	94%	91%	87%	83%	77%	71%	65%	57%	49%	41%	32%	22%	14%	6%	2%	0%

Intensities in 270° c-plane

0°	5°	10°	15°	20°	25°	30°	35°	40°	45°	50°	55°	60°	65°	70°	75°	80°	85°	90°	95°
703	701	693	681	663	641	613	581	543	501	454	402	346	285	222	157	96	44	13	2
100%	100%	99%	97%	94%	91%	87%	83%	77%	71%	65%	57%	49%	41%	32%	22%	14%	6%	2%	0%

Beam angle 50%	Field angle 10%	Cutoff angle 2.5%	Intensity ratio in 120° cone	Intensity ratio in 90° cone
119.0°	164.3°	177.4°	76.4%	51.1%