



LED TYPE: FS-2835-XXXX-60-12-NS

COLOR: 3000K • 6000K

Specifications

Model No.:	FS-2835-xxxx-60-12-NS*
Input Voltage:	12V DC
Wattage:	7W per meter (2W/ft)
LED Qty:	60 LEDs per meter
Brightness:	721-820Lm/m (220-250Lm/ft)
Available Color	3000K (Warm White)
Temperatures:	6000K (Cool White)
IP Rating:	IP20 (Indoor use only)
Rendering Index:	CRI>98
Dimmable:	Yes
Dimensions:	5,000mm x 12mm x 1.5mm (196.8in x 0.47in x 0.05in)
Certification:	UL / RoHS



*Note: xxxx in the part No. indicate Color Temperature

3000K (Warm White)

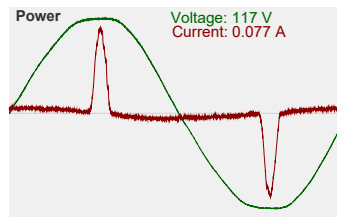
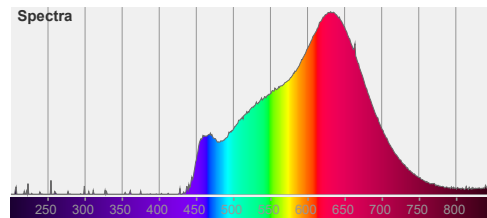
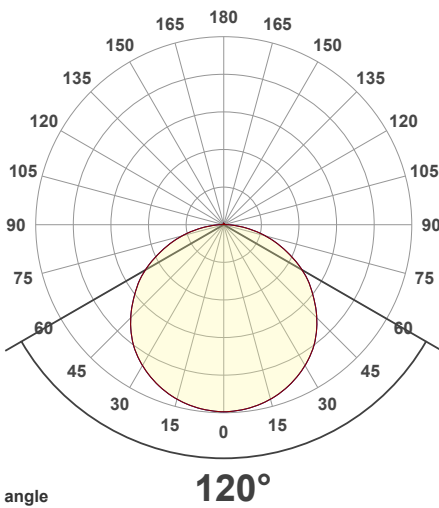
SKU: 666561409852

6000K (Cool White)

SKU: 666561409838

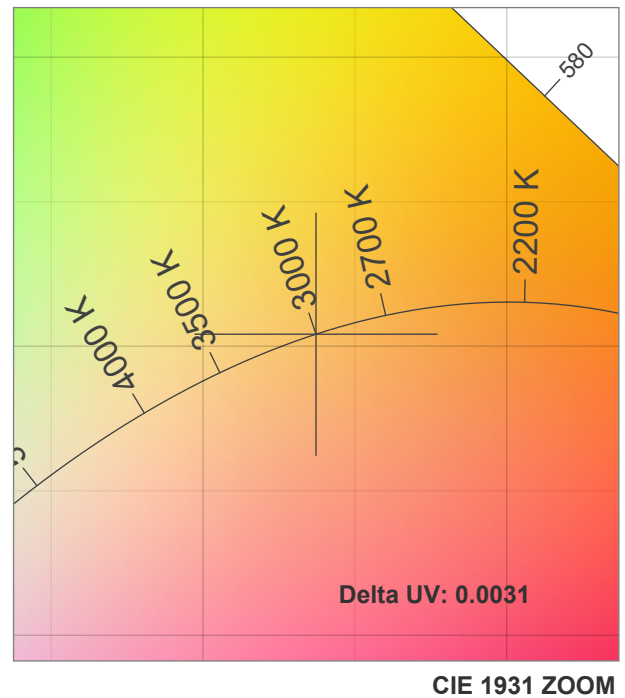
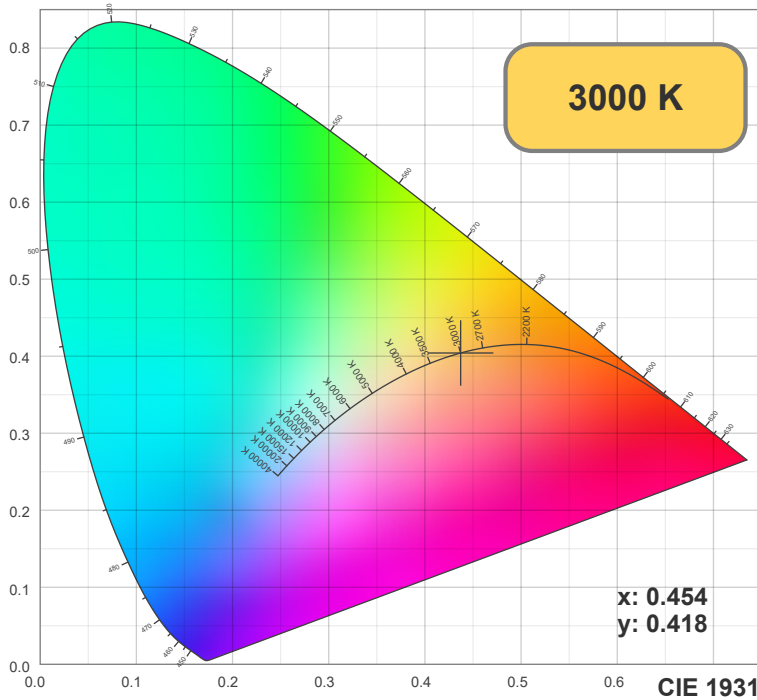
Features

- Strip lights are best suited for various applications, including signage, interior lighting, accent lighting, and under cabinet lighting.
- They are also suitable for installations over cabinets, in landscapes, bars, clubs, architectural structures, entertainment venues, and any other areas where durable and environmentally-friendly illumination is required.
- Each roll of strip lights undergoes meticulous hand-testing to ensure high quality. Additionally, they are UL Listed for Class 2 low voltage luminaires and fixtures, and they are RoHS and CE approved.
- Our strip lights utilize SMD LED technology with a copper base and gold wire, resulting in efficient heat dispersion, an extended lifespan, and minimal luminous decay.
- All of our LEDs meet the LM80 test standard.
- Our flexible PCBs are of exceptional quality, featuring double layers with a minimum of 2 ounces of copper, or 3 ounces in specific models. This ensures minimal voltage drop and effective heat dispersion.

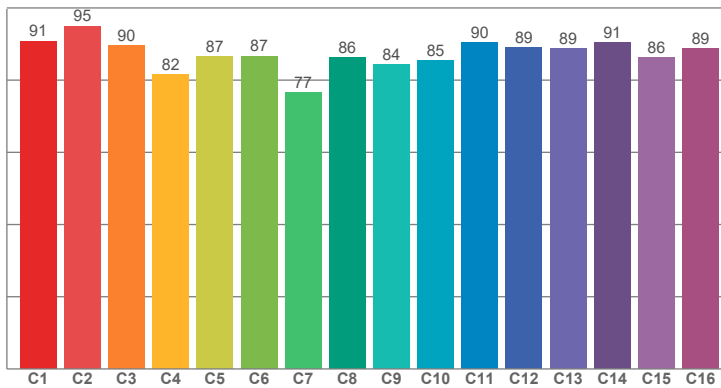


Disclaimer

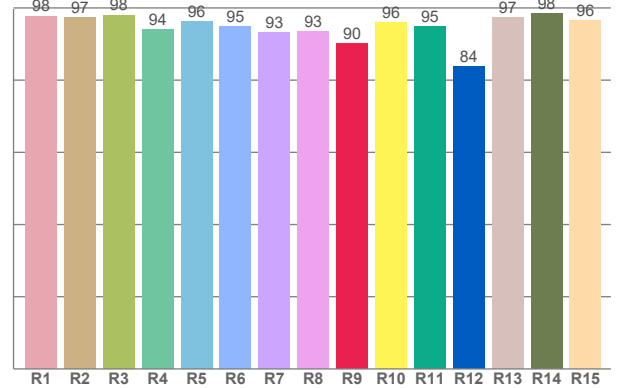
The data and information contained in this specification sheet are subject to change without notice; the ratings supplied are provided based on the product manufacturer. The information contained in this specification sheet should not be considered a warranty, expressed or implied, including, but not limited to, a warranty of merchantability or fitness for a particular purpose. In no event shall LED Lights and Parts be liable for any incidental or consequential damages resulting from the use, misuse, or inability to use the product. This exclusion applies regardless of whether such damages are sought based on breach of warranty, breach of contract, negligence, strict liability in tort, or any other legal theory.



TM30: 87.6



CRI: 95.7 (R1-R8)



CRI R values, only R1-R8 are used to calculate final CRI value

R1	R2	R3	R4	R5	R6	R7	R8	R9	R10	R11	R12	R13	R14	R15
97.76	97.46	98.04	94.14	96.33	94.79	93.26	93.46	90.12	95.86	94.86	83.88	97.28	98.47	96.42

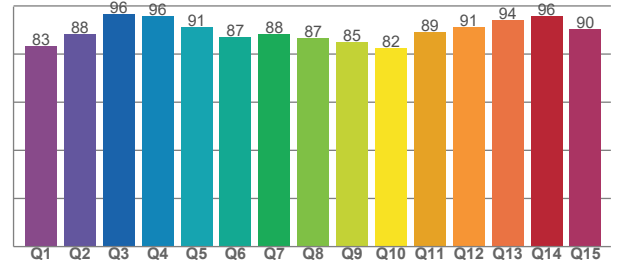
TM30 C values, 16 binned values out of total of 99 C values

C1	C2	C3	C4	C5	C6	C7	C8	C9	C10	C11	C12	C13	C14	C15	C16
90.83	94.99	89.71	81.66	86.54	86.67	76.68	86.31	84.31	85.47	90.40	88.98	88.86	90.51	86.25	88.68

CQS Q values

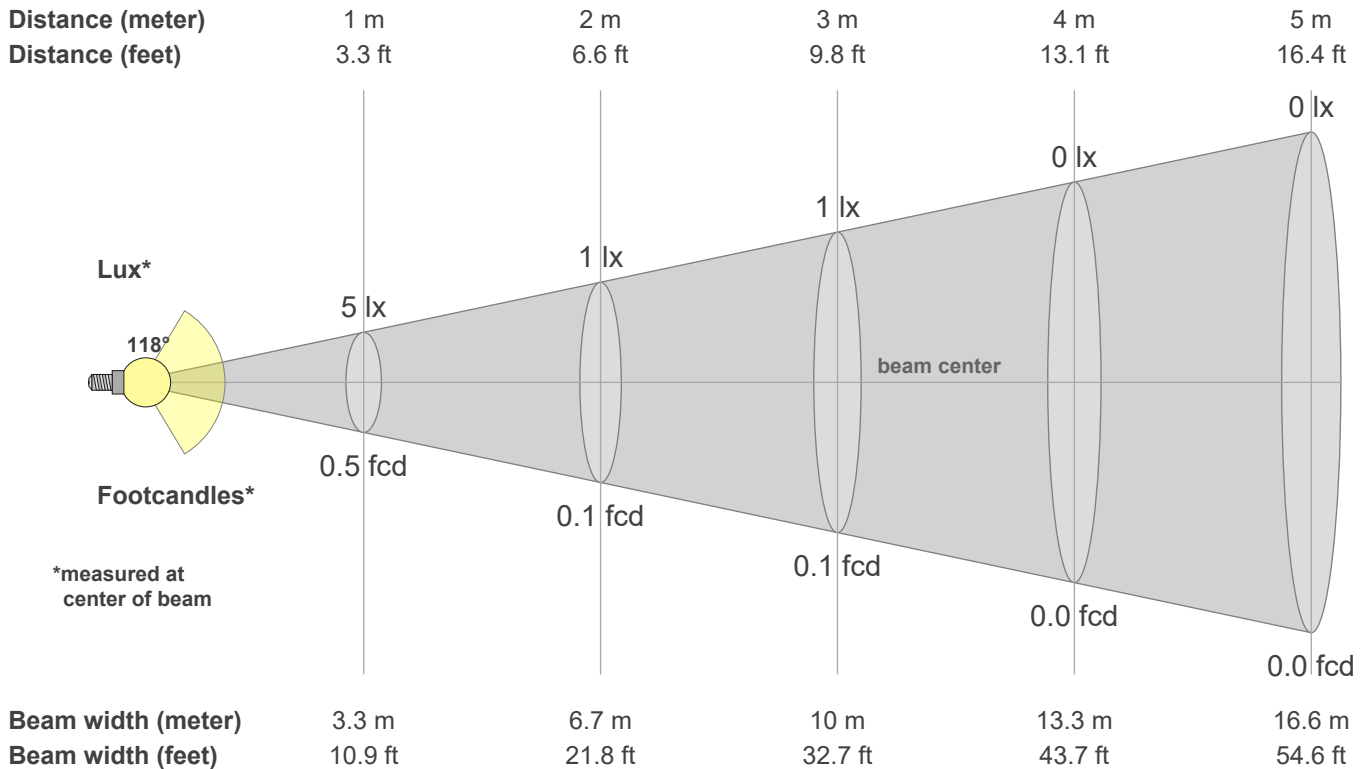
Q1	Q2	Q3	Q4	Q5	Q6	Q7	Q8	Q9	Q10	Q11	Q12	Q13	Q14	Q15
83.27	88.14	96.43	95.74	91.26	86.98	88.39	86.71	84.96	82.48	89.02	91.13	94.18	95.66	90.43

CQS: 88.6



Color parameters

CCT	CRI	CRI R9	TM30 Rf	TM30 Rg	CQS	x	y	u	v	Duv
3000 K	95.7	90.1	87.6	93.8	88.6	0.4	0.4	0.3	0.3	0.0031



Intensities in 0° c-plane

0°	5°	10°	15°	20°	25°	30°	35°	40°	45°	50°	55°	60°	65°	70°	75°	80°	85°	90°	95°
5.41	5.39	5.33	5.23	5.09	4.91	4.70	4.46	4.15	3.81	3.43	3.04	2.62	2.15	1.70	1.25	0.80	0.40	0.14	0.05
100%	100%	98%	97%	94%	91%	87%	82%	77%	70%	63%	56%	48%	40%	31%	23%	15%	7%	3%	1%

Intensities in 90° c-plane

0°	5°	10°	15°	20°	25°	30°	35°	40°	45°	50°	55°	60°	65°	70°	75°	80°	85°	90°	95°
5.41	5.39	5.33	5.23	5.09	4.91	4.70	4.46	4.15	3.81	3.43	3.04	2.62	2.15	1.70	1.25	0.80	0.40	0.14	0.05
100%	100%	98%	97%	94%	91%	87%	82%	77%	70%	63%	56%	48%	40%	31%	23%	15%	7%	3%	1%

Intensities in 180° c-plane

0°	5°	10°	15°	20°	25°	30°	35°	40°	45°	50°	55°	60°	65°	70°	75°	80°	85°	90°	95°
5.41	5.39	5.33	5.23	5.09	4.91	4.70	4.46	4.15	3.81	3.43	3.04	2.62	2.15	1.70	1.25	0.80	0.40	0.14	0.05
100%	100%	98%	97%	94%	91%	87%	82%	77%	70%	63%	56%	48%	40%	31%	23%	15%	7%	3%	1%

Intensities in 270° c-plane

0°	5°	10°	15°	20°	25°	30°	35°	40°	45°	50°	55°	60°	65°	70°	75°	80°	85°	90°	95°
5.41	5.39	5.33	5.23	5.09	4.91	4.70	4.46	4.15	3.81	3.43	3.04	2.62	2.15	1.70	1.25	0.80	0.40	0.14	0.05
100%	100%	98%	97%	94%	91%	87%	82%	77%	70%	63%	56%	48%	40%	31%	23%	15%	7%	3%	1%

Beam angle 50%	Field angle 10%	Cutoff angle 2.5%	Intensity ratio in 120° cone	Intensity ratio in 90° cone
118.0°	166.3°	180.3°	75.7%	50.8%