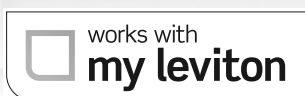
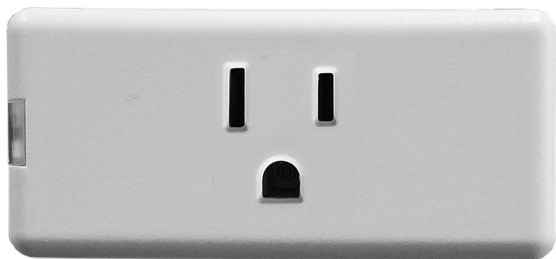


Decora Smart® Mini Plug-In Switch (2nd Gen)



APPLICATION

Decora Smart Wi-Fi® 2nd Generation devices connect to a Wi-Fi network and the My Leviton app to provide wireless lighting control for the whole home. The Leviton Decora Smart Wi-Fi 2nd Generation Mini Plug-In Switch is an affordable solution that makes it easier than ever to control plug-in lamps, holiday lighting, electronics, and small appliances. Add smart lighting control to any room or home. Use your voice with Amazon Alexa™, Google Assistant™, or Apple Siri®. Use the My Leviton app on a smartphone, tablet or computer to control lighting or adjust schedules when away from home or anywhere you have access to the internet. Control a wide array of bulb and fixture types with best-in-class lighting control performance and custom settings.

The 2nd Generation mini plug-in design allows for two mini plug-ins to be plugged into a single receptacle – ideal for controlling multiple devices in areas like living rooms, bedrooms, and kitchens. As well, the integrated button provides manual ON/OFF control at any time.

Installation is simple and requires no wiring – just plug in the device. Ideal for any residential setting where remote ON/OFF switching of appliances, motor loads up to 3/4 HP, or freestanding lights, is needed. Typical applications include switching of lamps, portable fans, kitchen appliances, indoor fountains, holiday lighting, and more.

The Decora Smart Wi-Fi Mini Plug-In Switch can be combined with other Decora Smart Wi-Fi devices to create a Whole Home experience with scheduling, lighting scenes, and app control from anywhere. Go beyond a single device by adding dimmers, switches, fan speed controllers, outlets, and more to control all lights, ceiling fans, electronics and small appliances.

Add the Decora Smart Wi-Fi Voice Dimmer for built-in voice control or the 4-Button Controller to quickly adjust a room full of Wi-Fi enabled dimmers, switches and more with the touch of a button.

WIRELESS MULTI-LOCATION CONTROL

Decora Smart Wi-Fi 2nd Gen Mini Plug-Ins work with Decora Smart Anywhere Companions, which are easily installed with no wiring required. These wire-free devices look like a traditional dimmer and switch, install quickly, and have a 5 year battery life. Pair the Anywhere Switch Companion (DAWSC) wirelessly with a Decora Smart Wi-Fi 2nd Gen Mini Plug-In to add ON/OFF control of connected loads to any indoor wall surface.

WORKS WITH MY LEVITON

The My Leviton app connects Leviton Decora Smart Wi-Fi devices to the cloud to provide app control, device customization, scheduling, and connection to My Leviton partners including voice assistants. Schedule lights and plug loads to adjust at specific times or based on sunrise/sunset, adjust custom settings like bulb type, and create lighting scenes to activate multiple devices at once.

Optionally use the auto-shutoff feature to act as countdown timer in closets, hallways and bathrooms. Utilize the Home or Away modes to enact randomized schedules of selected devices, to provide a lived-in appearance when you are away from home.

NEW! WORKS WITH APPLE HOMEKIT AND SIRI

Decora Smart Wi-Fi 2nd Generation devices can be added to an Apple HomeKit network and controlled with the native Apple Home app on your iOS device, providing compatibility with Siri for voice control.

AMAZON ALEXA VOICE CONTROL

Decora Smart Wi-Fi 2nd Gen devices work with Amazon Alexa. Use your voice to control connected lighting from compatible Alexa built-in devices such as an Amazon Echo, Echo Show, the Alexa app, or even the Decora Smart Voice Dimmer: “Alexa, turn off my living room lights”.

GOOGLE ASSISTANT VOICE CONTROL

Decora Smart Wi-Fi 2nd Gen devices also work with Hey Google, allowing you to control connected lighting with Google Assistant or from the Google Home app! “Hey Google, turn [My Leviton device name] On”.

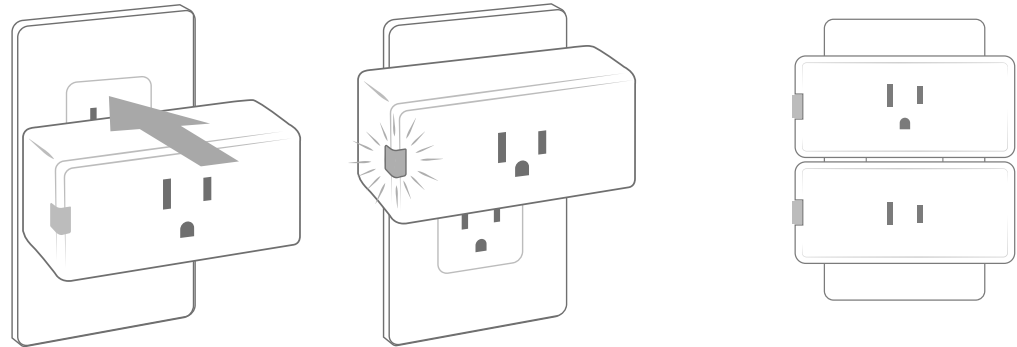
WORKS WITH IFTTT (IF THIS THEN THAT)

Use the free IFTTT service to connect your My Leviton devices with other Internet Of Things (IoT) enabled devices & services to create a smarter home automation experience.

INSTALLATION DIAGRAM

Insert into any 120VAC standard non-controlled receptacle.

(Not for use with GFCI or AFCI protected receptacles; For indoor use only)



WORKS WITH SCHLAGE

Use the My Leviton app to connect to your Schlage Encode™ Smart Wi-Fi Deadbolt and trigger lighting scenes based on lock activity. Make certain you never walk into a dark home when you arrive and make sure select lights are turned off when leaving.

FEATURES AND BENEFITS

- Control your smart plugs from anywhere using the free My Leviton app for iOS and Android, no hub required
- Simplify control of your home – schedule lights and connected plug loads to turn ON/OFF at specific times or based on sunrise/sunset, easily group your smart devices into rooms, and create scenes to activate multiple lights at once
- Works with Hey Google, Amazon Alexa or Apple Siri to use your voice to turn connected devices on or off
- Connects to Wi-Fi; No hub required
- Ease of installation with mini design allows two mini plug-ins to be plugged into the same receptacle
- Integrated Status LED and control button and button for ON/OFF
- Memory maintains ON/OFF status of loads and returns to last state after minor power fluctuations
- Off Means Off – Ensures low-wattage LED bulbs always turn off
- Pair the Anywhere Switch Companion (DAWSC) wirelessly with a Decora Smart Wi-Fi 2nd Gen Mini Plug-In to add ON/OFF control of connected loads to any indoor wall surface
- Pre-set schedules live inside each device, so your schedules always run as expected

- Using My Leviton, control up to 99 devices, 50 rooms, 50 activities, and 50 schedules per residence and up to 20 residences per account

NETWORK

- Wi-Fi – 802.11 a/b/g/n @ 2.4GHz
- Security – WPA, WPA2, or WPA3 security, or open
- Bluetooth – v5.0

RATINGS

- General Use – 15A, 120VAC, 50/60Hz
- Magnetic – 15A
- LED/CFL – 5A
- Incandescent – 1500W
- Motor – 3/4 HP

AGENCY STANDARDS AND COMPLIANCE

- Complies with UL 916, CSA C22.2 No. 205
- UL Listed for USA and Canada
- NOM Certified
- Wi-Fi CERTIFIED™
- Complies with FCC Part 15, Class B

WARRANTY INFORMATION

- Two-Year Limited Warranty

ORDERING INFORMATION

DESCRIPTION	CAT. NO.
Mini Plug-In Switch (2nd Gen), Wi-Fi CERTIFIED	D215P
Anywhere Switch Companion (No wiring required)	DAWSC

Leviton Manufacturing Co., Inc. Global Headquarters

201 N. Service Rd. Melville, NY 11747-3138 Tech Line: 1-800-824-3005 Fax: 1-800-832-9538

Visit our Website at: www.leviton.com/decorasmart

©2021 Leviton Manufacturing Co., Inc. All rights reserved. Subject to change without notice.

SAT-10131
REV JUL 2021