



## 2.5" SQUARE IN-GROUND LIGHT 24V 5W 36° LENS 3000K (WARM WHITE)

### Specifications



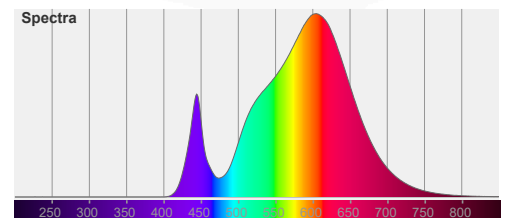
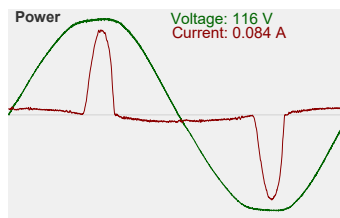
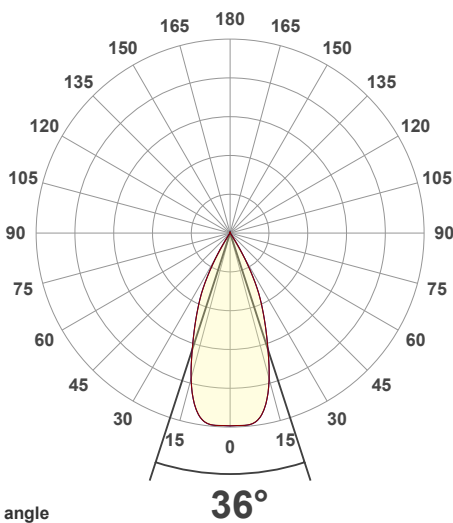
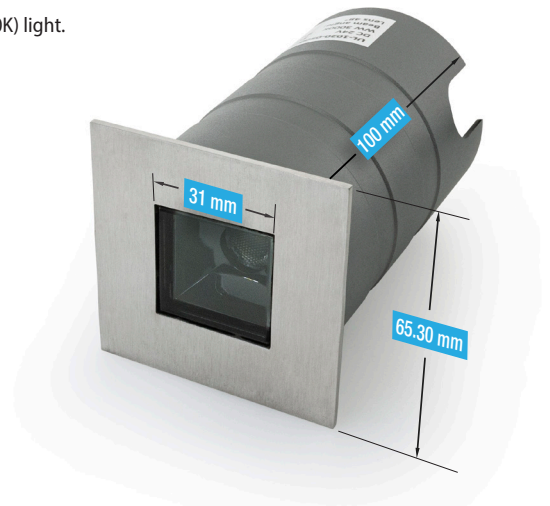
<b>Model No.:</b>	UL-1020-0500-A
<b>Input Voltage:</b>	24V DC
<b>Wattage:</b>	5W
<b>Bulb Type:</b>	Integrated LED
<b>Color Temperature:</b>	3000K (Warm White)
<b>Housing Material:</b>	Die-cast Aluminum body
<b>Cap Material:</b>	316 Stainless Steel
<b>Beam Angle:</b>	36° Lens
<b>Optics:</b>	Primary optics (Fresnel lens)
<b>IP Rating:</b>	IP67 (Outdoor rated)
<b>Dimmable:</b>	Yes
<b>Cable Size:</b>	<b>Length:</b> 100cm (39.3in) <b>Diameter:</b> 7.5mm (0.3in) 18AWG
<b>Dimensions with housing:</b>	<b>Base Diameter:</b> 61mm (2.4in) <b>Side:</b> 65mm (2.5in) <b>Height:</b> 100mm (3.95in)
<b>Dimensions without housing:</b>	<b>Side:</b> 65mm (2.5in) <b>Height:</b> 61mm (2.4in)
<b>Certification:</b>	CE



**SKU#: 666561424169**

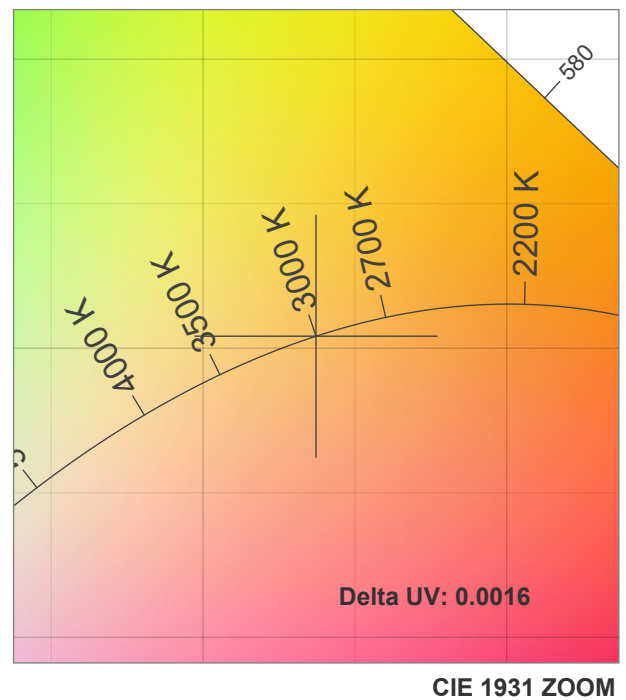
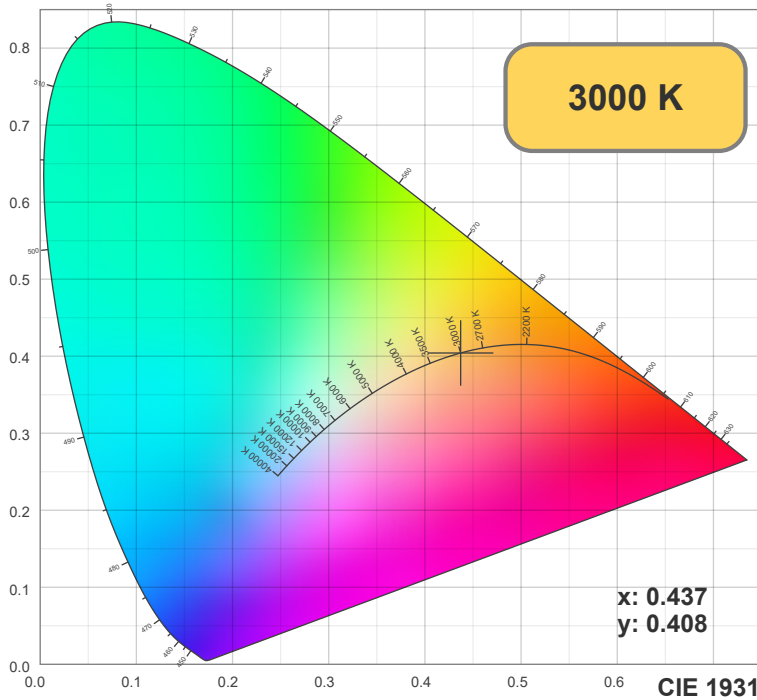
### Features

- High-quality 2.5 inches square recessed inground light fixture designed for outdoor applications.
- Operates on a 24V DC power supply with a powerful integrated COB LED bulb that produces a warm white (3000K) light.
- Total power consumption of 5W, making it energy-efficient and cost-effective.
- Sturdy die-cast aluminum body with a cap material of 316 stainless steel, ensuring durability and longevity.
- Secondary optics reflector with narrow 36° beam angle for concentrated illumination.
- Rated IP67, suitable for use in all weather conditions and is resilient to being stepped upon.
- Dimmable, allowing you to adjust the brightness to your desired level.

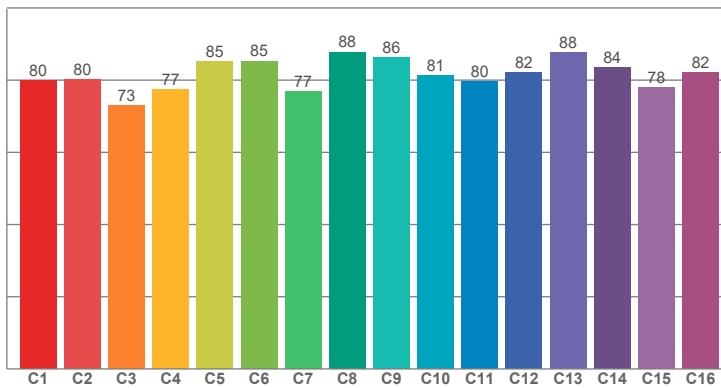


### Disclaimer

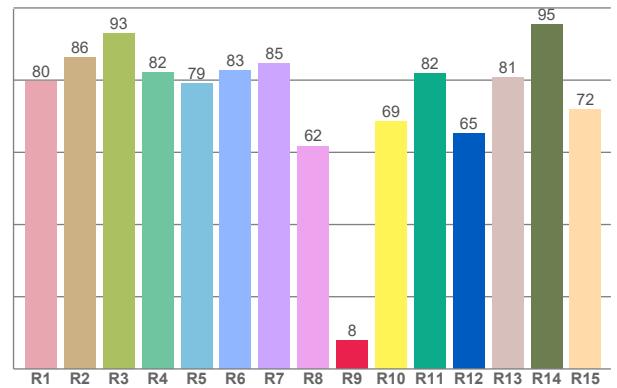
The data and information contained in this specification sheet are subject to change without notice; the ratings supplied are provided based on the product manufacturer. The information contained in this specification sheet should not be considered a warranty, expressed or implied, including, but not limited to, a warranty of merchantability or fitness for a particular purpose. In no event shall LED Lights and Parts be liable for any incidental or consequential damages resulting from the use, misuse, or inability to use the product. This exclusion applies regardless of whether such damages are sought based on breach of warranty, breach of contract, negligence, strict liability in tort, or any other legal theory.



**TM30: 81.5**



**CRI: 81.1 (R1-R8)**



CRI R values, only R1-R8 are used to calculate final CRI value

R1	R2	R3	R4	R5	R6	R7	R8	R9	R10	R11	R12	R13	R14	R15
79.72	86.35	92.82	82.05	79.02	82.62	84.71	61.75	7.88	68.62	81.75	65.20	80.72	95.50	71.86

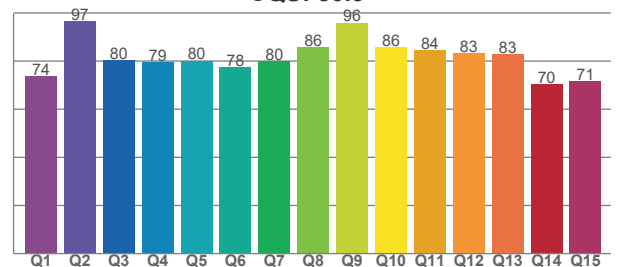
TM30 C values, 16 binned values out of total of 99 C values

C1	C2	C3	C4	C5	C6	C7	C8	C9	C10	C11	C12	C13	C14	C15	C16
79.79	80.11	72.87	77.35	85.18	85.30	76.92	87.81	86.16	81.21	79.54	82.19	87.72	83.53	78.07	82.05

CQS Q values

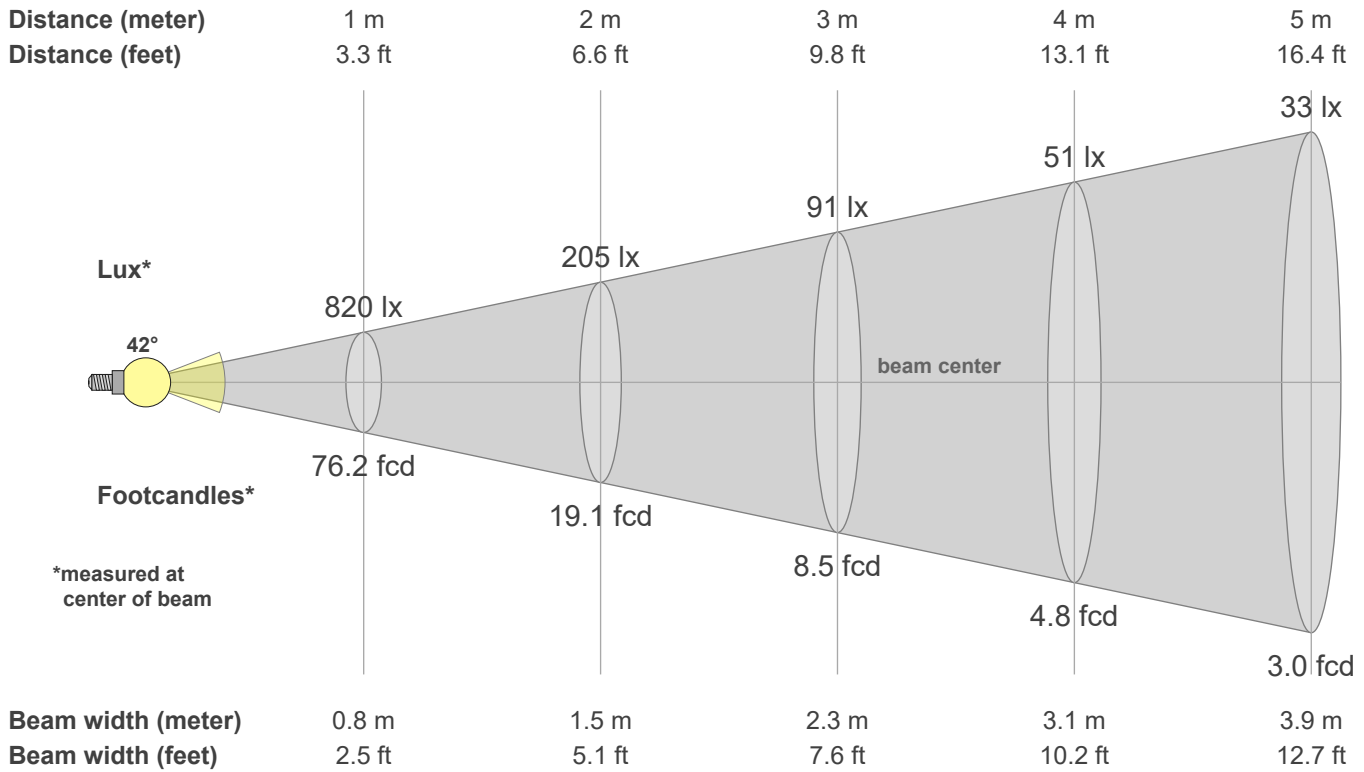
Q1	Q2	Q3	Q4	Q5	Q6	Q7	Q8	Q9	Q10	Q11	Q12	Q13	Q14	Q15
73.87	96.67	80.43	79.40	80.15	77.59	79.84	85.68	95.98	85.63	84.42	83.24	82.85	70.30	71.49

**CQS: 80.3**



## Color parameters

CCT	CRI	CRI R9	TM30 Rf	TM30 Rg	CQS	x	y	u	v	Duv
3000 K	81.1	7.9	81.5	99.3	80.3	0.4	0.4	0.3	0.3	0.0016



### Intensities in 0° c-plane

0°	2°	4°	6°	8°	10°	12°	14°	16°	18°	20°	22°	24°	26°	28°	30°	32°	34°	36°	38°
820	820	821	818	808	781	737	677	602	522	449	384	324	263	192	122	60	21	9	4
100%	100%	100%	100%	99%	95%	90%	83%	73%	64%	55%	47%	40%	32%	23%	15%	7%	3%	1%	1%

### Intensities in 90° c-plane

0°	2°	4°	6°	8°	10°	12°	14°	16°	18°	20°	22°	24°	26°	28°	30°	32°	34°	36°	38°
820	820	821	818	808	781	737	677	602	522	449	384	324	263	192	122	60	21	9	4
100%	100%	100%	100%	99%	95%	90%	83%	73%	64%	55%	47%	40%	32%	23%	15%	7%	3%	1%	1%

### Intensities in 180° c-plane

0°	2°	4°	6°	8°	10°	12°	14°	16°	18°	20°	22°	24°	26°	28°	30°	32°	34°	36°	38°
820	820	821	818	808	781	737	677	602	522	449	384	324	263	192	122	60	21	9	4
100%	100%	100%	100%	99%	95%	90%	83%	73%	64%	55%	47%	40%	32%	23%	15%	7%	3%	1%	1%

### Intensities in 270° c-plane

0°	2°	4°	6°	8°	10°	12°	14°	16°	18°	20°	22°	24°	26°	28°	30°	32°	34°	36°	38°
820	820	821	818	808	781	737	677	602	522	449	384	324	263	192	122	60	21	9	4
100%	100%	100%	100%	99%	95%	90%	83%	73%	64%	55%	47%	40%	32%	23%	15%	7%	3%	1%	1%

Beam angle 50%	Field angle 10%	Cutoff angle 2.5%	Intensity ratio in 120° cone	Intensity ratio in 90° cone
42.4°	62.5°	68.2°	99.9%	99.6%