



2.5" SQUARE IN-GROUND LIGHT, 24V 5W 12° REFLECTOR 3000K (WARM WHITE)

Specifications



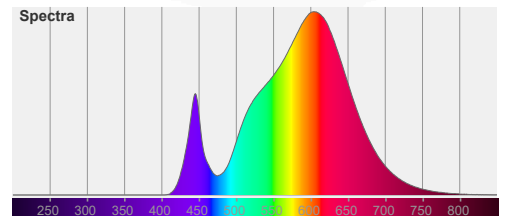
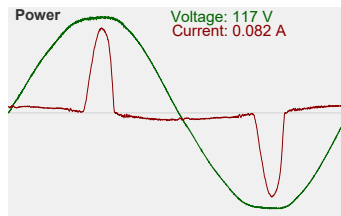
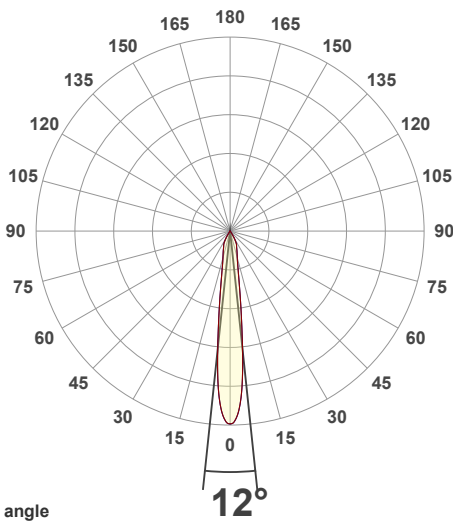
Model No.:	UL-1020-0500-A
Input Voltage:	24V DC
Wattage:	5W
Bulb Type:	Integrated LED
Color Temperature:	3000K (Warm White)
Housing Material:	Die-cast Aluminum body
Cap Material:	316 Stainless Steel
Beam Angle:	12° Reflector
Optics:	Secondary optics (Reflector)
IP Rating:	IP67 (Outdoor rated)
Dimmable:	Yes
Cable Size:	Length: 100cm (39.3in) Diameter: 7.5mm (0.3in) 18AWG
Dimensions with housing:	Base Diameter: 61mm (2.4in) Side: 65mm (2.5in) Height: 100mm (3.95in)
Dimensions without housing:	Side: 65mm (2.5in) Height: 61mm (2.4in)
Certification:	CE



SKU#: 666561424145

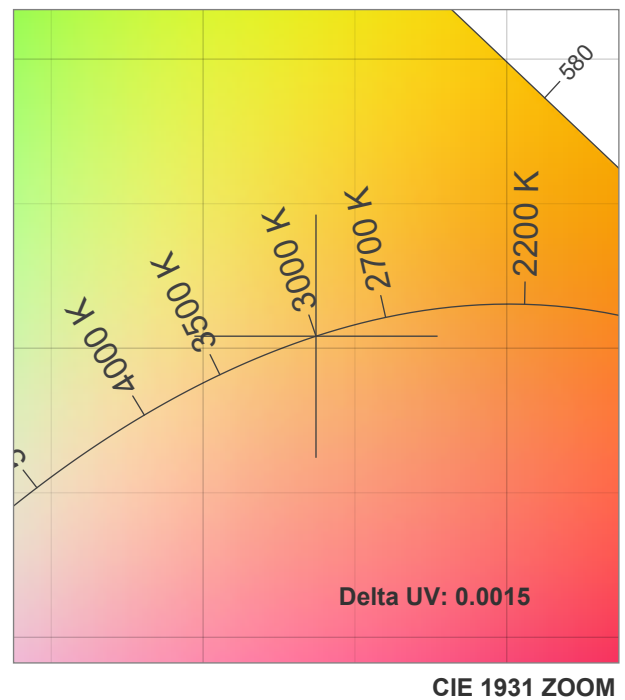
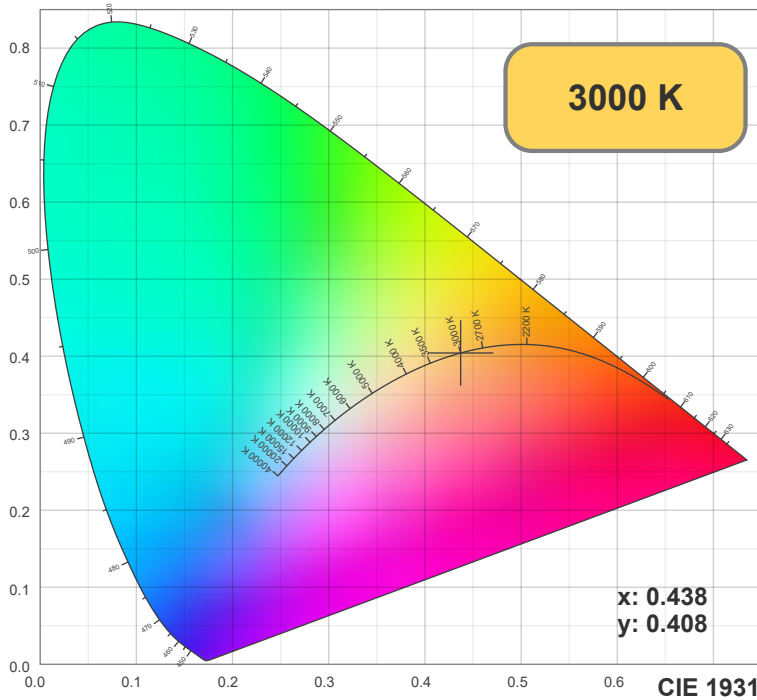
Features

- High-quality 2.5 inches square recessed in-ground light fixture designed for outdoor applications.
- Operates on a 24V DC power supply with a powerful integrated COB LED bulb that produces a warm white (3000K) light.
- Total power consumption of 5W, making it energy-efficient and cost-effective.
- Sturdy die-cast aluminum body with a cap material of 316 stainless steel, ensuring durability and longevity.
- Secondary optics reflector with narrow beam angle of 12° for concentrated illumination for spotlights.
- Rated IP67, suitable for use in all weather conditions and is resilient to being stepped upon.
- Dimmable, allowing you to adjust the brightness to your desired level.



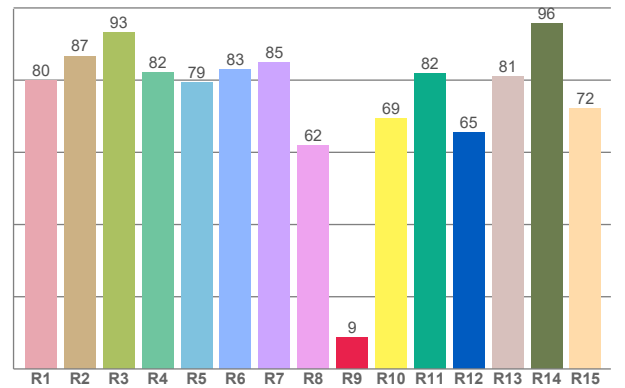
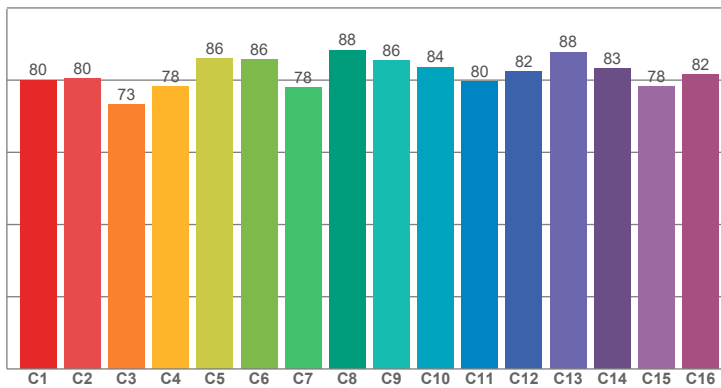
Disclaimer

The data and information contained in this specification sheet are subject to change without notice; the ratings supplied are provided based on the product manufacturer. The information contained in this specification sheet should not be considered a warranty, expressed or implied, including, but not limited to, a warranty of merchantability or fitness for a particular purpose. In no event shall LED Lights and Parts be liable for any incidental or consequential damages resulting from the use, misuse, or inability to use the product. This exclusion applies regardless of whether such damages are sought based on breach of warranty, breach of contract, negligence, strict liability in tort, or any other legal theory.



TM30: 81.9

CRI: 81.4 (R1-R8)



CRI R values, only R1-R8 are used to calculate final CRI value

R1	R2	R3	R4	R5	R6	R7	R8	R9	R10	R11	R12	R13	R14	R15
80.00	86.70	93.14	82.19	79.28	83.05	84.83	61.90	8.64	69.33	81.83	65.43	81.06	95.67	72.20

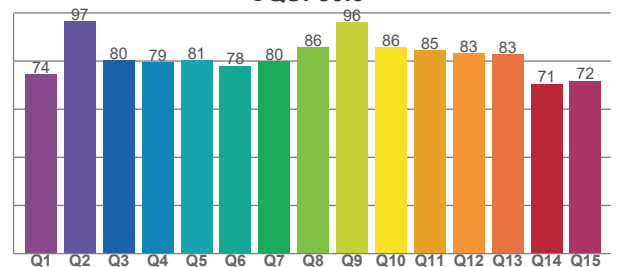
TM30 C values, 16 binned values out of total of 99 C values

C1	C2	C3	C4	C5	C6	C7	C8	C9	C10	C11	C12	C13	C14	C15	C16
80.04	80.37	73.31	78.32	86.07	85.83	77.95	88.34	85.54	83.64	79.55	82.46	87.80	83.24	78.27	81.62

CQS Q values

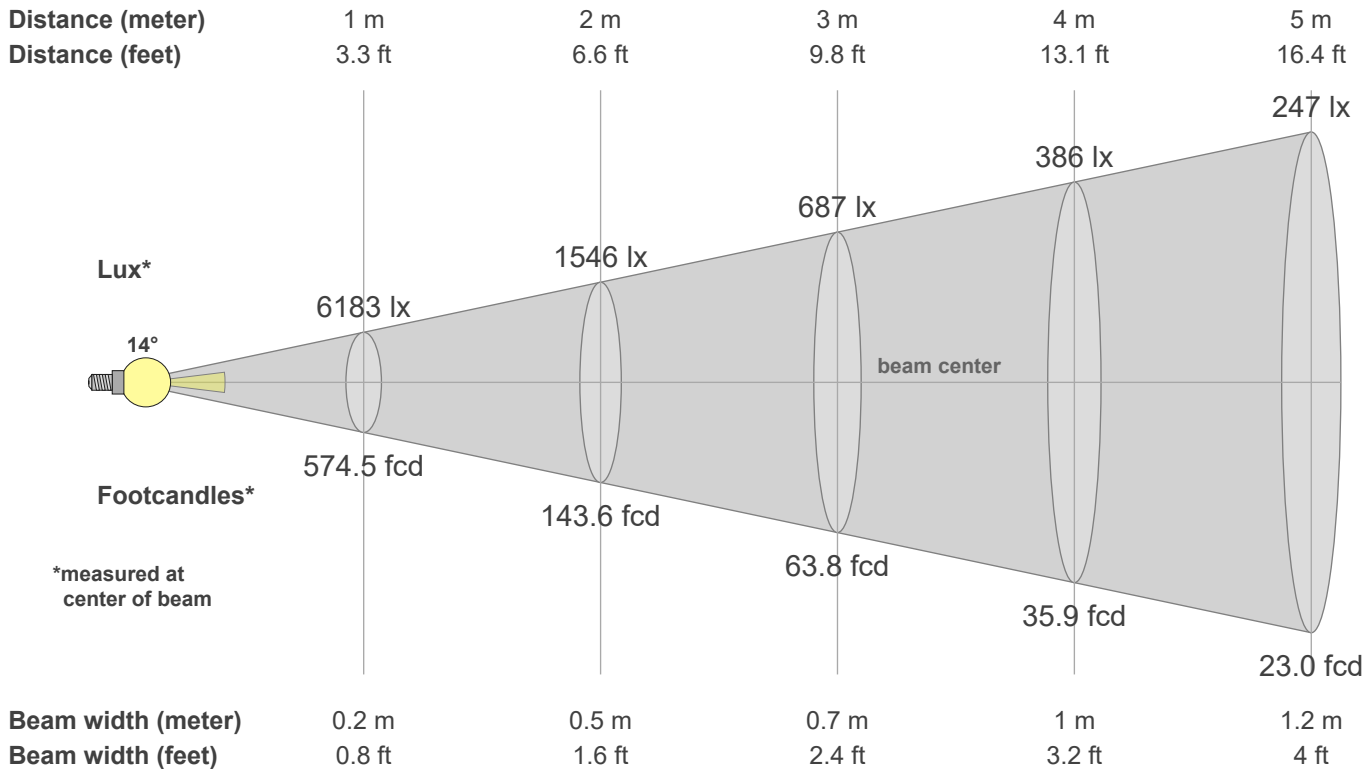
Q1	Q2	Q3	Q4	Q5	Q6	Q7	Q8	Q9	Q10	Q11	Q12	Q13	Q14	Q15
74.39	96.63	80.35	79.45	80.50	78.10	80.05	85.67	96.02	85.87	84.59	83.40	82.99	70.60	71.85

CQS: 80.5



Color parameters

CCT	CRI	CRI R9	TM30 Rf	TM30 Rg	CQS	x	y	u	v	Duv
3000 K	81.4	8.6	81.9	99.2	80.5	0.4	0.4	0.3	0.3	0.0015



Intensities in 0° c-plane

0°	2°	4°	6°	8°	10°	12°	14°	16°	18°	20°	22°	24°	26°	28°	30°	32°	34°	36°	38°
6183	5974	5221	3806	2488	1665	1215	966	824	718	630	558	507	458	369	269	157	73	42	23
100%	97%	84%	62%	40%	27%	20%	16%	13%	12%	10%	9%	8%	7%	6%	4%	3%	1%	1%	0%

Intensities in 90° c-plane

0°	2°	4°	6°	8°	10°	12°	14°	16°	18°	20°	22°	24°	26°	28°	30°	32°	34°	36°	38°
6183	5974	5221	3806	2488	1665	1215	966	824	718	630	558	507	458	369	269	157	73	42	23
100%	97%	84%	62%	40%	27%	20%	16%	13%	12%	10%	9%	8%	7%	6%	4%	3%	1%	1%	0%

Intensities in 180° c-plane

0°	2°	4°	6°	8°	10°	12°	14°	16°	18°	20°	22°	24°	26°	28°	30°	32°	34°	36°	38°
6183	5974	5221	3806	2488	1665	1215	966	824	718	630	558	507	458	369	269	157	73	42	23
100%	97%	84%	62%	40%	27%	20%	16%	13%	12%	10%	9%	8%	7%	6%	4%	3%	1%	1%	0%

Intensities in 270° c-plane

0°	2°	4°	6°	8°	10°	12°	14°	16°	18°	20°	22°	24°	26°	28°	30°	32°	34°	36°	38°
6183	5974	5221	3806	2488	1665	1215	966	824	718	630	558	507	458	369	269	157	73	42	23
100%	97%	84%	62%	40%	27%	20%	16%	13%	12%	10%	9%	8%	7%	6%	4%	3%	1%	1%	0%

Beam angle 50%	Field angle 10%	Cutoff angle 2.5%	Intensity ratio in 120° cone	Intensity ratio in 90° cone
14.0°	40.6°	64.1°	100.0%	99.9%