

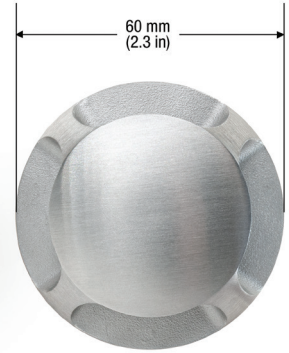


## 2.5" DIA RECESSED LED IN-GROUND 4 WAY LIGHT, 12-24V 3W 3000K OR RGBW

### Specifications



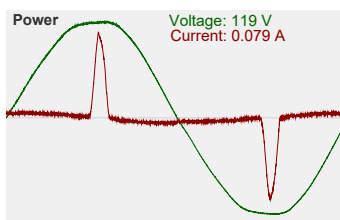
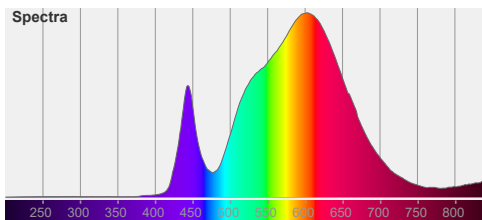
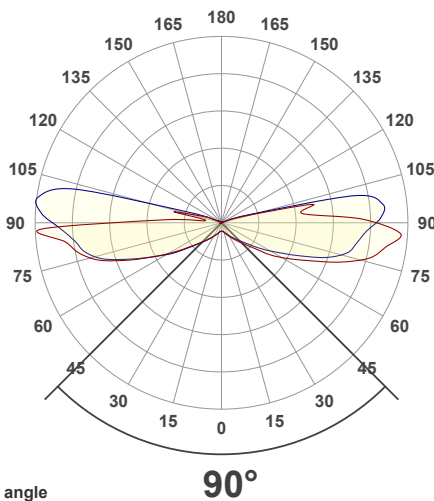
<b>Model No.:</b>	UL-1022-0300-A
<b>Input Voltage:</b>	12-24V DC
<b>Wattage:</b>	3W
<b>Trim:</b>	Four-Way Trim
<b>Bulb Type:</b>	Integrated COB LED
<b>Color Temperature:</b>	3000K (Warm White) or RGBW
<b>Brightness:</b>	240-300Lm
<b>Housing Material:</b>	Die-cast Aluminum body
<b>Beam Angle:</b>	45°
<b>Cap Material:</b>	Stainless Steel
<b>IP Rating:</b>	IP67 (Outdoor rated)
<b>Dimmable:</b>	Yes
<b>Cable Size:</b>	<b>Length:</b> 100cm (39.3in) <b>Diameter:</b> 7.7mm (0.3in) 18AWG
<b>Dimensions with housing:</b>	<b>Diameter:</b> 60mm (2.3in) <b>Height:</b> 100mm (3.95in)
<b>Certification:</b>	CE



**SKU#: 666561424121**

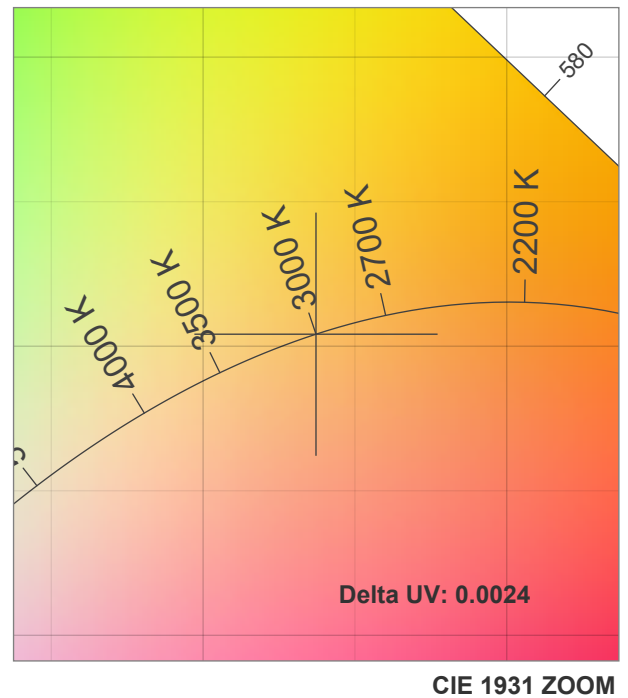
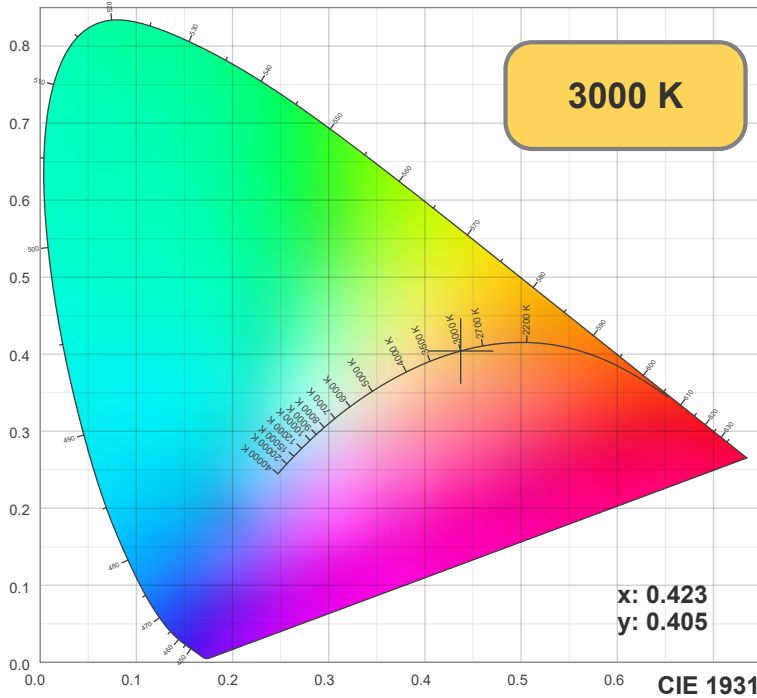
### Features

- Recessed LED in-ground driveway light with a diameter of 2.5 inches.
- Total power consumption of 1W and operates on 12-24V DC.
- Available in color temperature of 3000K (Warm White) or RGBW, with a brightness of 240-300Lm.
- Integrated COB LED bulb type and housing made of die-cast aluminum body with a cap color finish of 315 Stainless Steel.
- Shoots light from 4 ways using the four-way cover inserted on top of the engine, with a beam angle of 45°.
- Dimmable and comes with 2 feet of wire and housing, with optional installation using housing.
- Popularly installed as LED pathways, pool deck lights, patio lights or low-level wall lightings.
- Can be used with different caps such as 1-way trim, 2-way trim, 4-way trim, and round flat trim based on the desired application.



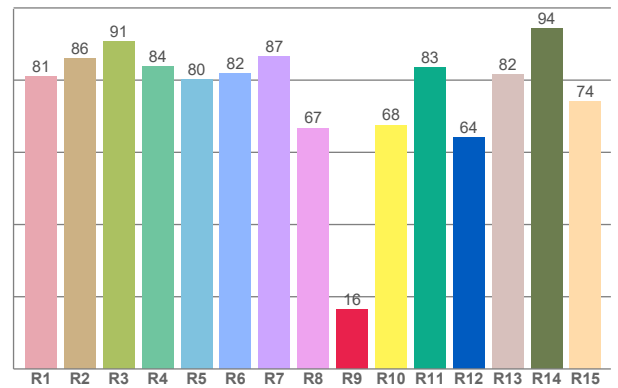
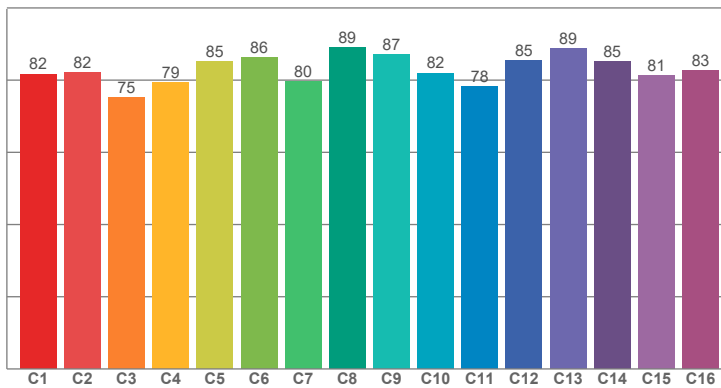
### Disclaimer

The data and information contained in this specification sheet are subject to change without notice; the ratings supplied are provided based on the product manufacturer. The information contained in this specification sheet should not be considered a warranty, expressed or implied, including, but not limited to, a warranty of merchantability or fitness for a particular purpose. In no event shall LED Lights and Parts be liable for any incidental or consequential damages resulting from the use, misuse, or inability to use the product. This exclusion applies regardless of whether such damages are sought based on breach of warranty, breach of contract, negligence, strict liability in tort, or any other legal theory.



TM30: 82.8

CRI: 82.1 (R1-R8)



CRI R values, only R1-R8 are used to calculate final CRI value

R1	R2	R3	R4	R5	R6	R7	R8	R9	R10	R11	R12	R13	R14	R15
81.08	86.02	90.82	83.71	80.28	81.72	86.61	66.76	16.35	67.57	83.49	64.09	81.62	94.40	74.06

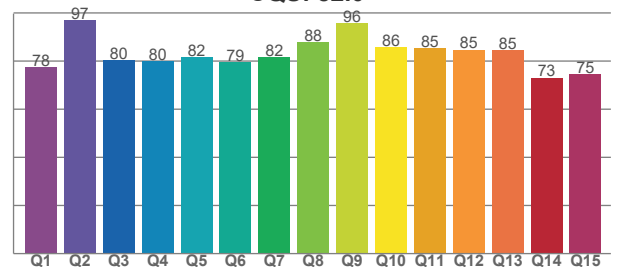
TM30 C values, 16 binned values out of total of 99 C values

C1	C2	C3	C4	C5	C6	C7	C8	C9	C10	C11	C12	C13	C14	C15	C16
81.72	82.16	75.10	79.41	85.22	86.28	79.62	88.99	87.17	81.99	78.26	85.40	88.65	85.24	81.40	82.60

CQS Q values

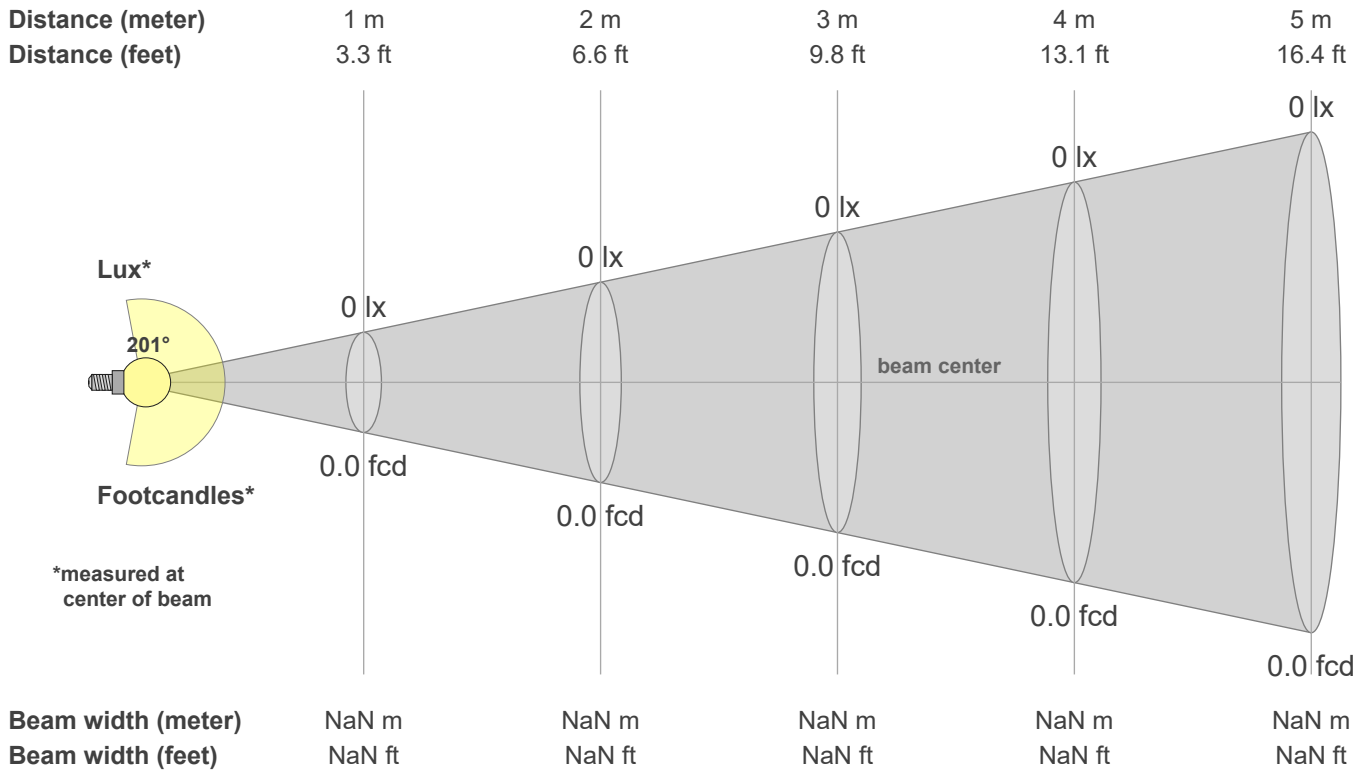
Q1	Q2	Q3	Q4	Q5	Q6	Q7	Q8	Q9	Q10	Q11	Q12	Q13	Q14	Q15
77.52	96.97	80.33	79.99	81.54	79.38	81.65	87.75	95.79	85.93	85.27	84.72	84.65	73.09	74.68

CQS: 82.0



## Color parameters

CCT	CRI	CRI R9	TM30 Rf	TM30 Rg	CQS	x	y	u	v	Duv
3000 K	82.1	16.3	82.8	99.8	82.0	0.4	0.4	0.3	0.3	0.0024



### Intensities in 0° c-plane

0°	9°	18°	27°	36°	45°	54°	63°	72°	81°	90°	99°	108°	117°	126°	135°	144°	153°	162°	171°
0.12	0.13	0.16	0.21	0.29	0.42	0.71	1.17	1.84	2.39	2.21	1.26	0.22	0.00	0.00	0.00	0.00	0.00	0.00	0.00
100%	108%	129%	169%	234%	340%	577%	954%	1499%	1942%	1798%	1024%	183%	3%	2%	3%	2%	3%	2%	3%

### Intensities in 90° c-plane

0°	9°	18°	27°	36°	45°	54°	63°	72°	81°	90°	99°	108°	117°	126°	135°	144°	153°	162°	171°
0.12	0.13	0.15	0.19	0.26	0.37	0.59	0.98	1.62	1.98	2.25	2.17	0.29	0.00	0.00	0.00	0.00	0.00	0.00	0.00
100%	102%	119%	153%	210%	298%	479%	795%	1318%	1607%	1825%	1762%	235%	3%	4%	3%	3%	3%	3%	3%

### Intensities in 180° c-plane

0°	9°	18°	27°	36°	45°	54°	63°	72°	81°	90°	99°	108°	117°	126°	135°	144°	153°	162°	171°
0.12	0.13	0.16	0.20	0.28	0.40	0.62	1.07	1.78	2.22	1.90	0.33	0.32	0.08	0.01	0.00	0.00	0.00	0.00	0.00
100%	105%	128%	164%	225%	322%	507%	873%	1444%	1803%	1544%	270%	264%	62%	8%	3%	2%	2%	2%	3%

### Intensities in 270° c-plane

0°	9°	18°	27°	36°	45°	54°	63°	72°	81°	90°	99°	108°	117°	126°	135°	144°	153°	162°	171°
0.12	0.13	0.16	0.21	0.29	0.41	0.65	1.07	1.72	2.10	2.46	2.58	0.48	0.06	0.02	0.00	0.00	0.00	0.00	0.00
100%	106%	130%	169%	232%	329%	530%	874%	1397%	1710%	1997%	2101%	394%	52%	14%	2%	2%	4%	2%	3%

<b>Beam angle 50%</b>	<b>Field angle 10%</b>	<b>Cutoff angle 2.5%</b>	<b>Intensity ratio in 120° cone</b>	<b>Intensity ratio in 90° cone</b>
<b>201.1°</b>	<b>218.1°</b>	<b>227.4°</b>	<b>12.5%</b>	<b>4.5%</b>