

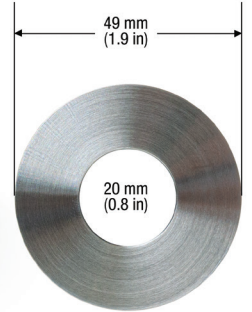
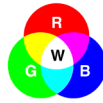


2" FLAT ROUND DIA RECESSED LED IN-GROUND UP-LIGHT, 12-24V 3W 3000K OR RGBW

Specifications



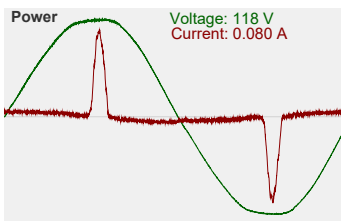
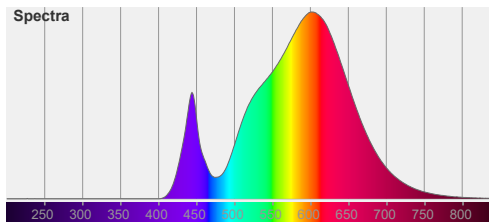
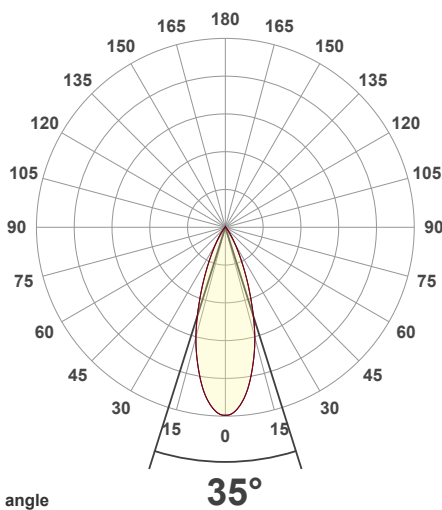
Model No.:	UL-1022-0300-A
Input Voltage:	12-24V DC
Wattage:	3W
Trim:	Flat Trim
Bulb Type:	Integrated COB LED
Color Temperature:	3000K (Warm White) or RGBW
Brightness:	240-300Lm
Housing Material:	Die-cast Aluminum body
Beam Angle:	28° or 45° (mention in the notes before buying)
Cap Material:	Stainless Steel
IP Rating:	IP67 (Outdoor rated)
Dimmable:	Yes
Cable Size:	Length: 100cm (39.3in) Diameter: 7.7mm (0.3in) 18AWG
Dimensions with housing:	Diameter: 49mm (1.9in) Height: 100mm (3.95in)
Certification:	CE



SKU#: 666561424091

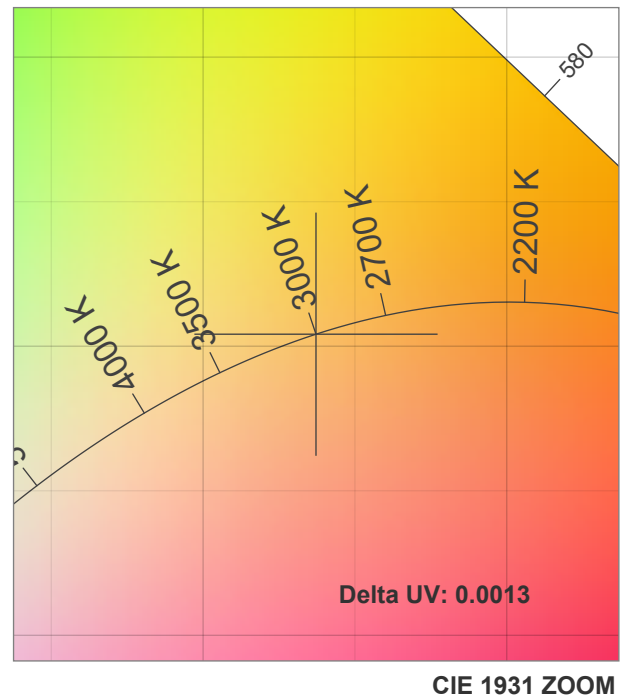
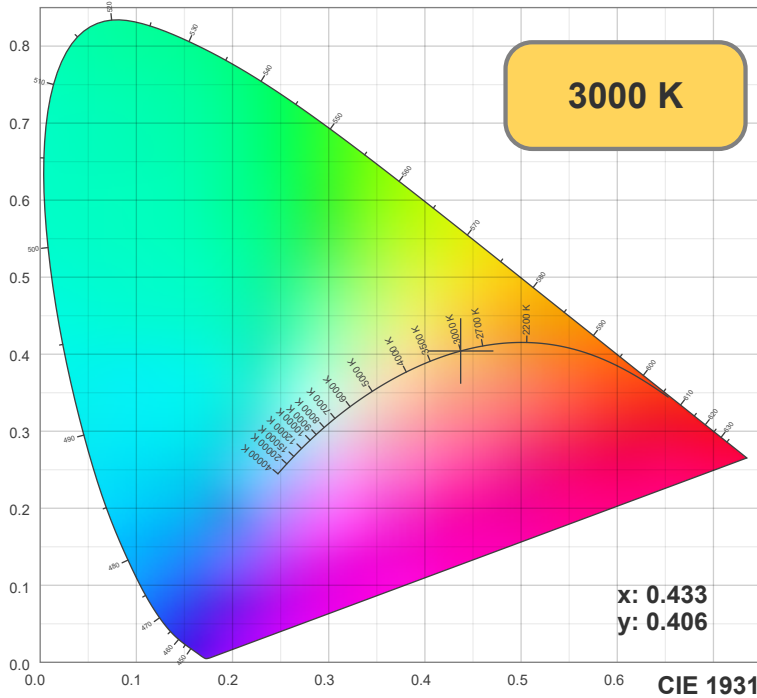
Features

- Versatile and functional lighting fixture for various outdoor applications.
- Operates on a 12-24V DC power supply with a total power consumption of 1W.
- Available in Warm White (3000K) or RGBW color temperature options.
- Produces a brightness of 240-300Lm using an integrated LED bulb.
- Sturdy die-cast aluminum body with a cap color finish of 315 stainless steel for durability and longevity.
- Beam angle of 28° or 45°, depending on your desired option.
- IP67 rating, suitable for use in all weather conditions and being stepped upon.
- Dimmable, allowing you to adjust the brightness to your desired level.
- Dimensions of 49mm in diameter and 100mm in height, with a 100cm cable included.
- Can be used for LED pathways, pool deck lights, patio lights, and low-level wall lighting.
- Can be used with different caps such as 1-way trim, 2-way trim, 4-way trim, and round flat trim.

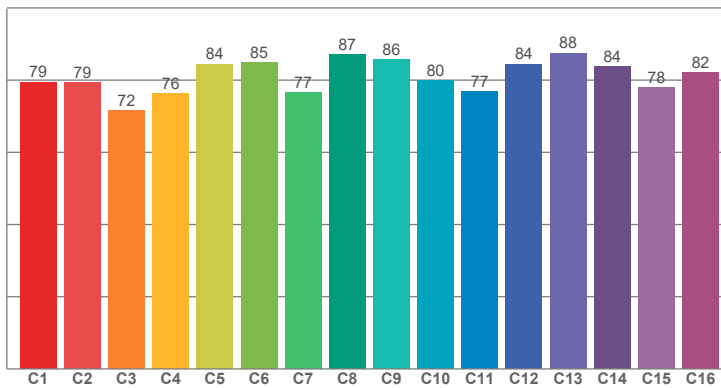


Disclaimer

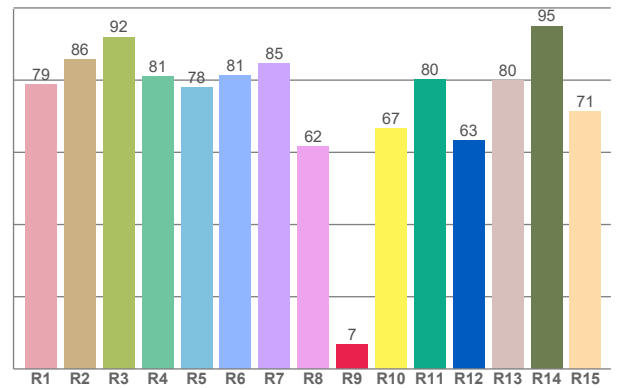
The data and information contained in this specification sheet are subject to change without notice; the ratings supplied are provided based on the product manufacturer. The information contained in this specification sheet should not be considered a warranty, expressed or implied, including, but not limited to, a warranty of merchantability or fitness for a particular purpose. In no event shall LED Lights and Parts be liable for any incidental or consequential damages resulting from the use, misuse, or inability to use the product. This exclusion applies regardless of whether such damages are sought based on breach of warranty, breach of contract, negligence, strict liability in tort, or any other legal theory.



TM30: 80.8



CRI: 80.4 (R1-R8)



CRI R values, only R1-R8 are used to calculate final CRI value

R1	R2	R3	R4	R5	R6	R7	R8	R9	R10	R11	R12	R13	R14	R15
78.87	85.61	91.94	81.03	78.04	81.20	84.56	61.60	6.74	66.66	80.10	63.23	79.83	94.99	71.41

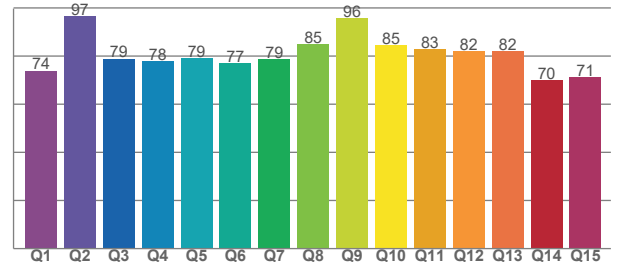
TM30 C values, 16 binned values out of total of 99 C values

C1	C2	C3	C4	C5	C6	C7	C8	C9	C10	C11	C12	C13	C14	C15	C16
79.47	79.36	71.52	76.21	84.48	84.79	76.58	87.19	85.63	79.98	76.76	84.48	87.50	83.69	77.95	82.11

CQS Q values

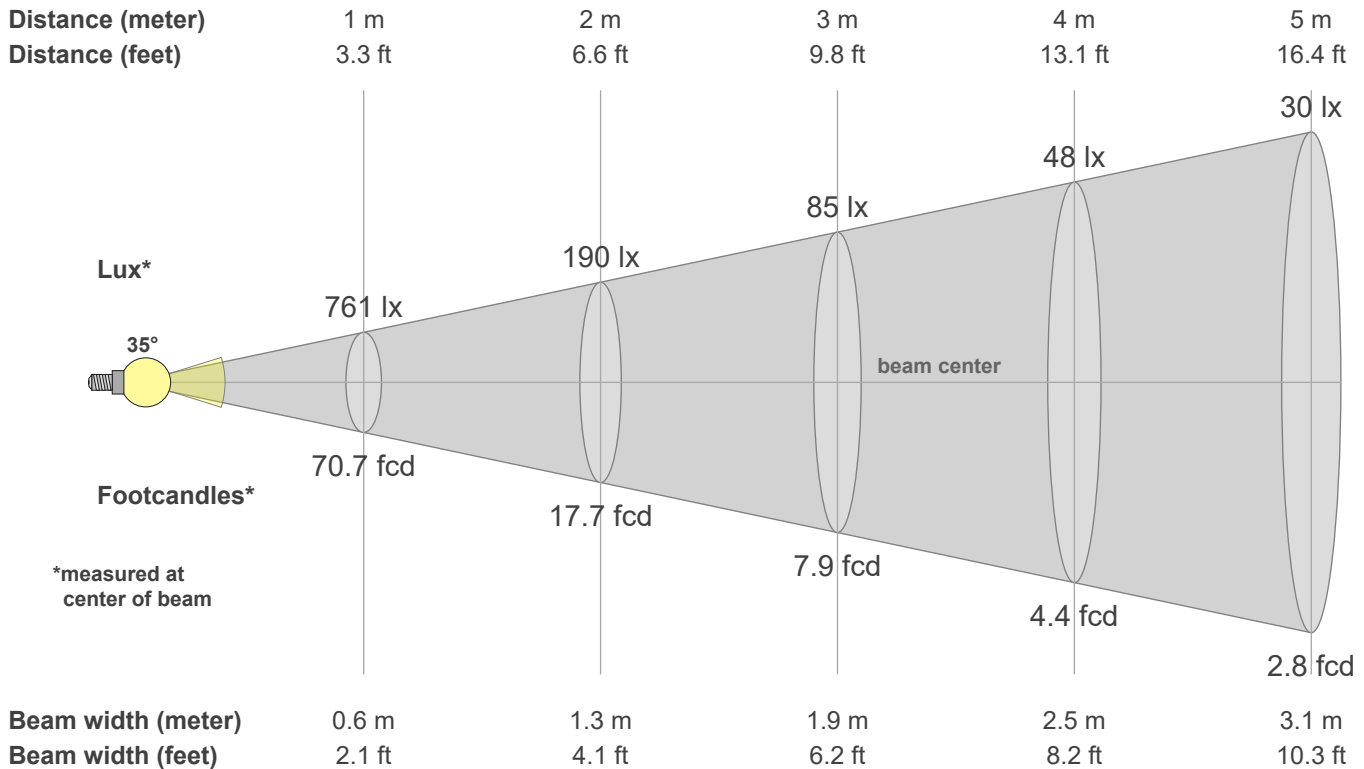
Q1	Q2	Q3	Q4	Q5	Q6	Q7	Q8	Q9	Q10	Q11	Q12	Q13	Q14	Q15
73.94	96.66	78.91	77.71	79.22	76.88	78.78	85.04	95.69	84.58	83.05	82.08	82.01	69.91	71.25

CQS: 79.6



Color parameters

CCT	CRI	CRI R9	TM30 Rf	TM30 Rg	CQS	x	y	u	v	Duv
3000 K	80.4	6.7	80.8	99.3	79.6	0.4	0.4	0.3	0.3	0.0013



Intensities in 0° c-plane

0°	2°	4°	6°	8°	10°	12°	14°	16°	18°	20°	22°	24°	26°	28°	30°	32°	34°	36°	38°
761	755	735	702	658	606	550	492	429	361	297	238	187	143	107	80	59	42	31	22
100%	99%	97%	92%	86%	80%	72%	65%	56%	47%	39%	31%	25%	19%	14%	11%	8%	6%	4%	3%

Intensities in 90° c-plane

0°	2°	4°	6°	8°	10°	12°	14°	16°	18°	20°	22°	24°	26°	28°	30°	32°	34°	36°	38°
761	755	735	702	658	606	550	492	429	361	297	238	187	143	107	80	59	42	31	22
100%	99%	97%	92%	86%	80%	72%	65%	56%	47%	39%	31%	25%	19%	14%	11%	8%	6%	4%	3%

Intensities in 180° c-plane

0°	2°	4°	6°	8°	10°	12°	14°	16°	18°	20°	22°	24°	26°	28°	30°	32°	34°	36°	38°
761	755	735	702	658	606	550	492	429	361	297	238	187	143	107	80	59	42	31	22
100%	99%	97%	92%	86%	80%	72%	65%	56%	47%	39%	31%	25%	19%	14%	11%	8%	6%	4%	3%

Intensities in 270° c-plane

0°	2°	4°	6°	8°	10°	12°	14°	16°	18°	20°	22°	24°	26°	28°	30°	32°	34°	36°	38°
761	755	735	702	658	606	550	492	429	361	297	238	187	143	107	80	59	42	31	22
100%	99%	97%	92%	86%	80%	72%	65%	56%	47%	39%	31%	25%	19%	14%	11%	8%	6%	4%	3%

Beam angle 50%	Field angle 10%	Cutoff angle 2.5%	Intensity ratio in 120° cone	Intensity ratio in 90° cone
34.8°	60.7°	77.5°	99.6%	98.1%