



# 4.5" ROUND RECESSED 1 WAY IN-GROUND LIGHT 24V 4W 3000K (WARM WHITE)

## Specifications



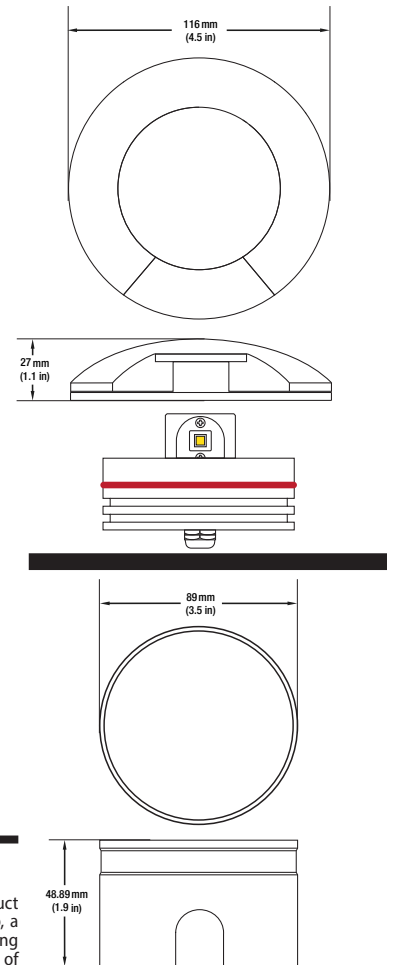
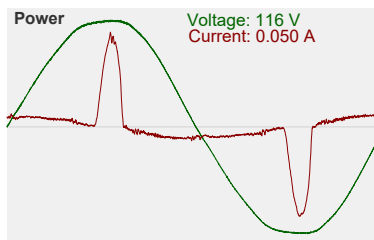
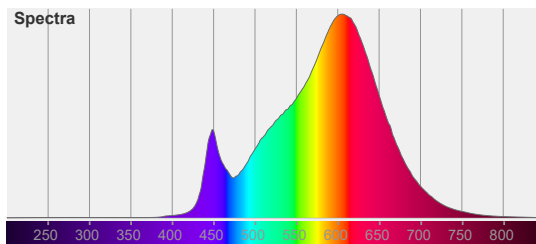
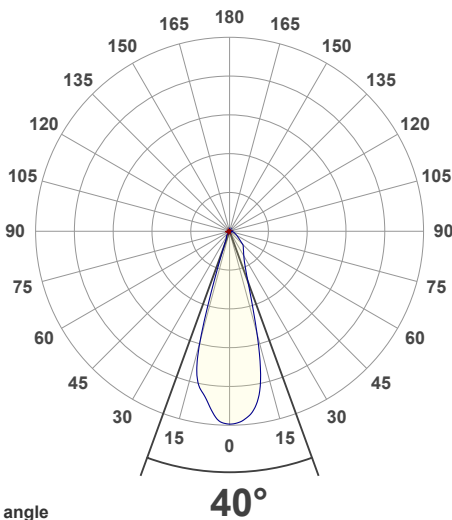
<b>Model No.:</b>	UL-D001-0200-B
<b>Input Voltage:</b>	24V DC
<b>Wattage:</b>	2W
<b>Bulb Type:</b>	Integrated LED
<b>Color Temperature:</b>	3000K (Warm White)
<b>Housing Material:</b>	Die-cast Aluminum body
<b>Cap Material:</b>	316 Stainless Steel
<b>Beam Angle:</b>	45°
<b>Cap/Trim Type:</b>	1-way Direction cover
<b>IP Rating:</b>	IP65 (Outdoor rated)
<b>Dimmable:</b>	Yes
<b>Cable Size:</b>	<b>Length:</b> 100cm (39.3in) <b>Diameter:</b> 7.5mm (0.3in) 18AWG
<b>Dimensions with housing:</b>	<b>Diameter:</b> 116mm (4.5in) <b>Height:</b> 48.9mm (1.92in) <b>Base Diameter:</b> 88.95mm (3.5in)
<b>Dimensions without housing:</b>	<b>Diameter:</b> 116mm (4.5in) <b>Height:</b> 48.89mm (1.84in)
<b>Certification:</b>	CE



**SKU#: 666561424053**

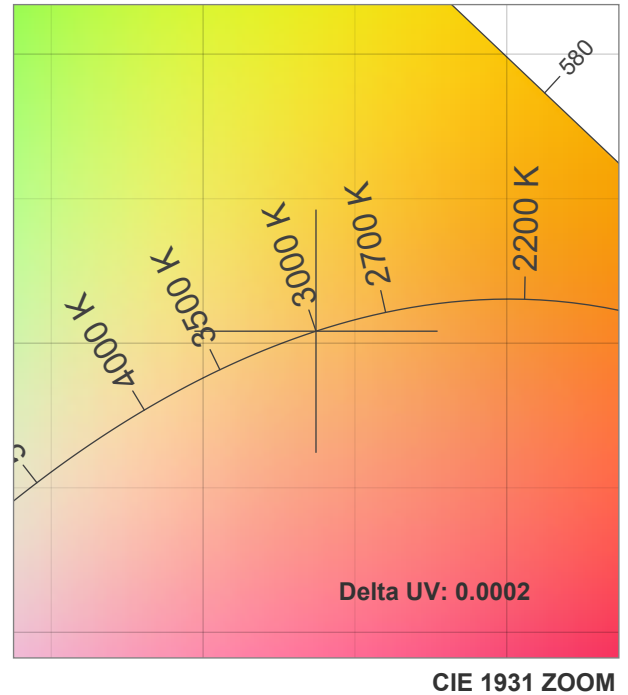
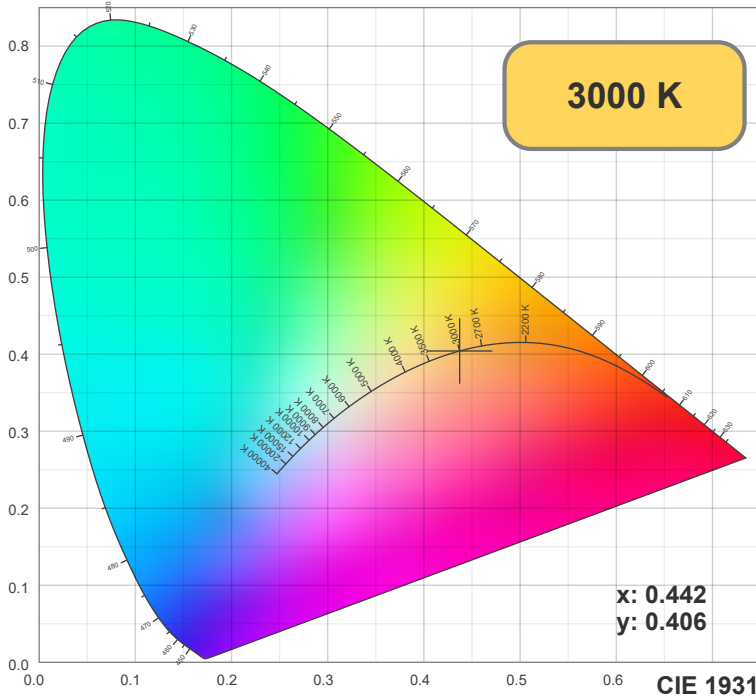
## Features

- High-quality 4.5 inches round recessed inground light fixture designed for outdoor applications.
- Operates on a 24V DC power supply with a total power consumption of 4W, making it energy-efficient and cost-effective.
- Powerful integrated LED bulb produces a warm white (3000K) light for ample illumination in your outdoor space.
- Sturdy die-cast aluminum body housing with a cap material of 316 stainless steel ensures durability and longevity.
- 1-way direction cover creates a unique ambiance and offers functional illumination for highlighting pathways, pool deck lights, patio lights, or low-level wall lightings.
- Rated IP67 for use in all weather conditions and is resilient to being stepped upon.
- Dimmable feature allows you to adjust the brightness to your desired level.

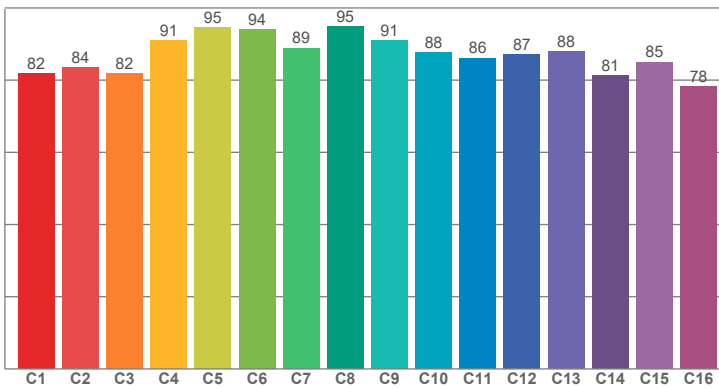


## Disclaimer

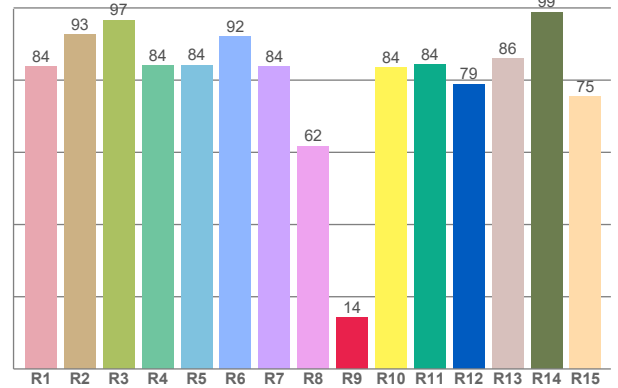
The data and information contained in this specification sheet are subject to change without notice; the ratings supplied are provided based on the product manufacturer. The information contained in this specification sheet should not be considered a warranty, expressed or implied, including, but not limited to, a warranty of merchantability or fitness for a particular purpose. In no event shall LED Lights and Parts be liable for any incidental or consequential damages resulting from the use, misuse, or inability to use the product. This exclusion applies regardless of whether such damages are sought based on breach of warranty, breach of contract, negligence, strict liability in tort, or any other legal theory.



**TM30: 87.1**



**CRI: 84.9 (R1-R8)**



**CRI R values, only R1-R8 are used to calculate final CRI value**

R1	R2	R3	R4	R5	R6	R7	R8	R9	R10	R11	R12	R13	R14	R15
83.72	92.74	96.64	83.97	84.20	92.14	83.68	61.74	14.16	83.53	84.39	78.94	86.02	98.86	75.37

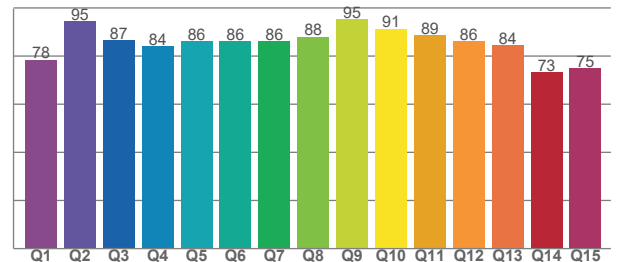
**TM30 C values, 16 binned values out of total of 99 C values**

C1	C2	C3	C4	C5	C6	C7	C8	C9	C10	C11	C12	C13	C14	C15	C16
81.75	83.53	81.72	91.07	94.70	94.05	88.89	94.76	91.07	87.54	86.11	87.16	87.93	81.36	85.01	78.19

**CQS Q values**

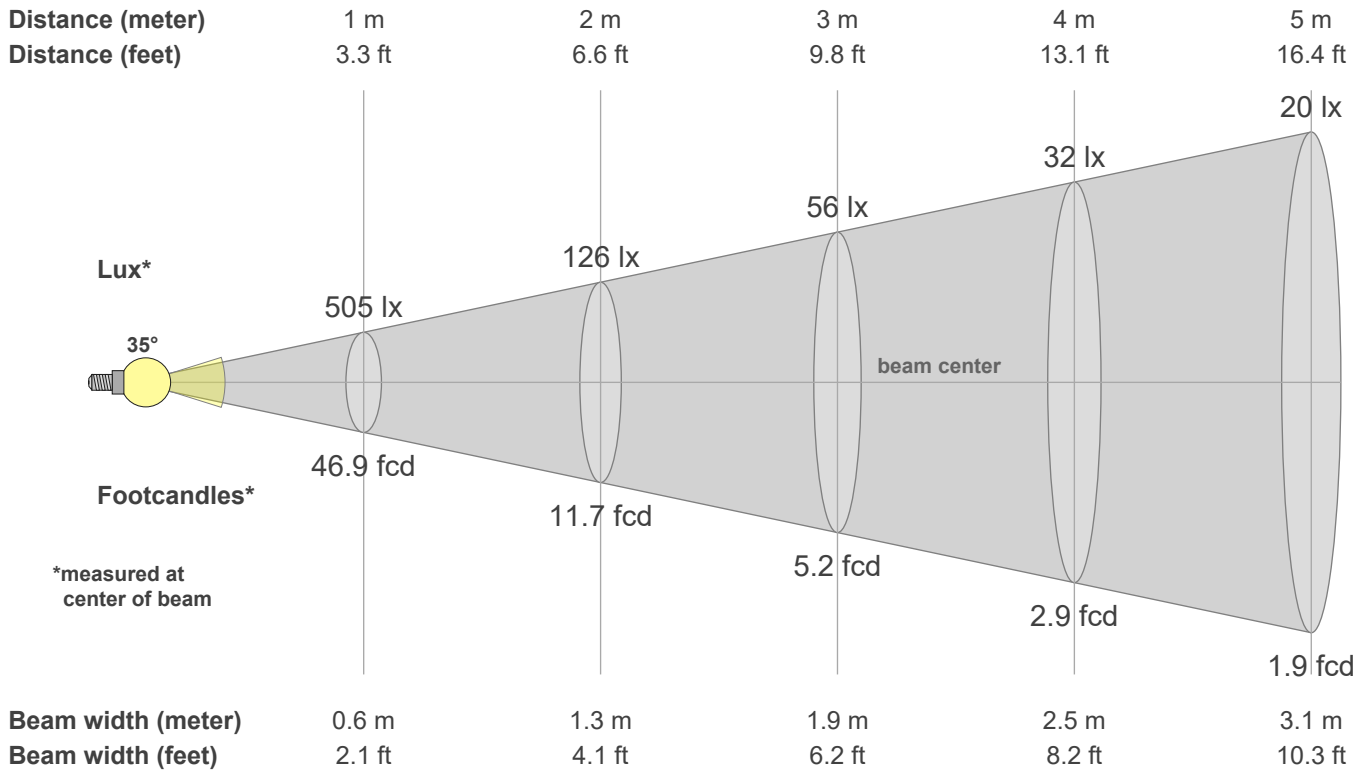
Q1	Q2	Q3	Q4	Q5	Q6	Q7	Q8	Q9	Q10	Q11	Q12	Q13	Q14	Q15
78.50	94.66	86.55	84.24	86.10	86.36	86.02	88.09	95.16	91.38	88.61	86.02	84.45	73.15	74.90

**CQS: 84.2**



## Color parameters

CCT	CRI	CRI R9	TM30 Rf	TM30 Rg	CQS	x	y	u	v	Duv
3000 K	84.9	14.2	87.1	96.3	84.2	0.4	0.4	0.3	0.3	0.0003



### Intensities in 0° c-plane

0°	2°	4°	6°	8°	10°	12°	14°	16°	18°	20°	22°	24°	26°	28°	30°	32°	34°	36°	38°
505	0	0	0	0	0	0	0	0	0	0	0	0	0	0	0	0	0	0	0
100%	0%	0%	0%	0%	0%	0%	0%	0%	0%	0%	0%	0%	0%	0%	0%	0%	0%	0%	0%

### Intensities in 90° c-plane

0°	2°	4°	6°	8°	10°	12°	14°	16°	18°	20°	22°	24°	26°	28°	30°	32°	34°	36°	38°
505	1005	993	971	936	877	779	636	480	361	282	232	200	177	161	149	139	131	124	117
100%	199%	197%	192%	185%	174%	154%	126%	95%	71%	56%	46%	40%	35%	32%	30%	28%	26%	24%	23%

### Intensities in 180° c-plane

0°	2°	4°	6°	8°	10°	12°	14°	16°	18°	20°	22°	24°	26°	28°	30°	32°	34°	36°	38°
505	0	0	0	0	0	0	0	0	1	1	1	1	1	1	1	1	1	2	2
100%	0%	0%	0%	0%	0%	0%	0%	0%	0%	0%	0%	0%	0%	0%	0%	0%	0%	0%	0%

### Intensities in 270° c-plane

0°	2°	4°	6°	8°	10°	12°	14°	16°	18°	20°	22°	24°	26°	28°	30°	32°	34°	36°	38°
505	1003	981	936	886	848	801	696	451	200	95	58	43	38	35	33	31	25	18	11
100%	199%	194%	185%	176%	168%	159%	138%	89%	40%	19%	11%	8%	7%	7%	7%	6%	5%	4%	2%

Beam angle 50%	Field angle 10%	Cutoff angle 2.5%	Intensity ratio in 120° cone	Intensity ratio in 90° cone
34.9°	66.6°	109.5°	83.0%	73.7%