



LED OUTDOOR DIMMABLE FLOOD LIGHT 120-277V, 30W, 5000K (DAYLIGHT)

Specifications



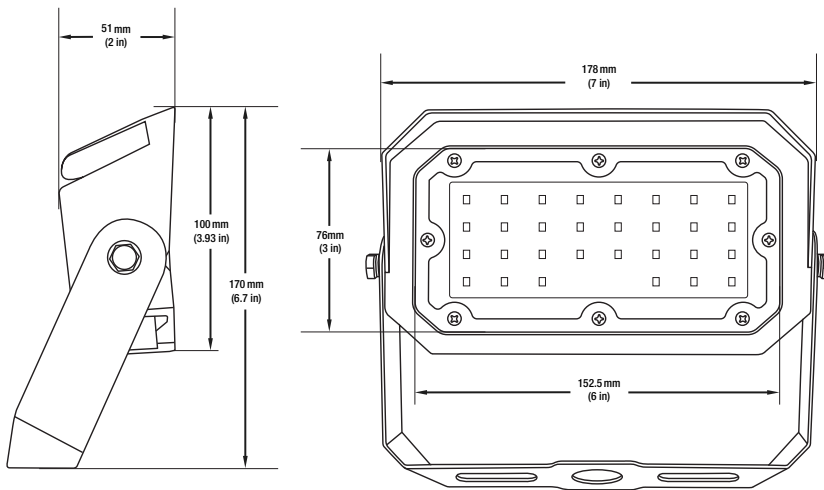
Model:	TS-FL0803-30W-80x110
Voltage:	120-277V
Input Current:	0.275A
Wattage:	30W
Color Temperature:	5000K (Daylight)
Frequency:	50-60Hz
Dimmable:	Yes
IP Rating:	IP65 [Waterproof]
Dimensions :	178mm x 100mm x 51mm (7" x 3.93" x 2")
Cable Size:	500mm (19.6") Ø 9.75mm (0.38") 5 x 18AWG
Certification:	UL



SKU#: 666561419820

Features

- **Versatile Voltage Range:** Compatible with 120-277V, making it suitable for both commercial and residential installations with various electrical systems.
- **Dimmable Functionality:** Easily adjust the light's intensity to create different ambiance levels according to specific preferences and needs.
- **Photocell Sensor:** The built-in sensor conserves energy by preventing the light from turning on during daylight hours or when sufficient natural light is available.
- **Weather and Dust Protection:** With an IP65 rating, it ensures reliable performance in challenging outdoor conditions, offering full protection against dust and moisture ingress.
- **Long Lifespan:** With a minimum 50,000-hour lifespan, it reduces the need for frequent bulb replacements, making it cost-effective and long-lasting.
- **Anti-Glare Design:** The unique tempered glass optical design softens the light and minimizes glare, providing a comfortable and pleasant lighting experience.



Disclaimer

The data and information contained in this specification sheet are subject to change without notice; the ratings supplied are provided based on the product manufacturer. The information contained in this specification sheet should not be considered a warranty, expressed or implied, including, but not limited to, a warranty of merchantability or fitness for a particular purpose. In no event shall LED Lights and Parts be liable for any incidental or consequential damages resulting from the use, misuse, or inability to use the product. This exclusion applies regardless of whether such damages are sought based on breach of warranty, breach of contract, negligence, strict liability in tort, or any other legal theory.



Light efficiency:

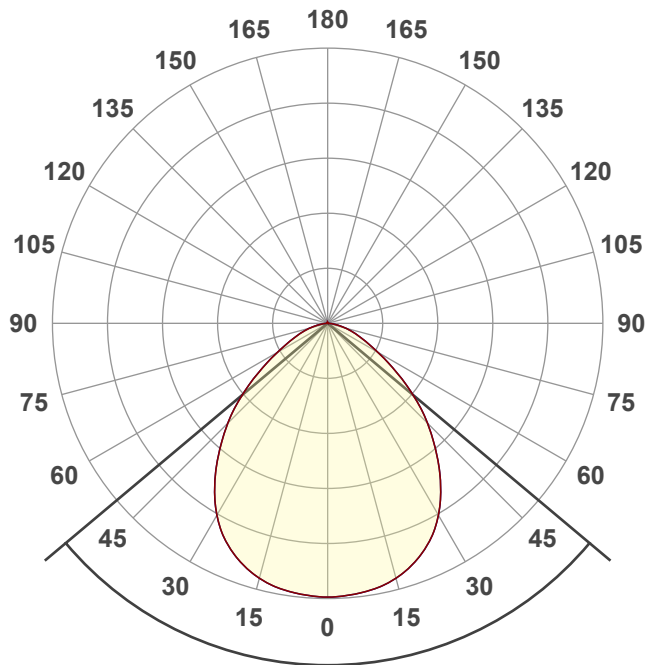
74 Lumen/Watt

Light quality:

CRI: 73.3

Color temperature:

5000 K



Beam angle

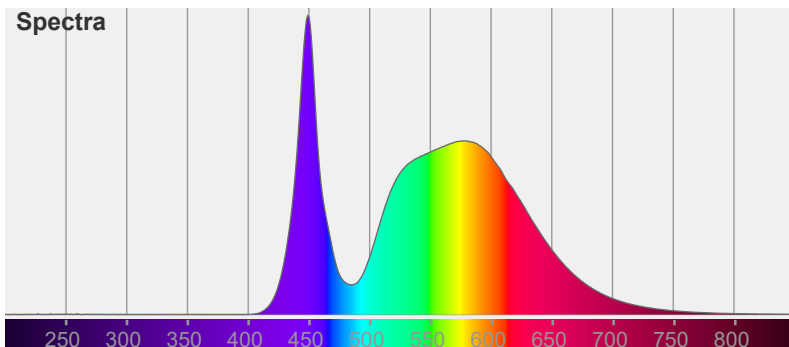
100°

Color



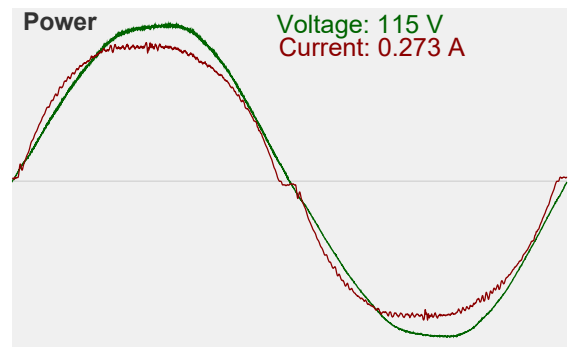
CIE1931
x: 0.347
y: 0.354

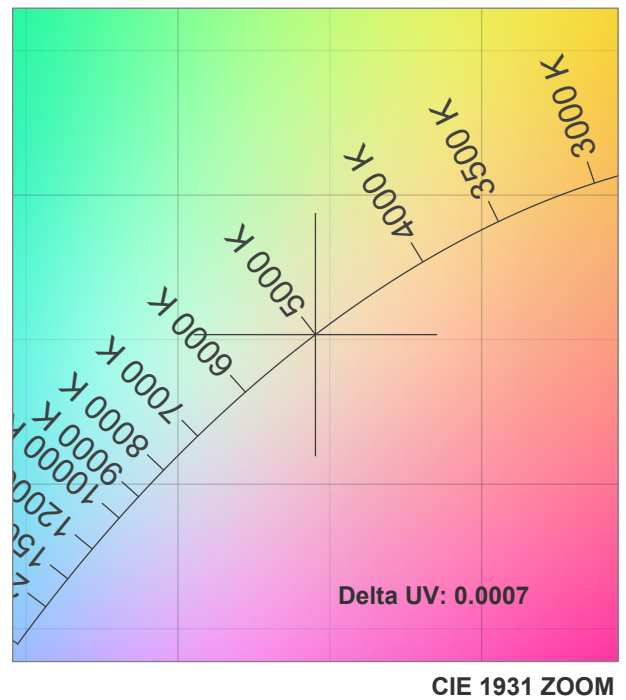
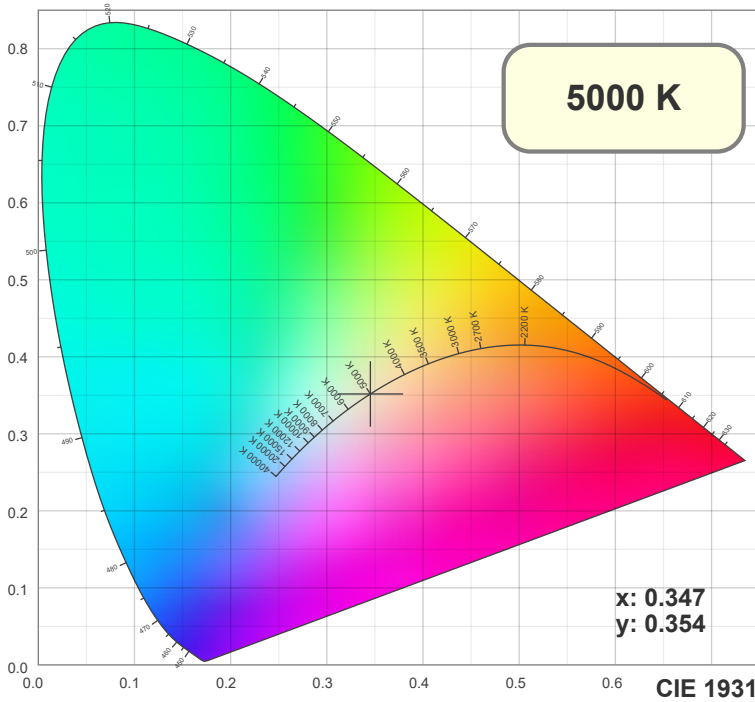
Spectra



Power

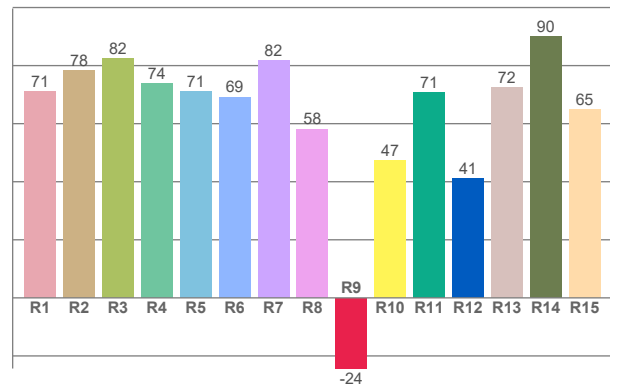
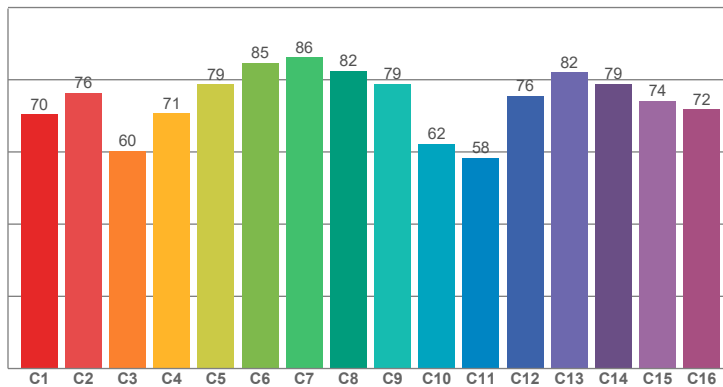
Voltage: 115 V
Current: 0.273 A





TM30: 73.6

CRI: 73.3 (R1-R8)



CRI R values, only R1-R8 are used to calculate final CRI value

R1	R2	R3	R4	R5	R6	R7	R8	R9	R10	R11	R12	R13	R14	R15
71.21	78.24	82.36	73.95	71.14	69.20	81.89	58.21	-24.34	47.20	70.66	41.04	72.34	89.97	64.89

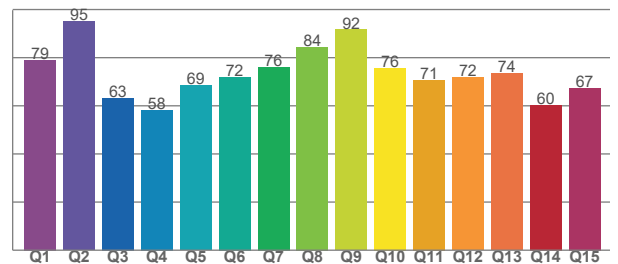
TM30 C values, 16 binned values out of total of 99 C values

C1	C2	C3	C4	C5	C6	C7	C8	C9	C10	C11	C12	C13	C14	C15	C16
70.48	76.34	60.28	70.65	78.80	84.74	86.16	82.44	78.89	62.28	58.43	75.62	82.11	78.90	74.13	71.78

CQS Q values

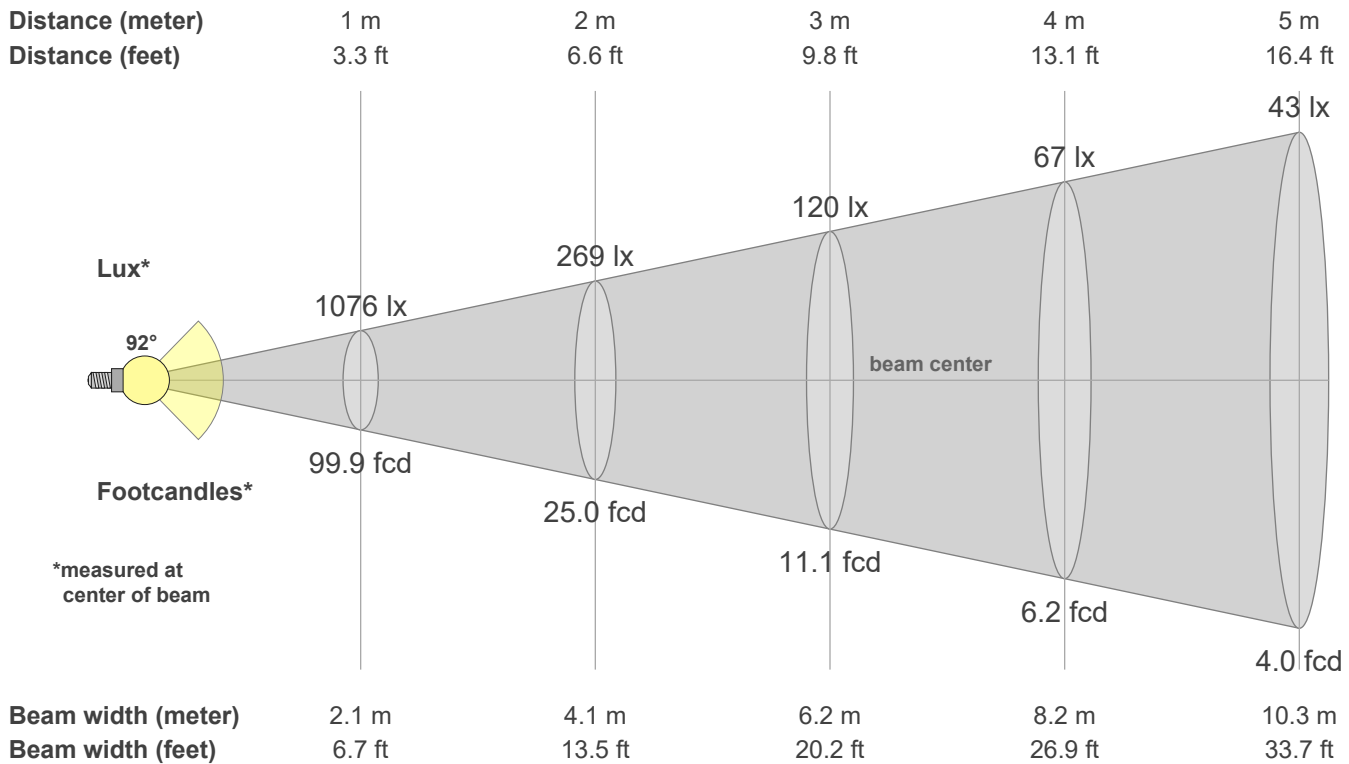
Q1	Q2	Q3	Q4	Q5	Q6	Q7	Q8	Q9	Q10	Q11	Q12	Q13	Q14	Q15
78.98	95.02	63.22	58.18	68.50	72.03	76.11	84.45	91.59	75.63	70.75	71.67	73.53	60.33	67.46

CQS: 71.9



Color parameters

CCT	CRI	CRI R9	TM30 Rf	TM30 Rg	CQS	x	y	u	v	Duv
5000 K	73.3	-24.3	73.6	95.5	71.9	0.3	0.4	0.2	0.3	0.0004



Intensities in 0° c-plane

0°	5°	10°	15°	20°	25°	30°	35°	40°	45°	50°	55°	60°	65°	70°	75°	80°	85°	90°	95°
1076	1071	1059	1036	998	944	869	773	665	554	439	326	231	162	113	73	40	16	5	2
100%	100%	98%	96%	93%	88%	81%	72%	62%	52%	41%	30%	22%	15%	11%	7%	4%	1%	0%	0%

Intensities in 90° c-plane

0°	5°	10°	15°	20°	25°	30°	35°	40°	45°	50°	55°	60°	65°	70°	75°	80°	85°	90°	95°
1076	1071	1059	1036	998	944	869	773	665	554	439	326	231	162	113	73	40	16	5	2
100%	100%	98%	96%	93%	88%	81%	72%	62%	52%	41%	30%	22%	15%	11%	7%	4%	1%	0%	0%

Intensities in 180° c-plane

0°	5°	10°	15°	20°	25°	30°	35°	40°	45°	50°	55°	60°	65°	70°	75°	80°	85°	90°	95°
1076	1071	1059	1036	998	944	869	773	665	554	439	326	231	162	113	73	40	16	5	2
100%	100%	98%	96%	93%	88%	81%	72%	62%	52%	41%	30%	22%	15%	11%	7%	4%	1%	0%	0%

Intensities in 270° c-plane

0°	5°	10°	15°	20°	25°	30°	35°	40°	45°	50°	55°	60°	65°	70°	75°	80°	85°	90°	95°
1076	1071	1059	1036	998	944	869	773	665	554	439	326	231	162	113	73	40	16	5	2
100%	100%	98%	96%	93%	88%	81%	72%	62%	52%	41%	30%	22%	15%	11%	7%	4%	1%	0%	0%

Beam angle 50%	Field angle 10%	Cutoff angle 2.5%	Intensity ratio in 120° cone	Intensity ratio in 90° cone
91.5°	141.3°	164.1°	88.3%	66.8%