



LED-S9W-5CCTKWH-SQ

4" SQUARE FLAT PANEL LIGHT WITH FT6 RATED WIRE, 120V 9W 5CCT(2.7K, 3K, 3.5K, 4K, 5K)

Specifications



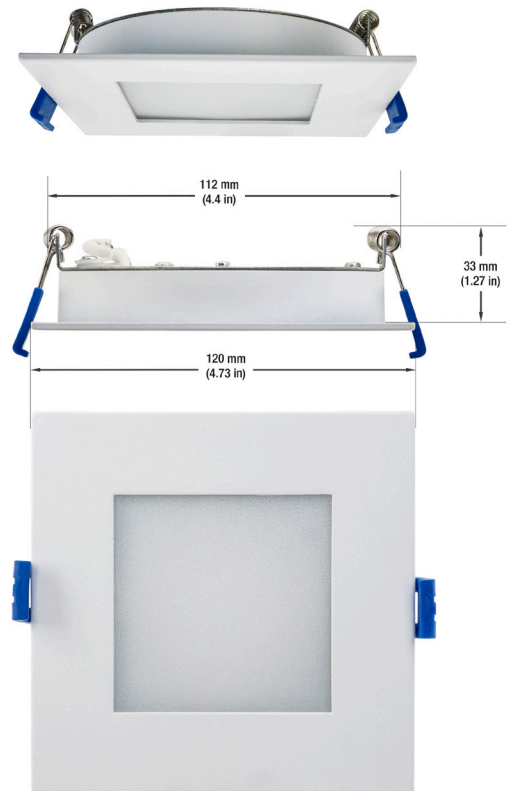
Model No.:	LED-S9W-5CCTKWH-SQ
Input Voltage:	120V AC
Wattage:	9W
Color Temperatures:	Selectable 5CCT 2700K (Soft White), 3000K (Warm White), 3500K (Mid-Warm White), 4000K (Natural White), 5000K (Daylight)
Beam Angel:	110°
Available Trim Colors:	Black, Brush Nickel, Black Nickel (Sold Separately)
Brightness:	550 Lumens
Dimmable:	Yes
Rendering Index:	CRI>90
IP Rated:	IP20 (Suitable for damp locations)
Wire Length:	30 cm (11.8 in) 22AWG
Dimensions:	Overall Length: 120 mm (4.73 in) Depth: 33 mm (1.27 in)
Cut Size:	112 x 112 mm (4.4 x 4.4 in)
J-Box Dimensions:	Length: 87 mm (3.425 in) Width: 87 mm (3.425 in) Depth: 33 mm (1.3 in)
Certifications:	FCC/ETL



SKU: 666561418014

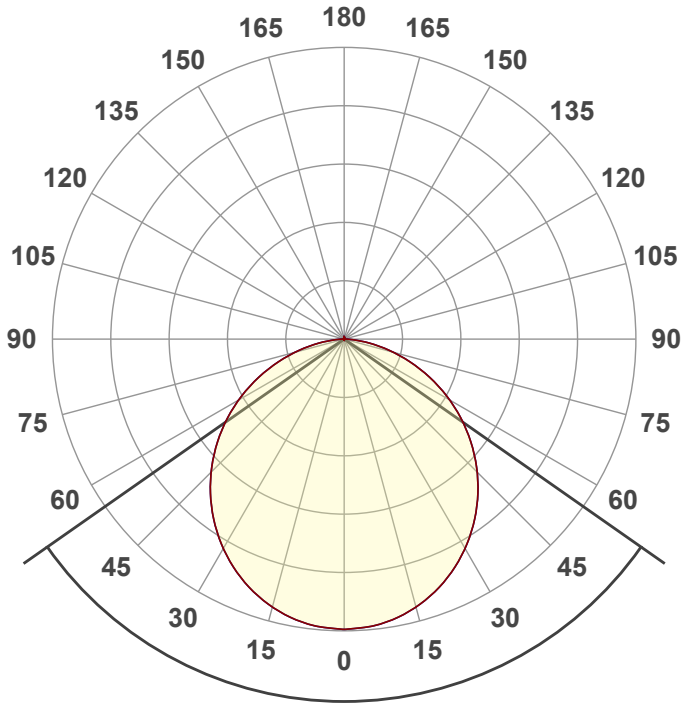
Features

- Ultraslim and low profile panel with a flush mount/ recessed light.
- Has a high-quality reflector that acts as a good anti-glare.
- It also comes in Black, Brush Nickel, and Black Nickel trim other than white color.
- The push springs help in the easy installation of lights.
- The color temperature can be adjusted from the cable wire that connects with the LED Driver Box.
- It also comes in Black, Black Nickel, and Brushed Nickel trim other than white color.
- The LEDs are integrated at the sides within the fixture which provides even light distribution without flicker.
- Has a lifespan of 50,000 hours.
- They also come in 6 inches.
- We also carry in round shapes in both 4-inch and 6-inch.
- Dissipates very less heat and is safe to touch.
- Suitable for dry and Damp Locations.



Disclaimer

The data and information contained in this specification sheet are subject to change without notice; the ratings supplied are provided based on the product manufacturer. The information contained in this specification sheet should not be considered a warranty, expressed or implied, including, but not limited to, a warranty of merchantability or fitness for a particular purpose. In no event shall LED Lights and Parts be liable for any incidental or consequential damages resulting from the use, misuse, or inability to use the product. This exclusion applies regardless of whether such damages are sought based on breach of warranty, breach of contract, negligence, strict liability in tort, or any other legal theory.



Beam angle

110°

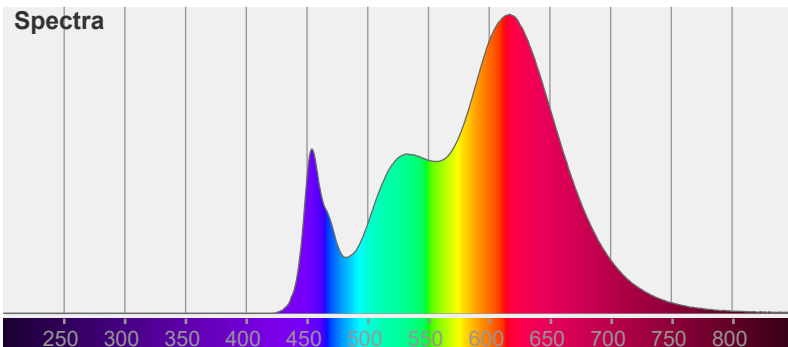


Color



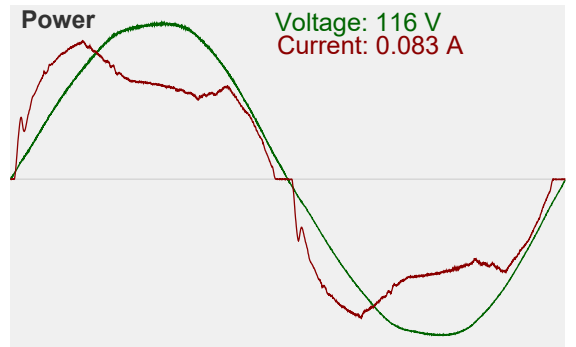
CIE1931
x: 0.442
y: 0.398

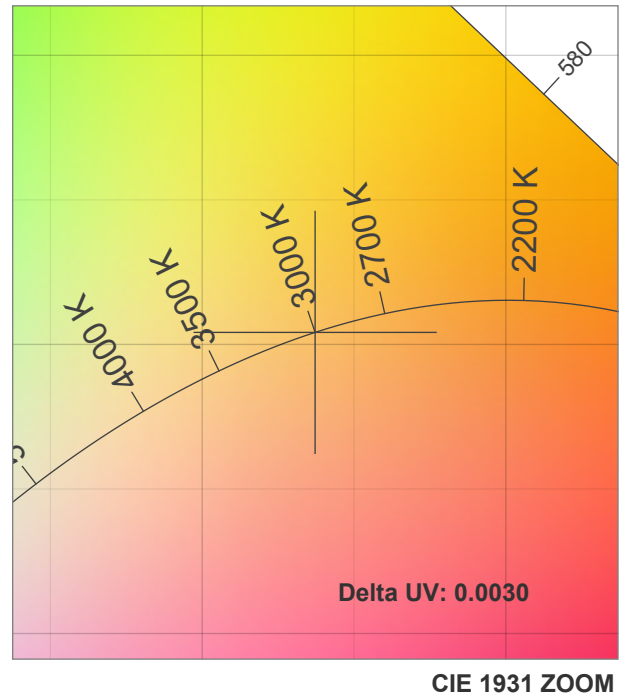
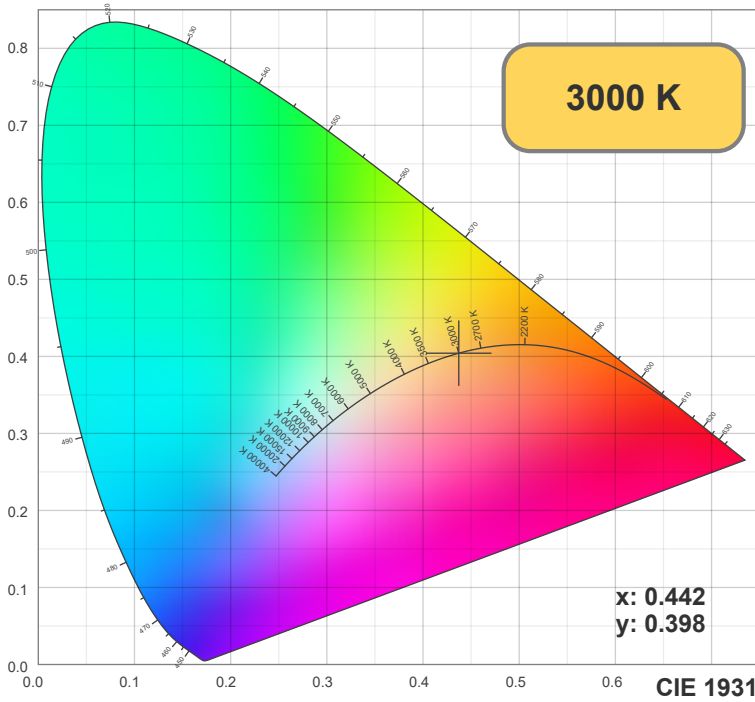
Spectra



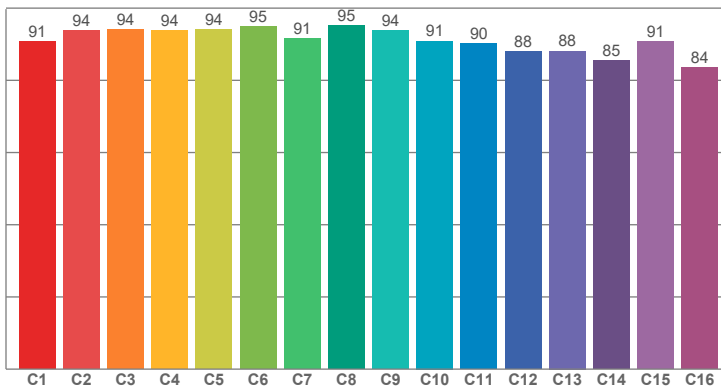
Power

Voltage: 116 V
Current: 0.083 A

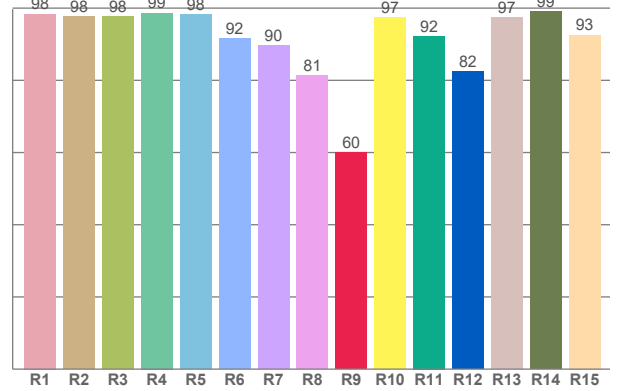




TM30: 91.5



CRI: 94.1 (R1-R8)



CRI R values, only R1-R8 are used to calculate final CRI value

R1	R2	R3	R4	R5	R6	R7	R8	R9	R10	R11	R12	R13	R14	R15
98.37	97.72	97.64	98.65	98.27	91.53	89.59	81.39	59.93	97.42	92.25	82.39	97.48	99.00	92.59

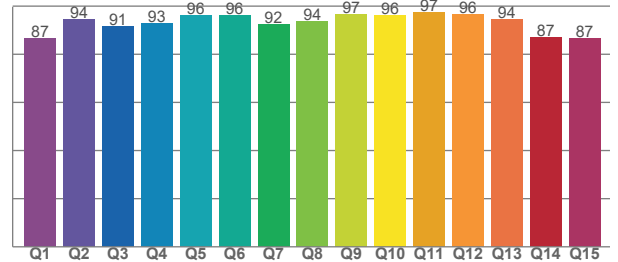
TM30 C values, 16 binned values out of total of 99 C values

C1	C2	C3	C4	C5	C6	C7	C8	C9	C10	C11	C12	C13	C14	C15	C16
90.82	93.88	94.15	93.76	94.08	94.81	91.49	95.26	93.78	90.92	90.23	88.00	88.11	85.48	90.67	83.58

CQS Q values

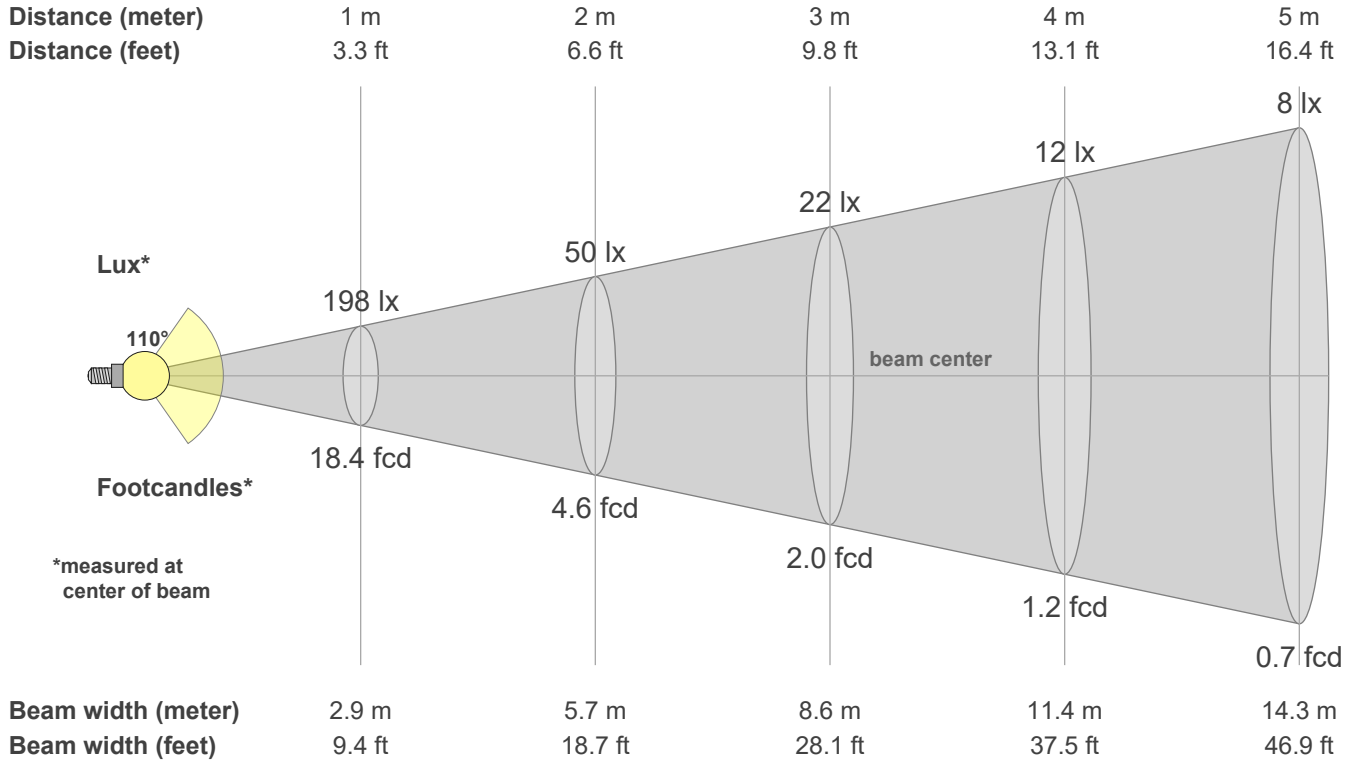
Q1	Q2	Q3	Q4	Q5	Q6	Q7	Q8	Q9	Q10	Q11	Q12	Q13	Q14	Q15
86.58	94.35	91.50	93.01	96.07	96.09	92.31	93.55	96.74	96.25	97.48	96.46	94.37	86.97	86.77

CQS: 92.0



Color parameters

CCT	CRI	CRI R9	TM30 Rf	TM30 Rg	CQS	x	y	u	v	Duv
3000 K	94.1	59.9	91.5	100.2	92.0	0.4	0.4	0.3	0.3	-0.0030



Intensities in 0° c-plane

0°	5°	10°	15°	20°	25°	30°	35°	40°	45°	50°	55°	60°	65°	70°	75°	80°	85°	90°	95°
198	197	194	189	183	175	165	154	142	128	114	99	83	67	51	35	20	8	1	0
100%	100%	98%	96%	92%	88%	83%	78%	72%	65%	58%	50%	42%	34%	26%	18%	10%	4%	1%	0%

Intensities in 90° c-plane

0°	5°	10°	15°	20°	25°	30°	35°	40°	45°	50°	55°	60°	65°	70°	75°	80°	85°	90°	95°
198	197	194	189	183	175	165	154	142	128	114	99	83	67	51	35	20	8	1	0
100%	100%	98%	96%	92%	88%	83%	78%	72%	65%	58%	50%	42%	34%	26%	18%	10%	4%	1%	0%

Intensities in 180° c-plane

0°	5°	10°	15°	20°	25°	30°	35°	40°	45°	50°	55°	60°	65°	70°	75°	80°	85°	90°	95°
198	197	194	189	183	175	165	154	142	128	114	99	83	67	51	35	20	8	1	0
100%	100%	98%	96%	92%	88%	83%	78%	72%	65%	58%	50%	42%	34%	26%	18%	10%	4%	1%	0%

Intensities in 270° c-plane

0°	5°	10°	15°	20°	25°	30°	35°	40°	45°	50°	55°	60°	65°	70°	75°	80°	85°	90°	95°
198	197	194	189	183	175	165	154	142	128	114	99	83	67	51	35	20	8	1	0
100%	100%	98%	96%	92%	88%	83%	78%	72%	65%	58%	50%	42%	34%	26%	18%	10%	4%	1%	0%

Beam angle 50%	Field angle 10%	Cutoff angle 2.5%	Intensity ratio in 120° cone	Intensity ratio in 90° cone
110.0°	160.4°	173.6°	79.4%	54.4%