



4" FLAT ROUND DIMMABLE RECESSED DOWNLIGHT

120V, 9W, 5CCT (2.7K • 3K • 3.5K • 4K • 5K)

Specifications



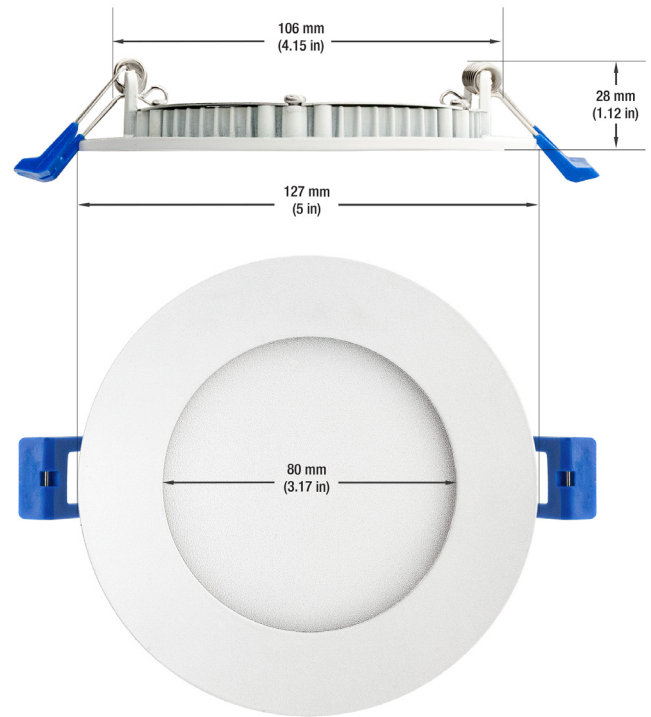
Model No.:	LED-S9W-5CCTKWH
Input Voltage:	120V AC
Wattage:	9W
Color Temperature:	3CCT Selectable: 3000K (Warm White), 4000K (Natural White), 5000K (Daylight)
Brightness:	550Lm
Available Trim Color:	Brushed Nickel, Black Nickel, Black (<i>Sold Separately</i>)
Beam Angle:	110°
Rendering Index:	CRI>90
Material:	Aluminum
Dimmable:	Yes
Dimensions (Panel):	Outer Diameter: 126.7mm (4.98") Overall Depth: 25mm (0.98") Cut Size: 107mm (4.2")
Dimensions (Driver Box):	Length: 87mm (3.4") Width: 87mm (3.4") Depth: 33mm (1.29")
Wire Size:	400mm (15.7") 22AWG
Certification:	ETL



SKU: 666561417932

Features

- The LED-S9W-5CCTKWH is a 4-inch flat round dimmable recessed LED panel light suitable for residential and commercial use.
- It operates on 120V AC and consumes 9W, providing a brightness of 550Lm.
- The color temperature is adjustable with 5CCT options ranging from 2700K to 5000K, and it has a wide beam angle of 120° and a CRI>90.
- The panel light has a low profile design and can be flush-mounted, with push springs for easy installation and a cable wire for color temperature adjustments.
- It comes in a standard white color and has Brushed Nickel, Black Nickel and Black trim options (*sold separately*).
- The LEDs are integrated on the sides for even light distribution without flicker.
- It has a lifespan of 50,000 hours and dissipates very little heat, making it safe to touch. It is suitable for both dry and damp locations.



Brushed Nickel SKU: 666561417994 **Black Nickel** SKU: 666561418007 **Black** SKU: 666561417987



Disclaimer

The data and information contained in this specification sheet are subject to change without notice; the ratings supplied are provided based on the product manufacturer. The information contained in this specification sheet should not be considered a warranty, expressed or implied, including, but not limited to, a warranty of merchantability or fitness for a particular purpose. In no event shall LED Lights and Parts be liable for any incidental or consequential damages resulting from the use, misuse, or inability to use the product. This exclusion applies regardless of whether such damages are sought based on breach of warranty, breach of contract, negligence, strict liability in tort, or any other legal theory.



Light efficiency:



Light quality:



Color temperature:



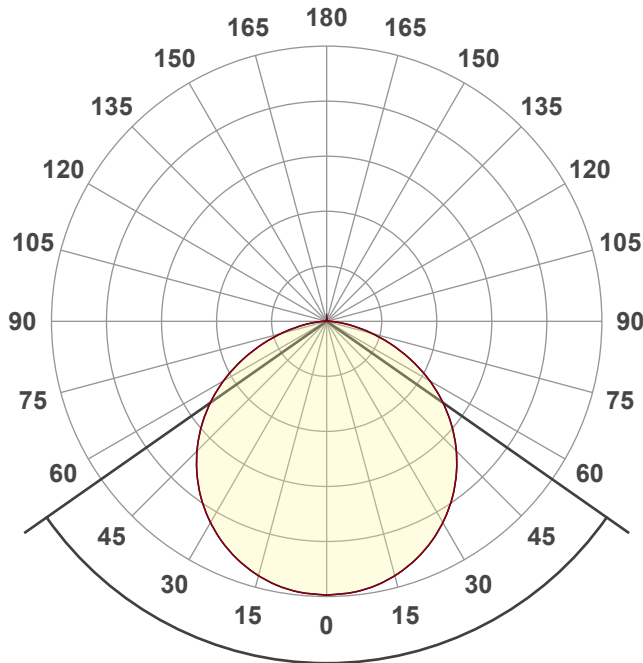
Output: 550 lm

Peak: 193 cd

Power: 9.1 W

PF: 0.94

2 PLANES



Beam angle

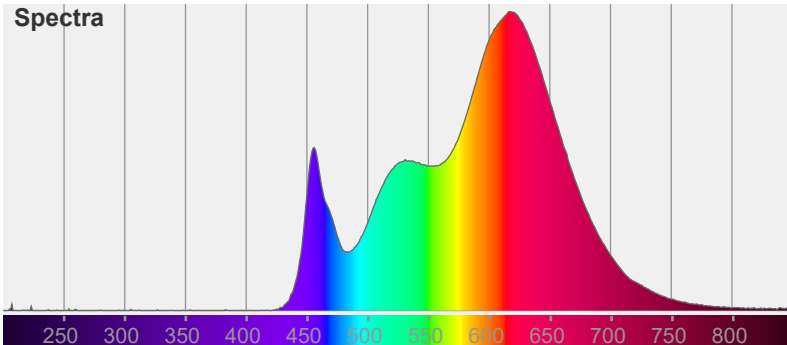
110°

Color



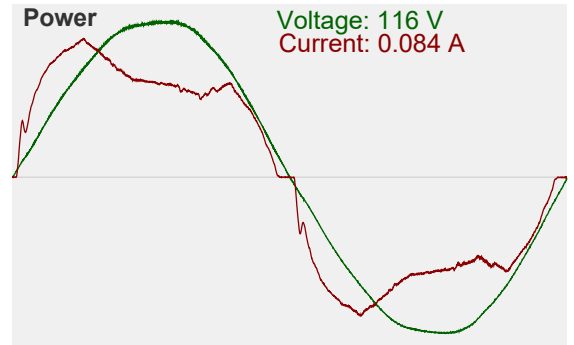
CIE1931
x: 0.445
y: 0.395

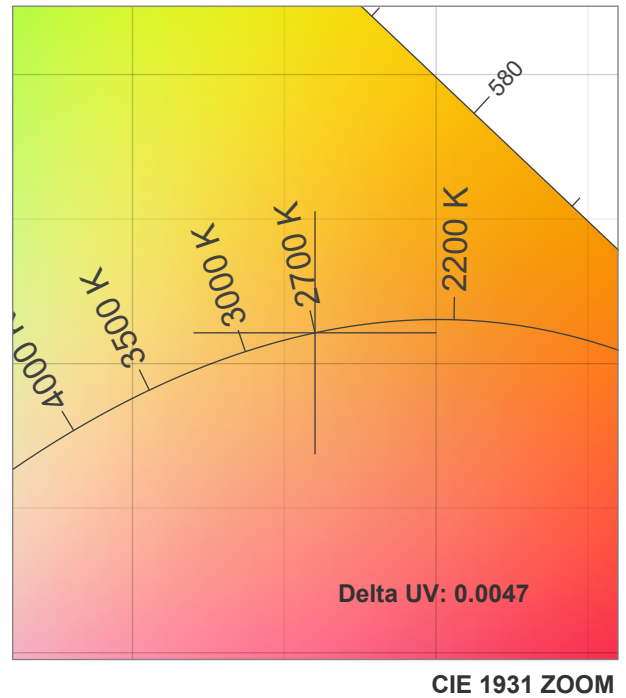
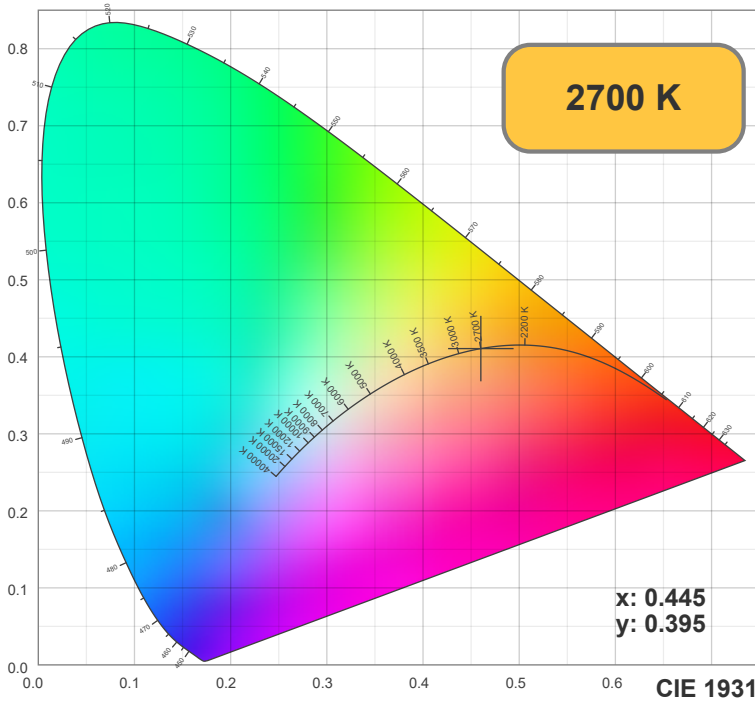
Spectra



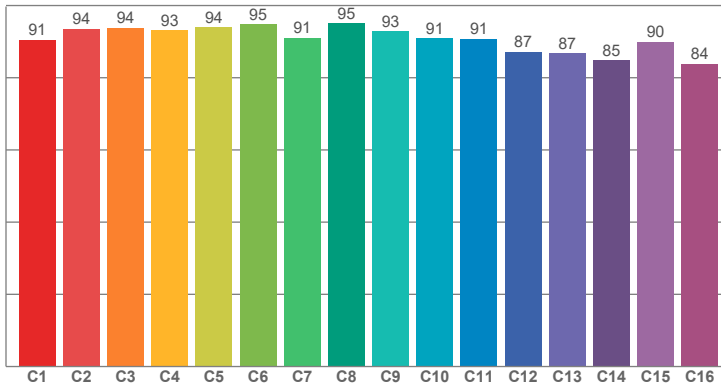
Power

Voltage: 116 V
Current: 0.084 A

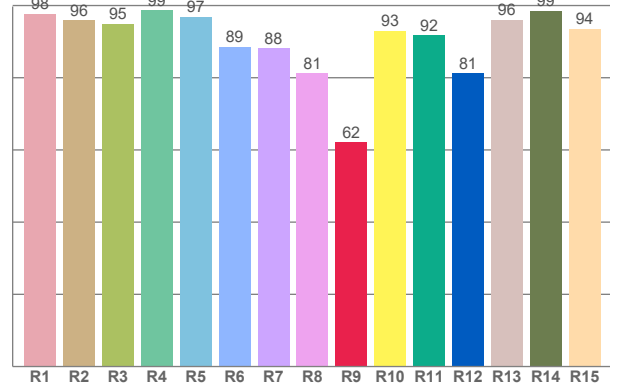




TM30: 91.1



CRI: 92.7 (R1-R8)



CRI R values, only R1-R8 are used to calculate final CRI value

R1	R2	R3	R4	R5	R6	R7	R8	R9	R10	R11	R12	R13	R14	R15
97.67	95.92	95.01	98.63	96.88	88.53	88.11	81.20	62.14	93.05	91.76	81.17	96.10	98.52	93.63

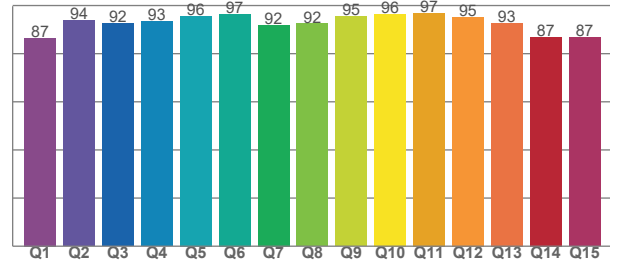
TM30 C values, 16 binned values out of total of 99 C values

C1	C2	C3	C4	C5	C6	C7	C8	C9	C10	C11	C12	C13	C14	C15	C16
90.50	93.51	93.82	93.18	93.97	94.78	91.08	95.03	92.88	90.90	90.84	87.19	86.82	84.89	89.97	83.82

CQS Q values

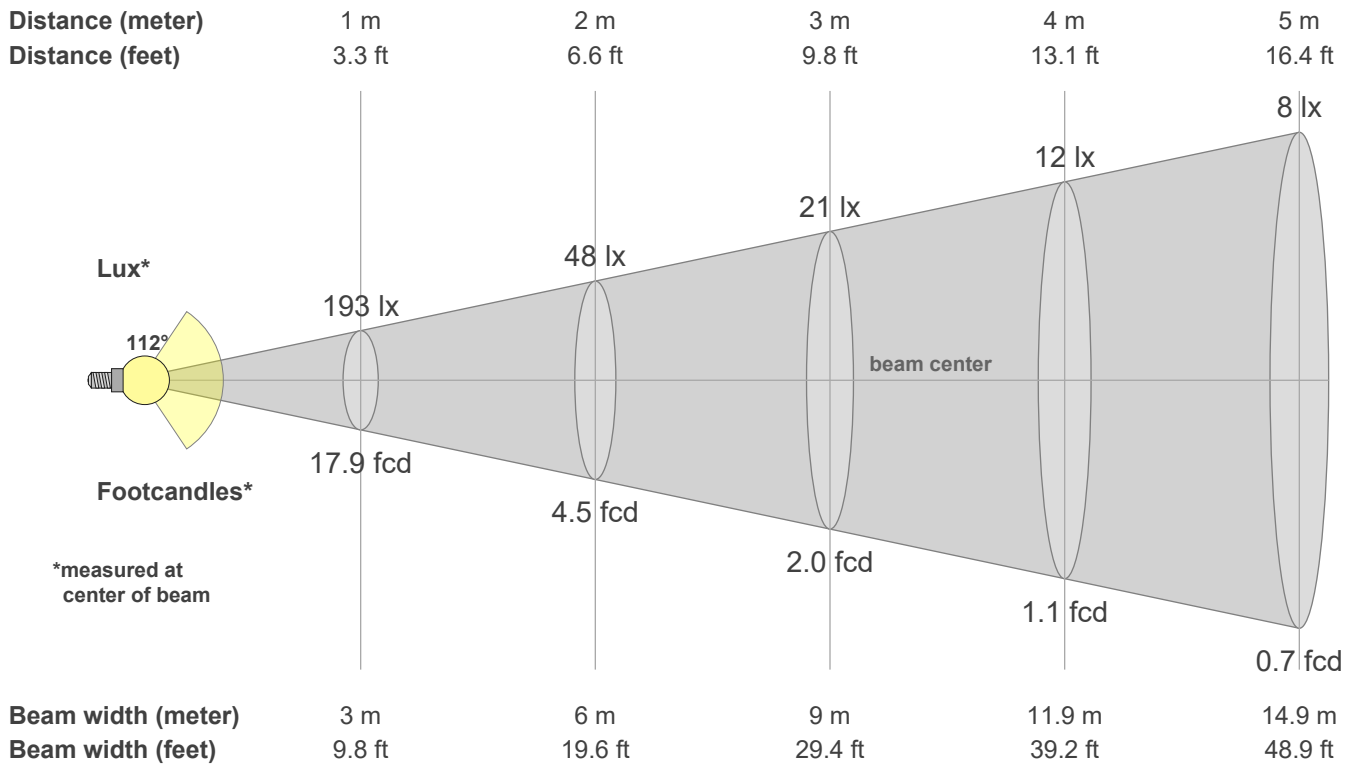
Q1	Q2	Q3	Q4	Q5	Q6	Q7	Q8	Q9	Q10	Q11	Q12	Q13	Q14	Q15
86.57	93.71	92.45	93.40	95.60	96.56	91.96	92.42	95.39	96.50	96.97	95.16	92.81	86.97	86.82

CQS: 91.8



Color parameters

CCT	CRI	CRI R9	TM30 Rf	TM30 Rg	CQS	x	y	u	v	Duv
2700 K	92.7	62.1	91.1	100.3	91.8	0.5	0.4	0.3	0.4	-0.0047



Intensities in 0° c-plane

0°	5°	10°	15°	20°	25°	30°	35°	40°	45°	50°	55°	60°	65°	70°	75°	80°	85°	90°	95°
193	192	190	186	180	173	164	154	142	129	115	100	84	67	50	33	19	8	2	0
100%	100%	98%	96%	93%	89%	85%	80%	74%	67%	60%	52%	44%	35%	26%	17%	10%	4%	1%	0%

Intensities in 90° c-plane

0°	5°	10°	15°	20°	25°	30°	35°	40°	45°	50°	55°	60°	65°	70°	75°	80°	85°	90°	95°
193	192	190	186	180	173	164	154	142	129	115	100	84	67	50	33	19	8	2	0
100%	100%	98%	96%	93%	89%	85%	80%	74%	67%	60%	52%	44%	35%	26%	17%	10%	4%	1%	0%

Intensities in 180° c-plane

0°	5°	10°	15°	20°	25°	30°	35°	40°	45°	50°	55°	60°	65°	70°	75°	80°	85°	90°	95°
193	192	190	186	180	173	164	154	142	129	115	100	84	67	50	33	19	8	2	0
100%	100%	98%	96%	93%	89%	85%	80%	74%	67%	60%	52%	44%	35%	26%	17%	10%	4%	1%	0%

Intensities in 270° c-plane

0°	5°	10°	15°	20°	25°	30°	35°	40°	45°	50°	55°	60°	65°	70°	75°	80°	85°	90°	95°
193	192	190	186	180	173	164	154	142	129	115	100	84	67	50	33	19	8	2	0
100%	100%	98%	96%	93%	89%	85%	80%	74%	67%	60%	52%	44%	35%	26%	17%	10%	4%	1%	0%

Beam angle 50%	Field angle 10%	Cutoff angle 2.5%	Intensity ratio in 120° cone	Intensity ratio in 90° cone
112.3°	159.9°	175.1°	79.1%	53.9%